



INSTALLATION

PIONEER INDUSTRIES, INC.
3325 S. Garfield Ave.
Commerce, CA 90040
(800) 338-9468
www.pioneerind.com

Tools:



Adjustable Wrench



Plumbers Putty



Teflon Tape



Rags

Model Number: 2DM300, 2DM301, 2AM500, 2AM501

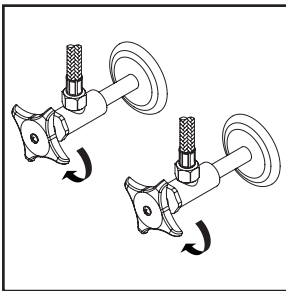


Warnings and Notes:

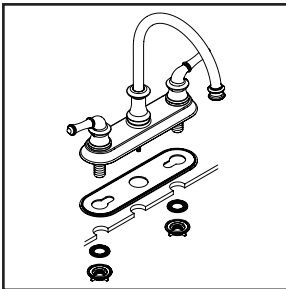
Check with local plumbing code requirements before installation.
This product should be installed by a local listed plumber.
Do not use plumbers putty on threads.

Installation Steps:

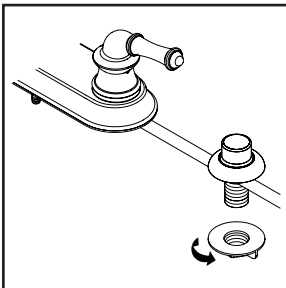
Two Handle Kitchen Faucet



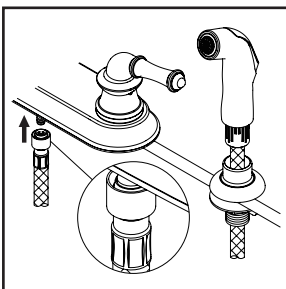
(1) Shut off the water supply. Remove old faucet. Clean mounting surface in preparation for new faucet.



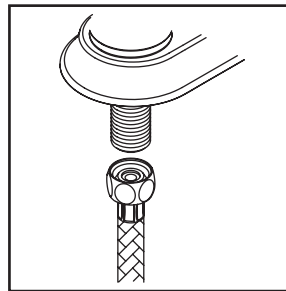
(2) Apply adequate plumbers putty along the boundary of base gasket. Align faucet with mounting holes and place faucet on the sink. Slide washers on shanks and place the locknuts to the shanks from underneath the sink. Go to step (5) if faucet is without side spray.



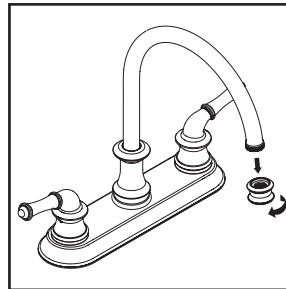
(3) For faucet with side spray, place side spray holder on mounting hole. Tighten locknut from underneath the sink to secure side spray holder.



(4) Guide the side spray hose through the side spray holder. Insert the side spray hose quick connect adapter into faucet outlet end, push until a "click" is heard. Pull side spray hose downward to test engagement.



(5) When using stainless steel braided faucet supply hose; this faucet requires one end of the supply hose to have a 1/2" female IPS connection. The other end of this supply hose must match the thread on the water supply valve under your sink. Once you've identified the required size, carefully follow the manufacturer's installation instructions for each hose.

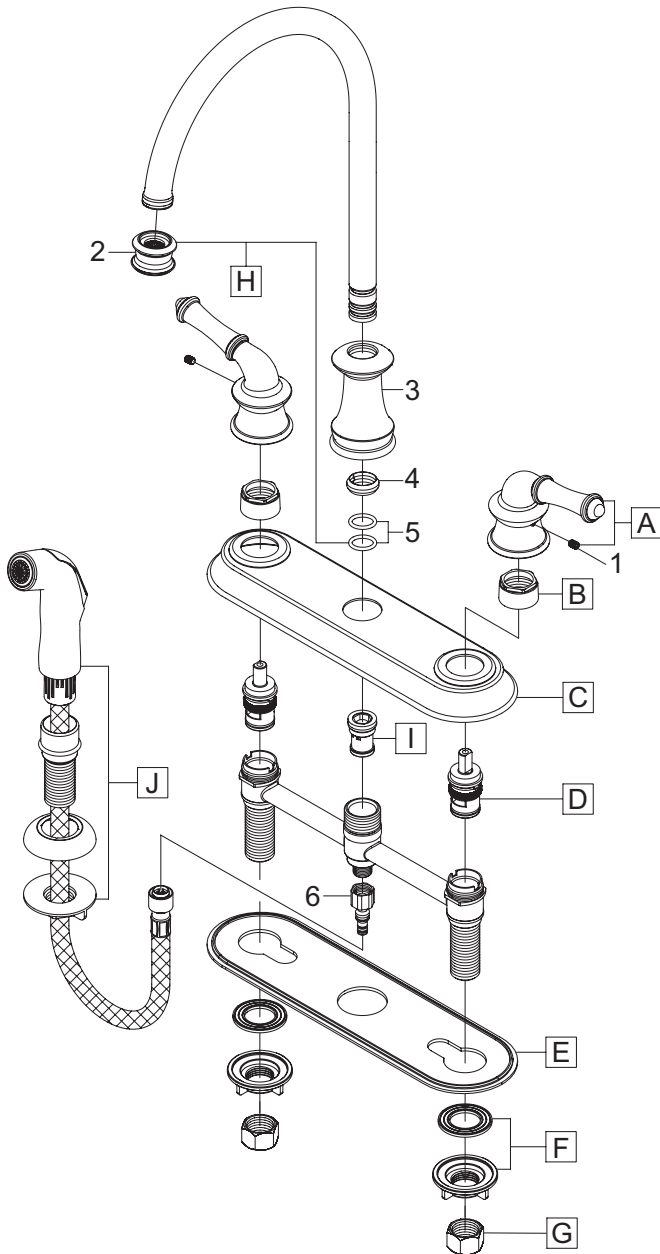


(6) Important: After installation is complete, remove the aerator. Turn on the water and allow both hot and cold water to run for at least one minute each. While water is running, check for leaks. Turn off the water and replace the aerator when finished.

Exploded Drawing : (For 2DM300, 2DM301)

* Note: Please specify finish/color when ordering.

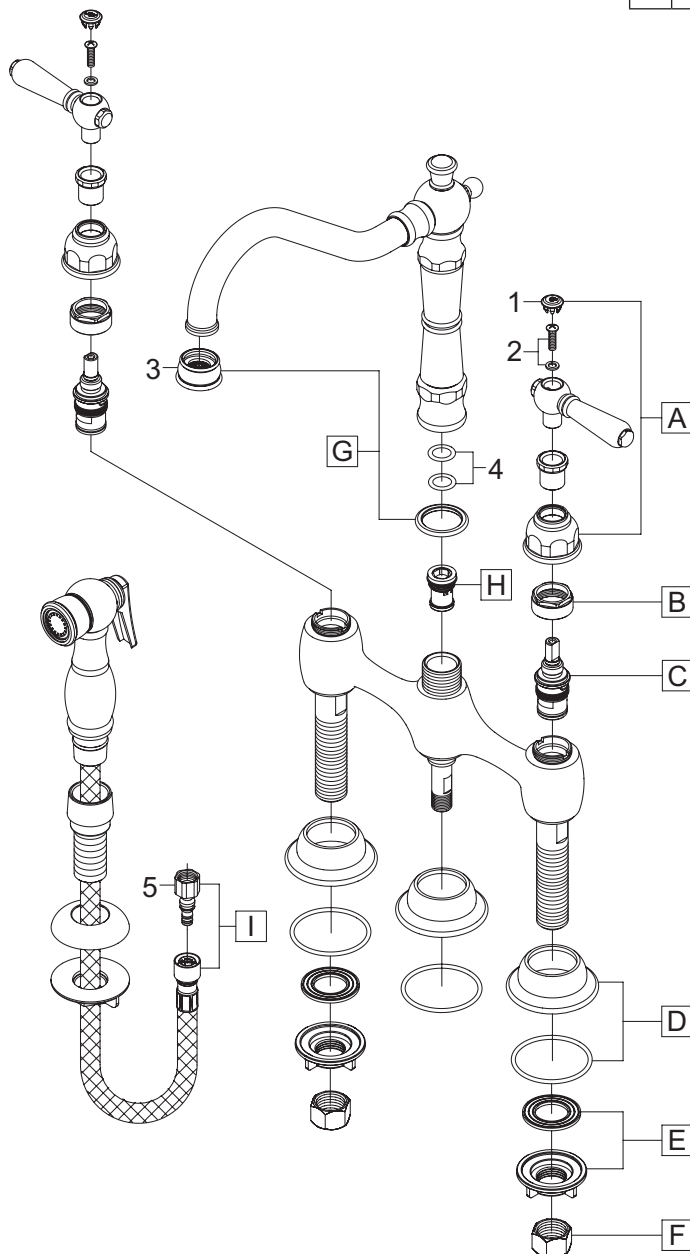
	ITEM #	DESCRIPTION
A	X-1200006*	Lever Handle
B	X-4900007	Bonnet Nut
C	X-4200021*	Deck Plate
D	X-3900002C, H	Ceramic Stem-Cold, Hot
E	X-4200022	Base Plate
F	X-4900008	Mounting Kit
G	X-4900004	Supply Nuts
H	X-2200004*	DM High Gooseneck Spout
I	X-4200016	Diverter Piston (For 2DM301)
J	OP-420077*	Side Spray Assembly (For 2DM301)
1	X-4900002	3/32" Allen Screw
2	X-4200114*	1.5 GPM Aerator
3	X-4200020*	Spout Bonnet Nut
4	X-4900013	Spout Snap Ring
5	X-4900012	Spout O-rings
6	OP-420083	Quick Connect Adapter



Exploded Drawing : (For 2AM500, 2AM501)

* Note: Please specify finish/color when ordering.

	ITEM #	DESCRIPTION
A	X-1200026C, H*	Lever Handle-Cold, Hot
B	X-4900130	Bonnet Nut
C	X-3900004C, H	Ceramic Stem-Cold, Hot
D	X-4200063*	Escutcheon and Gasket
E	X-4900008	Mounting Kit
F	X-4900004	Supply Nuts
G	X-2200013*	Americana Spout
H	X-4200016	Diverter Piston (For 2AM501)
I	X-4200202*	Side Spray Assembly (For 2AM501)
1	X-4900042C, H*	Handle Button-Cold, Hot
2	X-4900043	Handle Screw
3	X-4900091*	1.5 GPM Aerator
4	X-4900012	Spout O-Rings
5	OP-420083	Quick Connect Adapter



For more care information or trouble shooting inquiries about your Pioneer product, please call:
Pioneer Industries, Inc. (800) 338-9468
 Monday-Friday 8AM to 8PM EST (5AM to 5PM PST)
www.pioneerind.com