



PIONEER INDUSTRIES, INC.
 3325 S. Garfield Ave.
 Commerce, CA 90040
 (800) 338-9468
 www.pioneerind.com

INSTALLATION

Tools:



Model Number: 3MO170

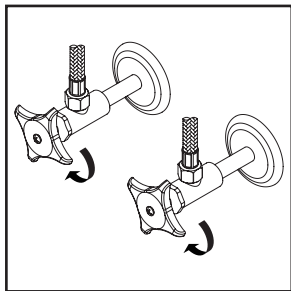
Warnings and Notes:

Check with local plumbing code requirements before installation.
 This product should be installed by a local listed plumber.
Do not use plumbers putty on threads.

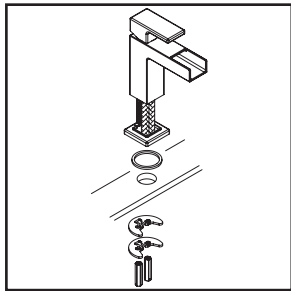


Installation Steps:

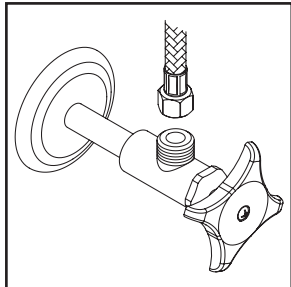
Single Handle Lavatory Faucet



(1) Shut off the water supply. Remove old faucet. Clean mounting surface in preparation for new faucet.

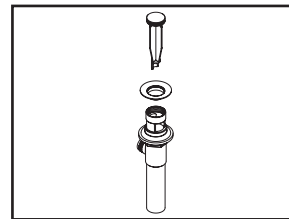


(2) Place escutcheon with gasket under the faucet then place the faucet in position on the sink. Slide mounting washer and mounting plate through mounting bolt from underneath the sink, tighten locknut to mounting bolt.

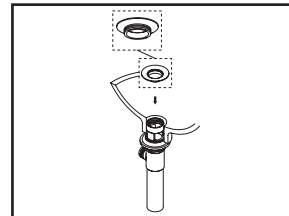


(3) Connect hot and cold inlet supply hoses to supply stops. For 1/2" connection; use 3/8" male to 1/2" female adapter for installation. Adapters are optional and not provided with the faucet. Turn on both sides of the supply stop.

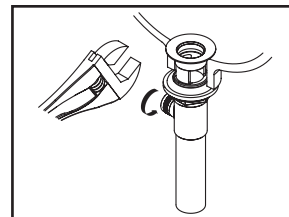
Pop-up Drain Installation:



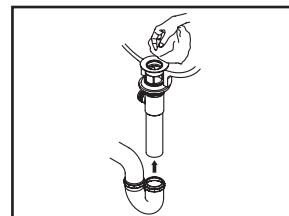
(1) Remove pop-up flange from body



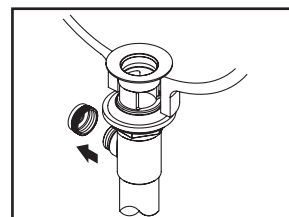
(2) Place a ring of plumbers putty on the bottom of flange.



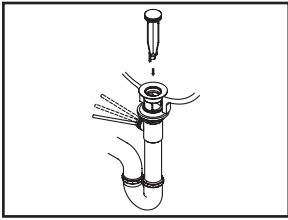
(3) Insert pop-up flange through drain hole and attach flange to the pop-up drain body. Apply Teflon tape on the threaded end of the tail piece and attach tail piece to the pop-up drain body. Ensure the pivot rod hole of the pop-up drain body faces towards the back of the sink. Tighten the locknut with the help of a wrench to secure the pop-up drain body.



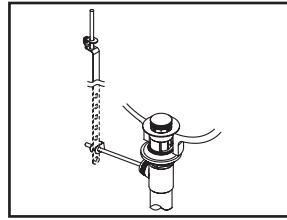
(4) Remove the excess plumbers putty. Connect the trap (check manufacturer's instructions for installation).



(5) Remove pivot rod nut from pop-up body, ensure the washers is in place, insert pivot rod, tighten pivot rod nut back to pop-up body.



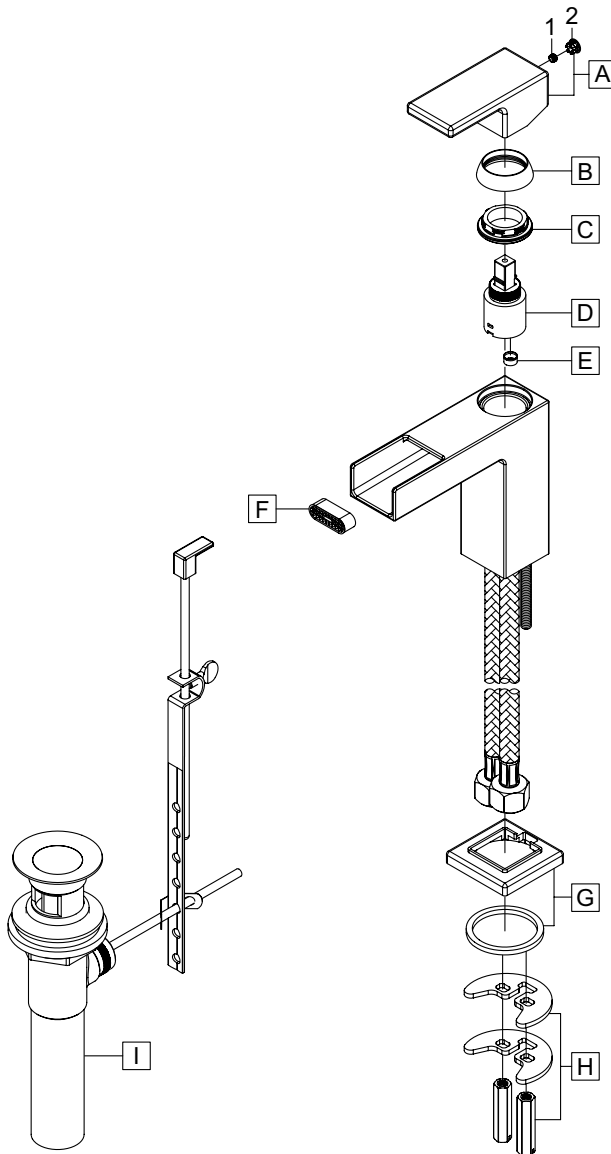
(6) Push pivot rod down, insert drain plug carefully. Test to ensure drain plug works properly.



(7) Connect lift rod strap to pivot rod by using clip. Tighten the thumbscrew to connect lift rod strap to pop-up lift rod.

Exploded Drawing:

* Note: Please specify finish/color when ordering.



	ITEM #	DESCRIPTION
A	X-1300019*	Metal Lever Handle
B	X-4300088*	Cap
C	X-4300089	Retainer Nut
D	OP-390003	Ceramic Disc Cartridge
E	OP-430045	1.2 GPM Restrictor
F	X-4300104	Flow Streamer
G	X-4300091*	Spout Escutcheon & Gasket
H	OP-530005	Mounting Kit
I	X-6300029*	Pop-Up Drain Assembly
1	X-4900044*	Hole Cover
2	X-4400099	Allen Screw



For more care information or trouble shooting inquiries about your Pioneer product, please call:
Pioneer Industries, Inc. (800) 338-9468
 Monday-Friday 8 AM to 8 PM EST (5 AM to 5 PM PST)
www.pioneerind.com