



ENGINEERING EXCELLENCE

Installation Guide

Two Handle Kitchen Widespread Faucet:

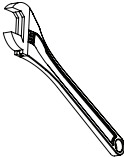
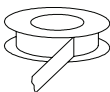

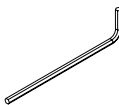
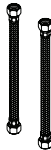
- | | | |
|-----------|-----------|-----------|
| • 2PR200* | • 2BR200* | • 2MT200* |
| • 2PR201* | • 2BR210* | • 2MT201* |
| • 2CB200* | • 2BR220 | • 2MT210* |
| • 2CB201* | • 2BR230* | • 2MT211* |
| • 2DM200* | • 2BR201* | |
| • 2DM201* | • 2BR211* | |
| • 2AM200* | • 2BR221 | |
| • 2AM201* | • 2BR231* | |

This product meets the following standards:

- ASME A112.18.1
- ANSI A117.1
- ANSI / NSF 61, SECTION 9
- CUPC / IAPMO LISTED / *ADA COMPLIANT
- CONTAINS NO MORE THAN 0.25% WEIGHTED AVERAGE LEAD CONTENT

Thank you for purchasing this Pioneer quality product.

Tools Required

				
Adjustable Wrench	Teflon Tape	Rags	3/32" Allen Wrench	Flex Hose

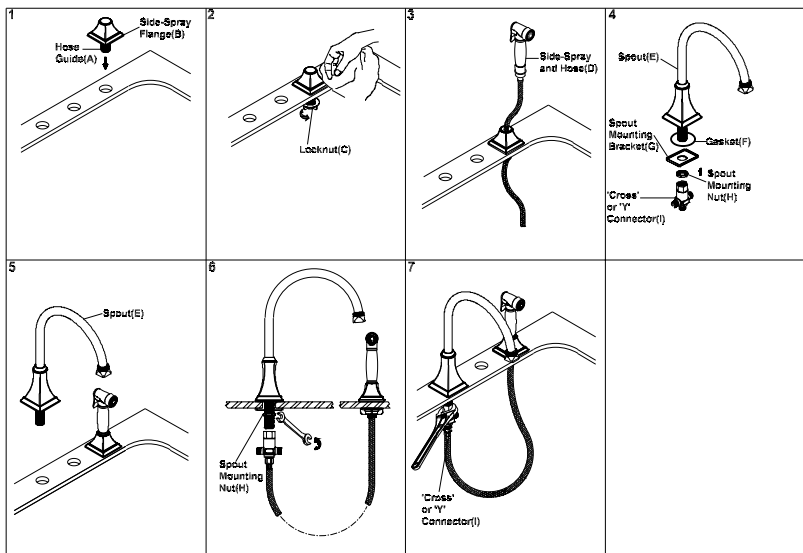
Prior to Installation

- Observe all local plumbing and building codes before you begin installation.
- Carefully shut off both hot and cold water supplies.
- Plug the sink drain with a soft cloth to prevent intrusion of debris or the loss of any parts.
- Pioneer reserves the right to make changes in the design of faucets without notice.

Faucet Installation

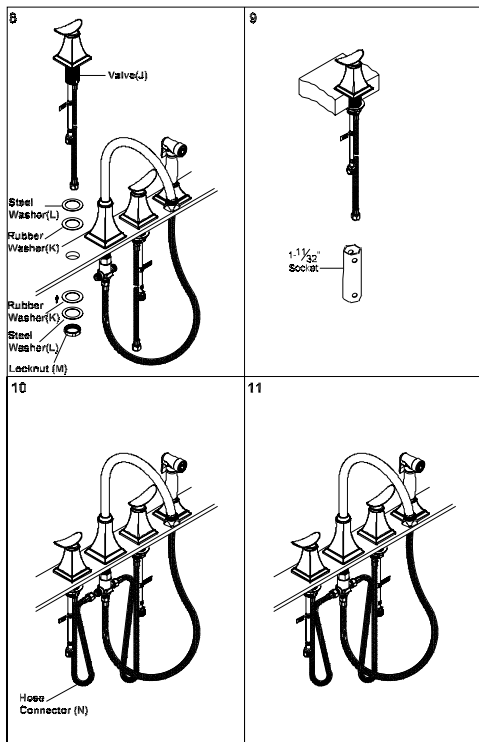
- 1. For the faucet with side spray** :- If there is supplied rubber washer, place the rubber washer under side spray flange (B), put adequate amount of plumbers putty underneath of side spray flange (B) for model doesn't have rubber washer. Slide the hose guide (A) through the hole.
2. Hand tighten the locknut (C) from underneath the mounting surface.
3. Insert the side spray and hose (D) through the hose guide (A).
4. Place the gasket (F) underneath of the spout (E).
5. Insert the spout (E) through mounting surface.
6. Slide the mounting bracket (G) through the spout shank from underneath the mounting surface. Thread and tighten the spout mounting nut (H). Do not overtighten.
7. Thread and tighten the "Cross"(for faucet with side spray) or "Y" connector (I) to the spout. Do not overtighten. For faucet with side spray:- Connect side spray hose to the "Cross" connector (I).

Faucet Installation Drawing



Faucet Installation

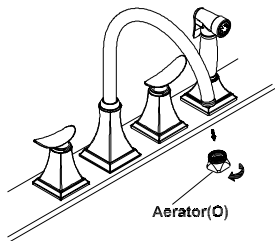
- The hot and cold side valves (J) are marked with 'HOT' and 'COLD' on the valve. Place rubber washer (K) and steel washer (L) underneath of the 'COLD' side valve. Slide the valve through mounting hole. Place rubber washer (K) and steel washer(L) from underneath of the valve.
- Ensure the handles are position correctly. Tighten the locknut (M) to the valve (J) with the help of 1-11/32" socket. Install the 'HOT' side valve same as 'COLD' side valve.
- Connect the valve outlet hose connector (N) to the "Cross" or "Y" connector (I).
- Ensure all the connections are installed correctly.



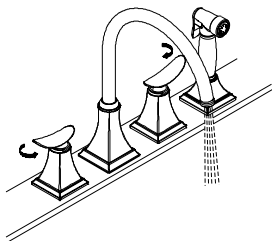
Faucet Installation

12. Connect the valves to inlet supply lines. Connect the supply stops to the inlet supply lines (left is hot water supply and right is cold water supply). Make sure inlet supply lines are securely tighten. Do not over-tighten. Turn on supply stop. Remove aerator (O).
13. Check for any leaks. Make sure all the connection are secure.
14. Open the handles. Flush and allow water to run at full flow for at least one minute. Check for the side spray function works properly. Close the handles.
15. Replace aerator (O).

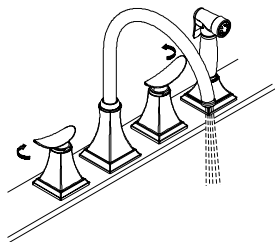
12



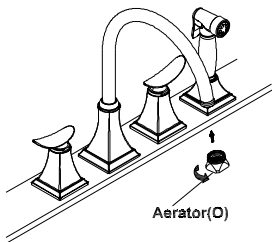
13



14



15



For more care information or trouble shooting inquiries about your Pioneer Product, please see the contact information on the back page.



ENGINEERING EXCELLENCE

3325 S. Garfield Ave. | Commerce, CA 90040
Telephone: (800) 338-9468 | (323) 888-8873 | Fax: (323) 888-9515
Hours: M - F, 7:30am to 5:00pm PST
www.pioneerind.com