



### MAINTENANCE AND CARE INSTRUCTIONS

Olympia products are designed and engineered under strict quality standards. Regular and proper care of our products will ensure years of trouble free service. To clean, simply wipe with a damp, soft cloth. Do not use abrasive or harsh cleaners as they may result in finish damage.

### TROUBLESHOOTING

A. If water leaks from the tub spout/ showerhead:	1. Shut off both hot and cold water supplies.
	2. Use screwdriver or allen wrench to remove handles (A1-A3).
	3. Remove trim flanges and sleeves (B,C).
	4. Remove stem extension (D), cartridge (E), springs & seats (F) and check for damage. If damage is found, replace.
	5. Replace stem extension (D), cartridge (E), springs & seats (F), sleeve (C), trim flanges (B) and handles (A1-A3).

### OLYMPIA FAUCETS, INC. LIMITED LIFETIME WARRANTY \*

Olympia Faucets, Inc. warrants its products to the original consumer purchaser to be free from defects in material and workmanship as long as the consumer purchaser owns it. Dated proof of purchase must accompany all warranty claims. PVD finishes carry a lifetime warranty in residential service.

Olympia Faucets, Inc. will replace, free of charge, to the original consumer purchaser, any and all parts that prove defective under normal installation, use, and service. Damage as a result of misuse, abuse, accident, or improper installation, will consequentially void this warranty. Replacement parts can be obtained from your local dealer or directly from Olympia Faucets. Olympia Faucets, Inc. recommends using a certified plumber for all faucet installation and repair.

This warranty is limited to replacement of defective parts only. Incidental and consequential damages, labor charges, repair, or replacement costs are expressly excluded. Some states do not allow the exclusion or limitation of incidental or consequential damages, so the above limitation may not apply to you. This warranty gives you specific legal rights, as you may have other rights of which vary from state to state.

Installation or maintenance and cleaning must be in compliance with instructions furnished with every Olympia product. If you find a problem with your product, please immediately contact your nearest Olympia Faucets, Inc. dealer or sales representative.

\* 2 year limited warranty on commercial and multi-family projects.



## INSTALLATION AND MAINTENANCE INSTRUCTIONS FOR OLYMPIA TWO & THREE HANDLE TUB AND SHOWER SETS

Caution: This product may not meet the current building code. This product is not pressure balanced. Pressure balanced products are available from Olympia. Please consult your nearest Olympia dealer.

### PRODUCT NUMBERS

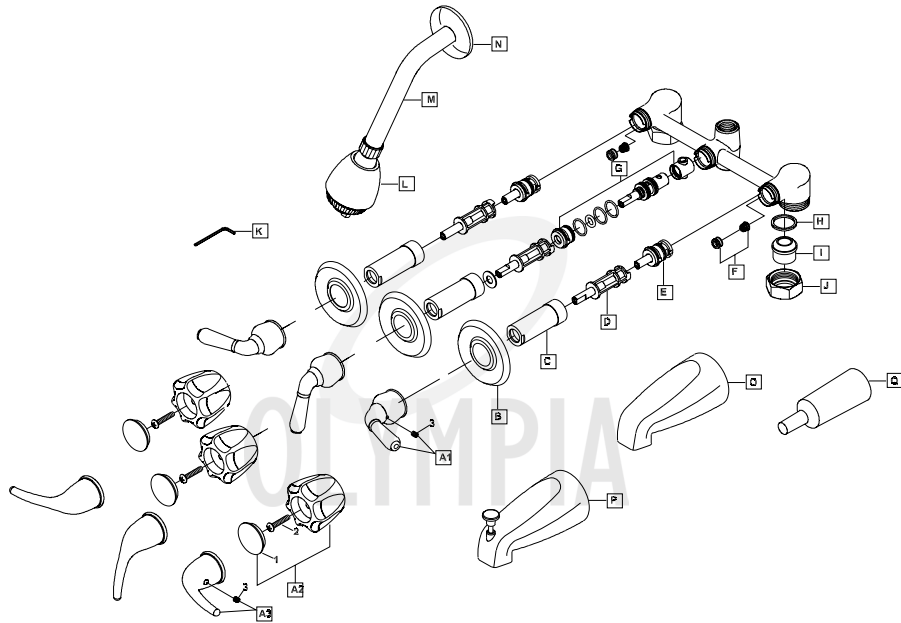
- #P-1230\*** Two Handle Tub and Shower Set
- #P-1231\*** Two Handle Tub Set
- #P-1232\*** Two Handle Shower Set
- #P-3230\*** Three Handle Tub and Shower Set
- #P-1240** Two Handle Tub and Shower Set-Acrylic Handles
- #P-1241** Two Handle Tub Set-Acrylic Handles
- #P-1242** Two Handle Shower Set-Acrylic Handles
- #P-3240** Three Handle Tub and Shower Set-Acrylic Handles
- #P-1250\*** Two Handle Tub and Shower Set-Lever Handles
- #P-1251\*** Two Handle Tub Set-Lever Handles
- #P-1252\*** Two Handle Shower Set-Lever Handles
- #P-3250\*** Three Handle Tub and Shower Set-Lever Handles



ADA\* 



Thank you for purchasing this quality product. Olympia products are rigorously tested to provide long service under normal conditions. Prior to installation, familiarize yourself with this parts diagram. Make sure that you have all of the illustrated parts for your Olympia product before installation.



M	OP-640002	Shower Arm		ITEM #	DESCRIPTION
N	OP-640001	Shower Flange	A1	OP-140009	Lever Handle
O	OP-640014	1/2" IPS Tub Spout (For P-32X0, P-12X1)	A2	OP-140013C,H,V	Acrylic Handle-Cold,Hot, Diverter (For P-124X, P-324X)
P	OP-640015	1/2" IPS Diverter Tub Spout (For P-12X0)	A3	OP-190015C	Lever Handle (For P-125X, P-3250)
Q	OP-440017	Protective Cover	B	OP-440037	Flange
1	OP-490012C,H,V	Cap-Cold,Hot, Diverter	C	OP-440036	Sleeve
2	OP-490025	Handle Screw	D	OP-440035	Stem Extension
3	OP-490029	Allen Screw	E	OP-340006C,H	Cartridge-Cold,Hot
			F	OP-490041	Springs & Seats
			G	OP-340007	Diverter Stem Unit (For P-32X0)
			H	OP-440050	Washer
			I	OP-440015	Union
			J	OP-440016	Nut
			K	OP-490011	3/32" Allen Wrench
			L	OP-640003	Adjustable Showerhead 2.5 GPM



For more care information or trouble shooting inquiries about your Olympia product, please call:  
**OLYMPIA FAUCETS, INC.** (888) 772-7701  
 Central Standard Time: 8:00am ~ 7:00pm  
[www.olympiafaucets.com](http://www.olympiafaucets.com)

# INSTALLATION INSTRUCTIONS

## Tools you will need:

- Plumbers Putty
- Teflon Tape
- Screwdriver
- Adjustable Wrench
- Pipe Wrench
- Soft Cloth
- Allen Wrench

## Tub And Shower INSTALLATION:

1. Carefully shut off both hot and cold water supplies. Cover the drain with a soft cloth to prevent the loss of any parts. If this installation is for a replacement, carefully remove the existing valve and clean the entire mounting surface.
- 2a. For 1/2" pipe thread connection: connect water supplies to left union (hot) and right union (cold) with Teflon Tape. When tighten nut, ensure washer (H) is placed between union and valve body.
- 2b. For 1/2" sweat copper tubing connections: remove rubber and plastic parts before soldering to prevent damage. Solder water supplies to left union (hot) and right union (cold) valve body inlets. When tighten nut, ensure washer (H) is placed between union and valve body.
- 2c. For PEX and CPVC tubing connections: connect water supplies to left union (hot) and right union (cold) with Teflon Tape. When tighten nut, ensure washer (H) is placed between union and valve body.
3. Insert shower flange (N) onto the shower arm (M). Install shower arm (M). Then install showerhead (L). Apply teflon tape at threaded connection.
4. Install tub spout (O,P). Place handles (A1,A2 or A3) on stem extension (D) and turn on hot and cold water to full open for one minute to flush thoroughly. Check for leaks & diverter function for tub and shower set.
5. Shut off water. Remove handles (A1,A2 or A3). Install trim flanges (B) & showerhead (L). Re-install handles (A1,A2 or A3).