



OLYMPIA FAUCETS, INC.
 3325 S. Garfield Ave.
 Commerce, CA 90040
 (888) 772-7701
 www.olympi faucets.com

INSTALLATION

Tools:



Adjustable Wrench



Plumbers Putty



Teflon Tape



Rags



Model Number: P-1131B, P-1131B-CP

Warnings and Notes:

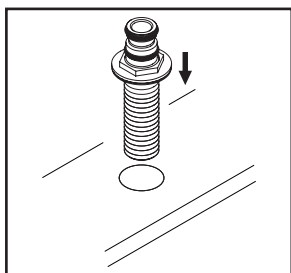
Check with local plumbing code requirements before installation.
 This product should be installed by a local listed plumber.
Do not use plumbers putty on threads.

Installation Steps:

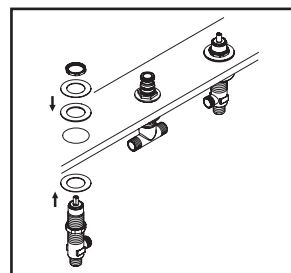
Two Handle Roman Tub Valve Set

Series	'A'	'B'	'C'
T-4DM610	1 1/2"	1 5/16"	X
T-4MT610	1 5/16"	1 3/4"	X
T-4MO610	1 3/8"	1 3/4"	X
P-1131T	1 3/4"	2 1/8"	1 5/8"
P-1171T			

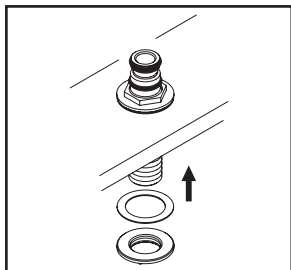
(1) Please refer to the chart of proper heights for the faucet model to be installed.
 For deck thickness is equal to or less than 1-1/8", you don't need to use stem extension.
 For deck thickness is more than 1-1/8" and up to 1-1/2", you need to use stem extension.



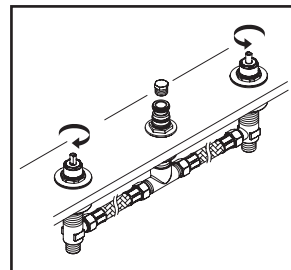
(2) Shut off both water supply lines. Remove test plug from top of the shank. Screw locknut onto shank from the bottom, slide steel washer under locknut and then slide rubber washer under steel washer. Drop shank through spout mounting hole.



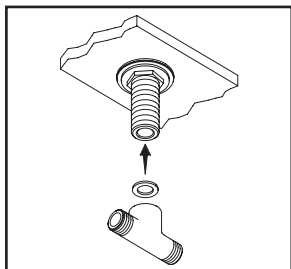
(5) Thread the locknut on side valve lower and slide steel washer on side valve, insert side valve through mounting hole from underneath the deck. Please refer to the above chart for the faucet model to be installed to adjust locknut to the proper height of the tip of stem above finished surface, adjust outlet of the side valve to face center to ensure handle operates in proper direction, slide rubber washer, steel washer and tighten locknut from top of the side valve. Install the other side valve as the same procedure.



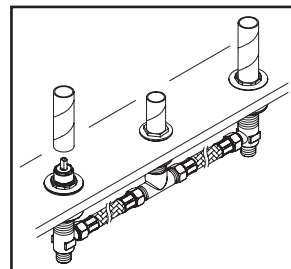
(3) Please refer to the above chart for the faucet model to be installed to adjust locknut to the proper height of the shank above finished surface. Slide steel washer then thread and tighten the second locknut from bottom of the shank.



(6) Attach both flex connector hoses to outlet of the side valves and "T" connector. Connect water supply lines to inlet of the side valves. Apply Teflon tape on thread area of test plug, tighten test plug back to top of the shank. Turn on water supply lines and check for any leaks.



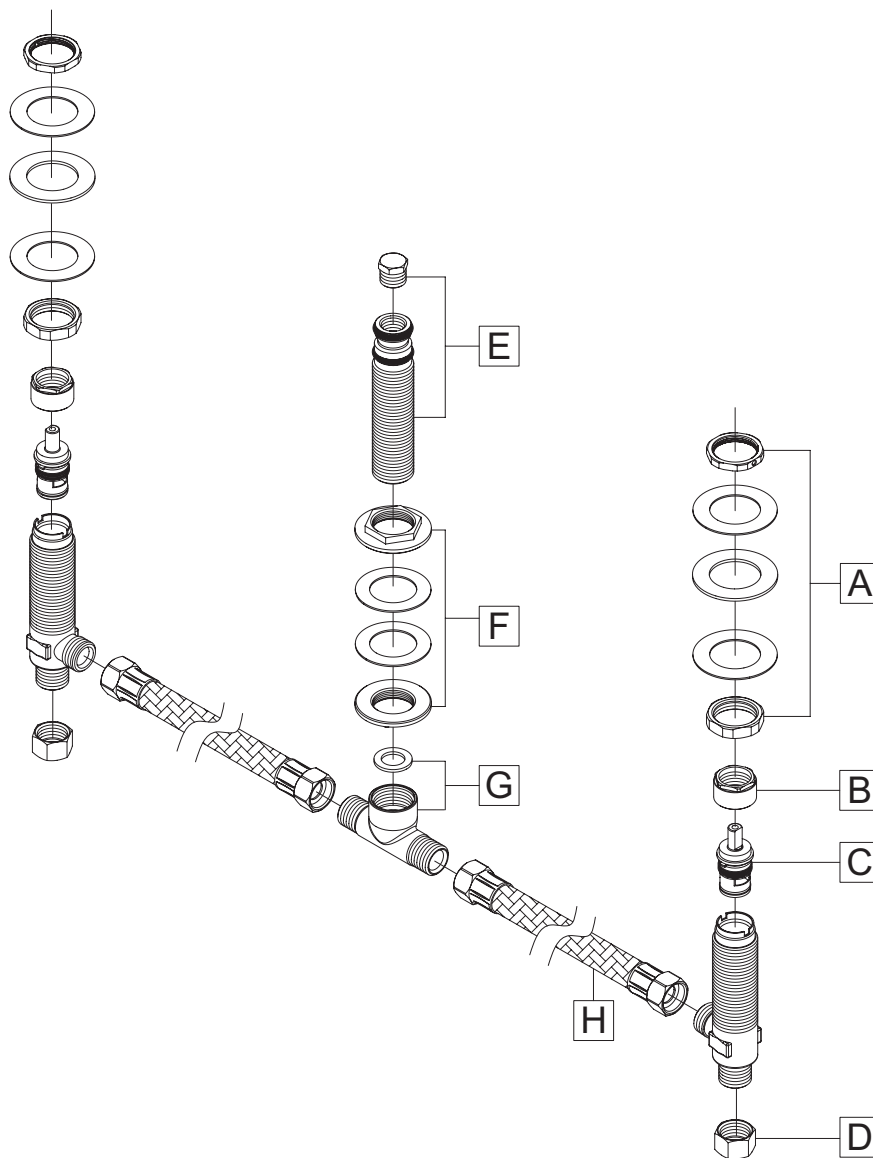
(4) Make sure rubber washer is inside the "T" connector, attach and tighten "T" connector to bottom of the shank.



(7) Install mud guard on top of the shank and side valves.

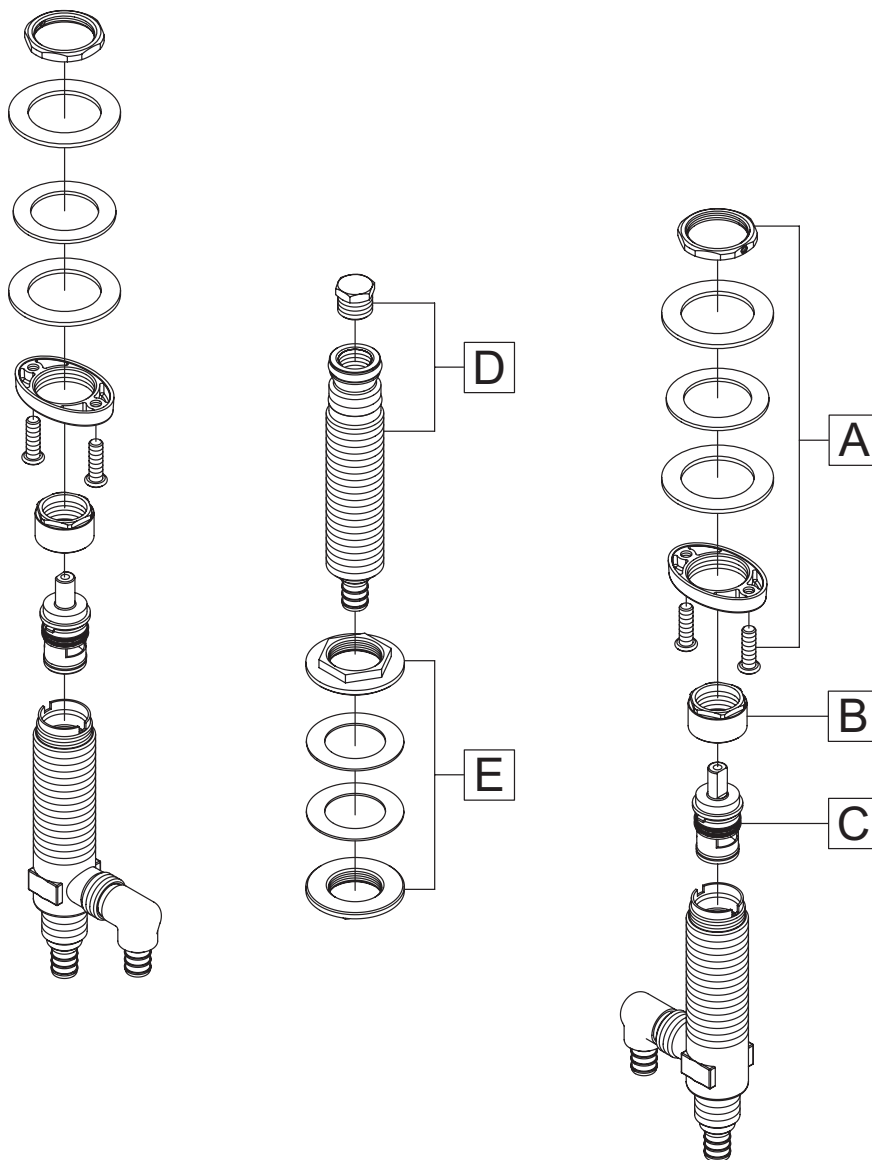
Exploded Drawing (P-1131B):

	ITEM #	DESCRIPTION
A	OP-540004	Valve Mounting Kit
B	OP-490006	Bonnet Nut
C	OP-340004C, H	Ceramic Stem-Cold, Hot
D	OP-590001	Supply Nut
E	OP-540006	Shank & Test Plug
F	OP-540005	Spout Mounting Kit
G	OP-440026	"T" Connector & Washer
H	OP-440025	Flex Hose



Exploded Drawing (P-1131B-CP):

	ITEM #	DESCRIPTION
A	OP-540007	Valve Mounting Kit
B	OP-490006	Bonnet Nut
C	OP-340004C, H	Ceramic Stem-Cold, Hot
D	OP-540008	Shank & Test Plug
E	OP-540005	Spout Mounting Kit



For more care information or trouble shooting inquiries about your Olympia product, Please call:
OLYMPIA FAUCETS, INC. (888) 772-7701
 Monday-Friday 8 AM to 8 PM EST (5 AM to 5 PM PST)
www.olympiafaucets.com