

**Sublime 6030 (right hand drain)**

Product code : **SU6030R**

Draft revision : **20130422133752**

External dimensions : **60" x 30" x 21,5" [152,4 cm x 76,2 cm x 54,6 cm]**

Series : **deck mount**

Seats : **1**

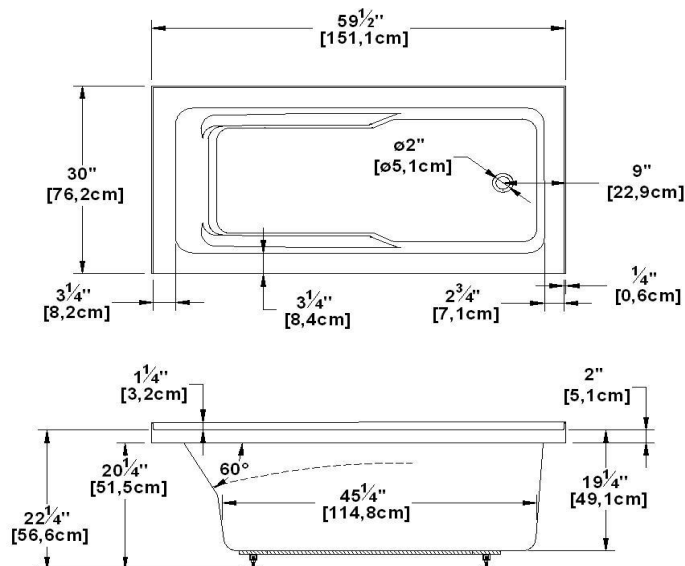
2012 catalog page : **32**

Low-profile support : **yes**

Arm rests : **yes**

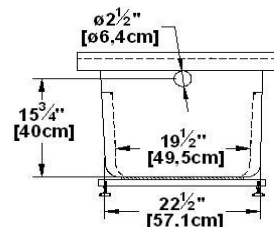
Low-profile available : **no**

**Draft and specs**



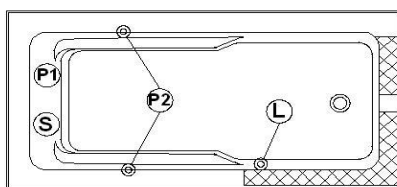
Specifications
Capacity : <b>40 IMP Gal. / 52,2 US Gal. / 181,8 liters</b>
AeroMassage™ : <b>40 Easy Clean™ air jets</b>
Super AeroMassage™ : <b>AeroMassage™ + 12 Easy Clean™ air jets</b>
Dynamic Turbo™ : <b>4 Confort Pulse jets / 4 Confort Swirl jets</b>
Comfort Air™ : <b>40 Easy Clean™ air jets</b>
Characteristics : <b>Integrated tile flanges on 3 sides</b>

Remarks
*all measures have a precision of ± 1/4" (0,63cm)
*internal dimensions taken at 4" (10cm) from bath bottom
*capacity is measured by filling the soaker to 1-1/2" under the overflow
*textured skirt available on all Freestanding products
*shelf height is 3/4" on all "low-profile" models



**WARNING :** If this bath is multiple ordered nested, its height will be about 1-1/2" (1 inch and a half) lower and will not have adjustable feet.

**Options and installation**



accessories and decorative lines positions are approximative

Additional(s) note(s) :

**Integrated acrylic tile flanges. If system, delivered with keypad not installed.**

Legend		
(S) Blower	(L) Chromatherapy light	
(P1) Pump	(P2) Grab bar	(C) Keypad
Recommended faucets drilling location*		
Deck cut-out line - - - - -		

Available models	
Model	Availability
Soaker alone	✓
Comfort Air™	✓
AeroMassage™	✓
Super AeroMassage™	✓
Dynamic Turbo™ (not available in the U.S.)	✓
Dynamic Turbo™ + AeroMassage™	✓
Dynamic Turbo™ + Super AeroMassage™	✓

Available recommended options
Front skirt : <i>SP60</i>
Recommended drain : <i>WOCO14 (chrome finish)</i>
Tile flanges : <i>integrated</i>
Remote control** : <i>available</i>
**Floating

\*It is possible to install the faucets elsewhere on the product. The installer must verify that there are no piping or wires before drilling.

**IMPORTANT NOTE :** Specifications, dimensions and models are subject to change.

Visit our website <http://www.oceania-attitude.com> to access up-to-date dimensions and informations. In all cases, information on the website is the most up-to-date. Dimensions may vary slightly. To ensure proper fit, measurements must be taken on the product directly.

**Head office**

591, avenue des Entreprises  
 Thetford Mines, Quebec  
 CANADA G6H 4B2

**Phone numbers**

No-charge : 1-877-332-4224  
 Fax : 1-866-460-4334

**Internet**

Web : <http://www.oceania-attitude.com>  
 Email : [info@oceaniabaths.com](mailto:info@oceaniabaths.com)