

Oasis 3-Piece, 60 x 30 Bathtub With ActivLife 3-Wall Mid-Level Reinforcement Wrap Package

30-inch / Private Access / Reinforced Only



Specification – Oasis 3-piece, 60 x 30-inch deep, FRP gelcoat bathtub model TS3P-6030, offered in a standard 16-inch or 17.25-inch (ABF) apron height. ActivLife package includes factory applied, 3-wall, mid-level reinforcement, exceeding (HUD/FHA) 'Fair Housing' requirements.

Standards Certification:

The bathtub listed is manufactured in compliance with ANSI Z124 Standards, and certified through an ongoing, independent quality assurance and testing program.



TS3P-6030 R / 3SM

(RH drain / mid-level reinforcement wrap)
Model & Package Illustrated

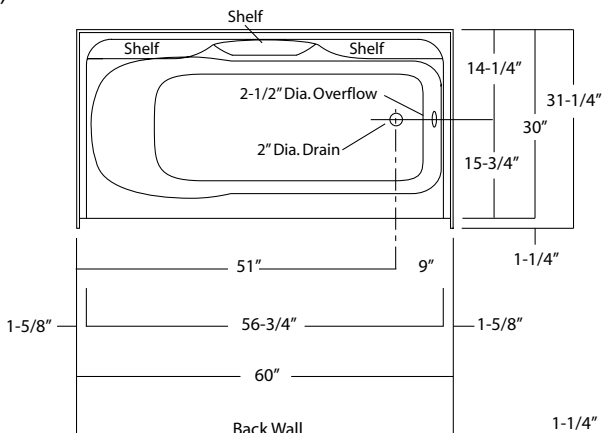
NOTE: ADA & ANSI regulations limit the use of reinforced only packages to certain non-public use applications (see ADA & ANSI standards for restrictions).



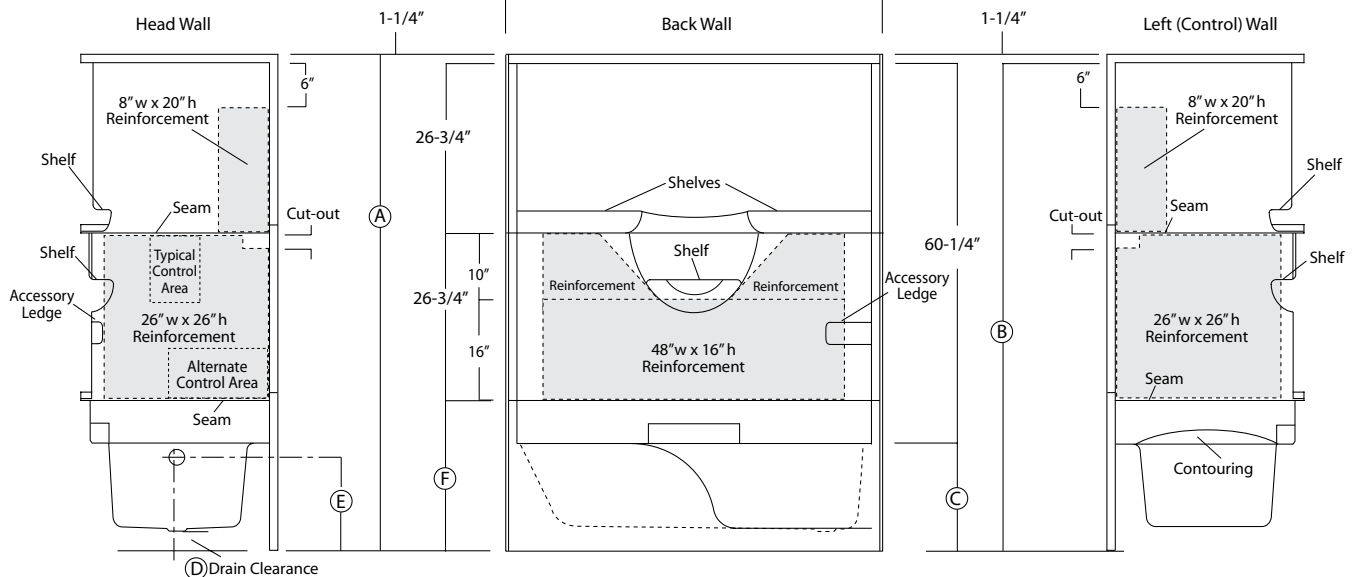
Home Innovation
LAB CERTIFIED™



	Base Unit	ABF Unit
A	77-1/2"	78-3/4"
B	76-1/4"	77-1/2"
C	16"	17-1/4"
D	1-3/4"	3"
E	13-3/4"	15"
F	22-3/4"	24"



Enclosure Size:
56-3/4" w (max) x 60-1/4" h (max)



Dimensions shown are maximum. Due to the nature of the materials involved, actual unit dimensions can vary (tolerances: +0 / -3/8 inch). Oasis reserves the right to modify or discontinue product and/or associated equipment without prior written or verbal notification or obligation.

Model ID	Package Code	Description (define configuration referencing drain end)
TS3P-6030 L (Std or ABF)	/ 3SM (left drain)	60" x 30", 3-piece, end drain, tub-shower, with 16" (Std) or 17.25" (ABF) apron, and ActivLife 3-side, mid-level reinforcement.
TS3P-6030 R (Std or ABF)	/ 3SM (right drain)	

Package Notes:

1. Model available without listed package.
2. For REINFORCEMENT ONLY for bars only (HUD/FHA-Fair Housing), see ActivLife "FH" package code.
3. Model available with a full reinforcement wrap (with or without package components), see ActivLife "3SF" package code.
4. Model available with bar ONLY packages, see ActivLife "BP1-60", "BP2-60", "4BAR", and "5BAR" package codes.
5. Model available with ANSI or ADA compliant bar and seat packages, see "ANS09" and "ADA10" package codes.

