

FLAT WALL SHOWER

Oasis

WX Wall Flange Detail



FLAT WALL MODEL

SHFW-WX3D-3837

Rough-In Dimensions

38" wide x 36" deep x 76-3/4" high

Finished Dimensions

38" wide x 37" deep x 75-1/2" high

Unit Features



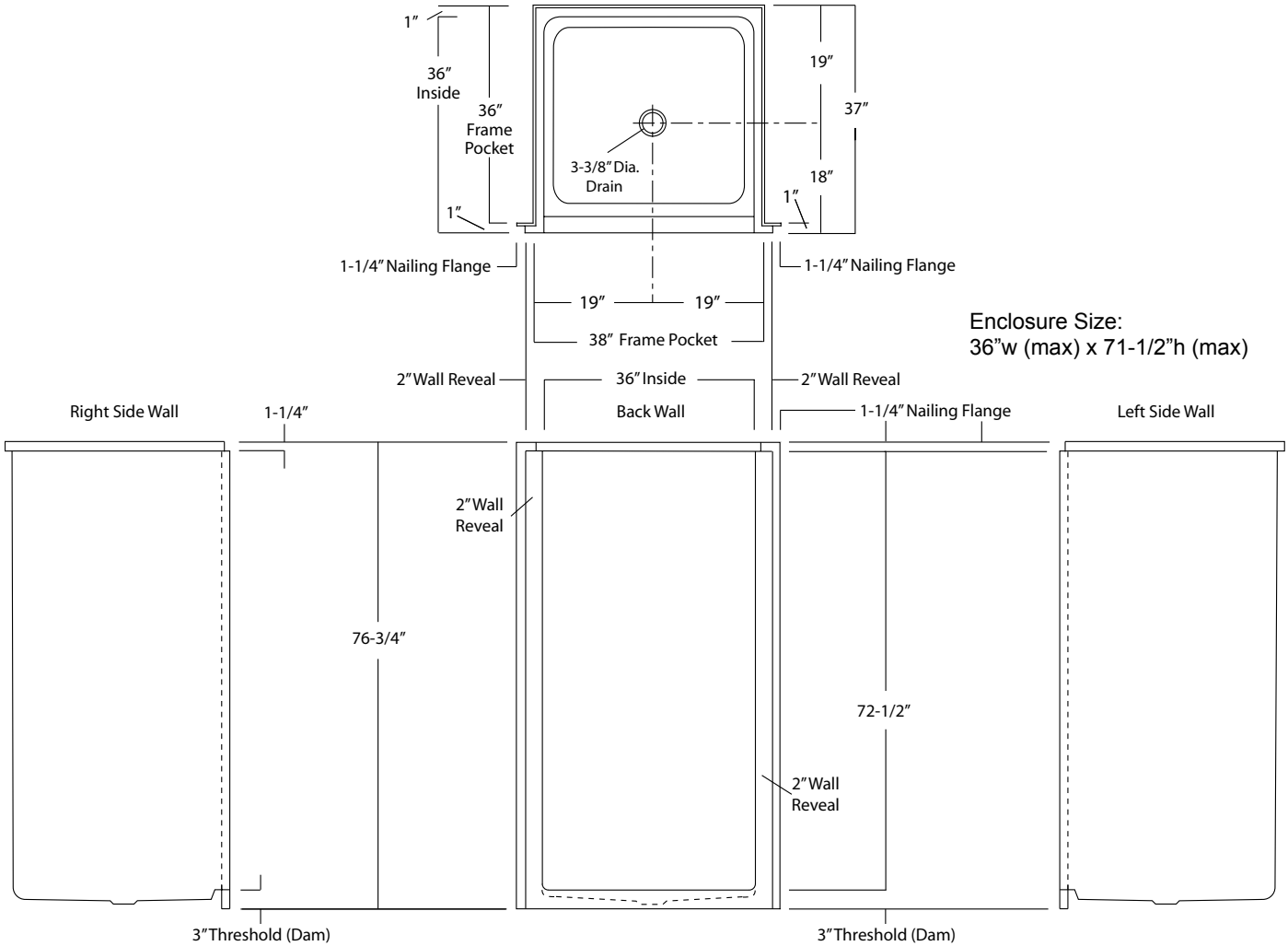
- One - Piece Fiberglass Composite Construction
- Sanitary Grade Polyester Gelcoat Surface
- 3-3/8" Dia. Center Drain (see reverse side for location)
- 3" High Finished Threshold
- Expanded Entry Wall Reveal Minimizes Transfer Space
- Flat Wall Design To Accommodate Grab Bar Applications
- Textured Floor Pattern
- Balsa Wood Core Floor Structure

Special Notes

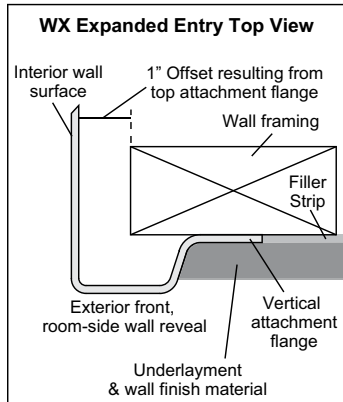
- Factory Applied Reinforcement Packages Available
- Factory Applied Bar Configurations Available

Order No.: SHFW-WX3D-3837

38" x 37" (36" x 36" interior dimension), one-piece gelcoated fiberglass, flat-wall shower stall with 3-inch high finished threshold, expanded shower entry wall reveal to reduce transfer space, wall surround, and center drain. Flat wall design allows for the independent installation of grab bars and seat.



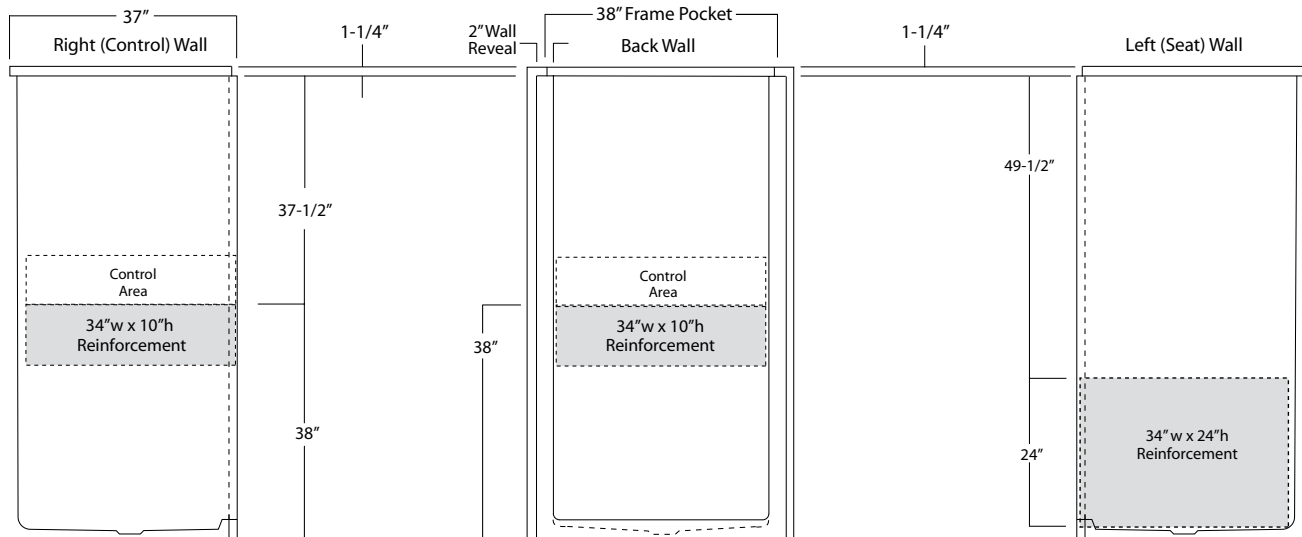
NOTE: The raised threshold of this model DOES NOT meet ADA or ANSI compliance.



Package Order No.: FH-RS or LS (LS shown) (Fair Housing wall reinforcement)

Package Includes: Factory applied, ActivLife, HUD-FHA compliant (Fair Housing), structurally reinforced wall areas (as shown) for independent field application of bars and seat.

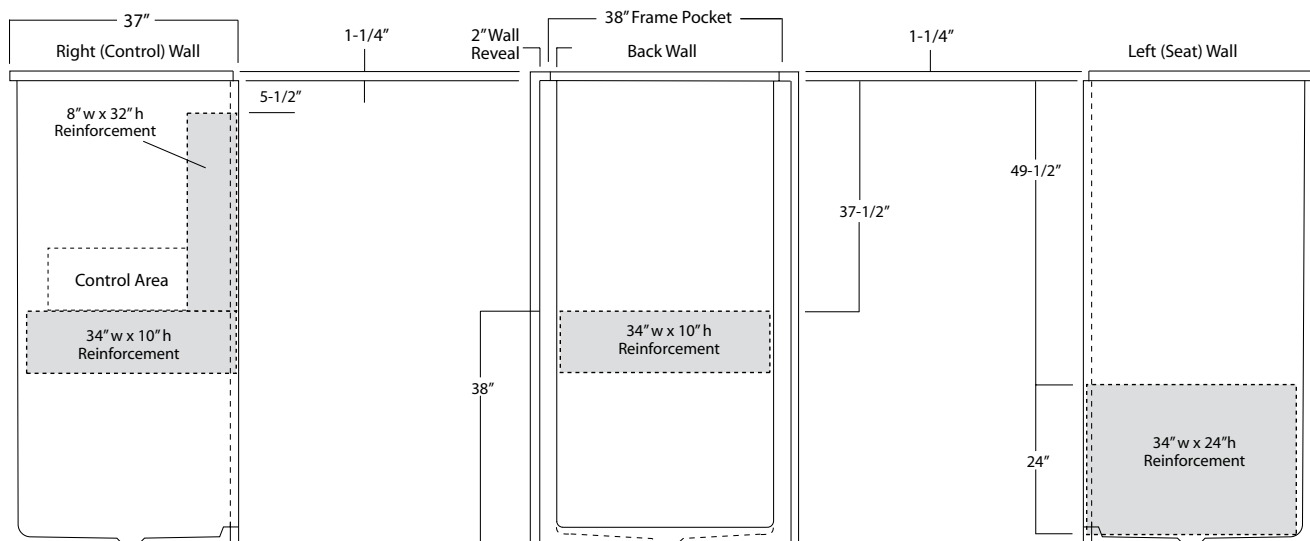
NOTE: "RS or LS" designates RH or LH reinforced seat wall.



Package Order No.: FHV-RS or LS (LS shown) (Fair Housing wall reinforcement)

Package Includes: Factory applied, ActivLife, HUD-FHA compliant (Fair Housing), structurally reinforced wall areas (as shown) for independent field application of bars and seat.

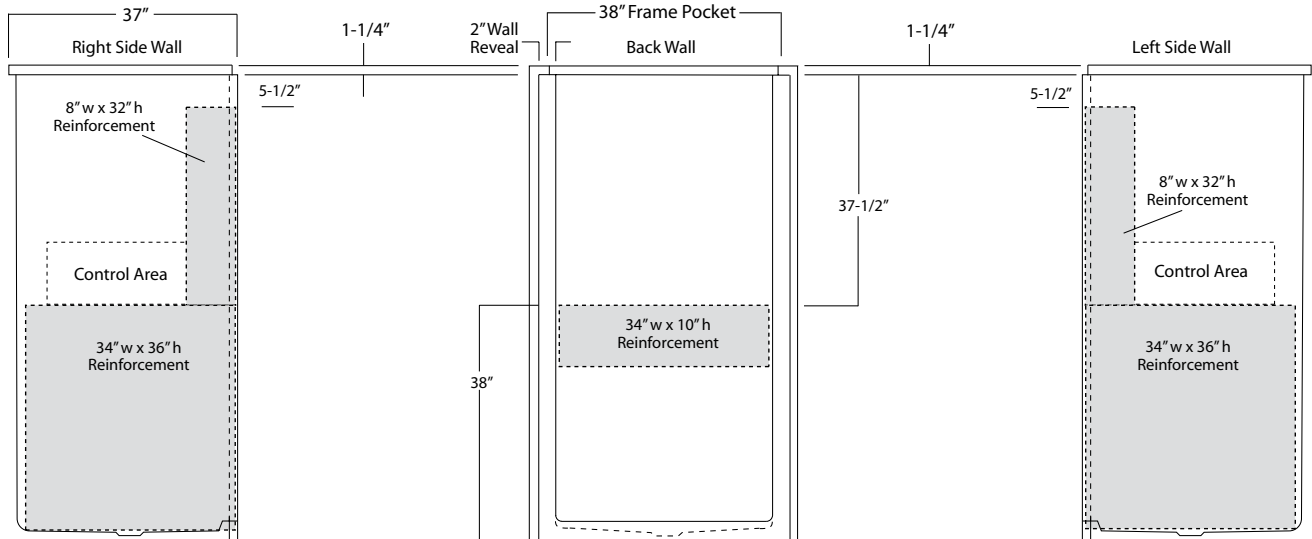
NOTE: "RS or LS" designates RH or LH reinforced seat wall.



Package Order No.: FHV-DS (Fair Housing wall reinforcement)

Package Includes: Factory applied, ActivLife, HUD-FHA compliant (Fair Housing), structurally reinforced wall areas (as shown) for independent field application of bars and seat.

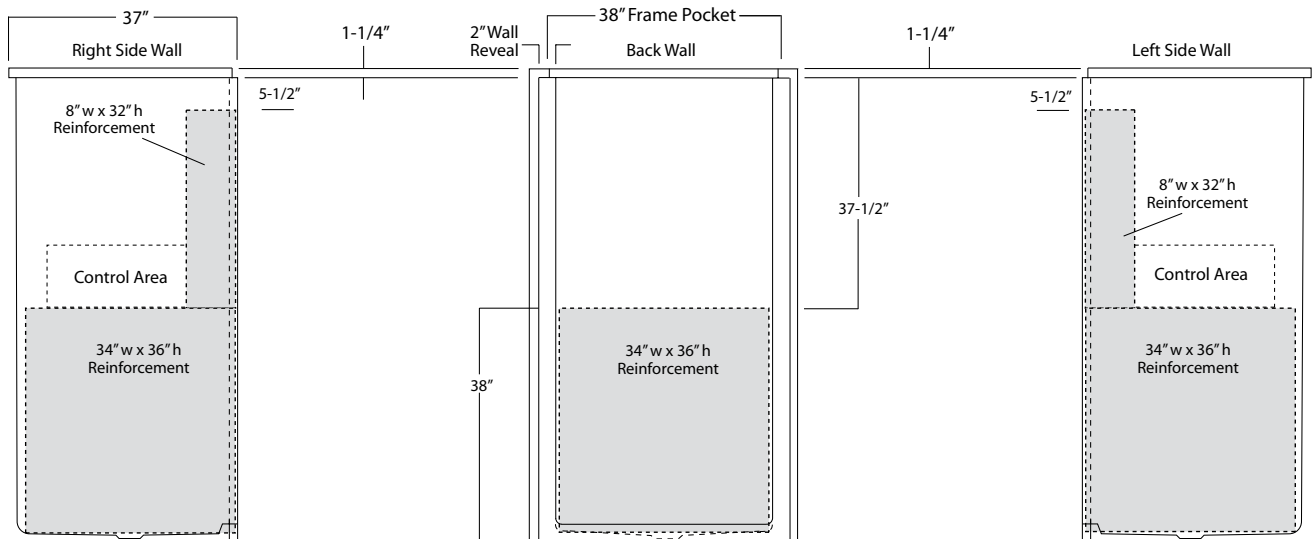
NOTE: Factory installed component packages available with listed reinforcement.



Package Order No.: 3SM (3-side, mid-level wall reinforcement)

Package Includes: Factory applied, ActivLife, 3-side, mid-level, structurally reinforced wall areas (as shown), exceeding 'Fair Housing' (HUD/FHA) requirements, for independent field application of bars and seat.

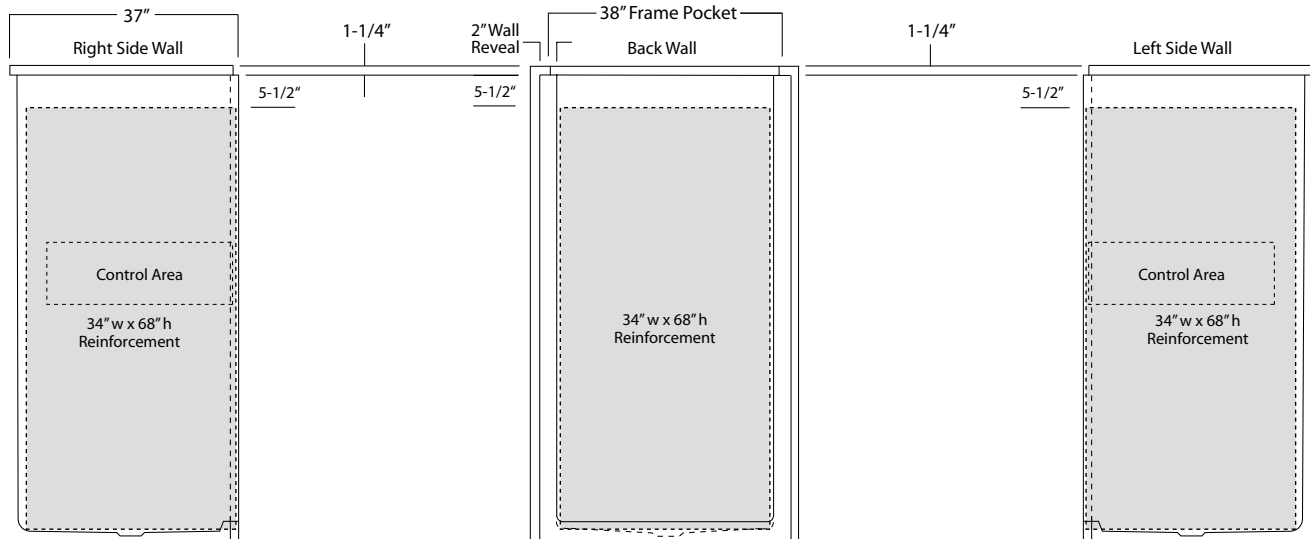
NOTE: Factory installed component packages available with listed reinforcement.



Package Order No.: 3SF (3-side, full-wall reinforcement)

Package Includes: Factory applied, ActivLife, 3-side, full-wrap, structurally reinforced wall areas (as shown), exceeding 'Fair Housing' (HUD/FHA) requirements, for the independent field application of bars and seat.

NOTE: Factory installed component packages available with listed reinforcement.



Package Order No.: ICBAR-(R or L) (2-wall / single-bar only package)

ICBAR-(R or L) WHT (1-1/4" dia., white powder coat, 2-wall / single-bar only package)

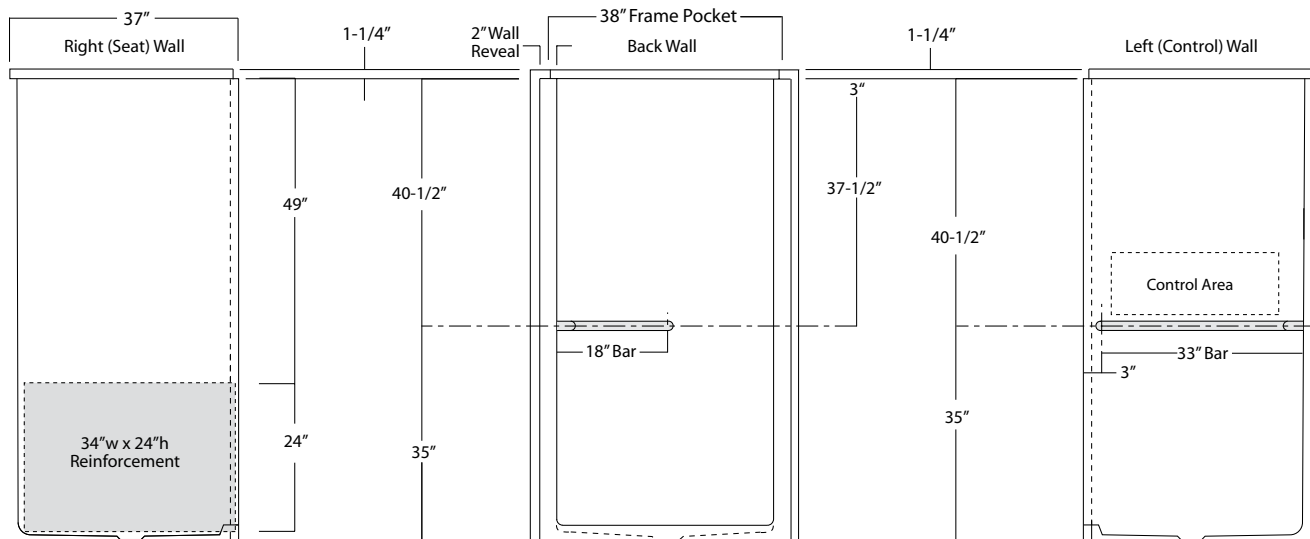
ICBAR-(R or L) OFW (1-1/4" dia., off-white powder coat, 2-wall / single-bar only package)

ICBAR-(R or L) SNK (1-1/4" dia., satin nickel, 2-wall / single-bar only package)

Package Includes: Factory installed, ActivLife, 2-wall bar package with horizontal corner bar across the control wall and back wall, basic reinforcement for components and reinforcement for a seat opposite the control wall.

NOTES: "R or L" designates RH or LH control wall.

Enhanced reinforcement available with listed component package.



Package Order No.: 2BAR-(R or L) (2-wall / 3-bar only package)
2BAR-(R or L) WHT (1-1/4" dia., white powder coat, 2-wall / 2-bar only package)
2BAR-(R or L) OFW (1-1/4" dia., off-white powder coat, 2-wall / 2-bar only package)
2BAR-(R or L) SNK (1-1/4" dia., satin nickel, 2-wall / 2-bar only package)

Package Includes: Factory installed, ActivLife, 2-wall bar package with horizontal corner bar across the control wall and back wall, a single vertical bar at entry on the control wall, basic reinforcement for components and reinforcement for a seat opposite the control wall.
 NOTES: "R or L" designates RH or LH control wall.

Enhanced reinforcement available with listed component package.

