

# BARRIER-FREE SHOWER

**Oasis**

WX Wall & Floor Flange Detail



FLAT WALL MODEL

**SHFW-WX-3837**

Rough-In Dimensions

38" wide x 36" deep x 76-3/4" high

Finished Dimensions

38" wide x 37" deep x 75-1/2" high

Unit Features



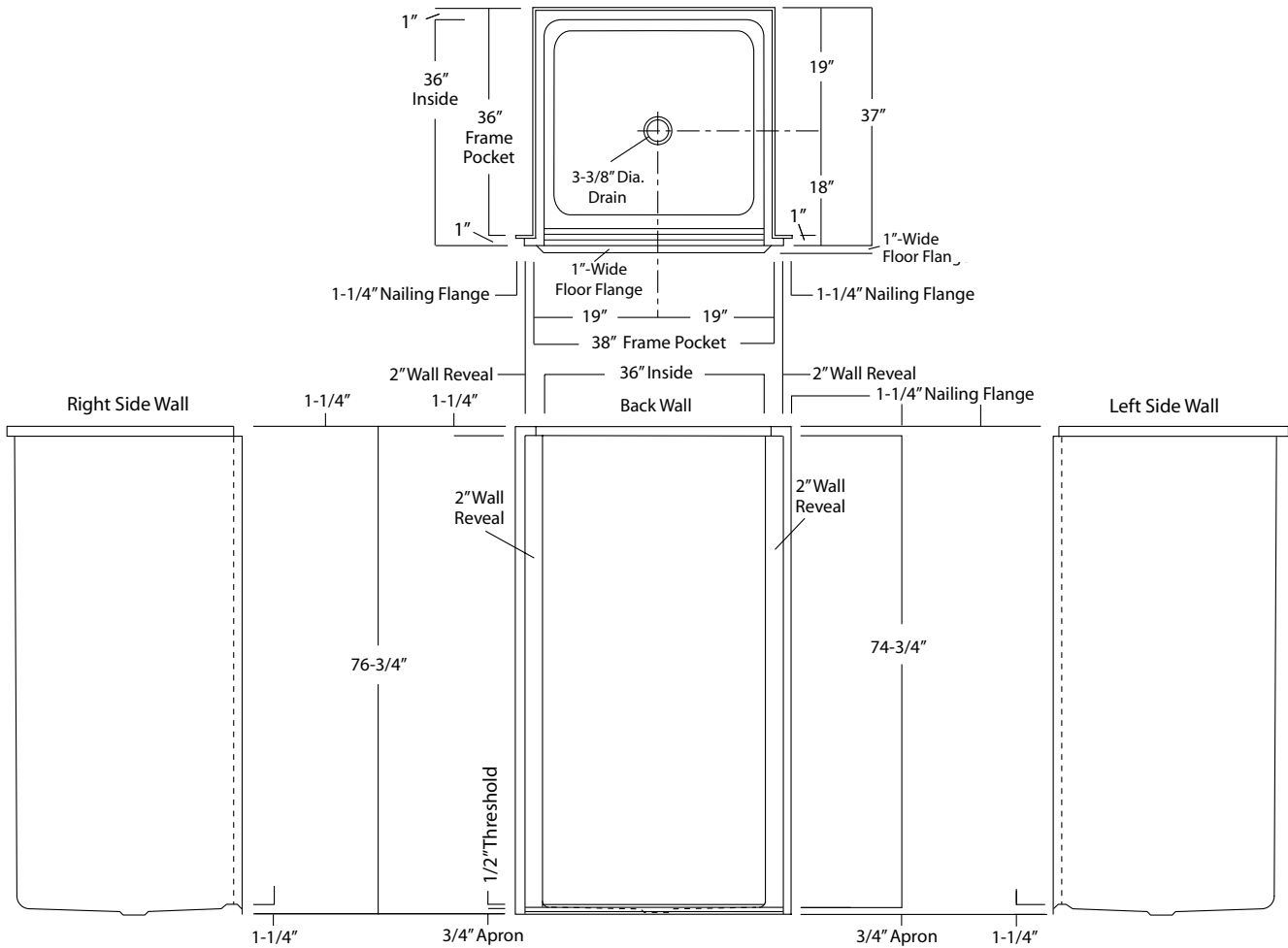
- One - Piece Fiberglass Composite Construction
- Sanitary Grade Polyester Gelcoat Surface
- 3-3/8" Dia. Center Drain (see reverse side for location)
- 1/2" Threshold To Aid In Keeping Water Within Confines of Unit
- Contoured Threshold To Aid Entry And Exit
- Expanded Entry Wall Reveal Minimizes Transfer Space
- 1" Floor Flange To Secure Unit Along Threshold
- Textured Floor Pattern

Special Notes

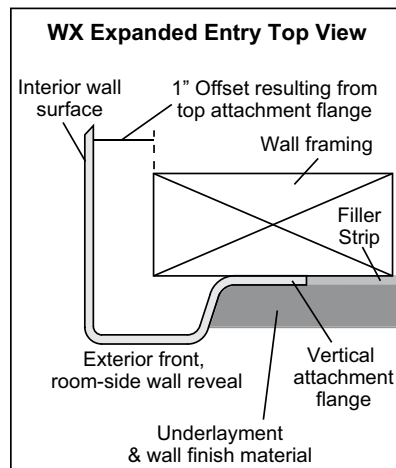
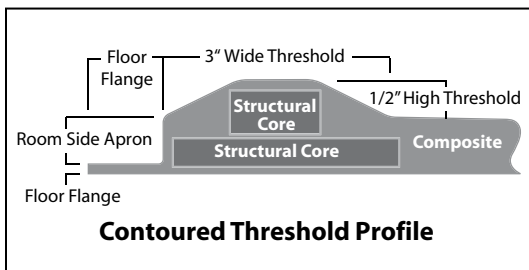
- Factory Applied Reinforcement Packages Available
- Factory Applied Bar Configurations Available
- Factory Applied ADA & ANSI Compliant Bar & Seat Packages Available

Order No.: SHFW-WX-3837

38" x 37" (36" x 36" interior dimension), one-piece gelcoated fiberglass, flat-wall shower stall with expanded shower entry wall reveal to reduce the transfer space from wheelchair, 1/2-inch high maximum finished threshold, floor attachment flange, wall surround, and center drain.



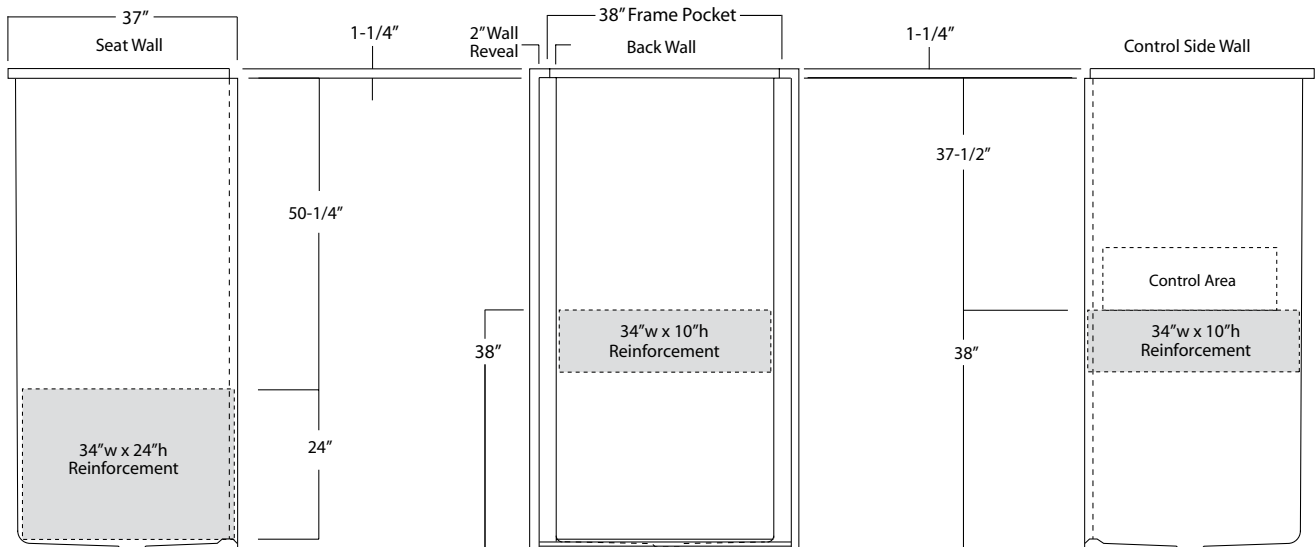
**NOTE:** ADA & ANSI regulations limit the use of reinforced only and seat deleted packages to certain non-public use applications (see ADA & ANSI standards for restrictions).



Package Order No.: FH-RS or LS (RS shown) (Fair Housing wall reinforcement)

Package Includes: Factory applied, ActivLife, HUD-FHA compliant (Fair Housing), structurally reinforced wall areas (as shown) for independent field application of bars and seat.

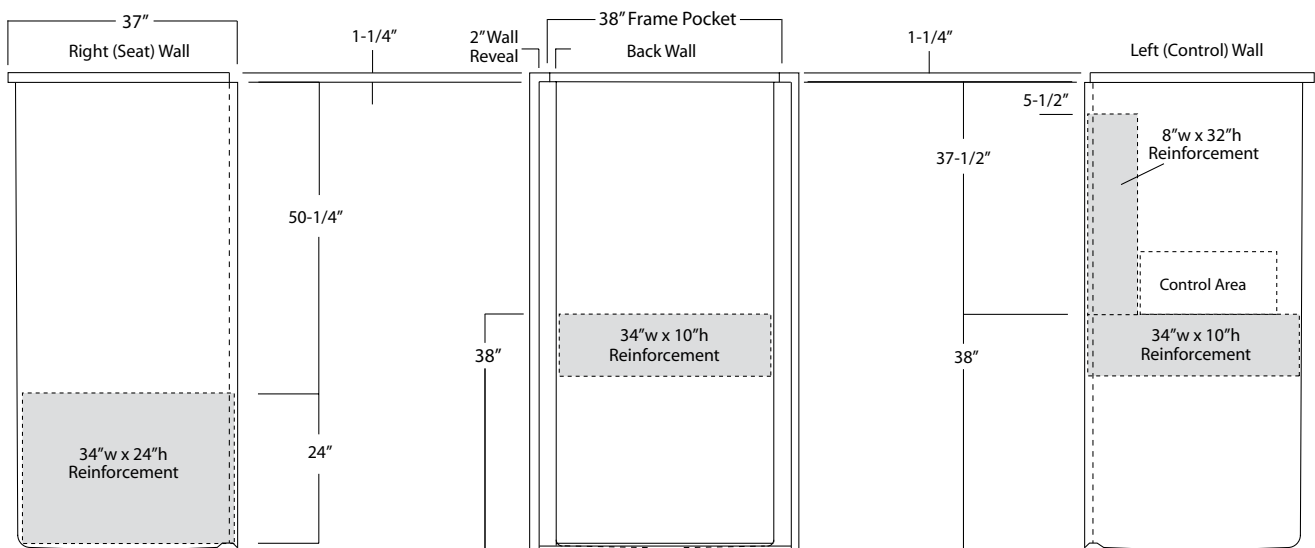
NOTE: "RS or LS" designates RH or LH reinforced seat wall.



Package Order No.: FHV-RS or LS (RS shown) (Fair Housing wall reinforcement)

Package Includes: Factory applied, ActivLife, HUD-FHA compliant (Fair Housing), structurally reinforced wall areas (as shown) for independent field application of bars and seat.

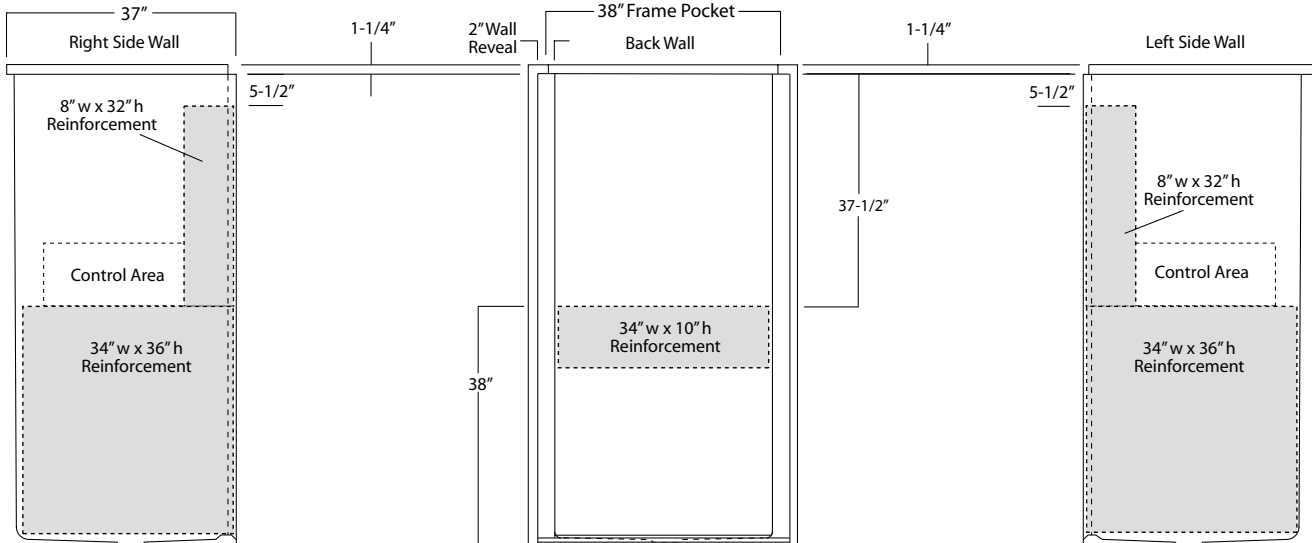
NOTE: "RS or LS" designates RH or LH reinforced seat wall.



**Package Order No.: FHV-DS (Fair Housing wall reinforcement)**

Package Includes: Factory applied, ActivLife, HUD-FHA compliant (Fair Housing), structurally reinforced wall areas (as shown) for independent field application of bars and seat.

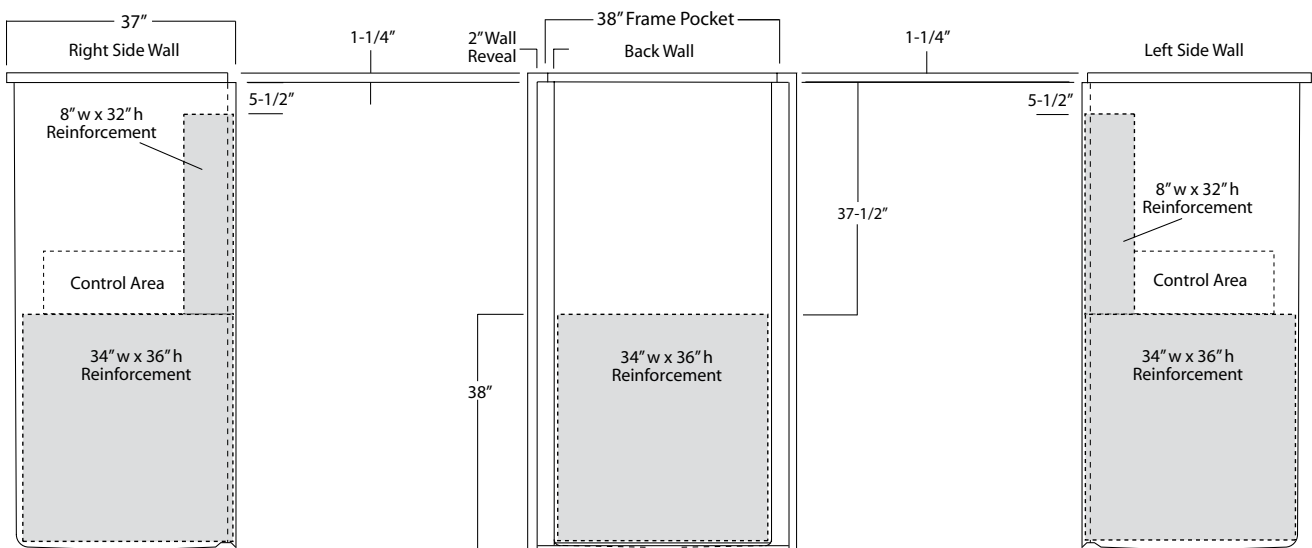
NOTE: Factory installed component packages available with listed reinforcement.



**Package Order No.: 3SM (3-side, mid-level wall reinforcement)**

Package Includes: Factory applied, ActivLife, 3-side, mid-level, structurally reinforced wall areas (as shown), exceeding 'Fair Housing' (HUD/FHA) requirements, for independent field application of bars and seat.

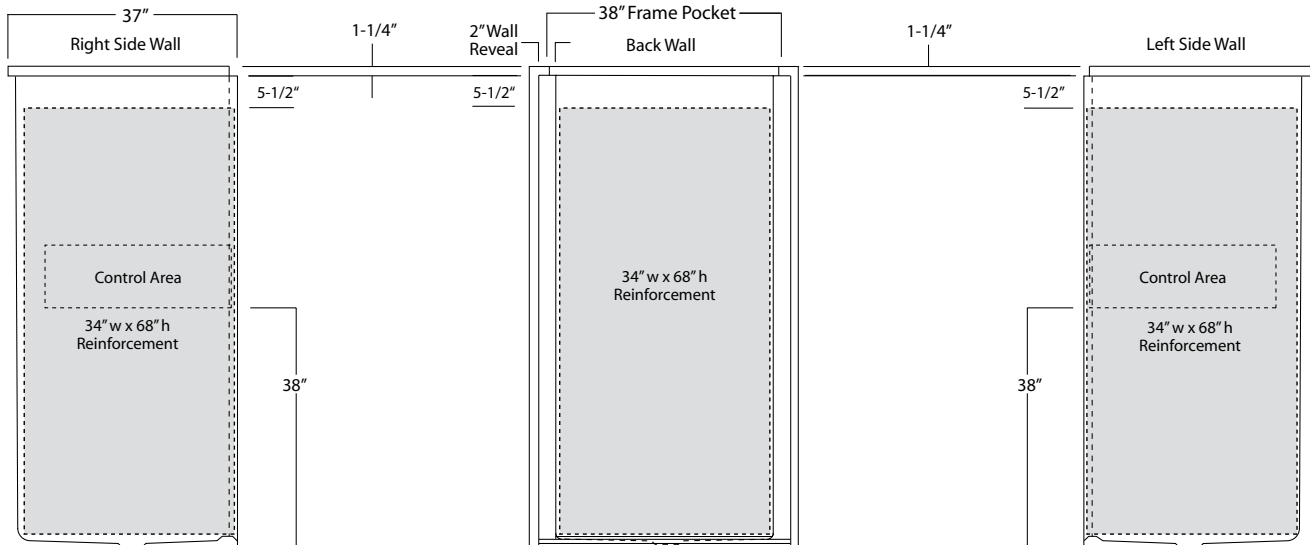
NOTE: Factory installed component packages available with listed reinforcement.



**Package Order No.: 3SF (3-side, full-wall reinforcement)**

Package Includes: Factory applied, ActivLife, 3-side, full-wrap, structurally reinforced wall areas (as shown), exceeding 'Fair Housing' (HUD/FHA) requirements, for the independent field application of bars and seat.

NOTE: Factory installed component packages available with listed reinforcement.



**Package Order No.: ICBAR-(R or L) (2-wall / single-bar only package)**

**ICBAR-(R or L) WHT (1-1/4" dia., white powder coat, 2-wall / single-bar only package)**

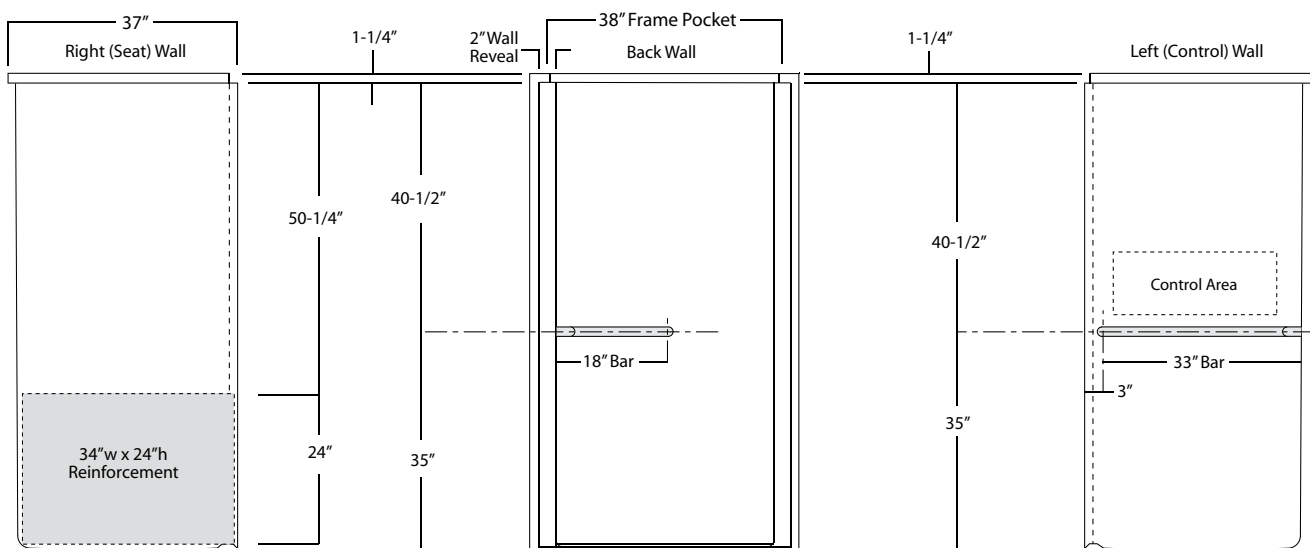
**ICBAR-(R or L) OFW (1-1/4" dia., off-white powder coat, 2-wall / single-bar only package)**

**ICBAR-(R or L) SNK (1-1/4" dia., satin nickel, 2-wall / single-bar only package)**

Package Includes: Factory installed, ActivLife, 2-wall bar package with horizontal corner bar across the control wall and back wall, basic reinforcement for components and reinforcement for a seat opposite the control wall.

NOTES: "R or L" designates RH or LH control wall.

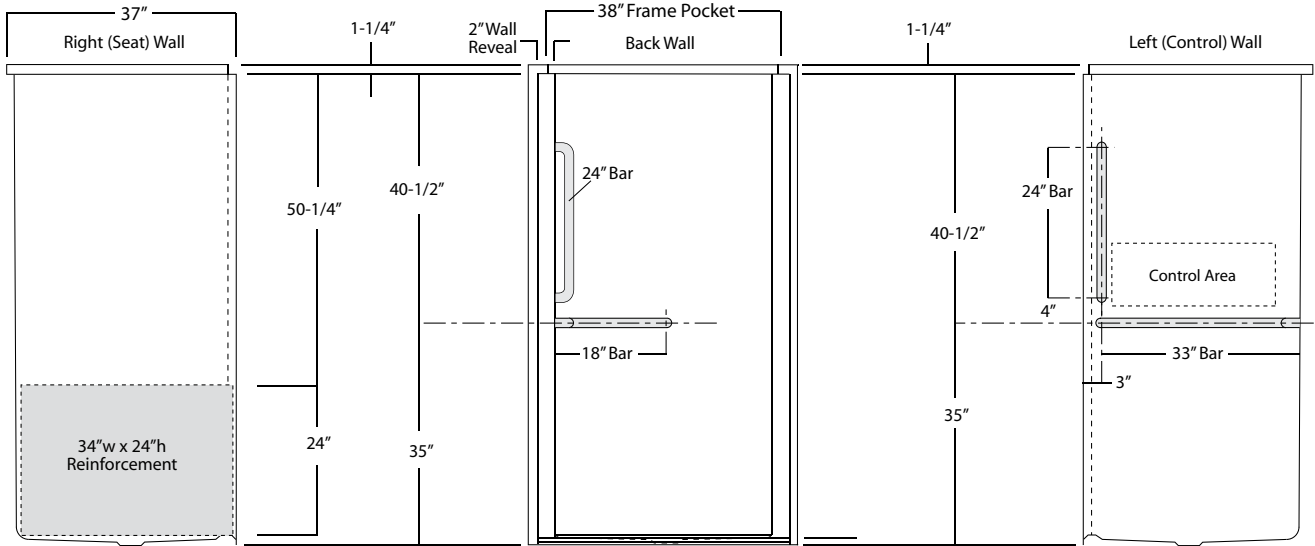
Enhanced reinforcement available with listed component package.



**Package Order No.:** 2BAR-(R or L) (2-wall / 3-bar only package)  
 2BAR-(R or L) WHT (1-1/4" dia., white powder coat, 2-wall / 2-bar only package)  
 2BAR-(R or L) OFW (1-1/4" dia., off-white powder coat, 2-wall / 2-bar only package)  
 2BAR-(R or L) SNK (1-1/4" dia., satin nickel, 2-wall / 2-bar only package)

Package Includes: Factory installed, ActivLife, 2-wall bar package with horizontal corner bar across the control wall and back wall, a single vertical bar on the control wall, basic reinforcement for components and reinforcement for a seat opposite the control wall.  
 NOTES: "R or L" designates RH or LH control wall.

Enhanced reinforcement available with listed component package.



**Package Order No.:** ADA10-(RS or LS) (folding seat - 2010 ADA Standards compliant pkg)

Package Includes: Factory installed folding seat, 1-1/2" dia. stainless steel horizontal corner bar across the control wall and back wall with basic reinforcement for components, and shower curtain rod in compliance with 2010 ADA requirements.

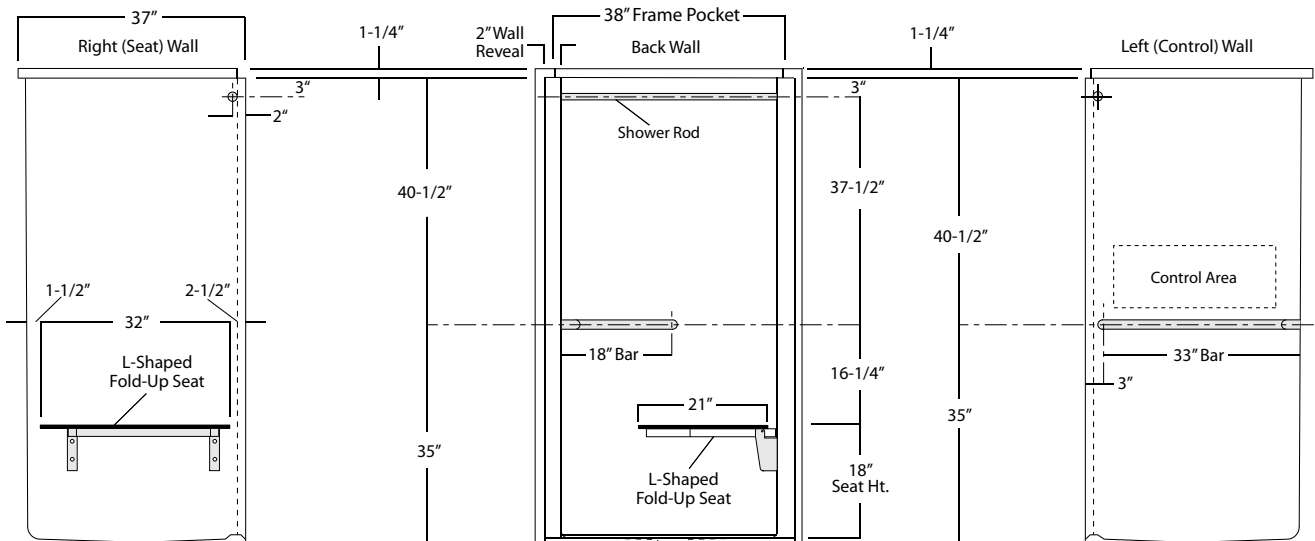
NOTES: ADA10 is a 2-wall bar package. Check installation site regulations for compliance requirements.

"RS or LS" designates seat wall.

Shower curtain rod may be deleted upon request without affecting compliance.

Enhanced reinforcement available with listed component package.

Optional, white, 150 denier fabric, bottom weighted shower curtain with integrated rings (#CRT-36).



**Package Order No.: ANS17-(RS or LS) (folding seat - ICC/ANSI A117.1-2017 Standards compliant pkg)**

Package Includes: Factory installed folding seat, 1-1/2" dia. stainless steel horizontal corner bar across the control wall and back wall, a single vertical bar on the control wall, basic reinforcement for components and shower curtain rod in compliance with ANSI A117.1-2017 requirements.

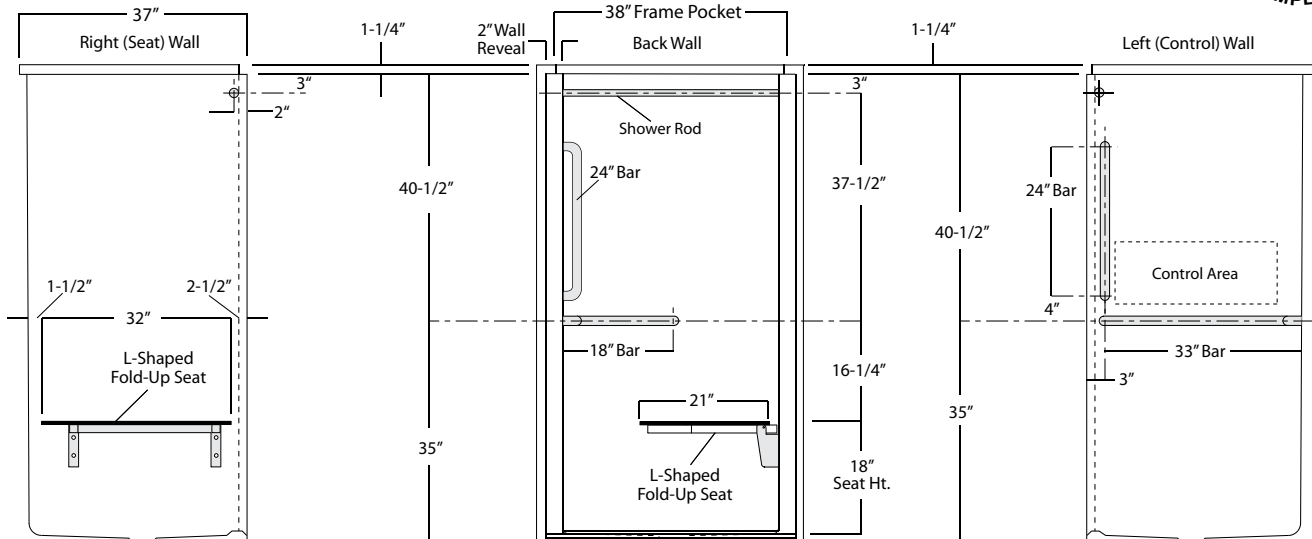
NOTES: ANS17 is a 2-wall bar package with vertical bar. Check installation site regulations for compliance requirements.

"RS or LS" designates seat wall.

Shower curtain rod may be deleted upon request without affecting compliance.

Enhanced reinforcement available with listed component package.

Optional, white, 150 denier fabric, bottom weighted shower curtain with integrated rings (#CRT-36).



Photographic images may include optional components and appear different than actual product.  
 Dimensions shown are maximum. Due to the nature of the materials involved, actual unit dimensions can vary (tolerances: +/-1/8 inch)  
 Oasis reserves the right to modify or discontinue product and/or associated equipment without prior written or verbal notification or obligation.