

# 123 Connect

## DROP-IN DRAIN INSTALLATION KIT



### DROP-IN DRAIN INSTALLATION KIT FOR YOUR FREESTANDING BATHTUB

## FEATURES

- **Quick, easy and clean restanding bathtub installation.**
- No access panel required.
- Allows for an installation as close to the wall as possible.
- Plate can be uninstalled if adjustments are needed.
- Fits with 1 ½" males, 1 ½" females or 1 ½" threaded bathtub drains.
- Reusable cap for more than one test air pressure, if necessary.
- Made in Canada.

---

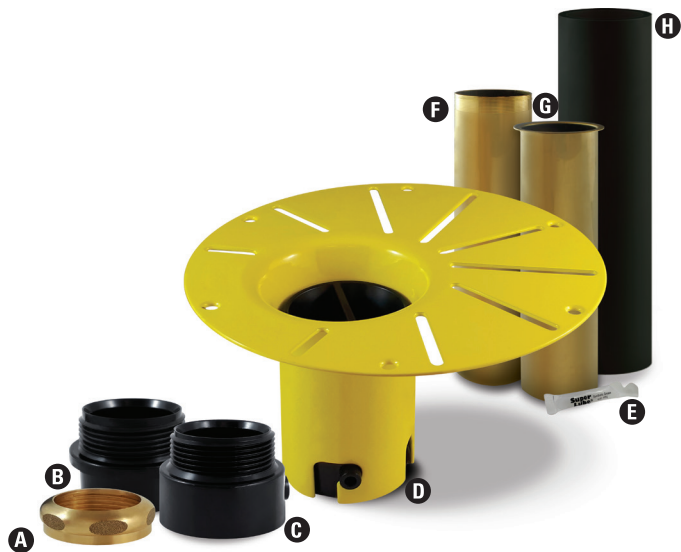
## INSTALLATION TIPS

- Use 5" hole saw to cut sub floor (not included). Cutting template included. Secure Deck Flange with 6 screws (not included).
- Do not cut the brass tailpiece as this may cause a leak.

# ABS COMPONENTS

## 123 CONNECT INSTALLATION KIT

- A. Nut
- B. 1 1/2" male adaptor
- C. 1 1/2" female adaptor
- D. Drop-in drain
- E. Grease
- F. Threaded brass tailpiece
- G. Brass tailpiece
- H. ABS pipe



**PRICE: \$299**

**62.6010.103.00\***

# PVC COMPONENTS

## 123 CONNECT INSTALLATION KIT

- A. Nut
- B. 1 1/2" male adaptor
- C. 1 1/2" female adaptor
- D. Drop-in drain
- E. Grease
- F. Threaded brass tailpiece
- G. Brass tailpiece
- H. PVC pipe



**PRICE: \$299**

**62.6010.104.00\***

**\* Must be ordered in multiples of 8 units per code.**

