

**Towel Ring**  
**2540-1410**

**Features**

- Solid brass construction
- Double-post design with rigid, outwardly curved bar
- Complements Metro product series

**Codes / Standards Compliance**

Meets or exceeds the following at date of manufacture:

- All applicable US Federal and State material regulations



**Colors / Finishes**

- 10B: Oil Rubbed Bronze
- 15: Polished Nickel
- 15S: Satin Nickel - PVD
- 26: Polished Chrome
- Other: Refer to the Newport Brass catalog for additional color/finish options.

**Specified Model**

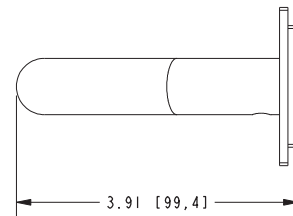
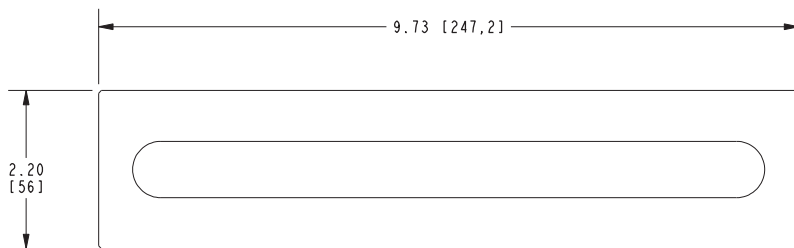
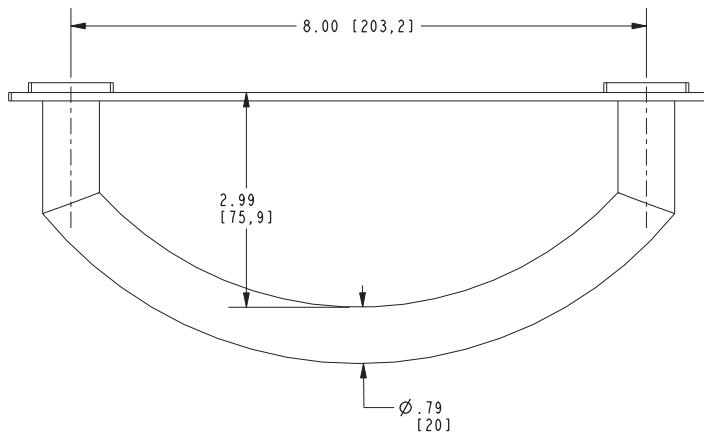
Model	Description	Colors   Finishes				
2540-1410	Open Towel Ring	<input type="checkbox"/> 10B	<input type="checkbox"/> 15	<input type="checkbox"/> 15S	<input type="checkbox"/> 26	<input type="checkbox"/> Other

**Product Specification** Add "Color / Finish" suffix to Model number, below.

The Towel Ring shall be made of solid brass construction and incorporate a double-post design with rigid, outwardly curved bar. Towel Ring shall complement Newport Brass Metro product series. Towel Ring shall be Newport Brass Model 2540-1410/\_\_\_\_\_.

# 2540-1410

PRODUCT DIMENSIONS *(Units are in inches)*



## Metro Towel Ring 2540-1410