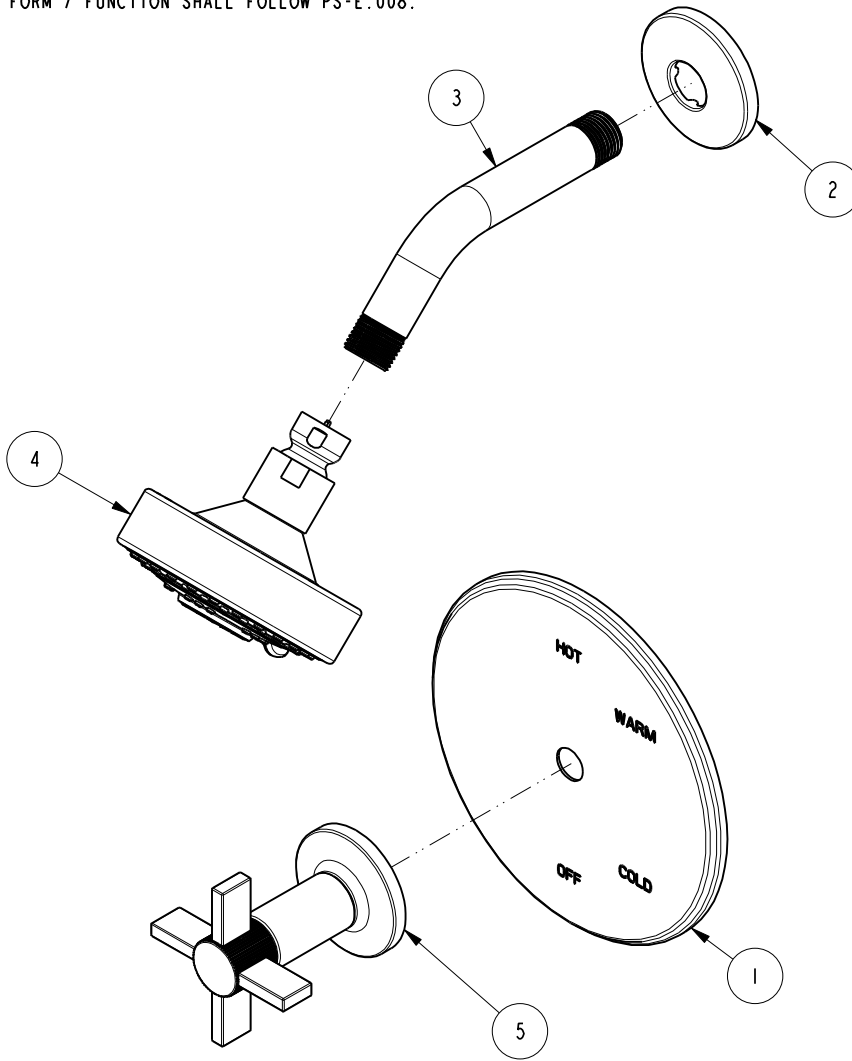


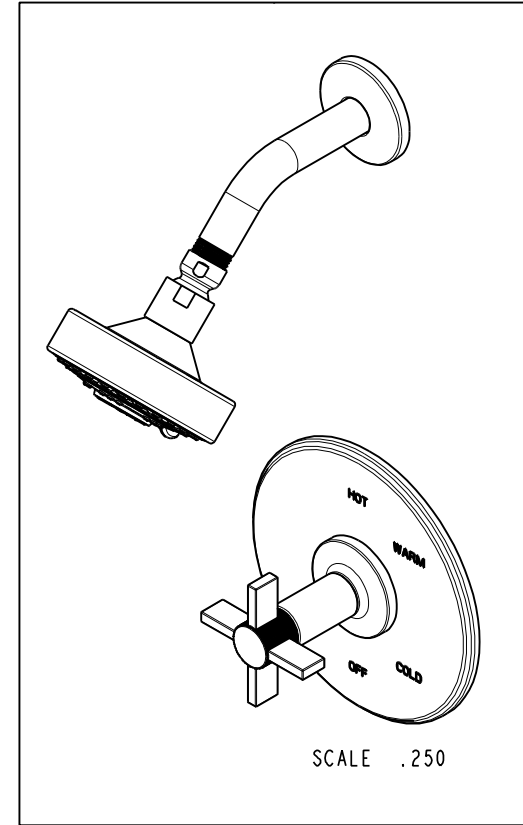
NOTES:

(NI) 1. FIT / FORM / FUNCTION SHALL FOLLOW PS-E.008.



BILL OF MATERIAL (CURRENT LEVEL)

| ITEM | PT/ASSY | DESCRIPTION                | TYPE     | QTY. |
|------|---------|----------------------------|----------|------|
| 1    | 2-439   | COVERPLATE BP W/O DIVERTER | ASSEMBLY | 1    |
| 2    | 206     | SHOWER ARM FLANGE          | PART     | 1    |
| 3    | 200     | SHOWER ARM 6" BRASS        | PART     | 1    |
| 4    | 2155    | SHOWER HEAD, CONTEMP       | ASSEMBLY | 1    |
| 5    | 3-645   | CROSS HANDLE W/ESC.        | ASSEMBLY | 1    |



COPYRIGHT 2005 BRASSTECH, INC. THESE DRAWINGS AND THE DESIGNS DEPICTED HEREIN ARE THE PROPRIETARY PROPERTY OF BRASSTECH. ANY USE OR REPRODUCTION IS SUBJECT TO THE EXPRESS APPROVAL OF BRASSTECH. UNAUTHORIZED USE IS STRICTLY PROHIBITED. ALL RIGHTS RESERVED.

|                   |                                  |             |         |
|-------------------|----------------------------------|-------------|---------|
| TESTING           | -                                | -           | -       |
| ASSEMBLY          | -                                | -           | -       |
| PLATING           | -                                | -           | -       |
| POLISHING         | -                                | NEXT ASSY   | USED ON |
| MACHINING         | -                                | APPLICATION |         |
| TOOLING FIXTURE # | REMOVE ALL BURRS AND SHARP EDGES |             |         |

UNITS ARE: INCHES [MM]  
TOLERANCES ARE:  
FRACTIONS DECIMALS ANGLES  
±1/16" .X ±.1 [2,5] ±1°  
.XX ±.06 [1,5]

(X.XXX) DENOTES CRITICAL DIMS.  
ALL THREADS ARE CRITICAL

|          |        |          |
|----------|--------|----------|
| DRAWN    | JINSON | 03/13/19 |
| CHECKED  | J.M.   | 03/13/19 |
| APPROVED | J.M    | 03/13/19 |

**BRASSTECH**  
INCORPORATED

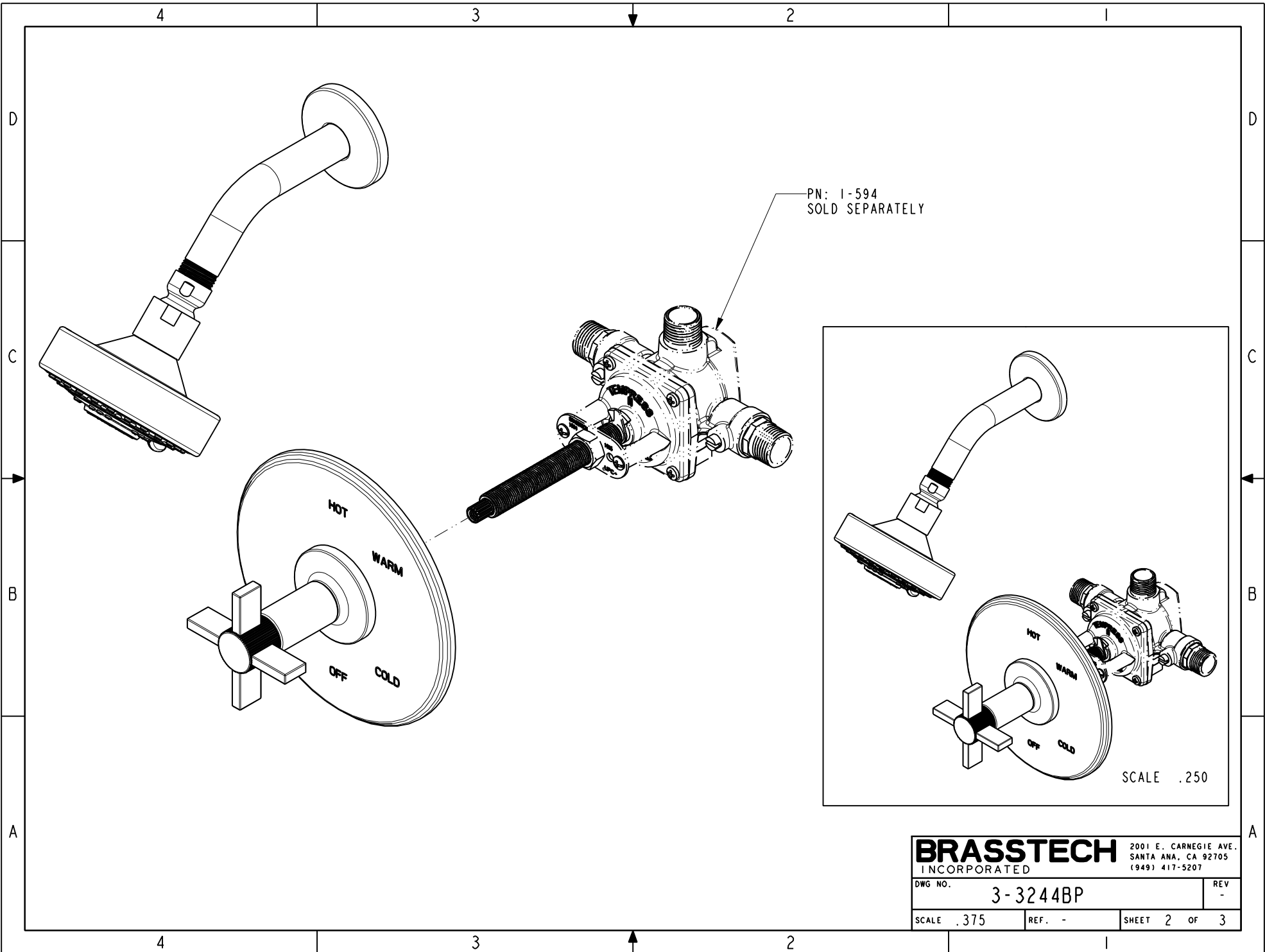
2001 CARNEGIE AVE.  
SANTA ANA, CA 92705  
(949) 417-5207

BP SHOWER TRIM SET

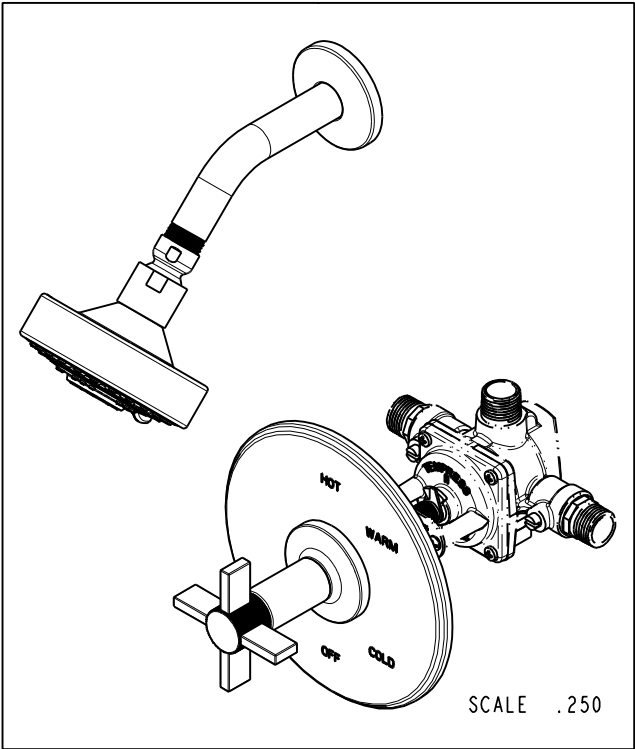
DWG NO. 3-3244BP

SCALE .325 REF. - SHEET 1 OF 3

| ZONE | REV | DESCRIPTION | DATE     | APPROVED |
|------|-----|-------------|----------|----------|
| -    | -   | EN-3478     | 03/13/19 | J.M      |



PN: 1-594  
SOLD SEPARATELY

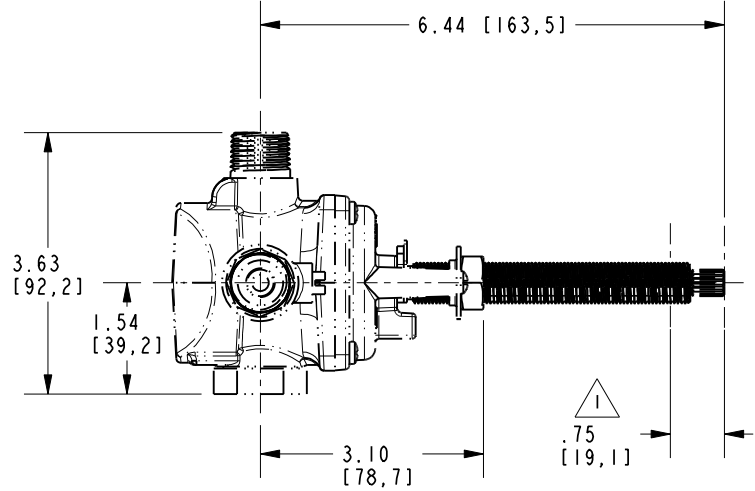
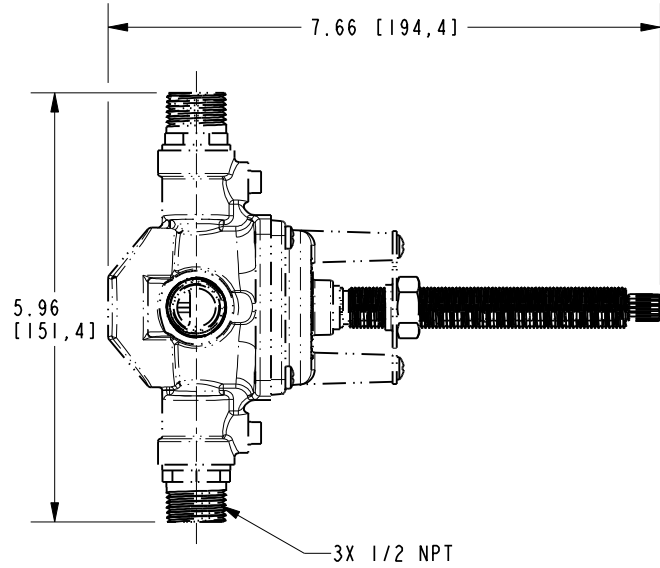
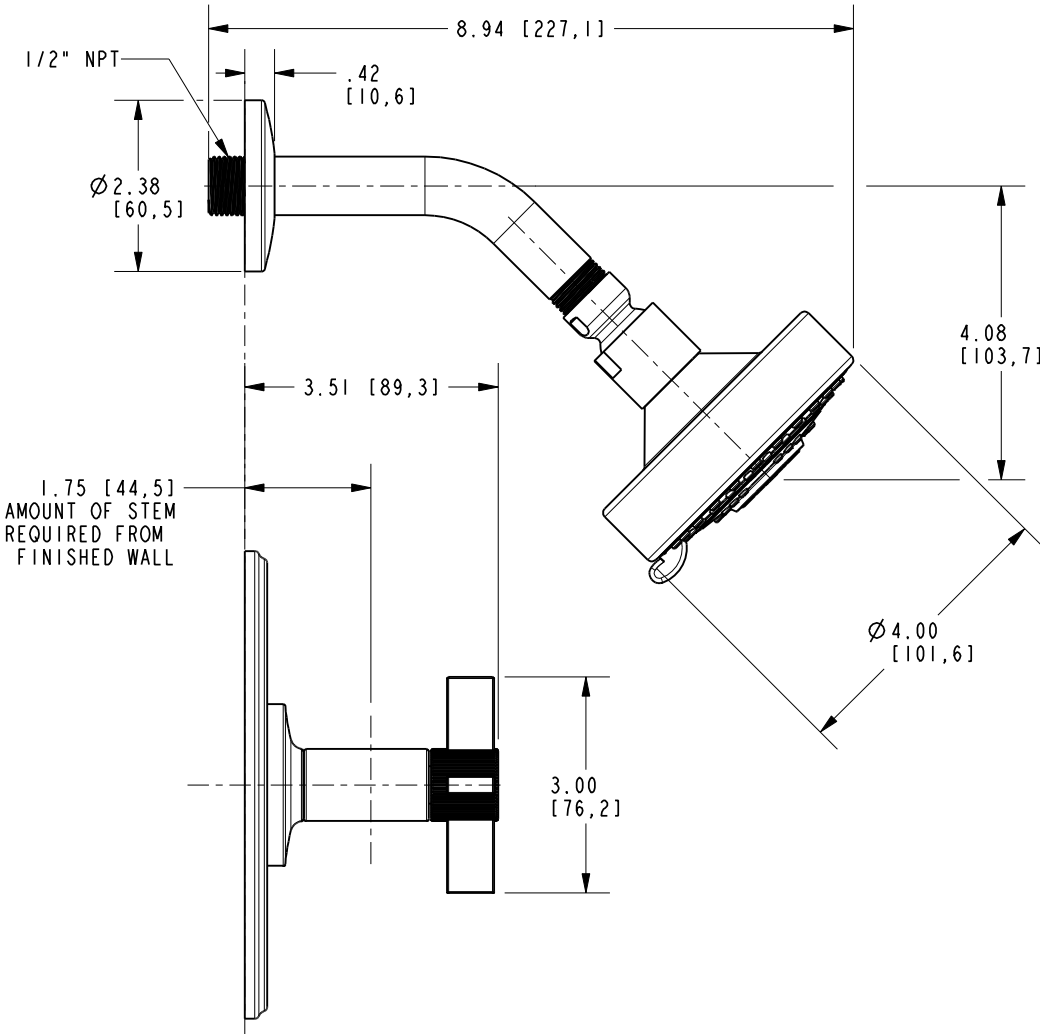


|                  |          |  |      |
|------------------|----------|--|------|
| <b>BRASSTECH</b> |          | 2001 E. CARNEGIE AVE.<br>SANTA ANA, CA 92705<br>(949) 417-5207 |      |
| INCORPORATED     |          |  |      |
| DWG NO.          | 3-3244BP |  | REV  |
| SCALE .375       | REF. -   | SHEET 2  | OF 3 |

NOTE:

1. CUT ALL THREAD 0.75" SHORTER THAN STEM.

D  
C  
B  
A



|                  |          |  |
|------------------|----------|--|
| <b>BRASSTECH</b> |          | 2001 E. CARNEGIE AVE.<br>SANTA ANA, CA 92705<br>(949) 417-5207 |
| DWG NO.          | 3-3244BP | REV -  |
| SCALE .375       | REF. -   | SHEET 3 OF 3   |

4 3 2 1