

# NEWPORT BRASS®

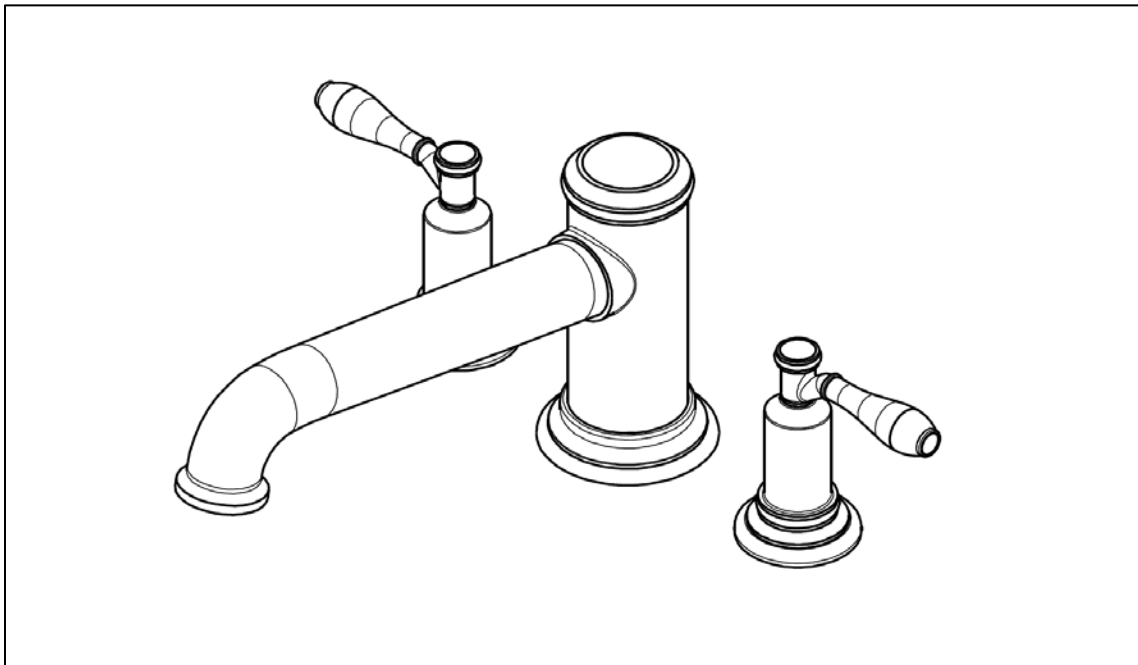
*Flawless Beauty. From Faucet to Finish.™*

## Installation Instructions

ROMAN TUB 2 VALVE AND TRIM

Valve Body No. 1-636

Trim Kit for Model No's: 3-2556



**Congratulations on the purchase of this Newport Brass product, an excellent choice, that will give you years of quality service and enhance the look and style of your home.**

# Rough In Valve Installation

## Recommended Installation by a Professional Plumbing Contractor

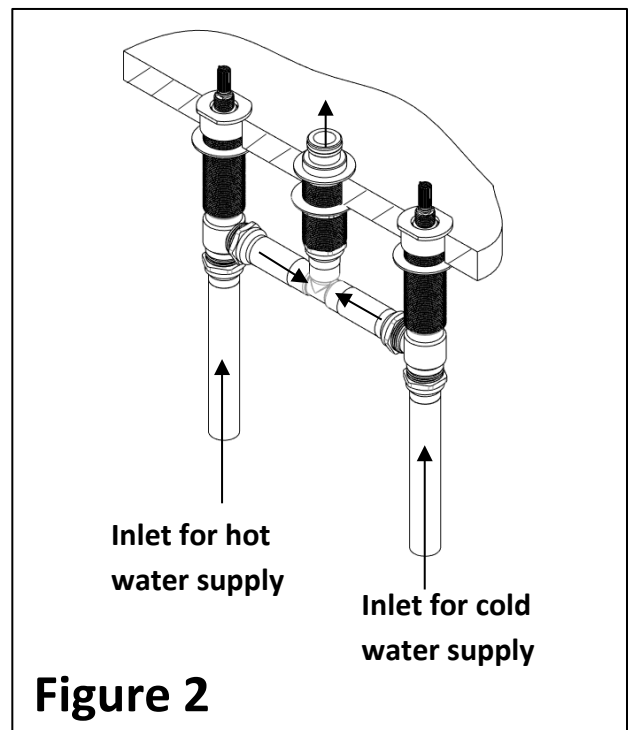
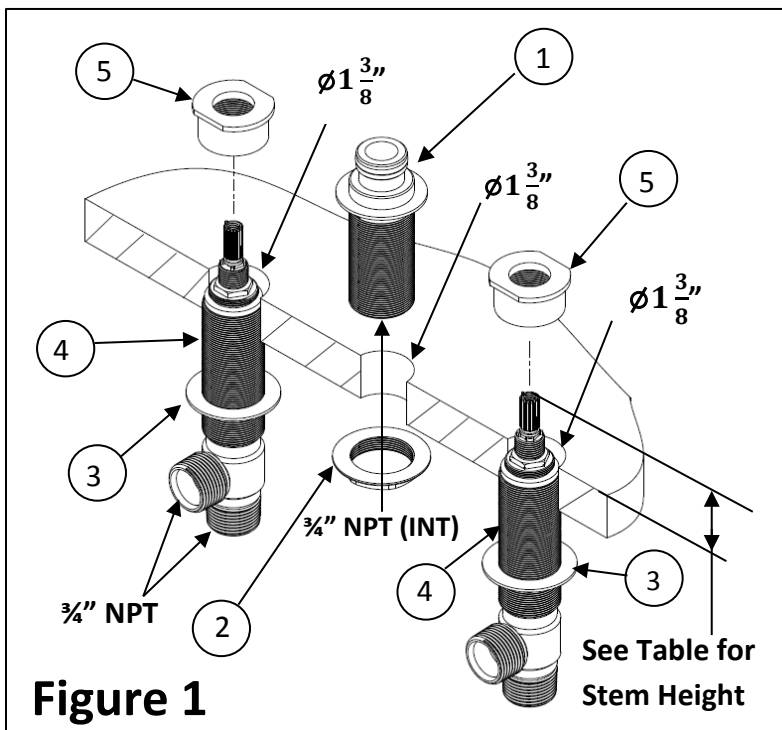
**Note:** Use plumbers tape or equivalent to seal all threaded joints. Plumb with 3/4" copper pipe is recommended.

**Warning:** To prevent severe damage to valve body, any solder/braze process must be performed a min. of 4" from ports.

1. Install the SPOUT QUICK CONNECT NIPPLE (1) through appropriate hole of mounting surface, and secure with WASHER NUT (2). **See Figure 1.**
2. Place lower WASHER NUT (3) on VALVE BODY (4). Insert VALVE BODY (4), (blue cold & red hot), through hole from underside of deck. **See Figure 1.**
3. Use INVERTED FLANGE NUT (5) to ensure adequate stem height per **Table 1**, install Tighten lower WASHER NUT (3) to secure VALVE BODY (4). **See Figure 1.**

Table 1: Trim Installation	
<b>SERIES</b>	3-2256
<b>STEM HEIGHT</b>	1-3/8"

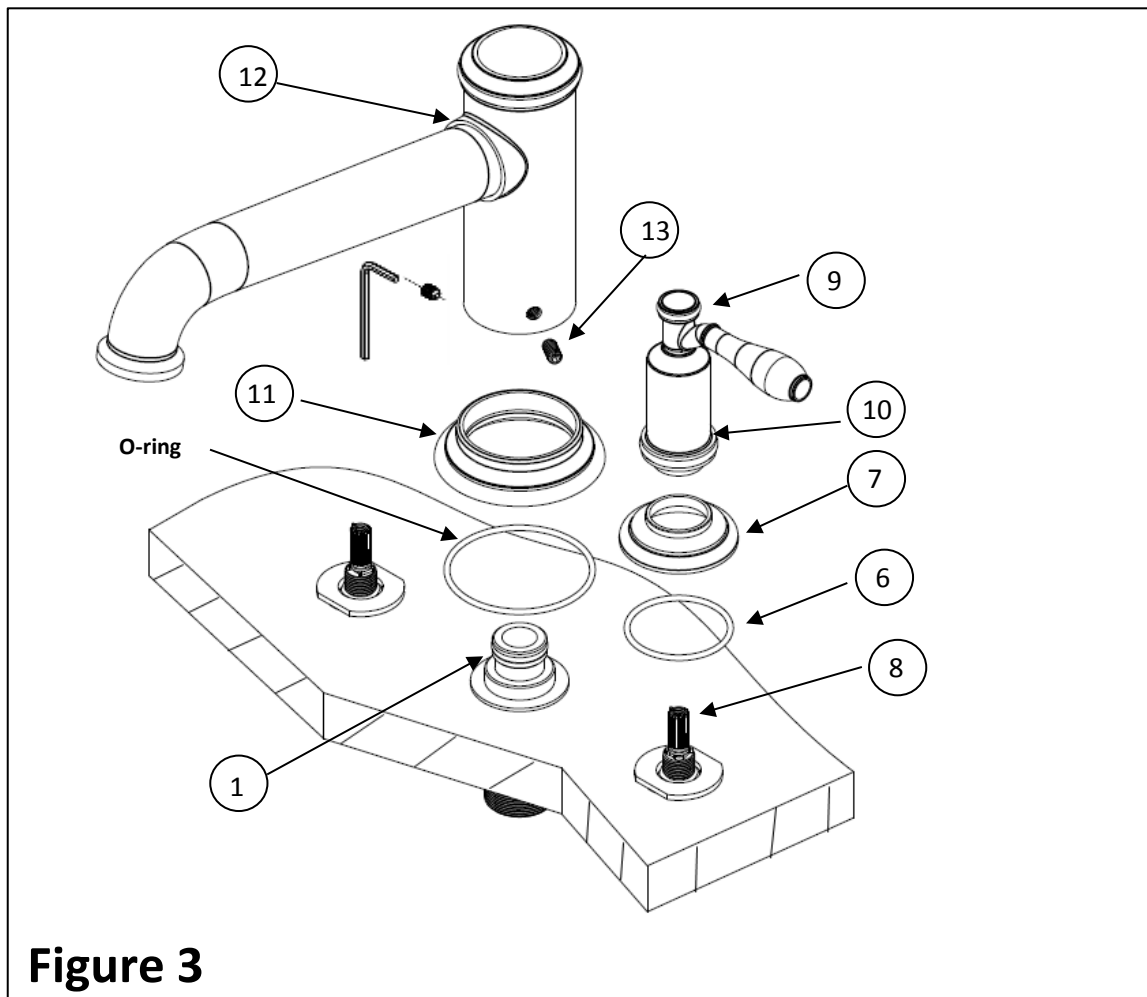
4. Attach hot/cold supply lines to appropriate VALVE BODY (4). **See Figure 2.**
5. Connect outlet from each VALVE BODY (4) to SPOUT QUICK CONNECT NIPPLE (1) utilizing a 3/4" copper pipe, as shown in **Figure 2.**



## Trim Installation

**Note:** If cartridge was removed for any reason, it **MUST** be re-tighten to factory torque of 14-16 ft-lbs.

1. Place O-RING (6) and ESCUTCHEON (7) over VALVE STEM (8). Secure handle into place by first engaging the VALVE STEM (8), then position and holding the handle LEVER (9) while rotating the BONNET (10) and ESCUTCHEON (7). Any adjustments for handle rotational alignment must be made to the valve body - not to the cartridge. (Note: Allow minimum spacing between handles and escutcheon/bonnet to prevent damage to the surface finish.) Secure handles into place with screw. **See Figure 3.**
2. Slide SPOUT BASE RING (11) \*\* onto spout assembly, exposing the set screws. Align and press assembly onto QUICK CONNECT NIPPLE (1). Make sure SPOUT (12) is flush with deck and secure into place with 3 SET SCREWS (13). **See Figure 3.**
3. Turn on water supply, check for leaks, functions, and make any final adjustments required.



**Figure 3**