

TAO 3666

65 3/4" x 35 3/4" x 22 3/8"



## GENERAL OPTIONS

**Ultim-O overflow and waste included:** Chrome

**Acrylic Colors:** White

Standard

Biscuit\* and Bone\* (Allow 3 weeks delivery)

**Others\*:** (Allow 6 to 8 weeks delivery)

**Chromotherapy 1 light** (Specify trim color) 17.99999.0000.00

**Chromotherapy 2 lights** (Specify trim color) 17.99999.0001.00

**Chromotherapy 4 lights** (Specify trim color) 17.99999.0002.00

**Handle** (max. 4) (submit drawing with order) 95.7077.106.XX

**Gel black neck pillow** (12"x 4 1/4 x 1 1/4") 18.6000.100.20

**Rayola\*\*** (Specify control color)

Available for bathtub without system only

## WHIRLPOOL OPTIONS

**A bathtub fitted with back jets may cause the pump to protrude by +/- 3" from the overall dimension.**

**Pump is installed on the left side of the drain (non-negotiable)**

**Whirlpool Jet finish:** Chrome, White, Biscuit, Bone

Standard

**110v Inline Heater**

## MASS-AIR/ACTIV-AIR OPTIONS

**Mass-Air Jet finish:** White/Chrome

Standard

Biscuit/Chrome

Bone/Chrome

**Others:** Chrome/Chrome

**Activ-Air Jet finish:** Chrome, White, Biscuit, Bone

Standard

**Blower Hose extension 72"** 95.5013.167.00

**Blower Hose extension 96"** 95.5013.168.00

**144" Extension cord** 95.3012.101.00

**An extension cord and blower hose extension are necessary when the blower is located more than 2' from the electronic control, not available on whirlpool combos.**

\*Customized products, non cancellable, non returnable.

\*\*Not available with a neck pillow.

## PRODUCT DESCRIPTION:

Adjustable feet

Contemporary style

Gloss finish resistant to stains and discoloration

Acrylic thermoformed and reinforced with fiberglass

Available with 2" flange only

5 days

## WATER CAPACITY:

81 gallons

## IMMERSION:

17 1/8 po

## BOX SIZE:

68" x 37" x 25"

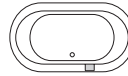
## NET WEIGHT:

62 lbs

## GROSS WEIGHT:

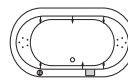
79 lbs

Includes drain and Ultim-O overflow assembly.



**Bathtub only**

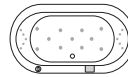
**TAO3666**



**Whirlpool**

**TAO3666T**

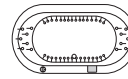
Included: 6 turbo jets, 10 micro-rotating back jets, 13 A pump, two diverter valves and electronic control.



**Mass-Air**

**TAO3666M**

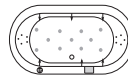
Included: 21 (11-10) injectors, Optima blower 750W (1 1/2 h.p.) with 300W heating element and backlit electronic control.



**Activ-Air**

**TAO3666A**

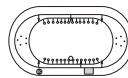
Included: 46 micro-jets, Optima blower 750W (1 1/2 h.p.) with 300W heating element and backlit electronic control.



**Mass-Air/Whirlpool Combo**

**TAO3666C**

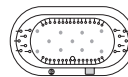
Included: 6 turbo jets, 10 micro-rotating back jets, 11 Mass-Air injectors, 13 A pump, Optima blower 750W (1 1/2 h.p.) with 300W heating element, two diverter valves and backlit electronic control.



**Activ-Air/Whirlpool Combo**

**TAO3666CA**

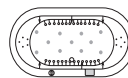
Included: 6 turbo jets, 10 micro-rotating back jets, 30 Activ-Air micro-jets, 13 A. pump, Optima blower 750W (1 1/2 h.p.) with 300W heating element, two diverter valves and backlit electronic control.



**Mass-Air/Activ-Air Combo**

**TAO3666CMA**

Included: 46 Activ-Air micro-jets, 11 Mass-Air injectors, two Optima blowers 750W (1 1/2 h.p.) with 300W heating element and backlit electronic control.



**Activ-Air/Mass-Air/Whirlpool Combo**

**TAO3666TAM**

Included: 6 turbo jets, 10 micro-rotating back jets, 30 Activ-Air micro-jets, 11 Mass-Air injectors, 13 A pump, two Optima blowers 750W (1 1/2 h.p.) with 300W heating element, two diverter valves and backlit electronic control.



Intertek

## COMPLIANCE ATTESTATION

Standard bathtubs

CAN / CSA.B45.5

Hydromassage Standards

CAN / CSA.B45.10 / CSA.C22.2 / UL-1795



## Certification ECORESPONSIBLE

First manufacturer of bathroom products in North America to be certified ecoresponsible.



**Produits Neptune**

6835, Picard street, Saint-Hyacinthe (Quebec) J2S 1H3  
Phone: (450) 773-7058 - produitsneptune.com

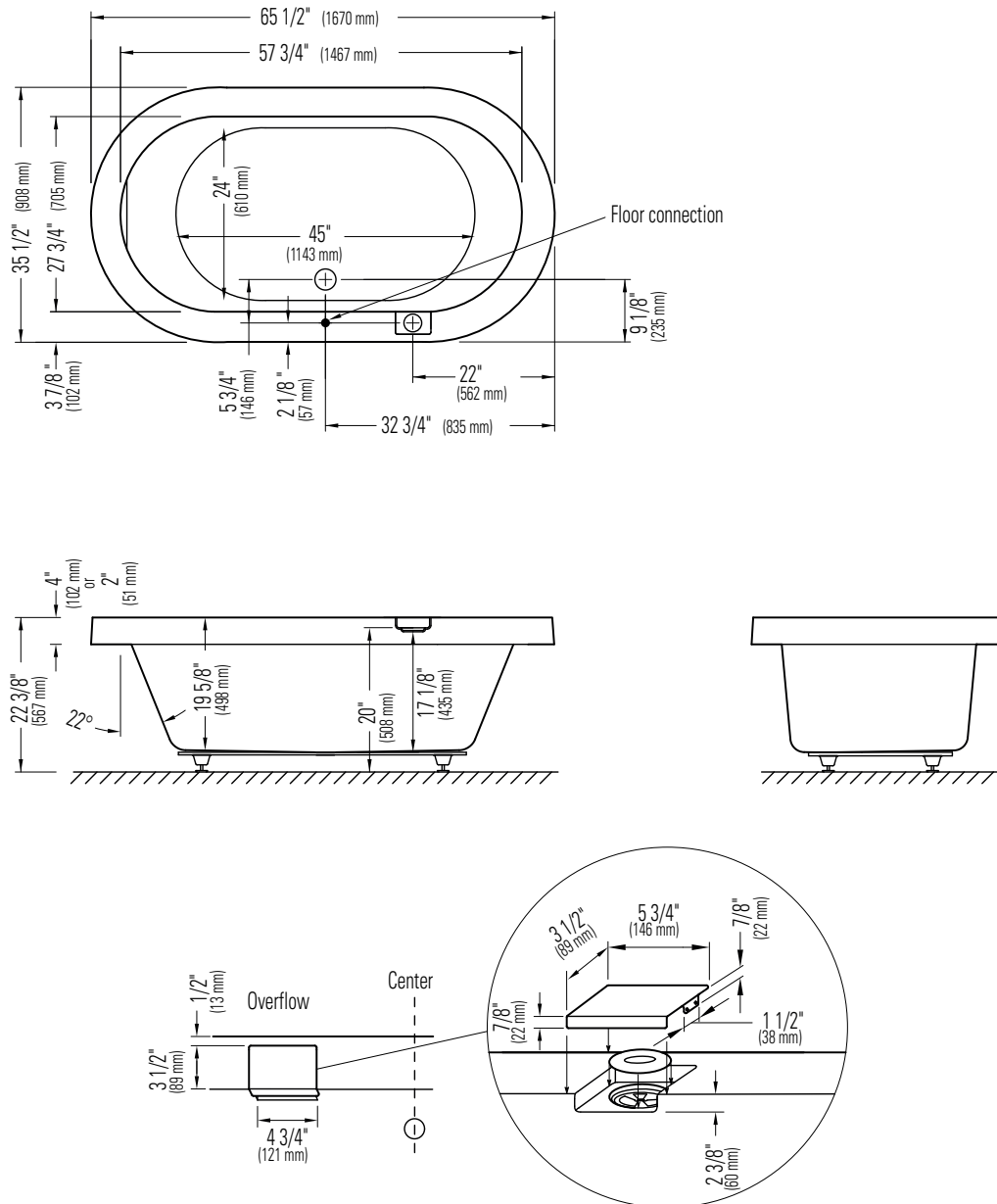
REV: 01-21



Produce Neptune

## TAO 3666

Bathtub



\*A bathtub fitted with back jets can cause the pump to protrude by approximately 3" from the overall dimension.

\*\*All dimensions are approximate and subject to change without notice.  
Please refer to the installation guide before beginning the installation