

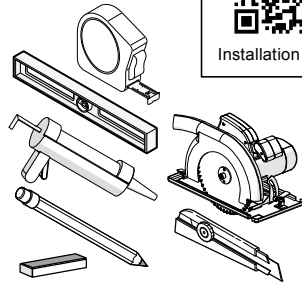
# INSTALLATION GUIDE

**PLEASE READ ALL STEPS BEFORE STARTING INSTALLATION!**

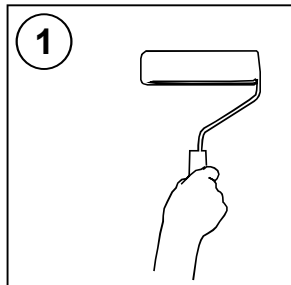
## TOOLS REQUIRED:

- Level
- Measuring tape
- Pencil
- Utility knife or circular saw (60 teeth or more)
- Shims
- Silicone gun
- 100% silicone adhesive
- 100% silicone sealant (if installed in a shower)

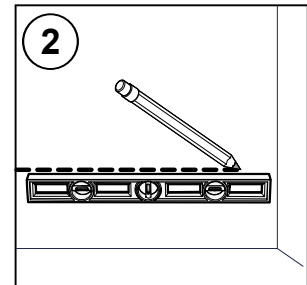
\*Optional edge trims available



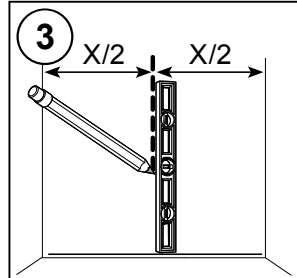
Installation video



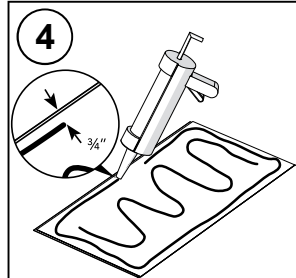
1 Make sure the surface is clean and without grease. We recommend to apply primer or a waterproof finish.



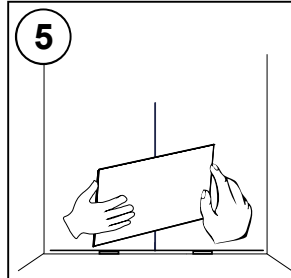
2 Find the highest point of the base. Use a laser if you have one. Place a 1/8" shim and a tile at this place. Mark the height of the tile. Trace an horizontal line with the level at this height.



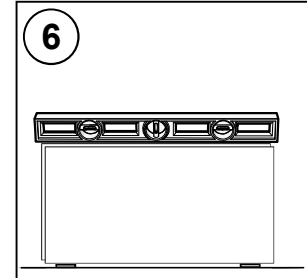
3 To have a symmetrical layout, measure the back wall and trace a leveled line on the middle of it. Align the tiles to it.



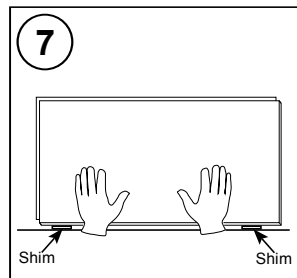
4 Apply a silicone adhesive line over the tile. Leave at least 3/4" gap to the edges.



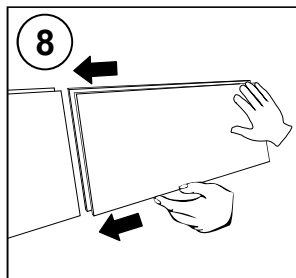
5 Install from the floor, starting from the center (first tile centered). The first row over 1/8" shims.



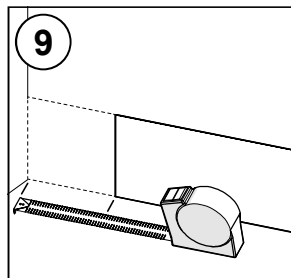
6 Use a spirit level to verify that the panel is correctly aligned.



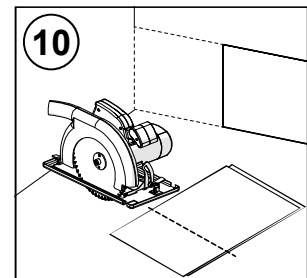
7 Press firmly on the tile to make sure it adheres to the wall surface.



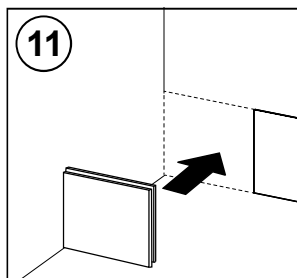
8 Place the following tile by connecting with the first one.



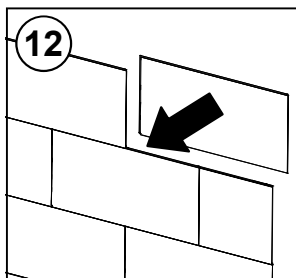
9 Measure the excess of tile to cut on the extremities.



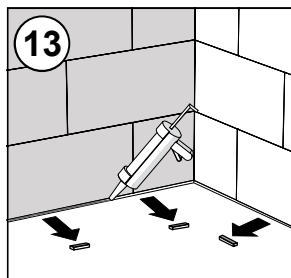
10 Cut the excess of the tile with a utility knife or a circular saw with a 60 teeth blade or more.



11 Glue the cut tile.

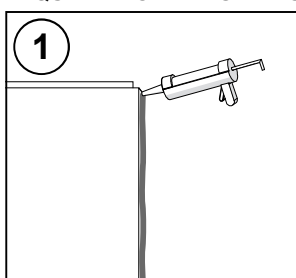


12 Repeat with the next rows of tiles.

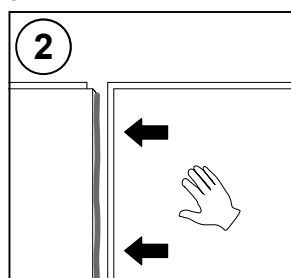


13 Once all the tiles have been installed wait 4 hours. Remove shims and apply a bead of silicone to fill the gap between the tiles, the floor and in the corners.

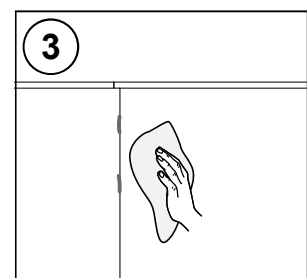
## REQUIRED FOR TILES IN A SHOWER



1 Apply sealant in the joints to avoid water from infiltrating through the tiles.



2 Join the tiles.



3 Remove the extra sealant. Wait 24 hours before using the shower.