

NIBCO® Press System® Bronze Globe Valves

Screw-in Bonnet • Integral Seat • Renewable Seat and Disc



200 PSI/13.8 Bar Non-Shock Cold Working Pressure
250°F Maximum Operating Temperature

CONFORMS TO MSS SP-80

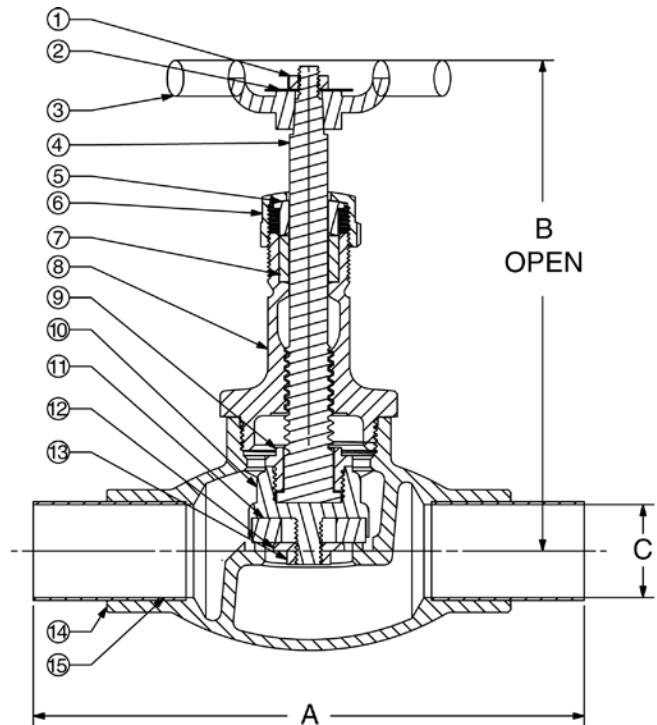
MATERIAL LIST

PART	SPECIFICATION
1. Handwheel Nut	300 Series Stainless Steel
2. Identification Plate	Aluminum
3. Handwheel	Malleable Iron ASTM A 47
4. Stem	Silicon Bronze ASTM B 371 Alloy C69430
5. Pack Gland	Brass ASTM B 16 Alloy C36000
6. Pack Nut	Brass ASTM B 16 Alloy C36000
7. Packing	Aramid Fibers with Graphite
8. Bonnet	Bronze ASTM B 62 Alloy C83600
9. Disc Holder Nut	Bronze ASTM B 62 Alloy C83600
10. Disc Holder	Bronze ASTM B 62 Alloy C83600
11. Disc	PTFE
12. Disc Washer	304 Stainless Steel
13. Disc Nut	Bronze ASTM B 98 Alloy C65100
14. Body Assembly	Bronze ASTM B62 Alloy C83600
15. Stub Out (2)	Type "L" Copper Tube



PS211-Y

Press x Press
Male End



PS211-Y
P x P

DIMENSIONS—WEIGHTS

Size	Dimensions						Weight		
	A		B		C		Lbs.	Kg.	
In.	mm.	In.	mm.	In.	mm.	In.	mm.		
*½†	15	6.69	170	3.38	86	.50	13	1.08	.49
¾	20	7.75	197	4.88	124	.75	19	2.03	.92
1	25	8.63	219	5.69	145	1.00	25	3.20	1.45
1¼	32	9.00	229	6.13	156	1.25	32	4.01	1.82
1½	40	9.74	247	7.38	187	1.50	38	6.31	2.86
2	50	11.12	282	7.94	202	2.00	51	9.92	4.50

† No packing gland, packing only in this size.

* Stem and disc (or disc holder) are integral.

NIBCO® Press System® globe valves are designed to meet MSS SP-80 with the exception of the end connection. Male and female press-to-connect ends are new technology not yet covered in the current edition of this specification.