

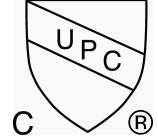


## H-86x7 Pro-Pal Multi-Port Tee w/ Drain

### H-86x7W Series

### Pro-Pal Multi-Port Tee w/ Drain

Forged DZR Brass Tee  
w/ 3 Branch Connections, Hi-Flow Hose Drain  
& Adjustable Packing Gland



### Certifications

Certified to NSF/ANSI 61 & 372  
NSF/ANSI 14, CSA B137.5

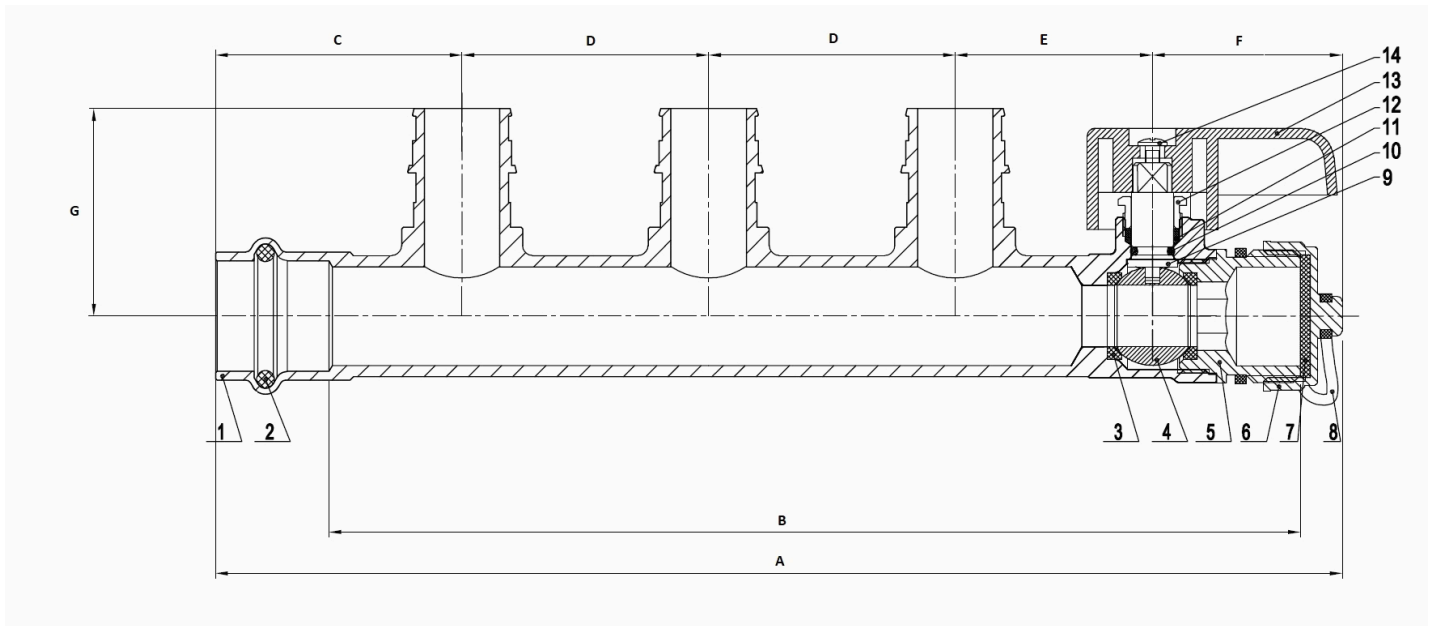


	Size (in)	Item#	Max Temp	Pressure Rating	Weight (lbs)	Carton Qty	Case Qty
<b>Press Run x F1807 PEX x Hose</b>	3/4"	H-86173W	250°F Max	250 PSI CWP	1.08	4	24
	3/4" x 1/2" x 3/4"	H-86173W-R	250°F Max	250 PSI CWP	1.10	4	24
	1" x 3/4" x 3/4"	H-86174W-R	250°F Max	250 PSI CWP	1.32	4	24
<b>Press Run x F1960 PEX x Hose</b>	3/4"	H-86373W	250°F Max	250 PSI CWP	1.14	4	24
	3/4" x 1/2" x 3/4"	H-86373W-R	250°F Max	250 PSI CWP	1.12	4	24
	1" x 3/4" x 3/4"	H-86374W-R	250°F Max	250 PSI CWP	1.31	4	24



	Size (in)	Item#	A	B	C	D	E	F	G
<b>Press Run x F1807 PEX x Hose</b>	3/4"	H-86173W	9.6	8.7	1.97	1.97	2.1	1.52	1.34
	3/4" x 1/2" x 3/4"	H-86173W-R	9.6	8.7	1.97	1.97	2.1	1.52	1.34
	1" x 3/4" x 3/4"	H-86174W-R	9.66	8.76	2.05	1.97	2.1	1.52	1.46
<b>Press Run x F1960 PEX x Hose</b>	3/4"	H-86373W	9	7.76	1.97	1.97	1.57	1.52	1.65
	3/4" x 1/2" x 3/4"	H-86373W-R	9	7.76	1.97	1.97	1.57	1.52	1.42
	1" x 3/4" x 3/4"	H-86374W-R	9.07	7.83	2.05	1.97	1.57	1.52	1.77

NO.	DESCRIPTION	MATERIAL
1	Body	Lead-Free DZR Brass
2	O-ring	EPDM
3	Seat	PTFE
4	Ball	Brass HCP
5	Cap	Lead-Free DZR Brass
6	Hose Cap	Brass
7	Cap Gasket	EPDM
8	Strap	NBR
9	Stem	Brass
10	O-ring	EPDM
11	Packing	PTFE
12	Packing Gland	Brass
13	Handle	Aluminum
14	Screw	Stainless Steel



Specifications: Threaded ends comply with ANSI B1.20.1. Designed for use with water, oil, glycol mix in residential or commercial plumbing and heating systems. This valve is actuated by a blowout proof stem. Features an adjustable packing gland stem seal design.

