

Class 300 Carbon Steel Flanged Ball Valves

Unibody Design • Blowout-Proof Stem • 316 SS Trim • Mounting Pad • Fire Safe • Vented Ball

740 PSI/51 bar non-shock cold working pressure*

CONFORMS TO ASME/ANSI B16.34, B16.5, MSS SP 72,
API 607 FOURTH EDITION, API 608, API 598,
MSS SP 25

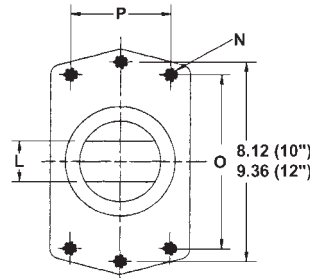
MATERIAL LIST

| PART | SPECIFICATION |
|------------------------------------|--------------------------------------|
| 1. ¹ Body and End Piece | Carbon Steel ASTM A 216 Type WCB |
| 2. ¹ Ball (Vented) | Stainless Steel ASTM A 351 Type CF8M |
| 3. Stem | Stainless Steel ASTM A 276 Type 316 |
| 4. Seat | Reinforced PTFE |
| 5. Packing Set | Graphite and Braided Graphite |
| 6. Pack Gland | Stainless Steel 304 SS |
| 7. Pack Gland Nut | Carbon Steel Plated |
| 8. O-Ring | Fluorocarbon Encapsulated |
| 9. Gasket | 304 SS/Graphite Spiral Wound |

¹ Cast specifications shown. Smaller sizes may be manufactured from equivalent bar stock specifications.

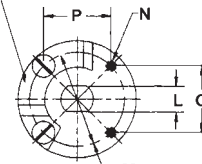


F-530-CS-R-66-FS
Carbon x Stainless
Flanged

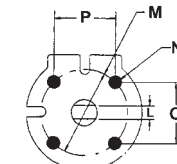


TOP FLANGE FOR
10" & 12"

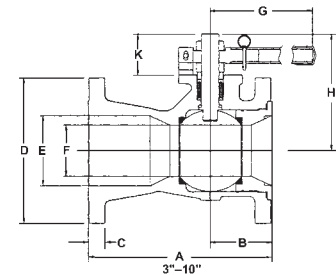
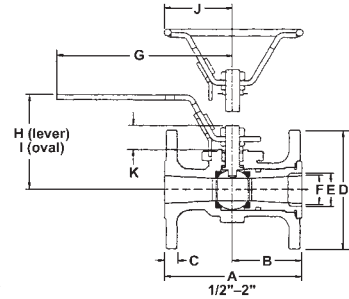
STOP PLATE
REMOVABLE
FOR ACTUATION



TOP FLANGE FOR
3" THRU 8"



TOP FLANGE FOR
1/2" THRU 2"



DIMENSIONS—WEIGHTS—QUANTITIES

| Size | Dimensions | | | | | | |
|---------|------------|----------|----------|----------|-----------|----------|-----|
| | A | B | C | D | E | F | |
| In. mm. | In. mm. | In. mm. | In. mm. | In. mm. | In. mm. | In. mm. | |
| 1/2 | 15 5.50 | 140 2.13 | 54 .59 | 15 3.81 | 97 .50 | 13 .43 | 11 |
| 3/4 | 20 6.00 | 152 2.31 | 59 .65 | 17 4.68 | 119 .75 | 19 .63 | 16 |
| 1 | 25 6.50 | 165 2.50 | 64 .71 | 18 4.94 | 125 1.00 | 25 .81 | 21 |
| 1 1/2 | 40 7.50 | 191 3.25 | 83 .81 | 21 6.13 | 156 1.50 | 33 1.19 | 30 |
| 2 | 50 8.50 | 216 3.00 | 76 .87 | 22 6.50 | 165 2.00 | 51 1.50 | 38 |
| 3 | 80 11.13 | 283 4.00 | 102 1.13 | 29 8.25 | 210 3.00 | 76 2.38 | 60 |
| 4 | 100 12.00 | 305 4.25 | 103 1.25 | 32 10.00 | 254 4.00 | 102 3.00 | 76 |
| 6 | 150 15.88 | 403 5.25 | 133 1.44 | 37 12.50 | 318 6.00 | 152 4.38 | 111 |
| 8 | 200 16.50 | 419 5.50 | 140 1.63 | 41 15.00 | 381 8.00 | 203 5.68 | 144 |
| 10 | 250 18.00 | 457 6.50 | 165 1.88 | 48 17.50 | 443 10.00 | 254 7.50 | 190 |

| Size | Dimensions | | | | | | | | | | | F-530-CS-R-66-FS | Lbs. | Kg. |
|---------|------------|-----------|----------|----------|-----------|----------|------------|-------------|---------|----------|---------|------------------|---------|---------|
| | G | H | I | J | K | L | M | N | O | P | | | | |
| In. mm. | In. mm. | In. mm. | In. mm. | In. mm. | In. mm. | In. mm. | In. mm. | In. mm. | In. mm. | In. mm. | In. mm. | In. mm. | In. mm. | In. mm. |
| 1/2 | 15 6.63 | 168 2.84 | 72 3.16 | 80 2.56 | 65 15 .25 | 6 1.68 | 43 .250-20 | 1.19 | 30 1.19 | 30 | 5.00 | 2.27 | | |
| 3/4 | 20 6.63 | 168 3.20 | 81 3.58 | 91 2.56 | 65 .76 | 19 .25 | 6 1.68 | 43 .250-20 | 1.19 | 30 1.19 | 30 | 8.00 | 3.64 | |
| 1 | 25 6.63 | 168 3.45 | 88 3.83 | 97 2.56 | 65 .93 | 24 .31 | 8 1.68 | 43 .250-20 | 1.19 | 30 1.19 | 30 | 10.00 | 4.55 | |
| 1 1/2 | 40 9.13 | 232 4.75 | 121 5.25 | 133 3.31 | 84 1.22 | 31 .56 | 14 2.06 | 52 .250-20 | 1.46 | 37 1.46 | 37 | 20.00 | 9.09 | |
| 2 | 50 9.13 | 232 4.88 | 124 5.38 | 137 3.31 | 84 1.36 | 35 .56 | 14 2.06 | 52 .250-20 | 1.46 | 37 1.46 | 37 | 23.00 | 10.45 | |
| 3 | 80 16.60 | 422 6.16 | 156 — | — — | — 1.97 | 50 .68 | 17 3.00 | 76 .375-16 | 2.12 | 54 2.12 | 54 | 54.00 | 24.55 | |
| 4 | 100 16.60 | 422 7.22 | 183 — | — — | — 2.16 | 55 .68 | 17 3.00 | 76 .375-16 | 2.12 | 54 2.12 | 54 | 91.50 | 41.59 | |
| 6 | 150 32.80 | 833 10.09 | 256 — | — — | — 3.59 | 91 1.13 | 29 4.50 | 114 .500-13 | 3.18 | 81 3.18 | 81 | 181.50 | 82.50 | |
| 8 | 200 — | — — | — — | — — | — 3.43 | 87 1.13 | 29 4.50 | 114 .500-13 | 3.18 | 81 3.18 | 81 | 257.00 | 116.82 | |
| 10 | 250 — | — — | — — | — — | — 5.56 | 141 1.75 | 44 — | .625-11 | 7.24 | 184 3.66 | 93 | 429.00 | 195.00 | |

Note: valves are static grounded by thrust washer.

♦ For detailed operating pressure, refer to pressure temperature chart on page 86.

WARNING: This product can expose you to chemicals including lead, which is known to the State of California to cause cancer and birth defects or other reproductive harm. For more information go to www.P65Warnings.ca.gov.

Visit our website for the most current information.