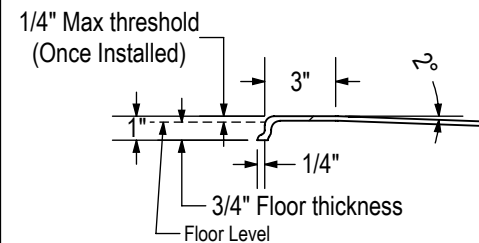
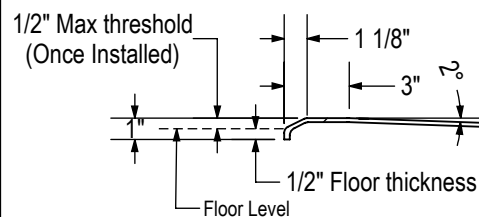


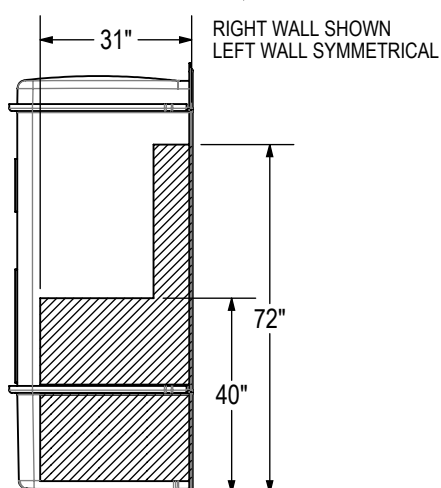
THRESHOLD DETAIL TYPE VERTICAL



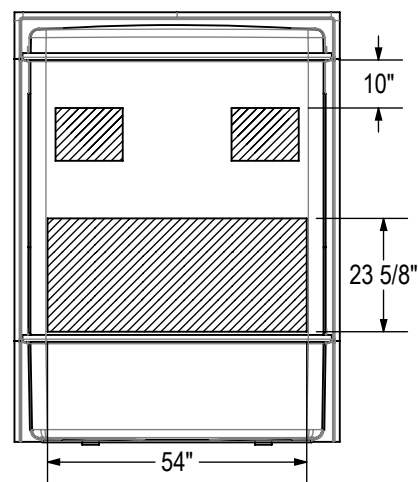
THRESHOLD DETAIL TYPE BEVELED



REINFORCEMENT BACKING



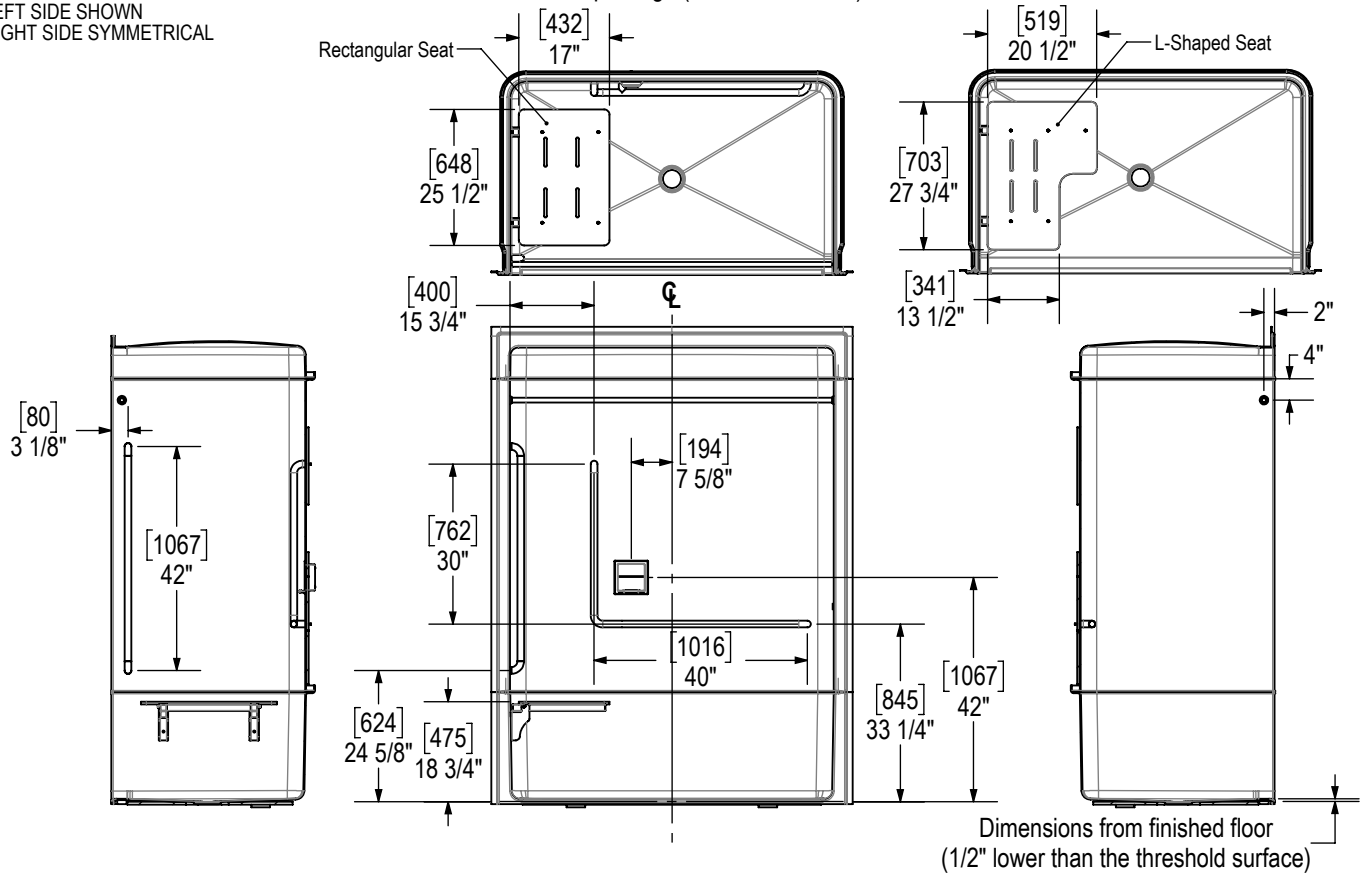
BACK WALL



All dimensions are approximate. Structure measurements must be verified against the unit to ensure proper fit.

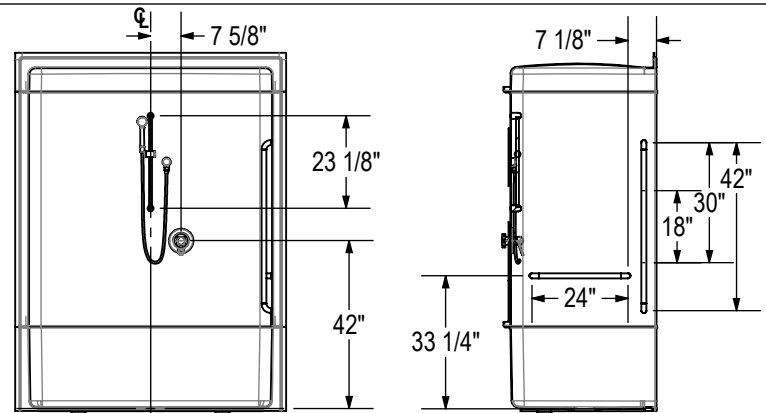
BASE MODEL WITH NATIONAL BUILDING CODE of Canada package (NBC/OBC/BCBC)

LEFT SIDE SHOWN
RIGHT SIDE SYMMETRICAL



ADDITIONAL OPTIONS

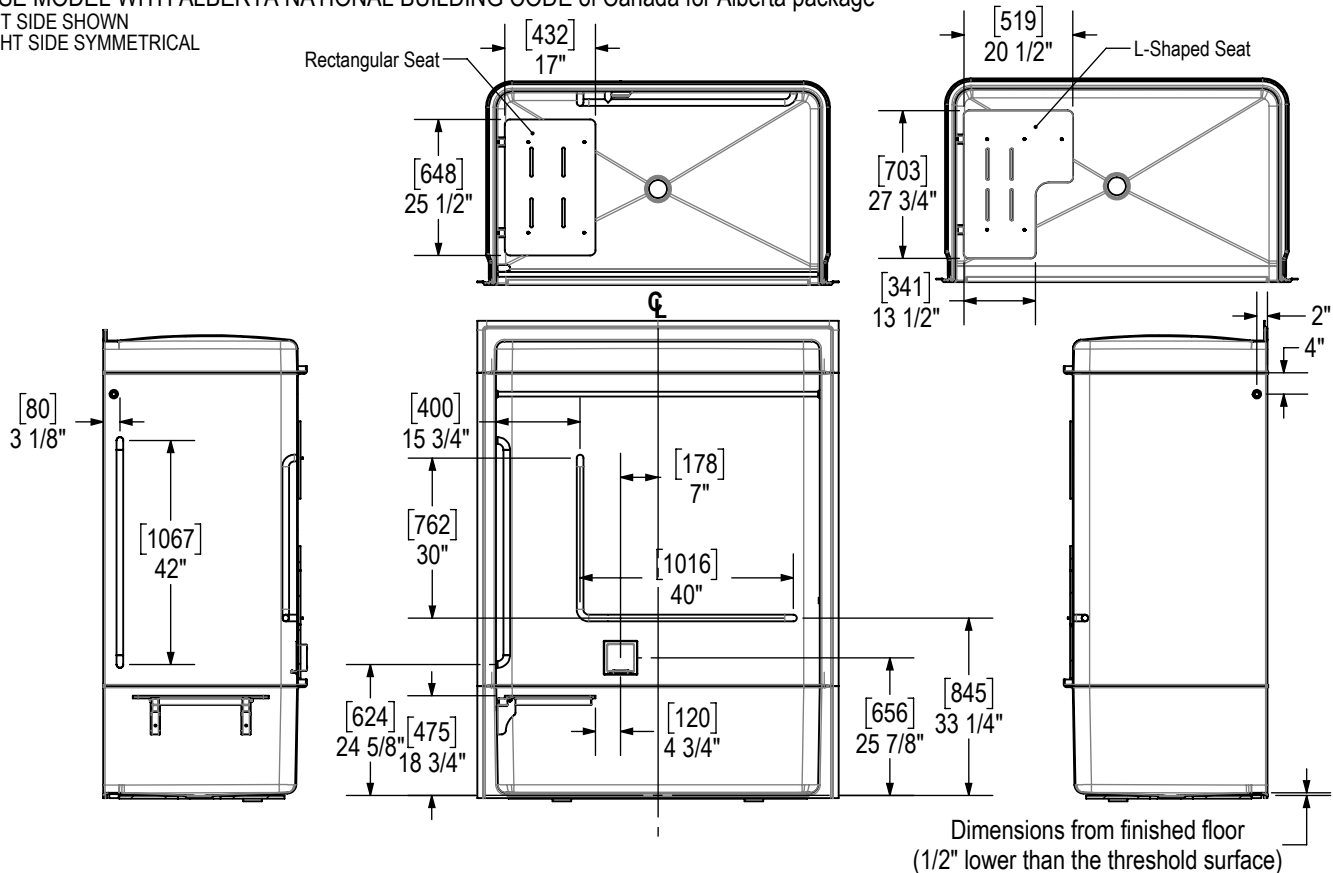
- OPT. 18" Grab Bar Vertical (RH)
- OPT. 24" Grab Bar Horizontal (RH)
- OPT. 30" Grab Bar Vertical (RH)
- OPT. 42" Grab Bar Vertical (RH)
- OPT. 24" Sliding Bar & Valve
- OPT. Shower Drain (Brass or ABS)



All dimensions are approximate. Structure measurements must be verified against the unit to ensure proper fit.

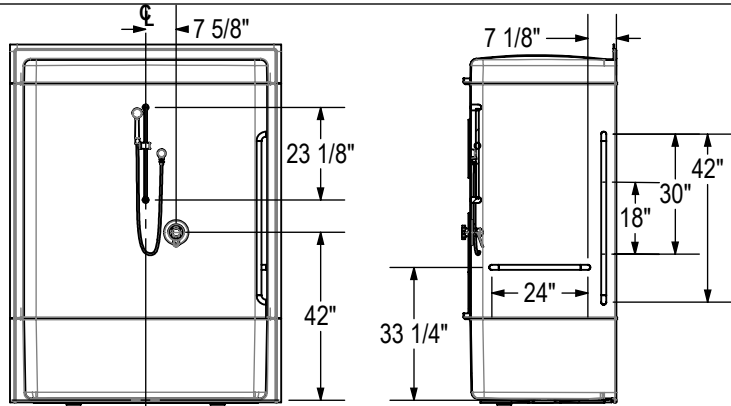
BASE MODEL WITH ALBERTA NATIONAL BUILDING CODE of Canada for Alberta package

LEFT SIDE SHOWN
RIGHT SIDE SYMMETRICAL



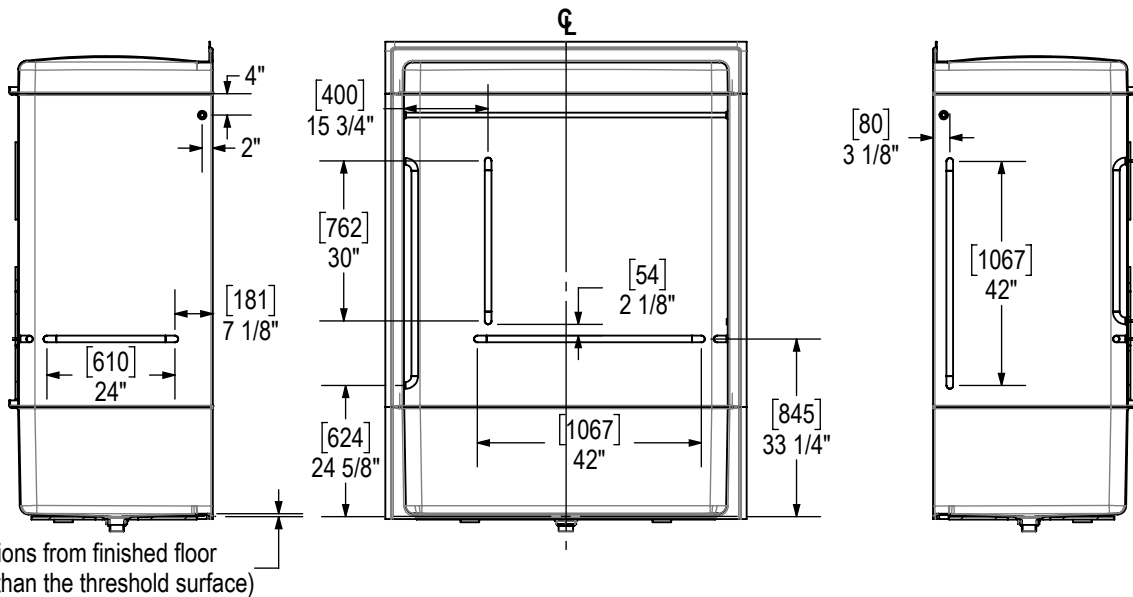
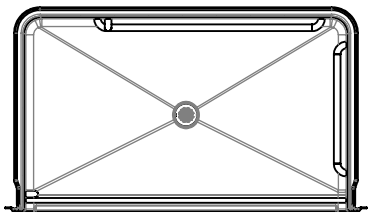
ADDITIONAL OPTIONS

- OPT. 18" Grab Bar Vertical (RH)
- OPT. 24" Grab Bar Horizontal (RH)
- OPT. 30" Grab Bar Vertical (RH)
- OPT. 42" Grab Bar Vertical (RH)
- OPT. 24" Sliding Bar & Valve
- OPT. Shower Drain (Brass or ABS)



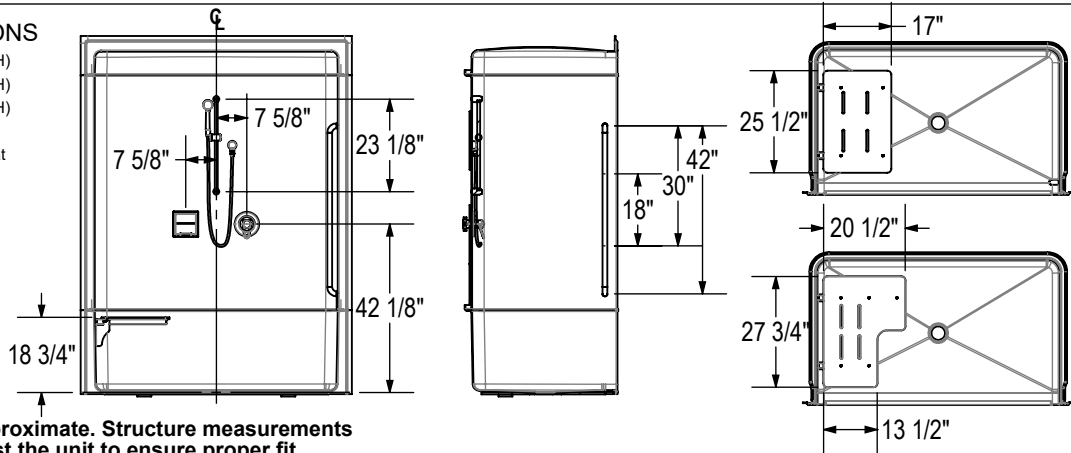
All dimensions are approximate. Structure measurements must be verified against the unit to ensure proper fit.

BASE MODEL WITH CSA B651 package
LEFT SIDE SHOWN
RIGHT SIDE SYMMETRICAL



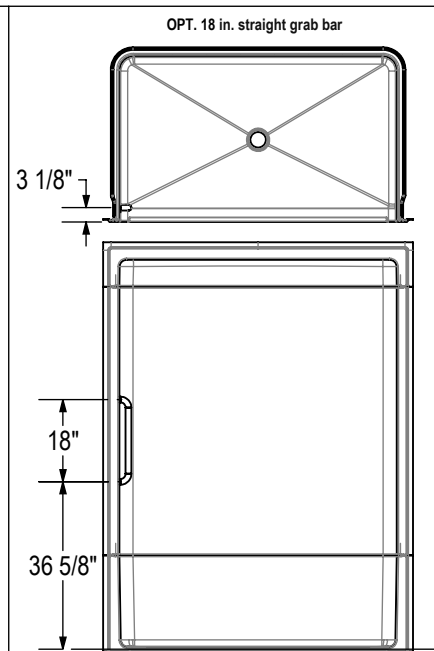
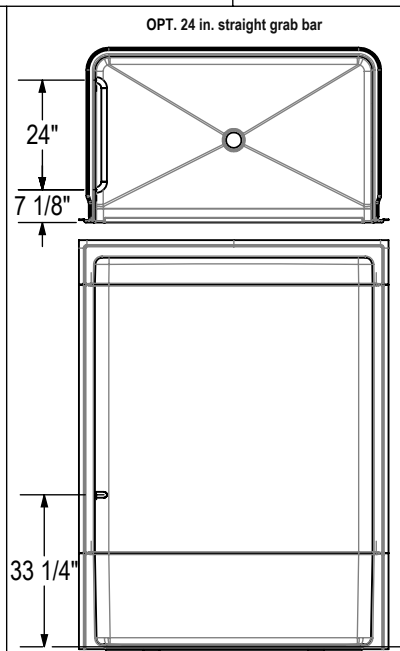
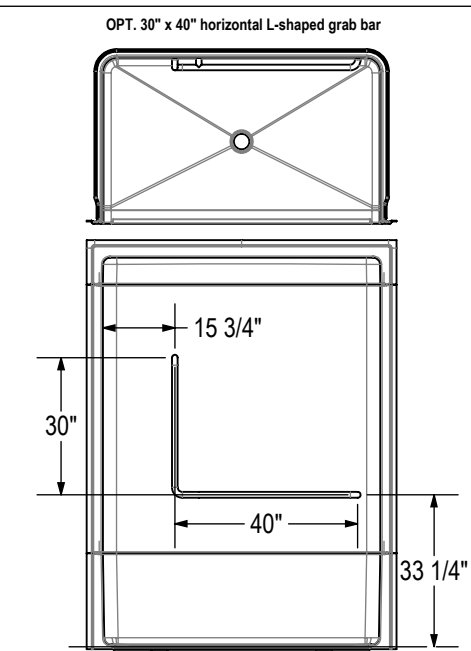
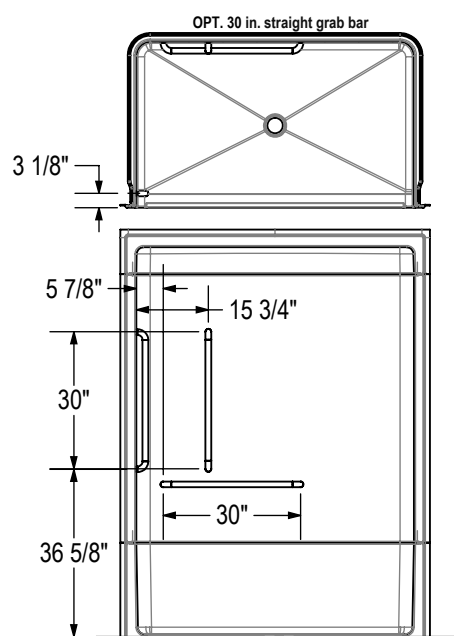
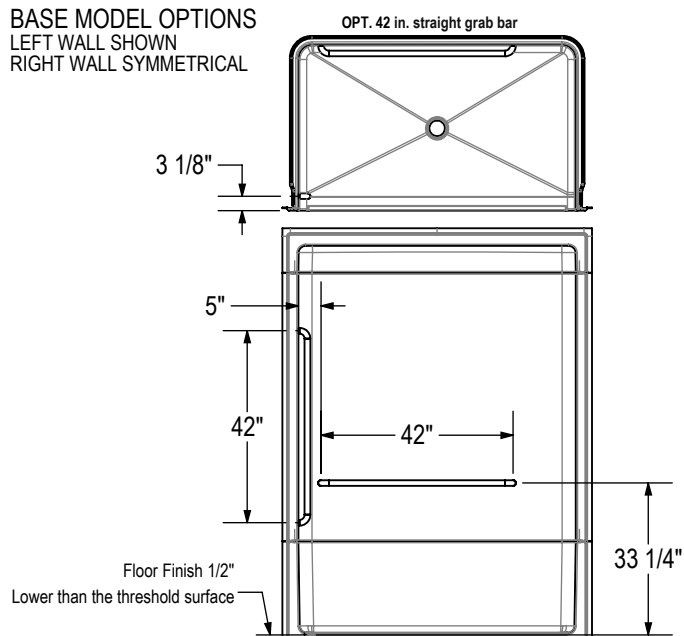
ADDITIONAL OPTIONS

- OPT. 18" Grab Bar Vertical (RH)
- OPT. 30" Grab Bar Vertical (RH)
- OPT. 42" Grab Bar Vertical (RH)
- OPT. L-shaped Fold Up Seat
- OPT. Rectangular Fold Up Seat
- OPT. Soap Dish
- OPT. 24" Sliding Bar & Valve



All dimensions are approximate. Structure measurements must be verified against the unit to ensure proper fit.

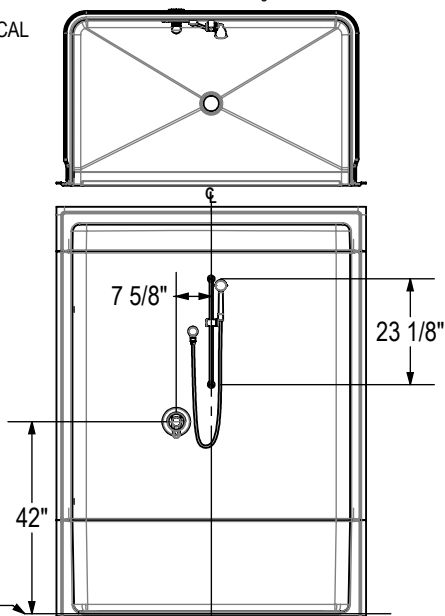
BASE MODEL OPTIONS
LEFT WALL SHOWN
RIGHT WALL SYMMETRICAL



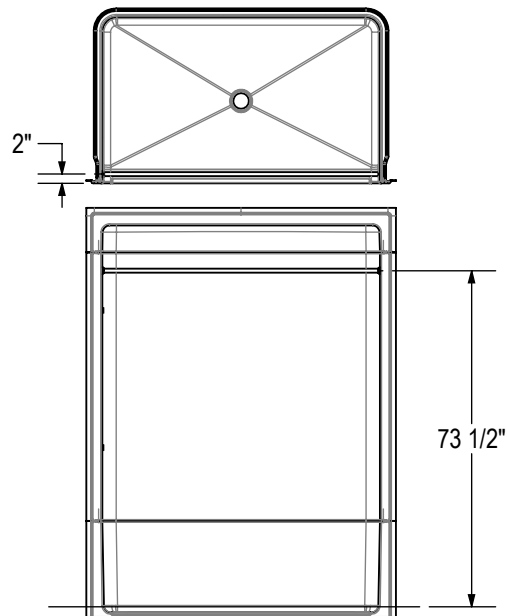
All dimensions are approximate. Structure measurements must be verified against the unit to ensure proper fit.

BASE MODEL WITH OPTIONS
LEFT WALL SHOWN
RIGHT WALL SYMMETRICAL

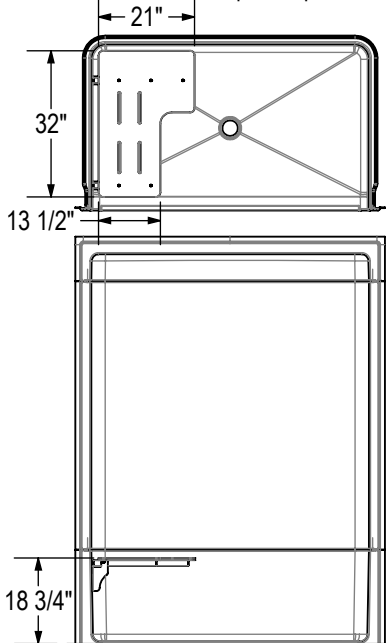
OPT. 24 in. Sliding Bar & Valve



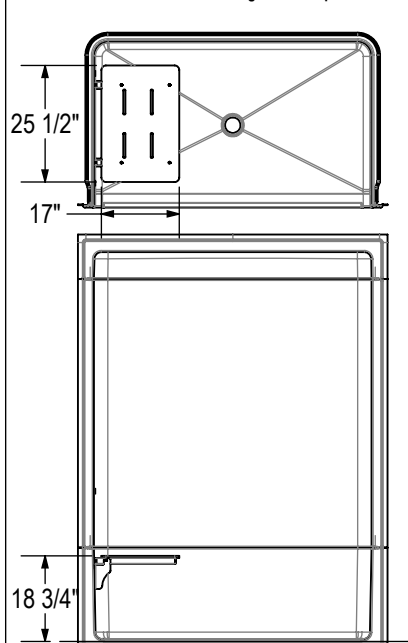
OPT. 60 in. curtain rod



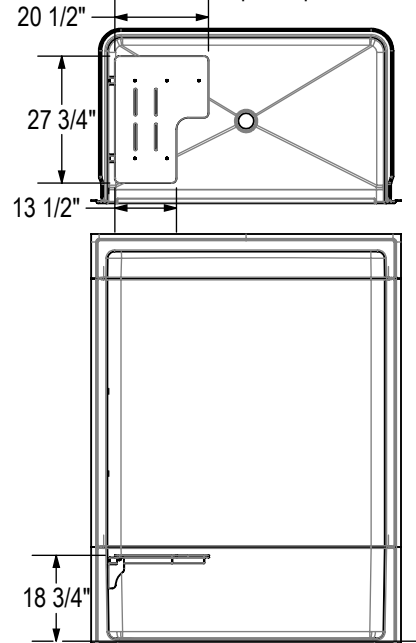
OPT. 32 in. L-Shaped Fold Up Seat



OPT. 25 1/2 in. Rectangular Fold Up Seat



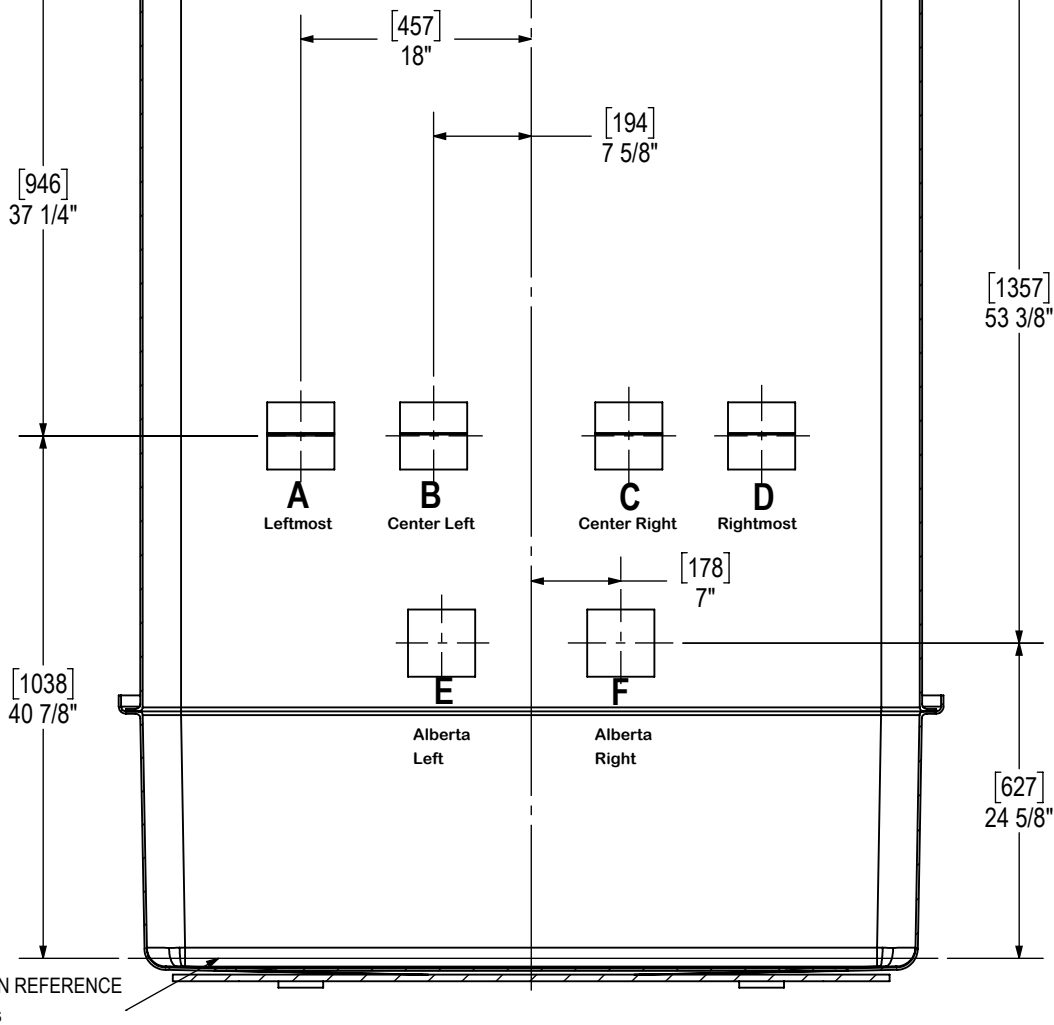
OPT. 27 in. L-shaped fold up seat



All dimensions are approximate. Structure measurements must be verified against the unit to ensure proper fit.

LOCATION REFERENCE

Top Flange



LOCATION REFERENCE

Up Radius

- All dimensions are approximate
- Structure measurements must be verified against the unit to ensure proper fit
- Installation to be completed in accordance with manufacturers specifications
- Do not scale drawings.