



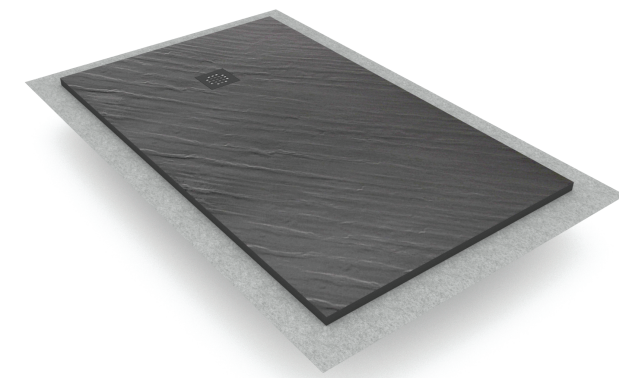
# Instruction Notices



Nous vous recommandons de lire intégralement le guide d'installation avant de commencer votre installation. L'utilisation de pieds ou plots de receveur est interdite.

We recommend that you read all the instructions carefully before starting to install your shower. Never use shower tray feet or mounting blocks.

Le recomendamos que lea la guía de instalación completamente antes de iniciar la instalación. Prohibido el uso de pies o tacos de plato de ducha.



not included

1



Mortier / Mortar / Mortero

2



Colle PVC / PVC adhesive / Cola de PVC

3



Colle carrelage / Tiling glue / Cola para azulejos

4

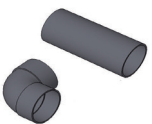


Bande de résilience / Adhesive sealing band / Cinta resiliente

5

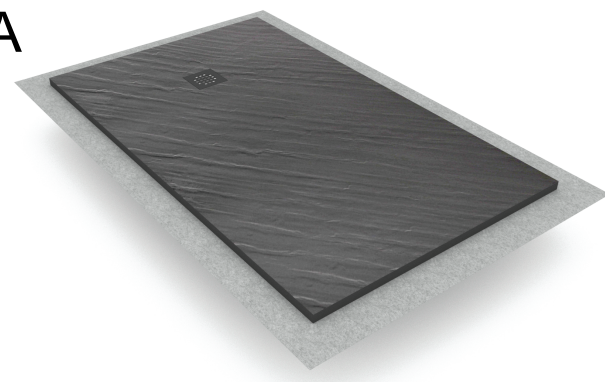


Enduit d'imperméabilisation / Sealant / Recubrimiento de impermeabilización

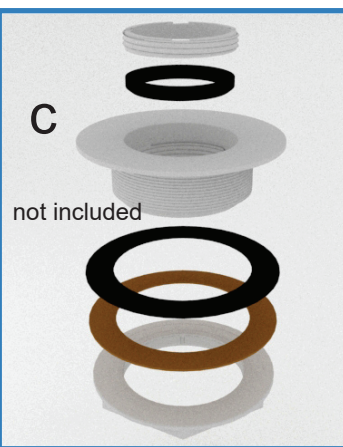


not included

A

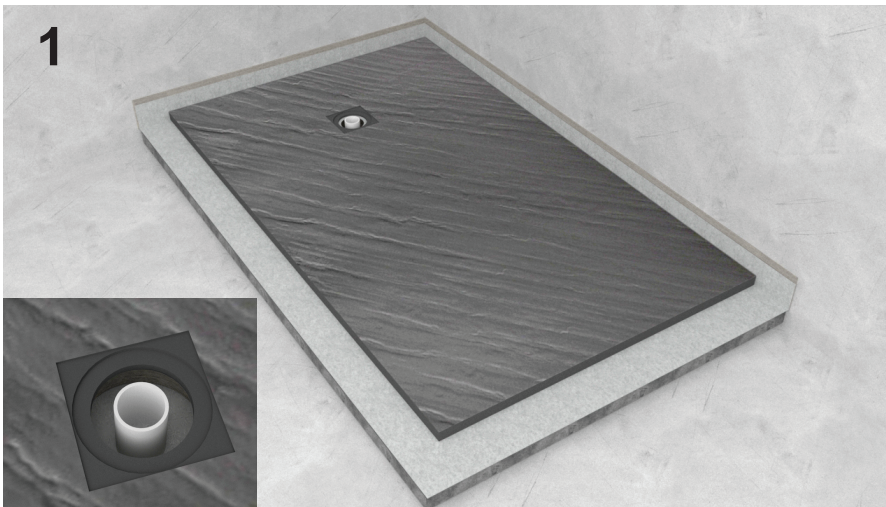
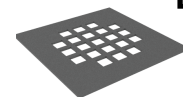


C

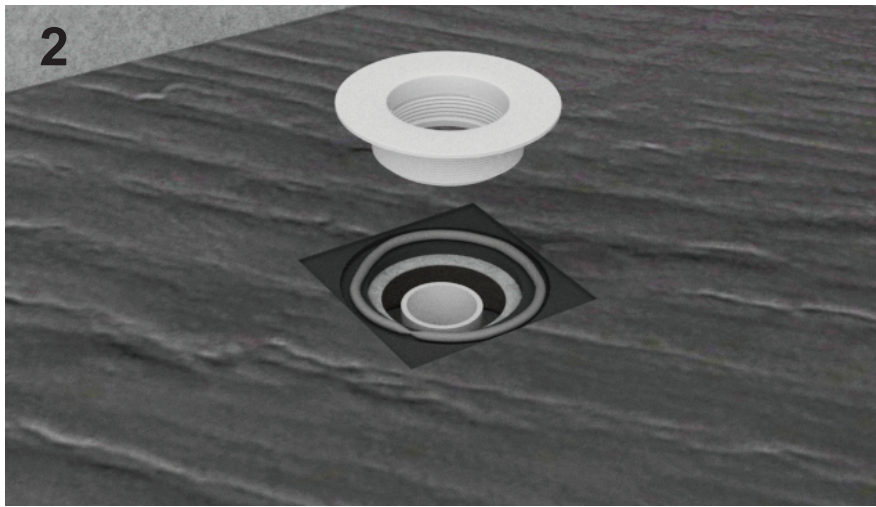


not included

B

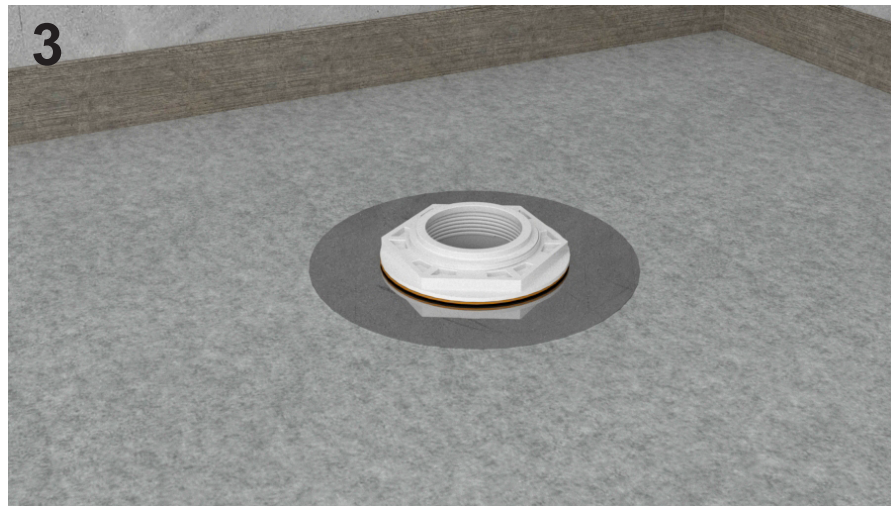


- Assurez-vous que le tuyau est au centre du point de drainage de la douche.
- Make sure that the pipe is at the center of the shower drainage point.
- Asegúrese de que la tubería esté en el centro del punto de drenaje de la ducha.

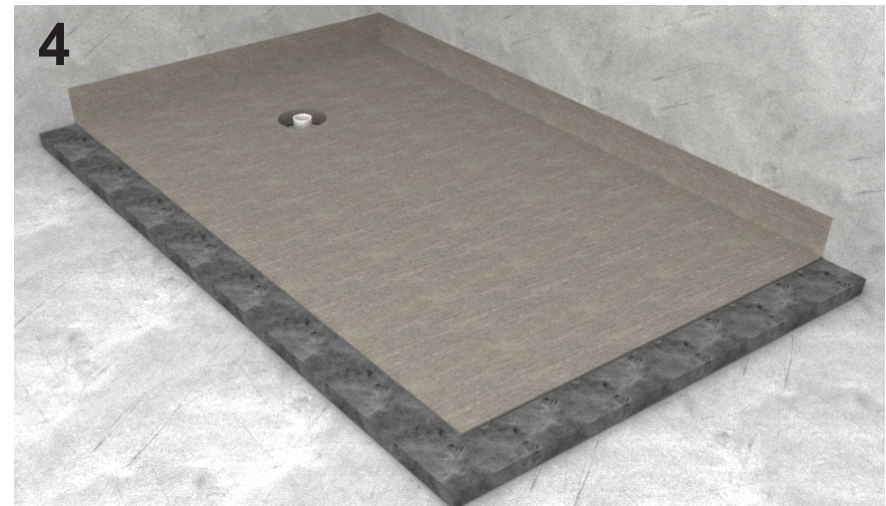


- Ajouter un anneau de silicone entre la partie supérieure du drain et le cadre d'installation
- Add a ring of Silicone between the top part of the drain and the installation frame
- Agregue un anillo de silicona entre la parte superior del desagüe y el marco de instalación

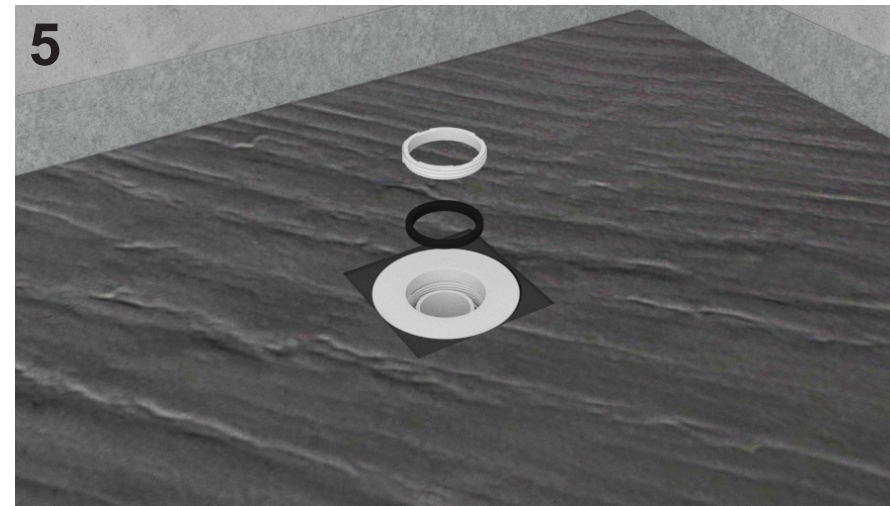




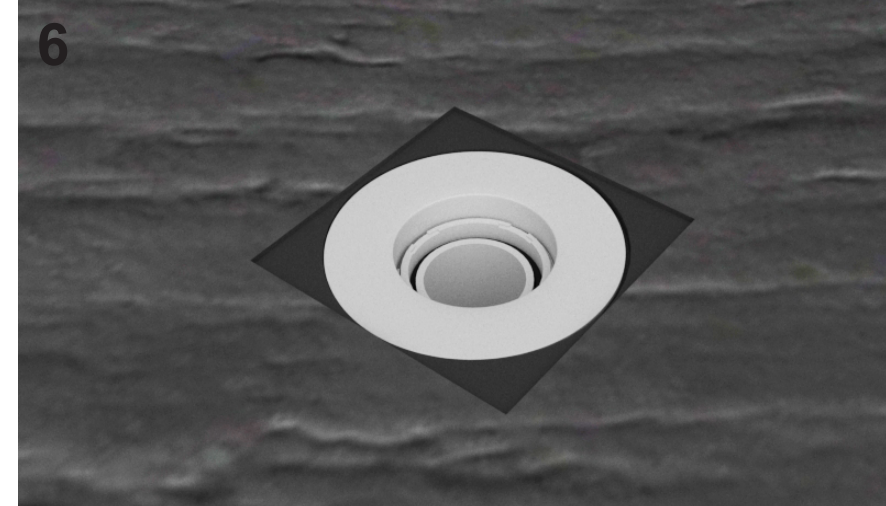
- 3
- Fixez l'anneau en caoutchouc, le bas et la partie supérieure du drain ensemble
  - Attach the rubber ring, bottom and the top part of the drain together
  - Coloque el anillo de goma, la parte inferior y la parte superior del drenaje juntos.



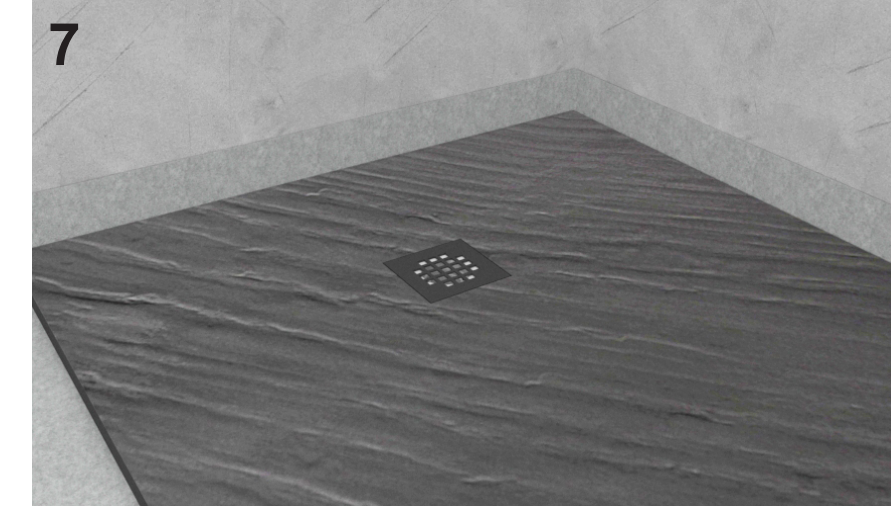
- 4
- Appliquer du ciment sur la zone où la douche sera installée.
  - Apply cement to the area where the shower will be installed .
  - Aplique cemento en el área donde se instalará la ducha.



- 5
- Installer la douche à l'emplacement final et placer l'anneau en caoutchouc sur le tuyau de vidange.
  - Install the shower into the final location and place the rubber ring over the drain pipe.
  - Instale la ducha en la ubicación final y coloque el anillo de goma sobre el tubo de drenaje.



- 6
- Appliquer la partie supérieure de la vis sur l'anneau en caoutchouc à l'aide de l'outil fourni.
  - Apply the top screw part over the rubber ring using the tool provided .
  - Aplique la parte superior del tornillo sobre el anillo de goma con la herramienta provista.



- 7
- Enfin, placez le couvercle de vidange sur le dessus du cadre et le drain .
  - Finally put the drain cover on top of the frame and the drain .
  - Finalmente, coloque la cubierta de drenaje en la parte superior del marco y el drenaje.

For warranty go to / Pour la garantie aller a / Para la garantía ir a  
[www.maax.com/us-warranty](http://www.maax.com/us-warranty)  
[www.maax.com/ca-warranty](http://www.maax.com/ca-warranty)  
[www.maax.com/garantie](http://www.maax.com/garantie)