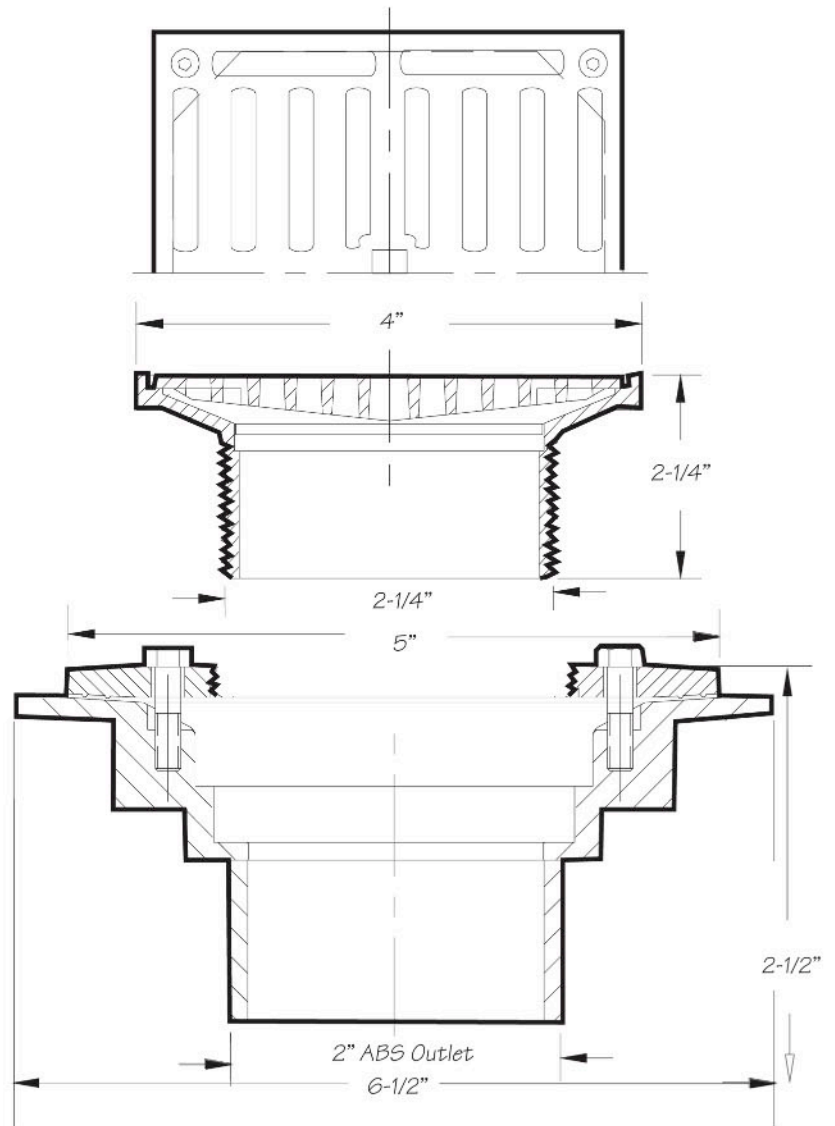


### INSTALLATION DIMENSIONS

*This model offers you the following features & benefits:*

- 4" Square Nickel-Brass Drain
- Fits 2" ABS Pipe
- Adjustable height
- For tile applications
- Available in 8 finishes
  - CPB - Polished Chrome
  - PN - Polished Nickel
  - TB - Tuscan Brass
  - EB - English Bronze
  - BRN - Brushed Nickel
  - ORB - Oil Rubbed Bronze
  - PVDBB - PVD Brushed Bronze
  - VB - Venetian Bronze



### Warranty

\*ALL MOUNTAIN PRODUCTS CARRY A 1 YEAR WARRANTY ON ALL WORKING PARTS.(except disposers)  
 \*MOST SPECIAL FINISHES HAVE A 1 YEAR WARRANTY IF INSTRUCTIONS ARE FOLLOWED PROPERLY. ORB, EB, MHB, WCP, AND TB HAVE A 90 DAY WARRANTY IF INSTRUCTIONS ARE FOLLOWED PROPERLY.  
 \*ALL PVD FINISHES COME WITH A LIFETIME WARRANTY IF INSTRUCTIONS ARE FOLLOWED PROPERLY  
 \*ALL XENYO COLORED PRODUCTS HAVE A LIFETIME WARRANTY  
 \*USE OF PLUMBERS PUTTY ON PRODUCTS VOIDS WARRANTY

Specifications subject to change without notice.