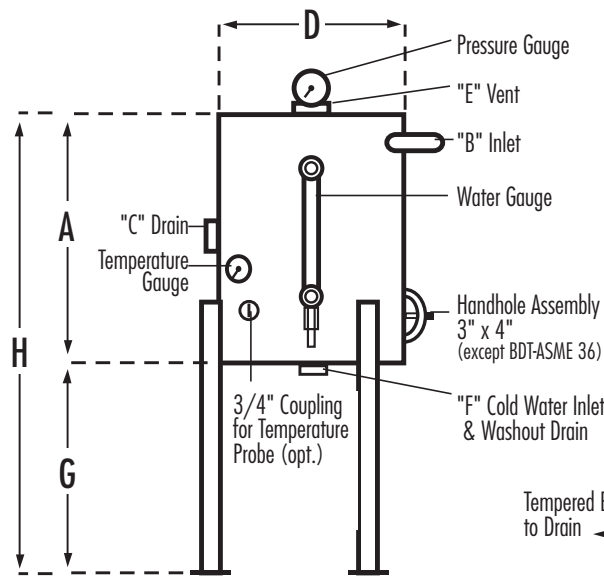


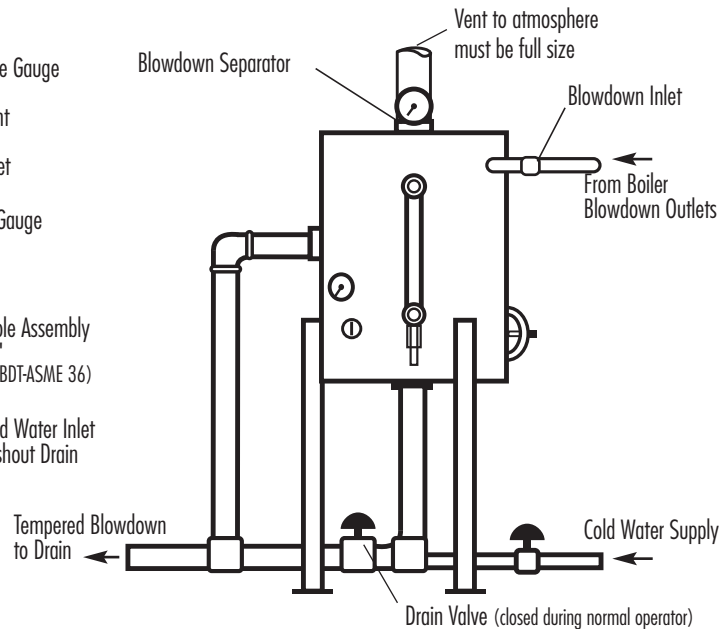
Blowdown Separator Tanks

Model CU-BDT-ASME 36, 42

DIMENSIONS AND FEATURES



SUGGESTED HOOK-UP TO BOILER



BDT MODEL	CU MODELS	DIMENSIONS								SHIPPING WEIGHT
		A	B	C	D	E	F	G	H	
CU-BDT-ASME 36	CU360 - CU2000	18"	1"	2"	12"	2"	2"	14"	32"	125
CU-BDT-ASME 42	CU2500 - CU4500	24"	1"	2"	18"	2-1/2"	2"	18"	42"	230

The Mr.Steam Blowdown Separator Tank design incorporates a water seal at the outlet which permits the operator to introduce cold water from the bottom to mix with the hot water and boiler steam blowdown in the separator. This reduces the outlet temperature to a level that makes it safe for discharge.

NOTE: 1BHP is approximately 10KW. All plumbing shall be performed by a qualified, licensed plumber and in accordance with applicable National and local Codes.

Maximum Boiler Working Pressure: 250 psi
 Maximum Blowdown Separator Pressure: 65 psi
 Blowdown Separators are sized in accordance with National Board Standards

Standard Equipment

- 0-100 lb. Pressure Gauge
- 0-200° Temperature Gauge
- Water Level Gauge

Constructed in accordance with Section VII Division I ASME Boiler & Pressure Vessel Code

FOR ILLUSTRATIVE PURPOSES ONLY. IMPORTANT NOTE: FOR SAFE AND TROUBLE FREE INSTALLATION visit mrsteam.com before installation to download the Installation, Operation and Maintenance Manual or refer to the manual provided with the unit.

MODEL	PROJECT INFORMATION	
<input type="checkbox"/> CU-BDT-ASME 36 <input type="checkbox"/> CU-BDT-ASME 42	Location:	Contractor:
	Architect:	Submitted By:
	Engineer:	Date:
Notes:		