

DESCRIPTION

- Metal construction with various finishes identified by suffix

OPERATION

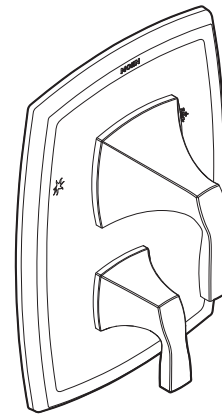
- Temperature operates through an 270° arc of handle travel (full cold to full hot)
- Adjustable temperature limit stop to control maximum hot water temperature
- 90° rotation of transfer valve handle with stops
- Pressure balancing mechanism maintains selected discharge temperature to $\pm 3^\circ$

STANDARDS

- Third party certified to ASME A112.18.1/CSA B-125.1
- **ADA**  for lever handles

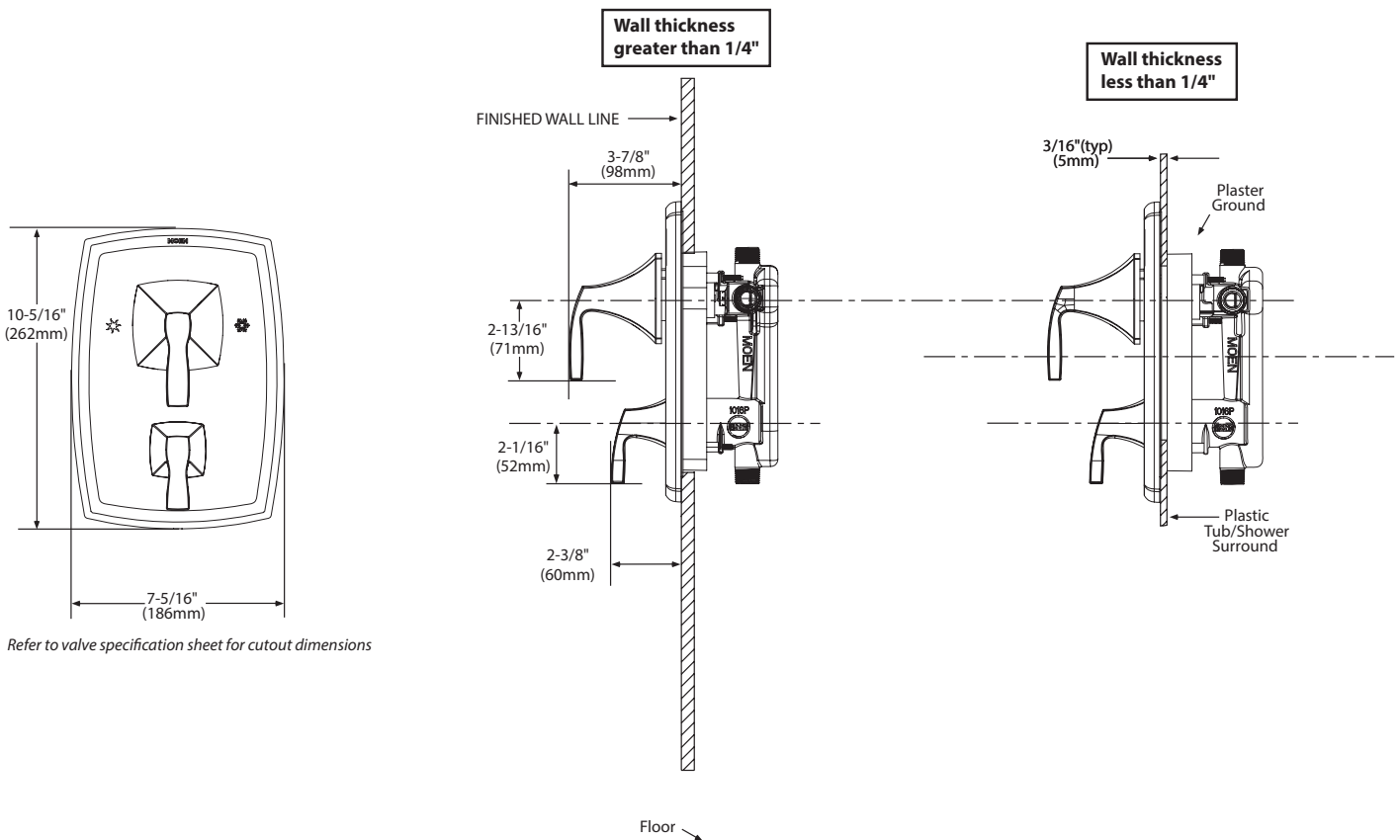
WARRANTY

- Lifetime limited warranty against leaks, drips and finish defects to the original homeowner
 - 10 year limited warranty when used in a multifamily installation
 - 5 year limited warranty when used in a commercial installation
- Visit www.moen.com/support for complete details and limitations



VOSS™ POSI-TEMP® with Built-In 3 Function Transfer Valve Trim

Models: T2690 series
Fits Valves: 2521
 2551
 2571
 2581



CRITICAL DIMENSIONS

(DO NOT SCALE)