



Nothing but **HEAVY DUTY.**

REDLITHIUM™

CP2.0

**MOST CONTROL.
NUT READY CUTS.**



2872-21

NEW

**M18™ BRUSHLESS
THREADED ROD CUTTER**

M18

**PERFORMANCE DRIVEN
TRADE FOCUSED
SYSTEM WIDE**





Nothing but **HEAVY DUTY.**



M18™ BRUSHLESS THREADED ROD CUTTER

1-1/2" Trim Length

For uniform cuts throughout the job

Optimized Blade Geometry

Delivers burr-free cuts

Centered Grip

For one-handed overhead operation

REDLINK™ Electronics

Jaw auto-retracts back to home



Fixed Lower Die

To align rod for best cut quality

Brushless Motor

Powers through 1/2" mild steel & 3/8" stainless steel rod

Reverse Button

To back out of unintended cuts

REDLITHIUM™ CP2.0 Battery Pack

Delivers 400+ cuts per charge on 3/8" mild steel

SPECIFICATIONS

Capacity for Coarse Threaded Rod	Mild Steel	1/4", 3/8", 1/2"
	Stainless Steel	1/4", 3/8"
Length	11.12"	
Weight	8.7 lbs	



KIT
2872-21 Contains: M18™ Brushless Threaded Rod Cutter, M18™ REDLITHIUM™ CP2.0 Battery Pack, Multi-Voltage Charger, Allen Key, Pre-Installed Cutting Dies & Carrying Case



TOOL-ONLY
2872-20 Contains: M18™ Brushless Threaded Rod Cutter, Allen Key & Pre-Installed Cutting Dies



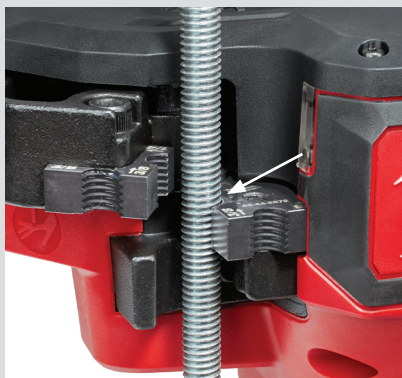
REPLACEMENT CUTTING DIE SET
48-44-2872

* Not actual size, scaled up to show detail

milwaukeetool.com



THREE STEP PROCESS FOR NUT READY CUTS



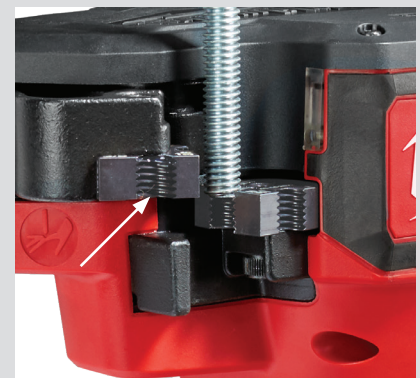
STEP 1:

Hold rod against tool's fixed lower jaw



STEP 2:

Pull trigger & hold



STEP 3:

Cut is complete once moving jaw automatically releases back to home position