

# Shower Rods Technical Specification

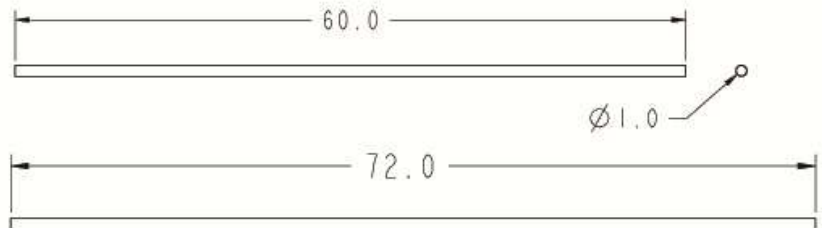
## Shower Rod – No Flange

2-100

### Stock Numbers:

- ❑ **2-100-5A – 5' Aluminum Shower Rod Set** Polished Chrome Finish, 1" Diameter Smooth Rod, No Flanges
- ❑ **2-100-6A – 6' Aluminum Shower Rod Set** Polished Chrome Finish, 1" Diameter Smooth Rod, No Flanges
- ❑ **2-10155SS – 5' Stainless Steel Shower Rod Set** Polished Finish, 1" Diameter Rod, No Flanges
- ❑ **2-100-5SS – 5' Stainless Steel Shower Rod Set** Polished Finish, 1" Diameter Heavy Duty Rod, No Flanges

### Dimensions:



### Materials:

“**A**” Shower Rods are 28gauge aluminum with a triple plated polished chrome finish.

“**SS**” Shower Rods are 28gauge stainless steel with a polished finish (except heavy-duty rods, which are 20 gauge).

### Installation Instructions:

Instructions vary with flange selected.

Stock Number: \_\_\_\_\_ Shower Rod  
By Creative Specialties



25300 AL MOEN DRIVE • NORTH OLMSTED, OH 44070  
CORPORATE HEADQUARTERS: (800) 321-8809 • FAX: (800) 848-6636  
INTERNATIONAL: (440) 962-2000 • FAX: (440) 962-2726  
CUSTOMER SERVICE (USA): 800-882-0116 • FAX: (888) 379-2720  
WWW.MOEN.COM

©Copyright Creative Specialties International

Literature #BA1631