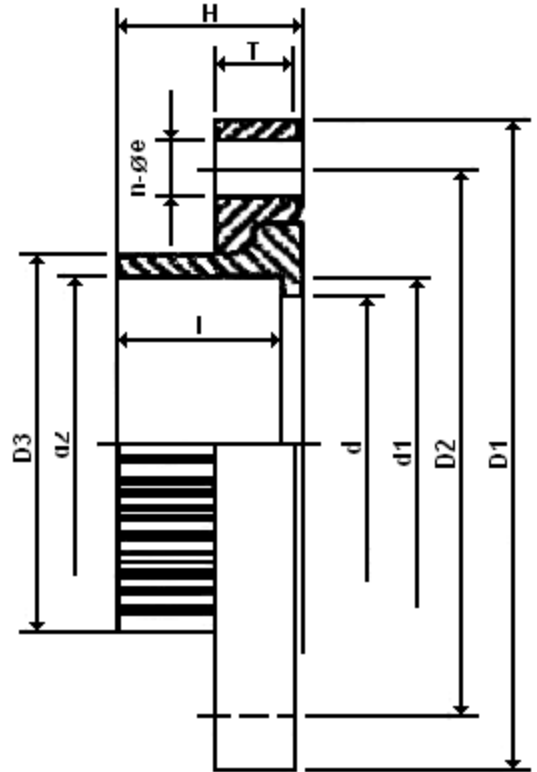


PVCF Van Stone Flange • Spec Sheet



FEATURES & BENEFITS

- Loose Ring Flange
- Schedule 80
- Socket (Swivel) Connection
- Socket Diameter Conforms to ASTM D-2467
- ANSI B16.5
- Class 150
- 150 PSI @ 73.4° F
- Flanged Sizes 2" – 10"

DIMENSIONS

Part #	Size	D1	D2	D3	d	d1	d2	H	T	l	n-øe
PVCF08	2"	5.99	4.77	2.99	2.01	2.37	2.39	1.69	0.19	1.50	4-19
PVCF10	3"	7.56	5.99	4.26	3.03	3.49	3.52	2.13	1.02	1.88	4-19
PVCF11	4"	9.02	7.53	5.24	4.02	4.49	4.52	2.52	1.10	2.25	8-19
PVCF13	6"	11.19	9.50	7.53	6.15	6.62	6.66	3.35	1.26	3.00	8-22
PVCF14	8"	13.51	11.74	9.38	8.04	8.62	8.67	4.65	1.42	4.02	8-22
PVCF15	10"	16.00	14.26	12.21	10.09	10.75	10.80	5.91	1.65	4.85	12-24



CALIFORNIA 5595 Fresca Dr., La Palma CA 90623
TEXAS 1150 Silber Rd., Houston TX 77055
ILLINOIS 278 Windy Point Dr., Glendale Heights, IL 60139
GEORGIA 113 Industrial Blvd., Americus, Georgia 31709
NEW YORK PO Box 27, Rt.22, Brewster NY 10509
 WEB: www.matco-norca.com

• Phone: 866-532-8306 • Fax: 866-532-8307
 • Phone: 800-935-5456 • Fax: 713-680-2999
 • Phone: 844-412-5068 • Fax: 800-640-2252
 • Phone: 800-433-7526 • Fax: 800-533-5134
 • Phone: 800-431-2082 • Fax: 845-278-9056
 EMAIL: mail@matco-norca.com