

# FY-950BN Pop-Up Assembly

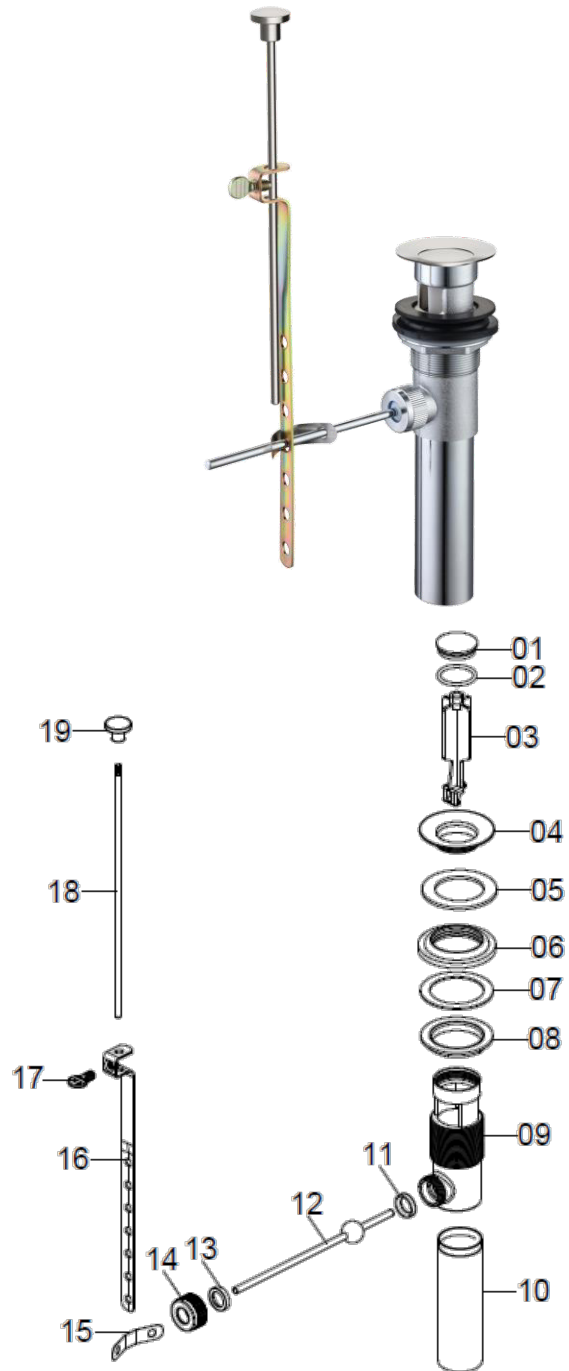
## Specification Sheet

### FEATURES & BENEFITS

- Brushed Nickel Brass
- With Lift Rod
- CSA & cUPC Approved

### MATERIAL SPECIFICATIONS

No.	Part	Material
1	Stopper	Brass
2	O-Ring	Rubber
3	Plunger	POM
4	Flange	Brass
5	Washer	Rubber
6	Washer	Rubber
7	Washer	Ldpe
8	Nut	Brass
9	Pop-Up Body	Brass
10	Tailpiece	Stainless Steel
11	Pivot	POM
12	Pivot Rod	Steel
13	Pivot	POM
14	Nut	Brass
15	Spring Clip	Stainless Steel
16	Strap	Steel
17	Thumb Screw	Steel
18	Lift Rod	Steel
19	Finial	ABS



**MATCO**  
**NORCA**