

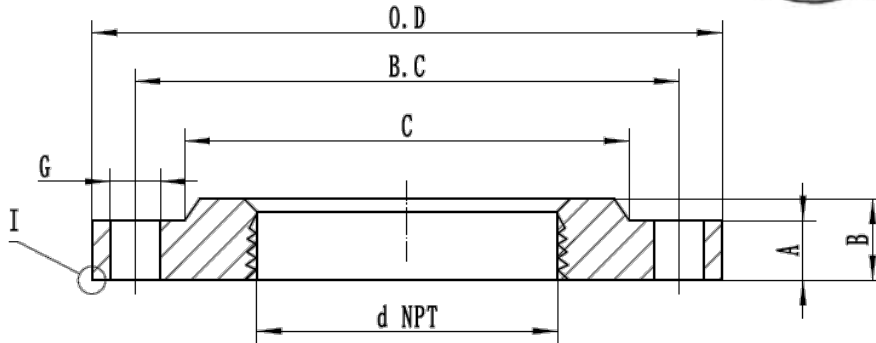
# Cast Iron Companion, Reducing & Blind Flanges

## Specification Sheet

### FEATURES & BENEFITS

- Available in Black and Galvanized
- Cast Iron Conforms to ASTM A126 & ASTM A48
- ANSI Class 125 Flanges
- Meets ASME B16.1 Standard
- Companion Sizes: 1-1/2" - 12"
- Reducing Sizes: 3"x2" - 8"x6"
- Blind Sizes: 2" - 12"

**APPLICATIONS:** Waterworks, Pump & Well, Plumbing, Irrigation



**COMPANION FLANGE DIMENSIONS**

Size	Size x OD	A min.	B	C	B.C	G	Number of Bolts
1-1/2"	1-1/2" x 5"	0.56	0.9	2.56	3.88	0.62	4
2"	2" x 6"	0.62	1.0	3.06	4.75	0.75	4
2-1/2"	2-1/2" x 7"	0.69	1.1	3.56	5.50	0.75	4
3"	3" x 7-1/2"	0.75	1.2	4.25	6.00	0.75	4
4"	4" x 9"	0.94	1.3	5.31	7.50	0.75	8
5"	5" x 10"	0.94	1.4	6.44	8.50	0.88	8
6"	6" x 11"	1.00	1.6	7.56	9.50	0.88	8
8"	8" x 13-1/2"	1.12	1.8	9.69	11.80	0.88	8
10"	10" x 16"	1.19	1.9	11.90	14.30	1.00	12
12"	12" x 19"	1.25	2.2	14.10	17.00	1.00	12

**REDUCING FLANGE DIMENSIONS**

Size	Size x OD	A min.	B	C	B.C	G	Number of Bolts
3" x 2"	2" x 7-1/2"	0.69	1.00	3.06	6.00	0.75	4
3" x 2-1/2"	2-1/2" x 7-1/2"	0.75	1.10	3.56	6.00	0.75	4
4" x 2"	2" x 9"	0.94	1.10	3.06	7.50	0.75	8
4" x 2-1/2"	2-1/2" x 9"	0.94	1.10	3.56	7.50	0.75	8
4" x 3"	3" x 9"	0.94	1.19	4.25	7.50	0.75	8
5" x 2-1/2"	2-1/2" x 10"	0.94	1.10	3.56	8.50	0.88	8
5" x 4"	4" x 10"	0.94	1.31	5.31	8.50	0.88	8
6" x 2"	2" x 11"	1.00	1.00	3.06	9.50	0.88	8
6" x 2-1/2"	2-1/2" x 11"	1.00	1.10	3.56	9.50	0.88	8
6" x 3"	3" x 11"	1.00	1.19	4.25	9.50	0.88	8
6" x 4"	4" x 11"	1.00	1.31	5.31	9.50	0.88	8
6" x 5"	5" x 11"	1.00	1.44	6.44	9.50	0.88	8
8" x 2"	2" x 13-1/2"	1.12	1.12	3.06	11.75	0.88	8
8" x 2-1/2"	2-1/2" x 13-1/2"	1.12	1.12	3.56	11.75	0.88	8
8" x 3"	3" x 13-1/2"	1.12	1.19	4.25	11.75	0.88	8
8" x 4"	4" x 13-1/2"	1.12	1.31	5.31	11.75	0.88	8
8" x 5"	5" x 13-1/2"	1.12	1.44	6.44	11.75	0.88	8
8" x 6"	6" x 13-1/2"	1.12	1.56	7.56	11.75	0.88	8



# Cast Iron Companion, Reducing & Blind Flanges

## Specification Sheet

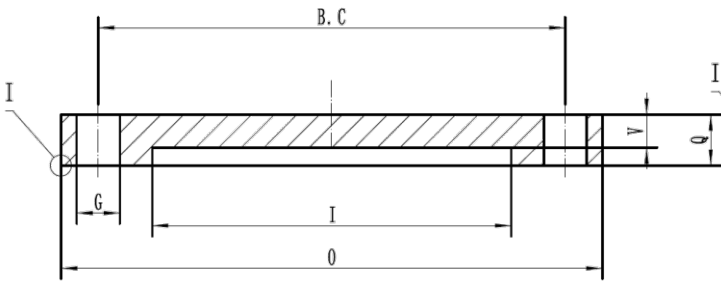
### FEATURES & BENEFITS

- Available in Black and Galvanized
- Cast Iron Conforms to ASTM A126 & ASTM A48
- ANSI Class 125 Flanges
- Meets ASME B16.1 Standard
- Companion Sizes: 1-1/2" - 12"
- Reducing Sizes: 3"x2" - 8"x6"
- Blind Sizes: 2" - 12"

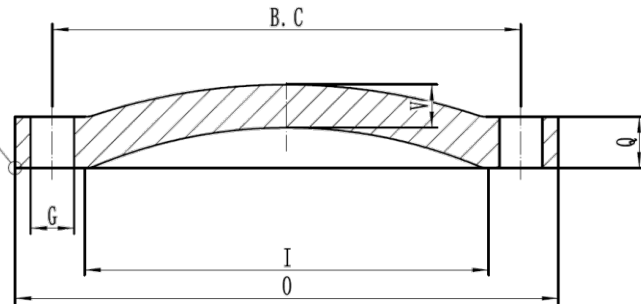
**APPLICATIONS:** Waterworks, Pump & Well, Plumbing, Irrigation



**BLIND FLANGES 2" – 10"**



**BLIND FLANGES 12"**



### BLIND FLANGE DIMENSIONS

Size	O	Q min.	V	B.C	G	Number of Bolts
2"	6.00	0.62	0.56	4.75	0.75	4
2-1/2"	7.00	0.69	0.63	5.50	0.75	4
3"	7.50	0.75	0.69	6.00	0.75	4
4"	9.00	0.94	0.88	7.50	0.75	8
6"	11.00	1.00	0.94	9.50	0.88	8
8"	13.50	1.12	1.06	11.75	0.88	8
10"	16.00	1.19	1.12	14.25	1.00	8
12"	19.00	1.25	0.81	17.00	1.00	12

