

# Stainless Steel Shielded Transition Couplings

## Specification Sheet

### FEATURES & BENEFITS

- For Use With Dissimilar DWV Pipe & Fittings
- Installation Torque: 60" lbs
- Maximum Test Pressure: 4.3 PSI
- Maximum Operating Temp.: 180°F
- Product Conforms with: ASTM C1460, ASTM C564, CSA B602, UPC, & cUPC
- Clamps Joined With Rivets
- Sizes 1/2" - 8"

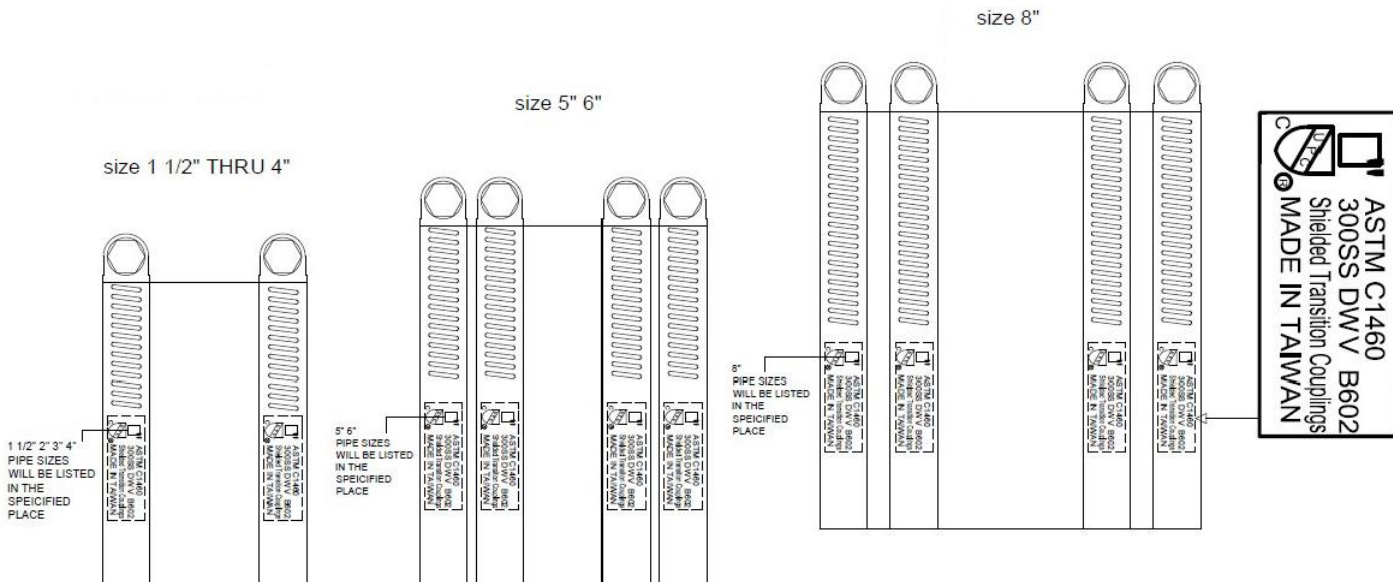


### MATERIAL SPECIFICATIONS

Part	Material
Band	SS 301
Housing	SS 304
Screw	SS 304 (5/16" Hex - No Slot)
Gasket	Neoprene

### LEGEND

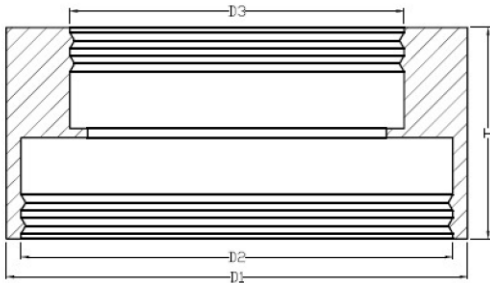
CI	No Hub Cast Iron
PL	Sch. 40 PVC
ST	Steel, Iron Pipe Size
XHCI	Extra Heavy Weight Cast Iron



**MATCO**  
**NORCA**

# Stainless Steel Shielded Transition Couplings

## Specification Sheet



Part #	D1	D2	D3	H
<b>Cast Iron to Plastic, Steel or Extra-Heavy Cast Iron</b>				
4570707CP	2.20	1 1/2" CI, PL. or ST.	1 1/2" CI, PL. or ST.	2.13
4570808CP	2.53	2" CI, PL. or ST.	2" CI, PL. or ST.	2.13
4570807CP	2.72	2" CI, PL. or ST.	1 1/2" CI, PL. or ST.	2.13
4571010CP	3.77	3" PL, ST, or XH CI.	3" CI	2.13
4571110CP	4.74	4" CI	3" PL, ST, or XH CI.	2.13
4571111CP	4.74	4" PL, ST, or XH CI.	4" CI	2.13
4571212CP	5.78	5" PL, ST, or XH CI.	5" CI	3.00
4571313CP	6.95	6" PL, ST, or XH CI.	6" CI	3.00
4571414CP	8.83	8" PL, ST, or XH CI.	8" CI	3.98
<b>Cast Iron, Plastic or Steel to Copper</b>				
4570706CK	2.20	1 1/2" CI, PL. or ST.	1 1/4" Copper or 1" PL.	2.13
4570707CK	2.20	1 1/2" CI, PL. or ST.	1 1/2" Copper or 1 1/4" PL.	2.13
4570807CK	2.72	2" CI, PL. or ST.	1 1/2" Copper or 1 1/4" PL.	2.13
4570808CK	2.72	2" CI, PL. or ST.	2" Copper	2.13
4571010CK	3.77	3" CI	2" Copper	2.13
4571010CK	3.77	3" CI	3" Copper	2.13
4571110CK	4.74	4" CI	3" Copper	2.13
4571111CK	4.74	4" CI	4" Copper	2.13
4570705CK	2.20	1 1/2" CI, PL or ST	3/4" PL, ST or 1" Copper	2.13
4571007CK	3.77	3" CI	1 1/2" Copper or 1 1/4" PL.	2.13
4570806CK	2.75	2" CI, PL. or ST.	1 1/4" Copper or 1" PL.	2.13
<b>Cast Iron, Plastic or Steel to Tubular</b>				
4570707T	2.20	1 1/2" CI, PL. or ST.	1 1/2" Tubular	2.13
4570807T	2.75	2" CI, PL. or ST.	1 1/2" Tubular	2.13
4570707TT	2.20	1 1/2" Tubular	1 1/2" Tubular	2.13
<b>Copper to Copper</b>				
4570707K	1.90	1 1/2" Copper	1 1/2" Copper or 1 1/4" PL.	2.13
4570808K	2.72	2" Copper	2" Copper	2.13
4570807K	2.72	2" Copper	1 1/2" Copper or 1 1/4" PL.	2.13
4571010K	3.77	3" Copper	3" Copper	2.13
<b>Cast Iron to Cast Iron, Plastic or Steel</b>				
4571008C	3.77	3" CI	2" CI, PL. or ST.	2.13
4571108C	4.74	4" CI	2" CI, PL. or ST.	2.13
4571110C	4.74	4" CI	3" CI	2.13
4571211C	5.78	5" CI	4" CI	3.00
<b>Plastic, Steel or Extra-Heavy Cast Iron to Plastic, Steel or XH CI</b>				
4571010P	3.77	3" PL, ST, or XH CI.	3" PL, ST, or XH CI.	2.13
4571110P	4.74	4" PL, ST, or XH CI.	3" PL, ST, or XH CI.	2.13
4571111P	4.74	4" PL, ST, or XH CI.	4" PL, ST, or XH CI.	2.13
4571313P	6.95	6" PL, ST, or XH CI.	6" PL, ST, or XH CI.	3.00
<b>Copper to Cast Iron, Plastic or Steel</b>				
4570807KC	2.72	2" Copper	1 1/2" CI, PL. or ST.	2.13
4571008KC	3.77	3" Copper	2" CI, PL. or ST.	2.13
4571110KC	4.74	4" Copper	3" CI	2.13
<b>Plastic, Steel or Extra-Heavy Cast Iron to Copper</b>				
4571008PK	3.77	3" PL, ST, or XH CI.	2" Copper	2.13
4571010PK	3.77	3" PL, ST, or XH CI.	3" Copper	2.13
4571110PK	4.74	4" PL, ST, or XH CI.	3" Copper	2.13
4571111PK	4.74	4" PL, ST, or XH CI.	4" Copper	2.13
<b>Plastic, Steel or Extra-Heavy Cast Iron to Cast Iron, Plastic or Steel</b>				
4571008PC	3.77	3" PL, ST, or XH CI.	2" CI, PL. or ST.	2.13
<b>Thinwall Plastic to Sch. 38 Plastic</b>				
4571010TWP	3.77	3" Sch. 40 PL.	3" Thinwall PL.	2.13
4571111TWP	4.74	4" Sch. 40 PL.	4" Thinwall PL.	2.13
<b>Copper to Tubular</b>				
4570707KT	2.20	1 1/2" Copper	1 1/2" Tubular	2.13
4570807KT	2.75	2" Copper	1 1/2" Tubular	2.13