

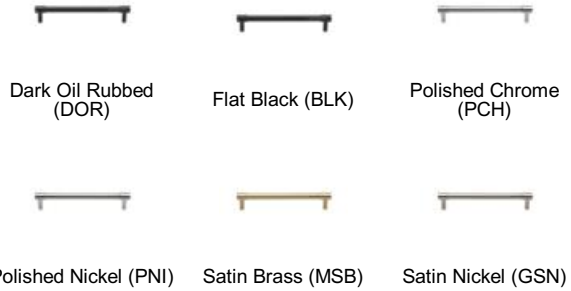
**MT4434 PHOENIX PULL**

MT4434 Phoenix Pull in Polished Chrome (PCH) 6" screw centers







**MATERIAL**

Brass

**AVAILABLE FINISHES**



**Polished Chrome (PCH)** - A bold classic contemporary finish on Solid Brass. The mirror effect reflects light and colors of the surroundings and will complement perfectly any fashionable color scheming. Polished Chrome is easy to clean and is low maintenance.

Finish	Code	Length	Screw Center	Width	Projection
 Dark Oil Rubbed	MT4434-102-DOR	4 3/4"	4"	7/16"	1 1/4"
	MT4434-152-DOR	6 3/4"	6"	7/16"	1 1/4"
	MT4434-203-DOR	8 3/4"	8"	7/16"	1 1/4"
	MT4434-254-DOR	10 3/4"	10"	7/16"	1 1/4"
 Flat Black	MT4434-102-BLK	4 3/4"	4"	7/16"	1 1/4"
	MT4434-152-BLK	6 3/4"	6"	7/16"	1 1/4"
	MT4434-203-BLK	8 3/4"	8"	7/16"	1 1/4"
	MT4434-254-BLK	10 3/4"	10"	7/16"	1 1/4"
 Polished Chrome	MT4434-102-PCH	4 3/4"	4"	7/16"	1 1/4"
	MT4434-152-PCH	6 3/4"	6"	7/16"	1 1/4"
	MT4434-203-PCH	8 3/4"	8"	7/16"	1 1/4"
	MT4434-254-PCH	10 3/4"	10"	7/16"	1 1/4"
 Polished Nickel	MT4434-102-PNI	4 3/4"	4"	7/16"	1 1/4"
	MT4434-152-PNI	6 3/4"	6"	7/16"	1 1/4"
	MT4434-203-PNI	8 3/4"	8"	7/16"	1 1/4"
	MT4434-254-PNI	10 3/4"	10"	7/16"	1 1/4"
 Satin Brass	MT4434-102-MSB	4 3/4"	4"	7/16"	1 1/4"
	MT4434-152-MSB	6 3/4"	6"	7/16"	1 1/4"
	MT4434-203-MSB	8 3/4"	8"	7/16"	1 1/4"
	MT4434-254-MSB	10 3/4"	10"	7/16"	1 1/4"
 Satin Nickel	MT4434-102-GSN	4 3/4"	4"	7/16"	1 1/4"
	MT4434-152-GSN	6 3/4"	6"	7/16"	1 1/4"
	MT4434-203-GSN	8 3/4"	8"	7/16"	1 1/4"
	MT4434-254-GSN	10 3/4"	10"	7/16"	1 1/4"