

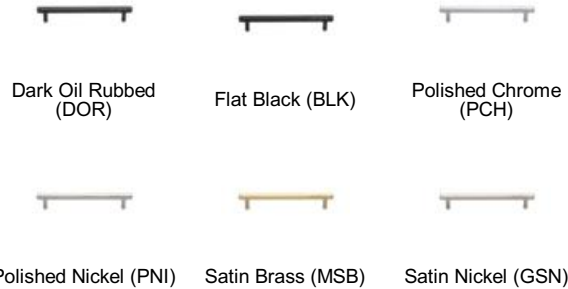
MT4422 HEX PROFILE PULL

MT4422 Hex Profile Pull in Polished Chrome (PCH) 6" screw centers


MATERIAL

Brass

AVAILABLE FINISHES



Polished Chrome (PCH) - A bold classic contemporary finish on Solid Brass. The mirror effect reflects light and colors of the surroundings and will complement perfectly any fashionable color scheming. Polished Chrome is easy to clean and is low maintenance.

Finish	Code	Length	Screw Center	Width	Projection
	MT4422-102-DOR	5 1/4"	4"	1/2"	1 5/16"
	MT4422-152-DOR	7 1/4"	6"	1/2"	1 5/16"
	MT4422-203-DOR	9 1/4"	8"	1/2"	1 5/16"
	MT4422-254-DOR	11 1/4"	10"	1/2"	1 5/16"
Flat Black	MT4422-102-BLK	5 1/4"	4"	1/2"	1 5/16"
	MT4422-152-BLK	7 1/4"	6"	1/2"	1 5/16"
	MT4422-203-BLK	9 1/4"	8"	1/2"	1 5/16"
	MT4422-254-BLK	11 1/4"	10"	1/2"	1 5/16"
Polished Chrome	MT4422-102-PCH	5 1/4"	4"	1/2"	1 5/16"
	MT4422-152-PCH	7 1/4"	6"	1/2"	1 5/16"
	MT4422-203-PCH	9 1/4"	8"	1/2"	1 5/16"
	MT4422-254-PCH	11 1/4"	10"	1/2"	1 5/16"
Polished Nickel	MT4422-102-PNI	5 1/4"	4"	1/2"	1 5/16"
	MT4422-152-PNI	7 1/4"	6"	1/2"	1 5/16"
	MT4422-203-PNI	9 1/4"	8"	1/2"	1 5/16"
	MT4422-254-PNI	11 1/4"	10"	1/2"	1 5/16"
Satin Brass	MT4422-102-MSB	5 1/4"	4"	1/2"	1 5/16"
	MT4422-152-MSB	7 1/4"	6"	1/2"	1 5/16"
	MT4422-203-MSB	9 1/4"	8"	1/2"	1 5/16"
	MT4422-254-MSB	11 1/4"	10"	1/2"	1 5/16"
Satin Nickel	MT4422-102-GSN	5 1/4"	4"	1/2"	1 5/16"
	MT4422-152-GSN	7 1/4"	6"	1/2"	1 5/16"
	MT4422-203-GSN	9 1/4"	8"	1/2"	1 5/16"
	MT4422-254-GSN	11 1/4"	10"	1/2"	1 5/16"