

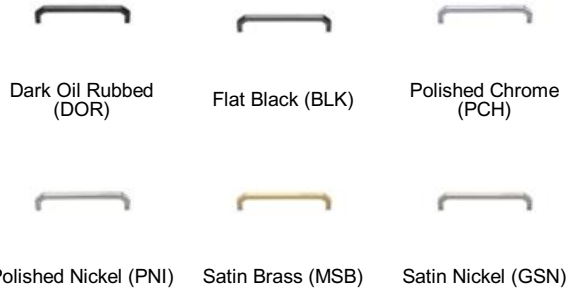
**MT3465 CABINET PULL**

MT3465 Cabinet Pull in Polished Nickel (PNI) 6" screw centers

**MATERIAL**

Brass

**AVAILABLE FINISHES**



**Polished Nickel (PNI)** - With its subtle golden hue this is a mellow alternative to polished chrome. The finish is not coated and will oxidise naturally. If not regularly buffed with a soft cloth this finish will subtly change over time by taking on an aged patina. The finish may be restored with a gentle polish.

Finish	Code	Length	Screw Center	Width	Projection
Dark Oil Rubbed	MT3465-102-DOR	4 3/8"	4"	7/16"	1 1/4"
	MT3465-152-DOR	6 3/8"	6"	7/16"	1 1/4"
	MT3465-203-DOR	8 3/8"	8"	7/16"	1 1/4"
	MT3465-254-DOR	10 3/8"	10"	1/2"	1 1/4"
Flat Black	MT3465-102-BLK	4 3/8"	4"	7/16"	1 1/4"
	MT3465-152-BLK	6 3/8"	6"	7/16"	1 1/4"
	MT3465-203-BLK	8 3/8"	8"	7/16"	1 1/4"
	MT3465-254-BLK	10 3/8"	10"	1/2"	1 1/4"
Polished Chrome	MT3465-102-PCH	4 3/8"	4"	7/16"	1 1/4"
	MT3465-152-PCH	6 3/8"	6"	7/16"	1 1/4"
	MT3465-203-PCH	8 3/8"	8"	7/16"	1 1/4"
	MT3465-254-PCH	10 3/8"	10"	1/2"	1 1/4"
Polished Nickel	MT3465-102-PNI	4 3/8"	4"	7/16"	1 1/4"
	MT3465-152-PNI	6 3/8"	6"	7/16"	1 1/4"
	MT3465-203-PNI	8 3/8"	8"	7/16"	1 1/4"
	MT3465-254-PNI	10 3/8"	10"	1/2"	1 1/4"
Satin Brass	MT3465-102-MSB	4 3/8"	4"	7/16"	1 1/4"
	MT3465-152-MSB	6 3/8"	6"	7/16"	1 1/4"
	MT3465-203-MSB	8 3/8"	8"	7/16"	1 1/4"
	MT3465-254-MSB	10 3/8"	10"	1/2"	1 1/4"
Satin Nickel	MT3465-102-GSN	4 3/8"	4"	7/16"	1 1/4"
	MT3465-152-GSN	6 3/8"	6"	7/16"	1 1/4"
	MT3465-203-GSN	8 3/8"	8"	7/16"	1 1/4"
	MT3465-254-GSN	10 3/8"	10"	1/2"	1 1/4"