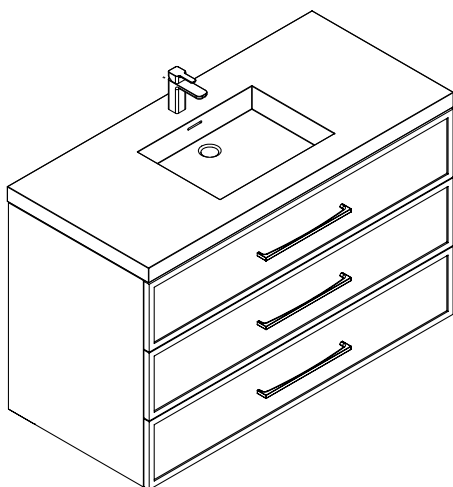


Specifications and Installation Guide

B825-Legend *Wall Hung Vanity Collection*

Models

- B825-24-002-XX
- B825-30-002-XX
- B825-36-002-XX
- B825-42-002-XX
- B825-48C-002-XX
- B825-48D-002-XX
- B825-60C-002-XX
- B825-60D-002-XX
- B825-72D-002-XX



B835-Marquis *Free Standing Vanity Collection*

- B835-24-001-XX
- B835-30-001-XX
- B835-36-001-XX
- B835-42-001-XX
- B835-48C-001-XX
- B835-48D-001-XX
- B835-60C-001-XX
- B835-60D-001-XX
- B835-72D-001-XX

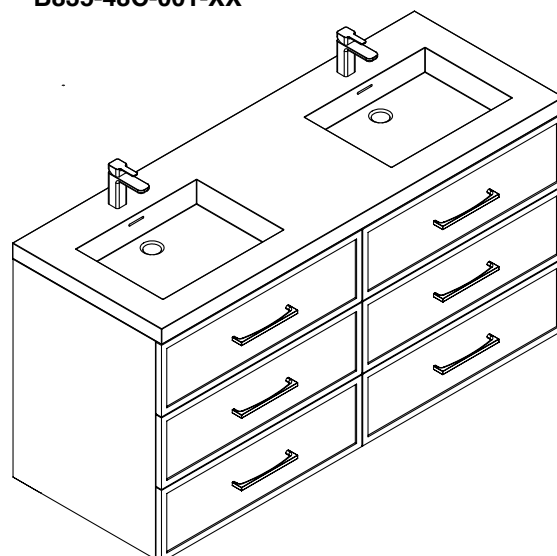


Table of Contents

	Page / Page
Specifications 24/30/36/42/48C.....	2
Specifications 48D.....	3
Specifications 60C.....	4
Specifications 60D/72D.....	5
Typical Installation: Wall Hung /B825-24/30/36/42/48C/48D/60D/72D-Legend.....	6
Typical Installation: Wall Hung /B825-60C-Legend.....	7
Installation Steps: Wall Hung /B825-Legend.....	8-9
Feet/Base Installation: Free Standing /B835-Marquis.....	10
Typical Installation: Free Standing /B835-24/30/36/42/48C/48D/60D/72D-Marquis.....	11
Typical Installation: Free Standing /B835-60C-Marquis.....	12

Legend/Marquis - 24"/30"/36"/42"/48" - Single Bowl

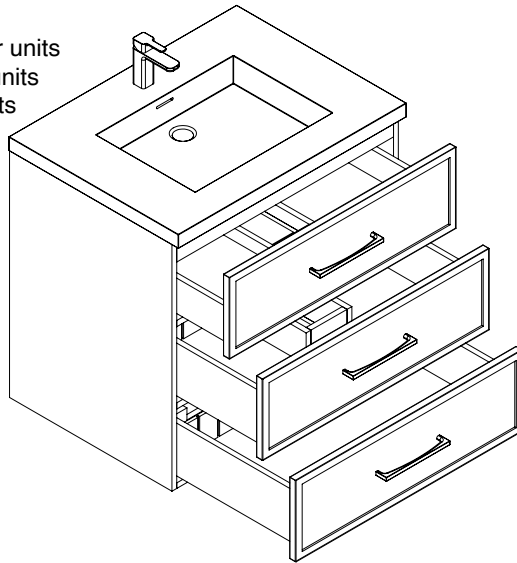
Cabinet Specifications

Features

- Legend-Wall Hung Vanity or Marquis-Free Standing Vanity
- Three fully adjustable drawers with full-extension soft-close European hardware.
- Middle and Bottom drawers include adjustable tempered glass dividers
- Furniture grade plywood or moisture-resistant wood composite construction
- Finished with a sealed, decorative veneer or with premium polyurethane solid color paints
- Handle/Feet finish options: polished chrome (PC), brushed nickel (BN), polished nickel (PN), matte black (MB) and satin brass (SB)
- Feet furnished separately for field installation.

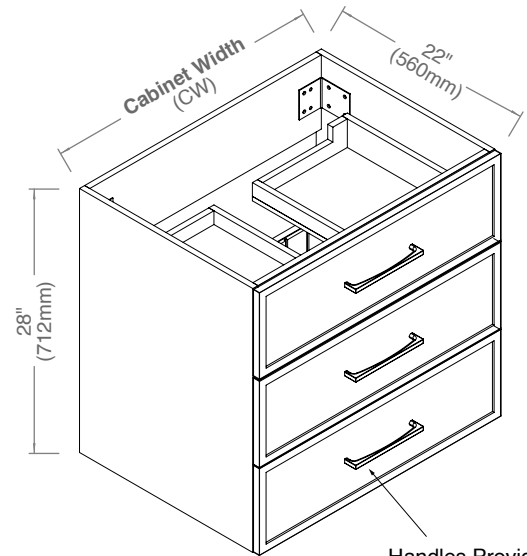
Drawer Boxes

- Matching color for solid color units
- Light grey for wood veneer units
- Solid wood with dovetail joints for decorative veneer units



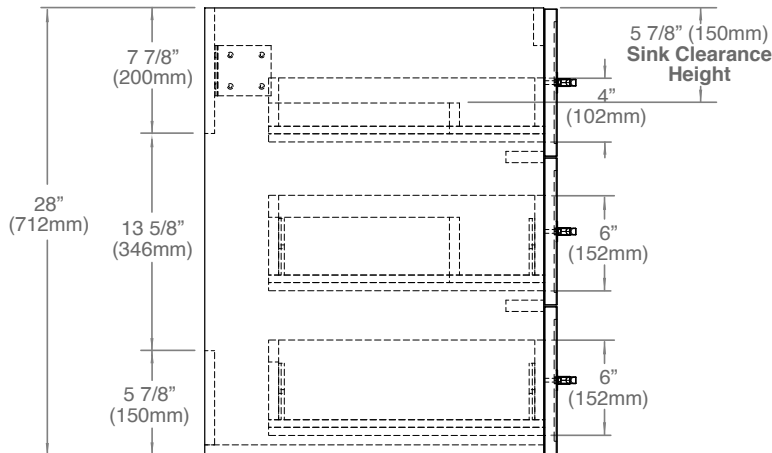
Top/Basin options

- Ceramic basins
- Glass top/basin
- X-Stone 2"H top/basin
- X-Stone 4-1/2"H Trough sink
- Quartzstone 3/4"H countertop with ceramic basin
- Quartzstone 3"H countertop with ceramic basin

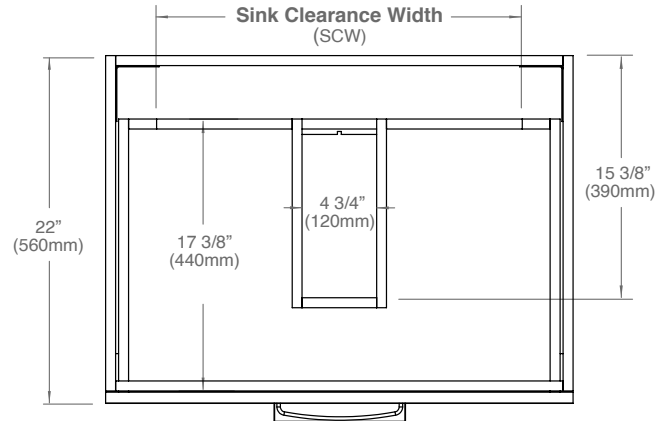


Handles Provided
To be installed in the field.
See page 4 and 6

SIDE VIEW



TOP VIEW



MODEL	CW	SCW	Package Dimensions	Weight
B825/B835-24-00X-XX	23 5/8" (600mm)	19" (484mm)	26"(660)x25"(635)x31-5/8"(803)	118 lbs / 54 Kgs
B825/B835-30-00X-XX	29 5/8" (753mm)	23 1/8" (589mm)	32"(813)x25"(635)x31-5/8"(803)	136 lbs / 62 Kgs
B825/B835-36-00X-XX	35 5/8" (905mm)	29 1/8" (741mm)	38"(965)x25"(635)x31-5/8"(803)	152 lbs / 69 Kgs
B825/B835-42-00X-XX	41 5/8" (1058mm)	35 1/8" (894mm)	44"(1118)x25"(635)x31-5/8"(803)	162 lbs / 74 Kgs
B825/B835-48C-00X-XX	47 5/8" (1210mm)	41 1/8" (1046mm)	50"(1270)x25"(635)x31-5/8"(803)	187 lbs / 85 Kgs

For clarification, please contact Madeli Customer Care at (800) 819-6988 Ext.1 or service@madeli.com

All dimensions are approximate and subject to standard tolerance. Specifications subject to change without prior notice.

Legend/Marquis - 48" - Double Bowl

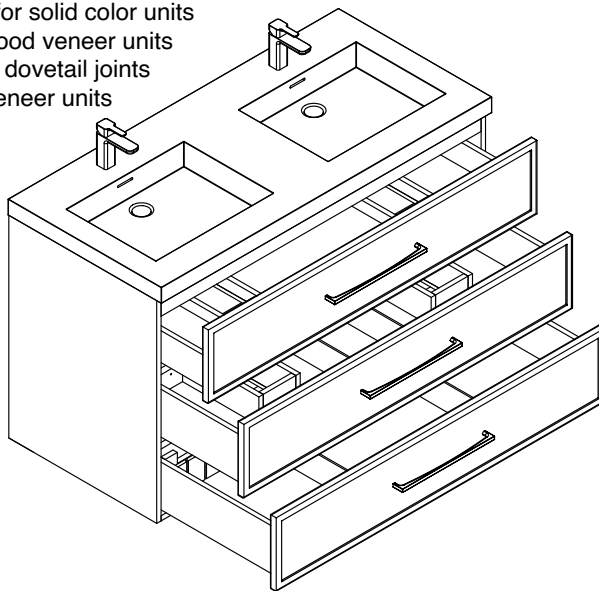
Cabinet Specifications

Features

- Legend-Wall Hung Vanity or Marquis-Free Standing Vanity
- Three fully adjustable drawers with full-extension soft-close European hardware.
- Middle and Bottom drawers include adjustable tempered glass dividers
- Furniture grade plywood or moisture-resistant wood composite construction
- Finished with a sealed, decorative veneer or with premium polyurethane solid color paints
- Handle/Feet finish options: polished chrome (PC), brushed nickel (BN), polished nickel (PN), matte black (MB) and satin brass (SB)
- Feet furnished separately for field installation.

Drawer Boxes

- Matching color for solid color units
- Light grey for wood veneer units
- Solid wood with dovetail joints for decorative veneer units



SIDE VIEW

Top/Basin options

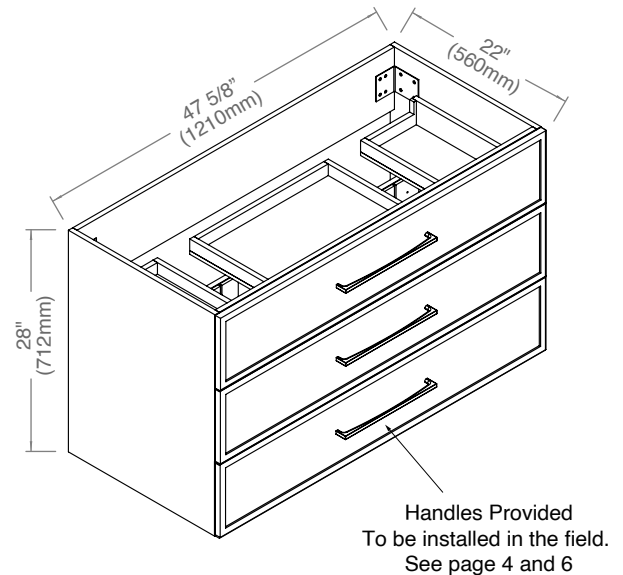
- X-Stone 2"H top/basin
- X-Stone 4-1/2"H Trough sink

Package Dimensions

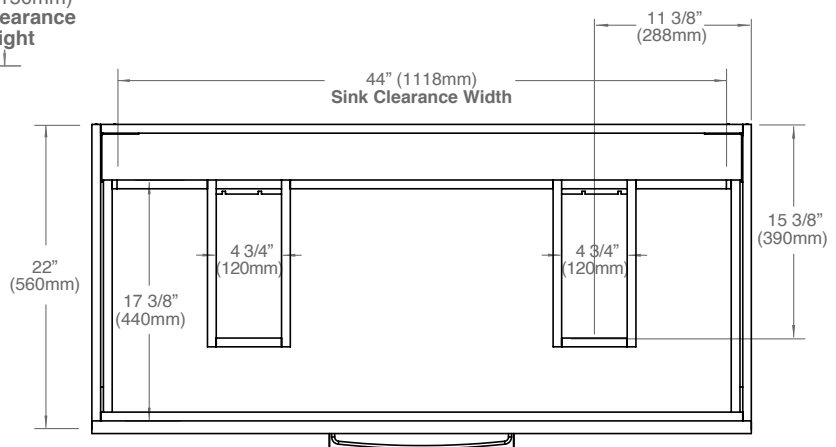
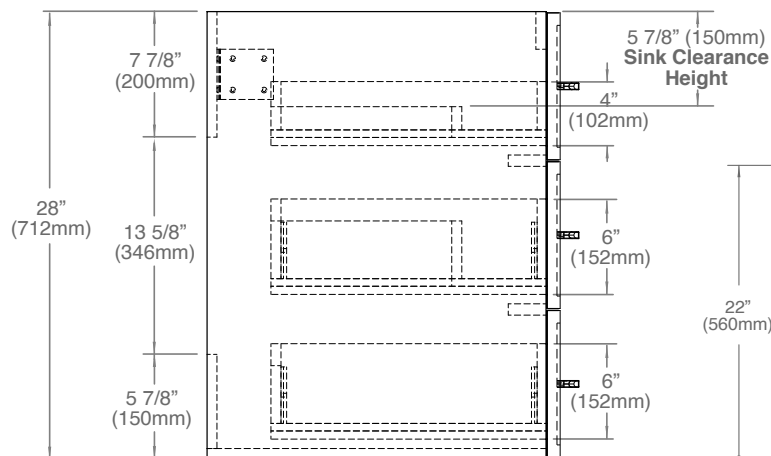
50"(1270mm) x 25"(635) x 31-5/8"(803)

Weight

187 lbs / 85 kgs



TOP VIEW



Legend/Marquis - 60" - Single Bowl

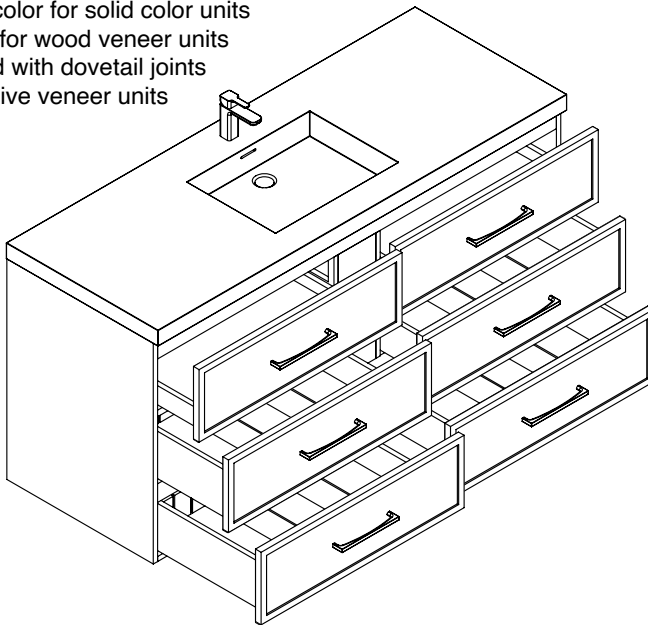
Cabinet Specifications

Features

- Legend-Wall Hung Vanity or Marquis-Free Standing Vanity
- Six fully adjustable drawers with full-extension soft-close European hardware.
- Middle and Bottom drawers include adjustable tempered glass dividers
- Furniture grade plywood or moisture-resistant wood composite construction
- Finished with a sealed, decorative veneer or with premium polyurethane solid color paints
- Handle/Feet finish options: polished chrome (PC), brushed nickel (BN), polished nickel (PN), matte black (MB) and satin brass (SB)
- Feet furnished separately for field installation.

Drawer Boxes

- Matching color for solid color units
- Light grey for wood veneer units
- Solid wood with dovetail joints for decorative veneer units



SIDE VIEW

Top/Basin options

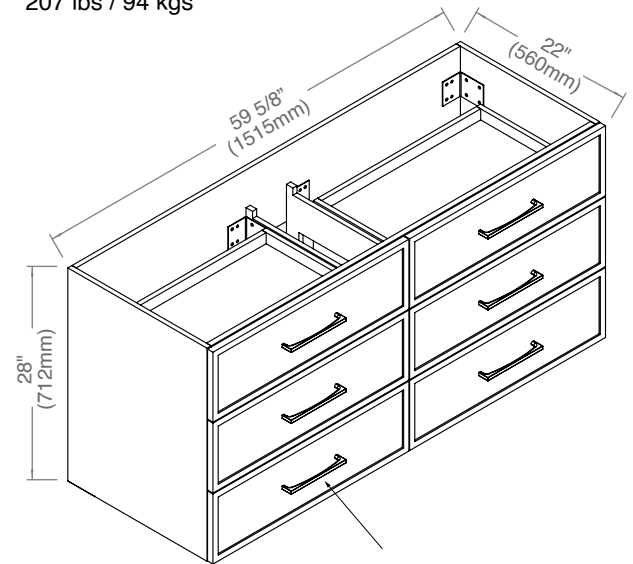
- Ceramic basins
- Glass top/basin
- X-Stone 2"H top/basin
- X-Stone 4-1/2"H Trough sink
- X-Stone 3/4"H countertop with ceramic basin
- Quartzstone 3"H countertop with ceramic basin

Package Dimensions

62"(1275mm) x 25"(635) x 31-5/8"(803)

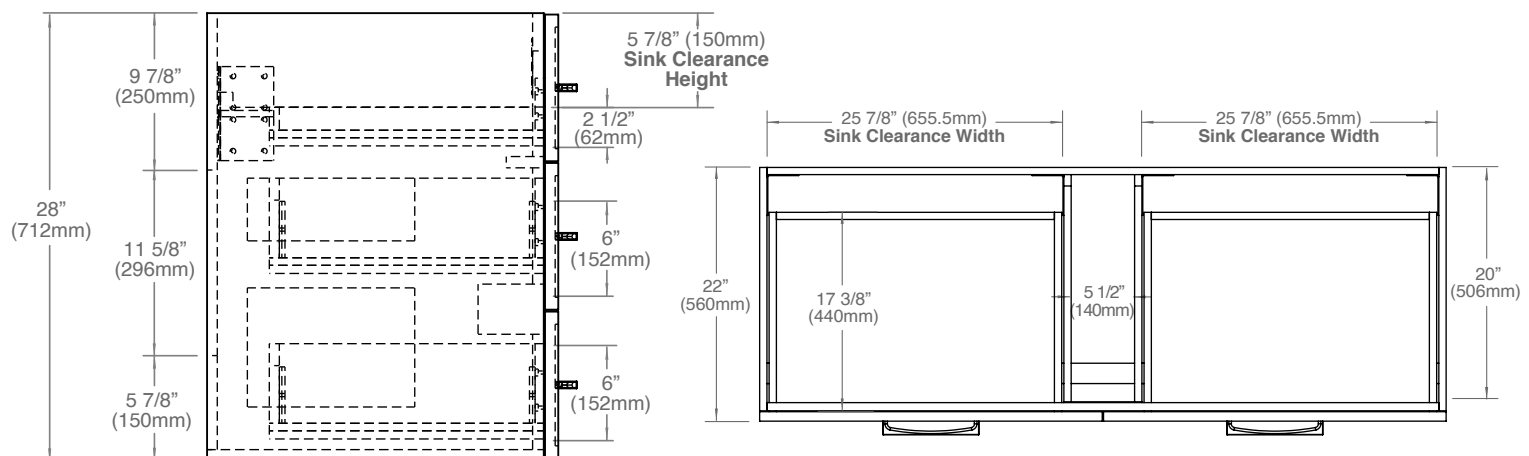
Weight

207 lbs / 94 kgs



Handles Provided
To be installed in the field.
See page 4 and 6

TOP VIEW



Legend/Marquis - 60"/72" - Double Bowl

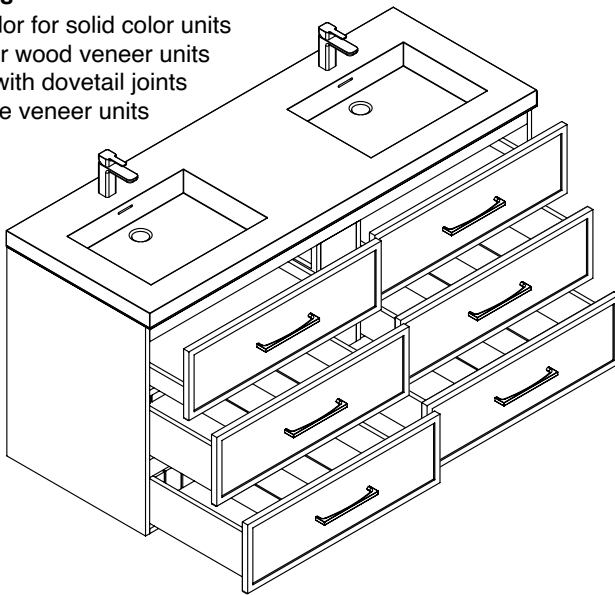
Cabinet Specifications

Features

- Legend-Wall Hung Vanity or Marquis-Free Standing Vanity
- Six fully adjustable drawers with full-extension soft-close European hardware.
- Middle and Bottom drawers include adjustable tempered glass dividers
- Furniture grade plywood or moisture-resistant wood composite construction
- Finished with a sealed, decorative veneer or with premium polyurethane solid color paints
- Handle/Feet finish options: polished chrome (PC), brushed nickel (BN), polished nickel (PN), matte black (MB) and satin brass (SB)
- Feet furnished separately for field installation.

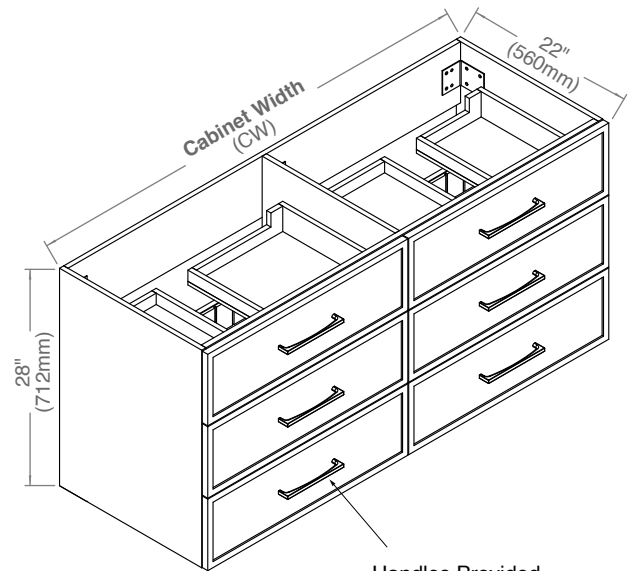
Drawer Boxes

- Matching color for solid color units
- Light grey for wood veneer units
- Solid wood with dovetail joints for decorative veneer units



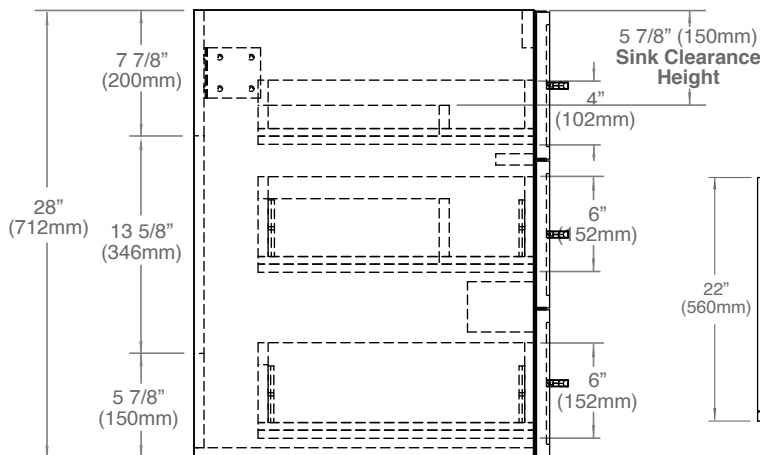
Top/Basin options

- Ceramic basins
- Glass top/basin
- X-Stone 2"H top/basin
- X-Stone 4-1/2"H Trough sink
- Quartzstone 3/4"H countertop with ceramic basin
- Quartzstone 3"H countertop with ceramic basin

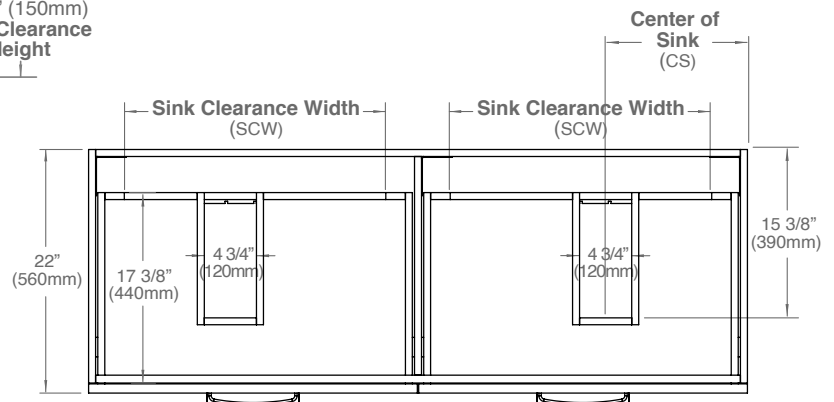


Handles Provided
To be installed in the field.
See page 4 and 6

SIDE VIEW



TOP VIEW



MODEL	CW	SCW	CS	Package Dimensions	Weight
B825/B835-60D-00X-XX	59 5/8" (1515mm)	23 5/8" (602mm)	12 7/8" (326mm)	62"(1575)x25"(635)x31-5/8"(803)	207 lbs / 94 Kgs
B825/B835-72D-00X-XX	71 5/8" (1820mm)	29 5/8" (754mm)	14 3/8" (365mm)	74"(1880)x25"(635)x31-5/8"(803)	233 lbs / 106 Kgs

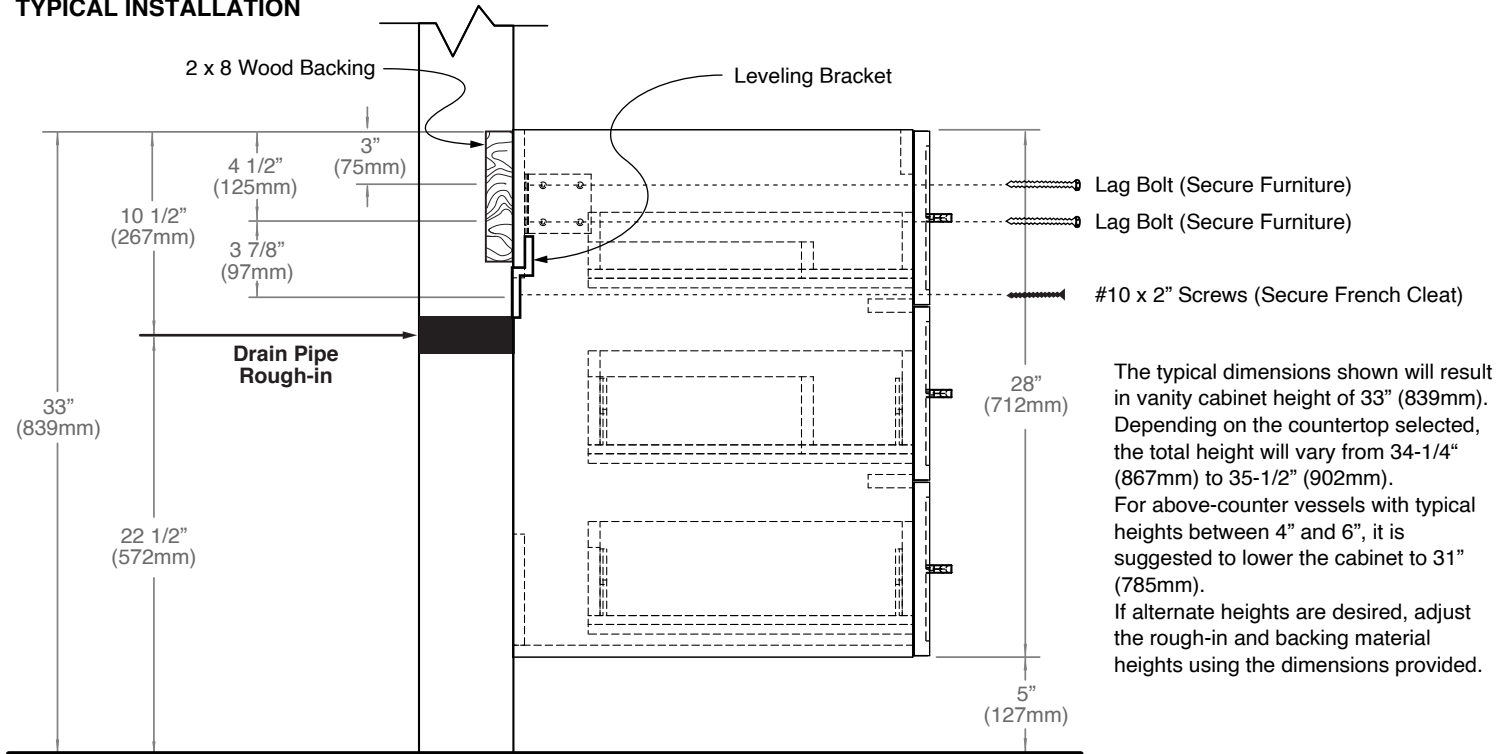
For clarification, please contact Madeli Customer Care at (800) 819-6988 Ext.1 or service@madeli.com
All dimensions are approximate and subject to standard tolerance. Specifications subject to change without prior notice.

05 | Page

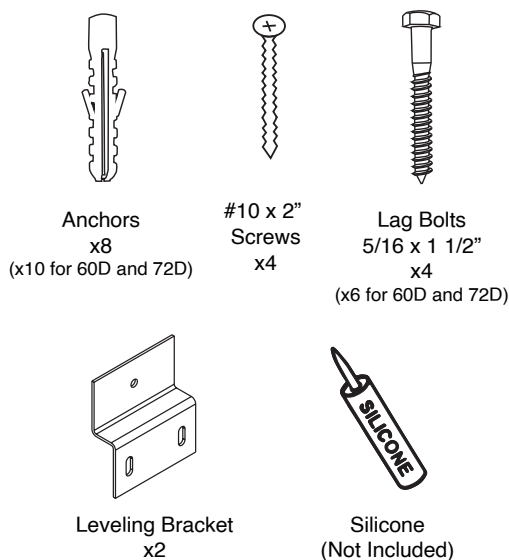
Legend - WALL HUNG VANITY

Installation Guide

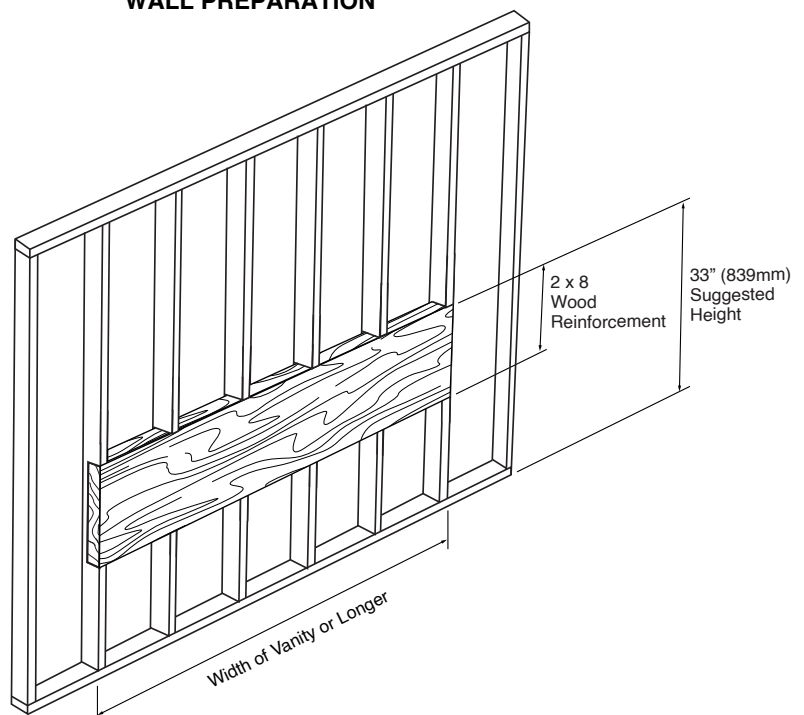
TYPICAL INSTALLATION



ACCESSORIES FOR INSTALLATION



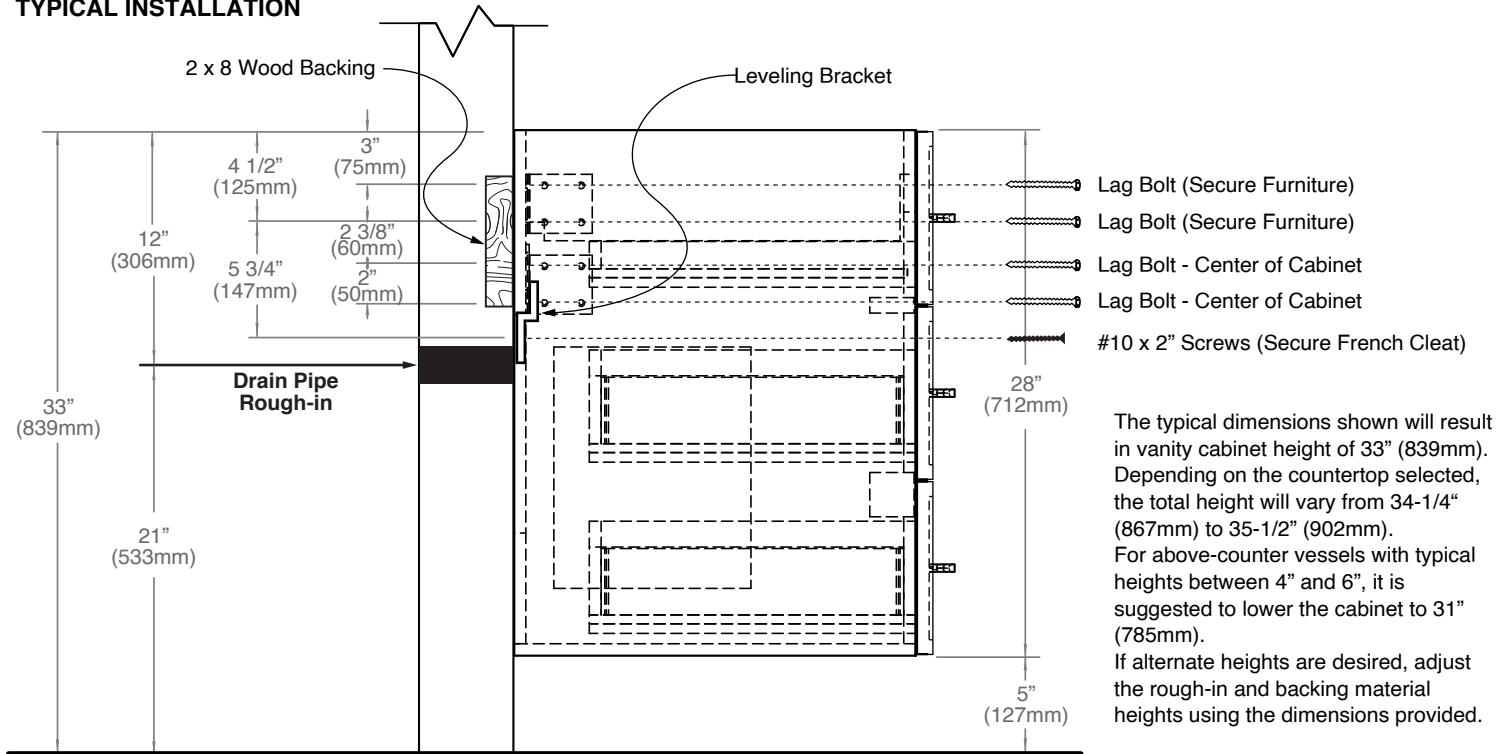
WALL PREPARATION



Legend - WALL HUNG VANITY

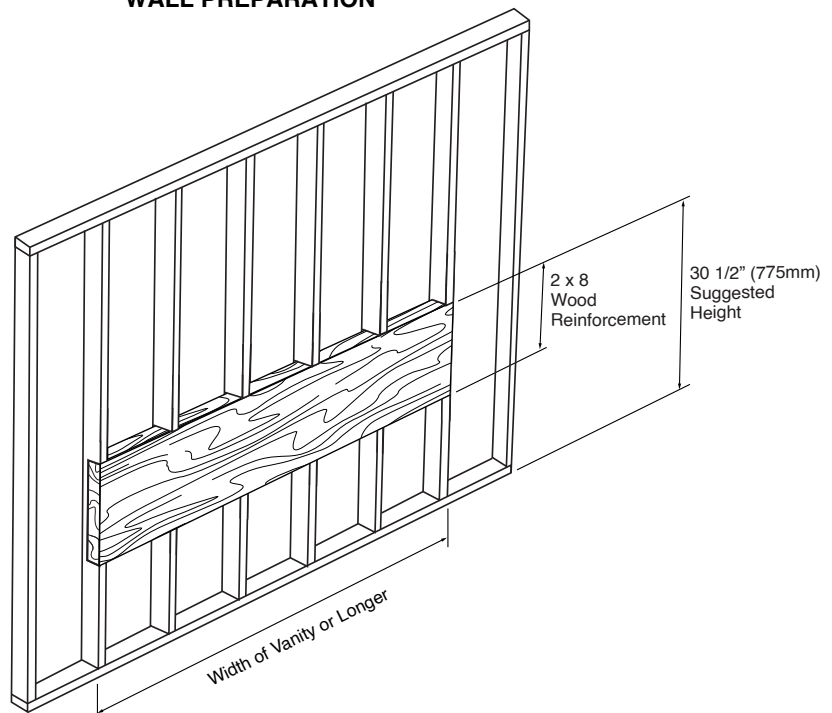
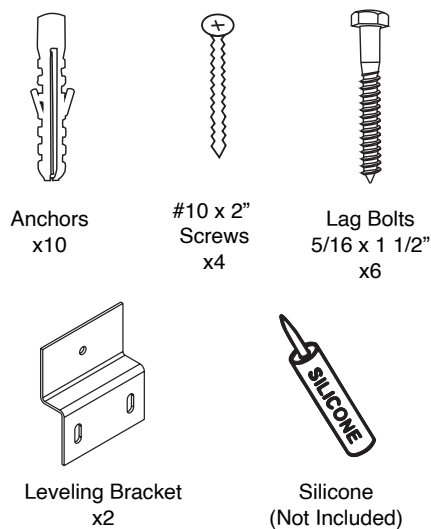
Installation Guide

TYPICAL INSTALLATION



ACCESSORIES FOR INSTALLATION

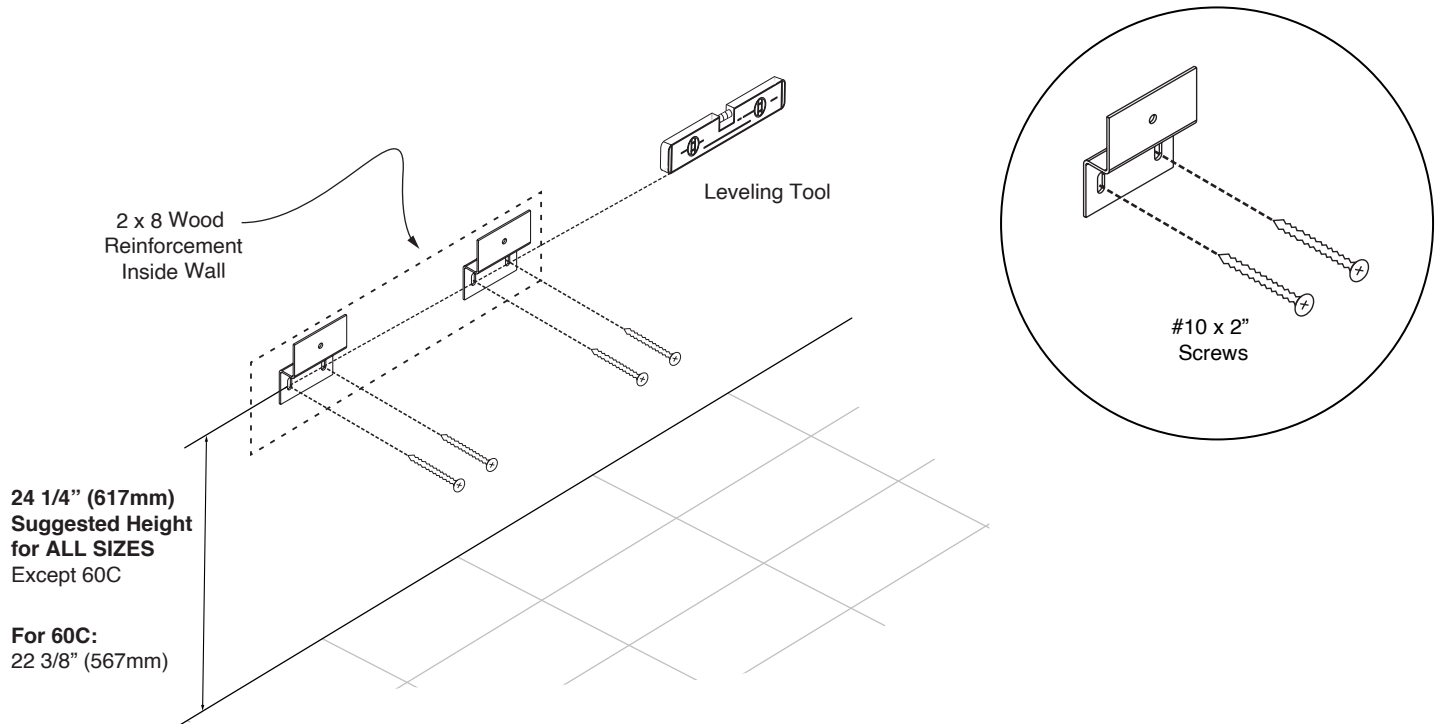
WALL PREPARATION



Legend - WALL HUNG VANITY

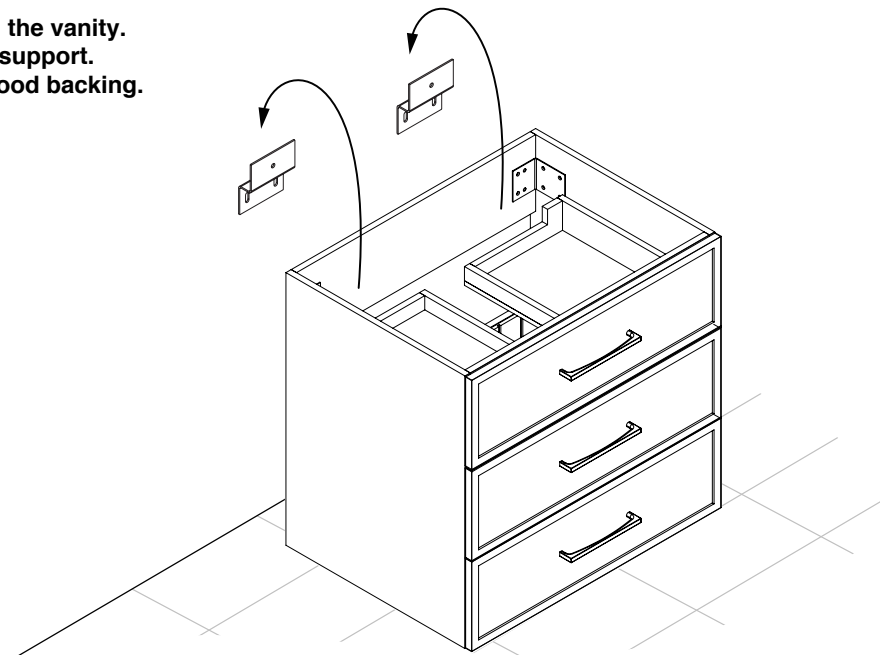
Installation Guide

STEP 1: Install leveling brackets



STEP 2: Place vanity on leveling bracket.

The leveling brackets are only to level the vanity.
They are not designed for permanent support.
The cabinet needs to be secured to wood backing.



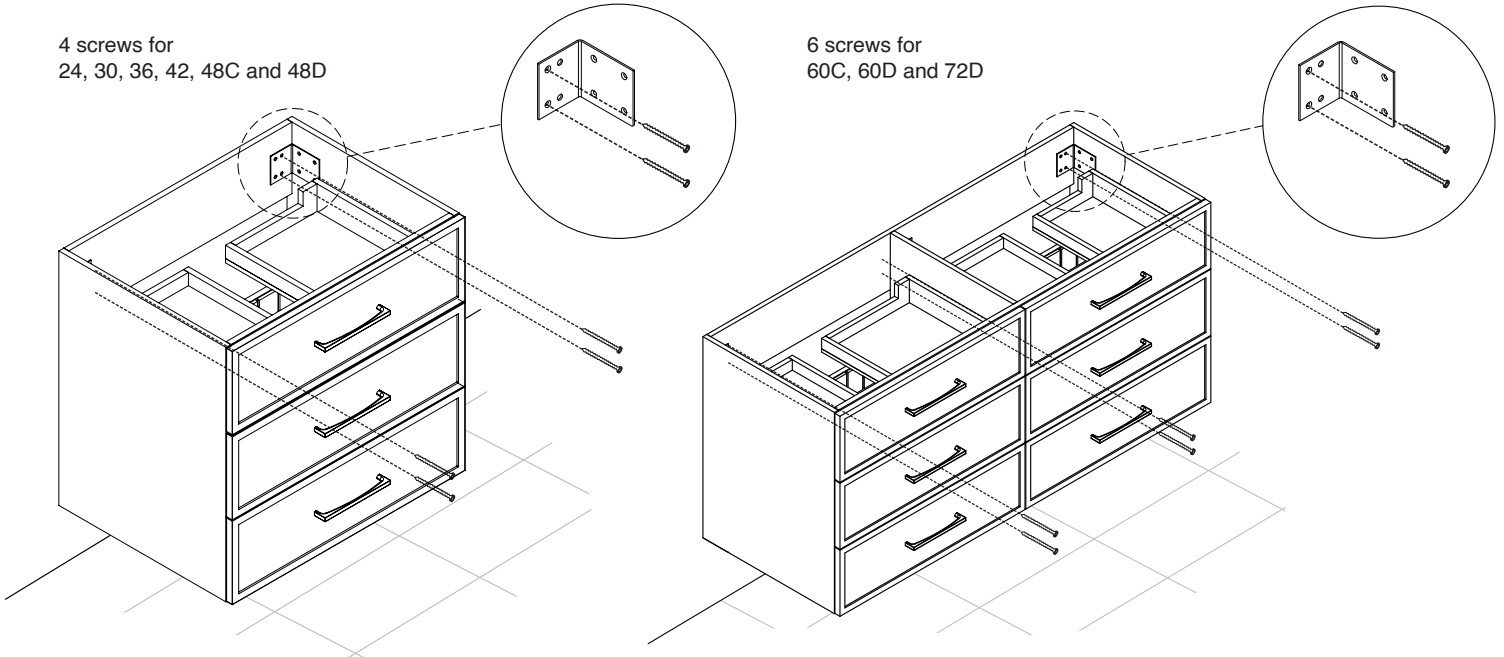
Legend - WALL HUNG VANITY

Installation Guide

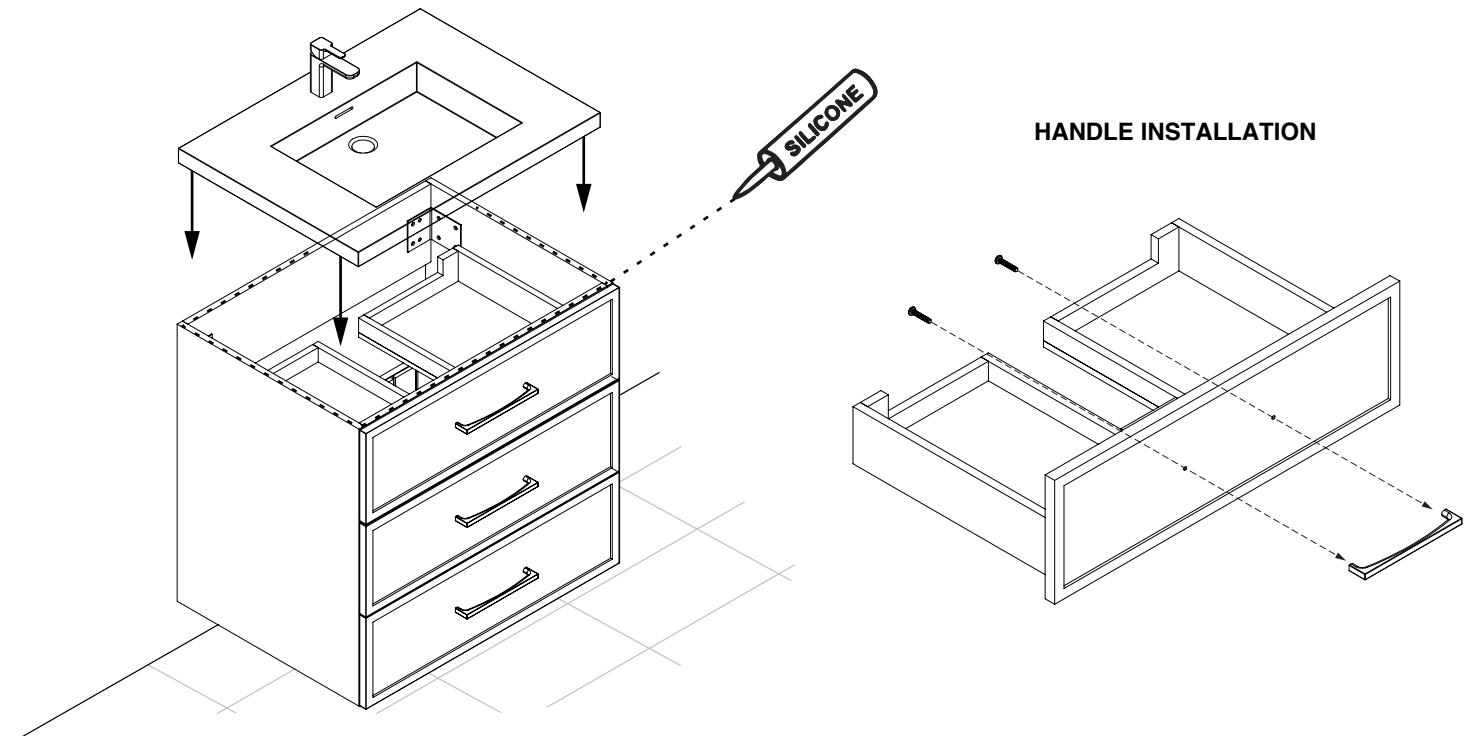
STEP 3: Secure vanity to wood reinforcement backing.

4 screws for
24, 30, 36, 42, 48C and 48D

6 screws for
60C, 60D and 72D



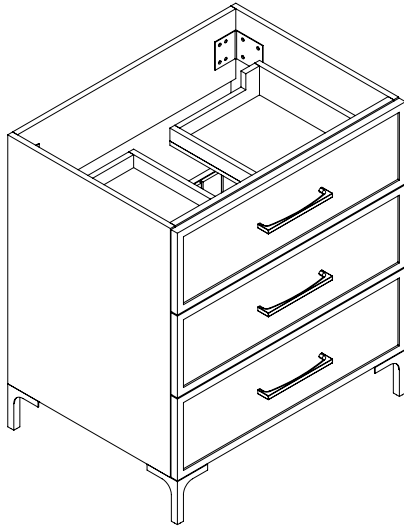
STEP 4: Install countertop with silicone and handles as shown below.



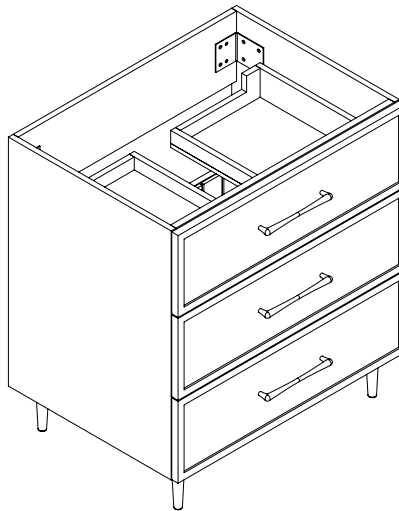
Marquis - FREE STANDING VANITY

Feet/Base Installation

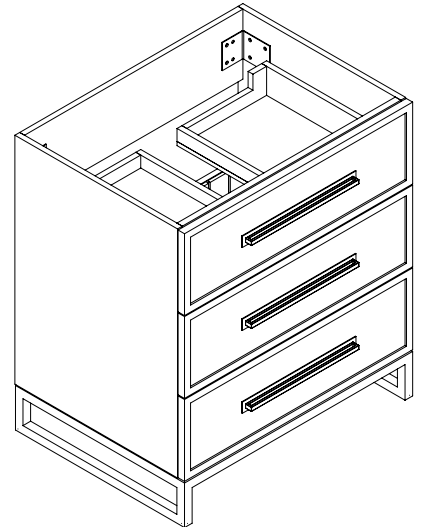
Y-FEET



R-FEET



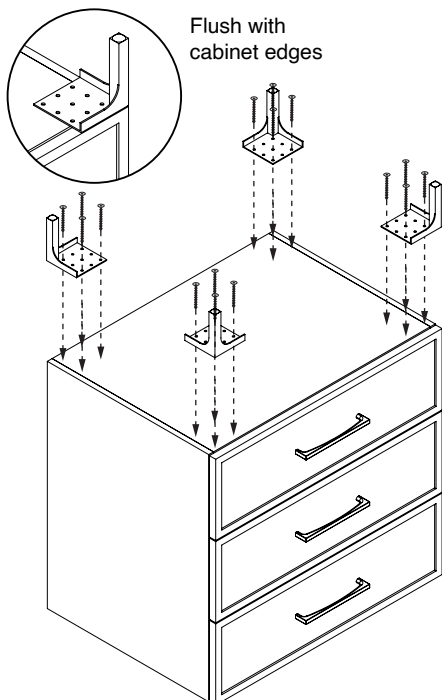
C-BASE



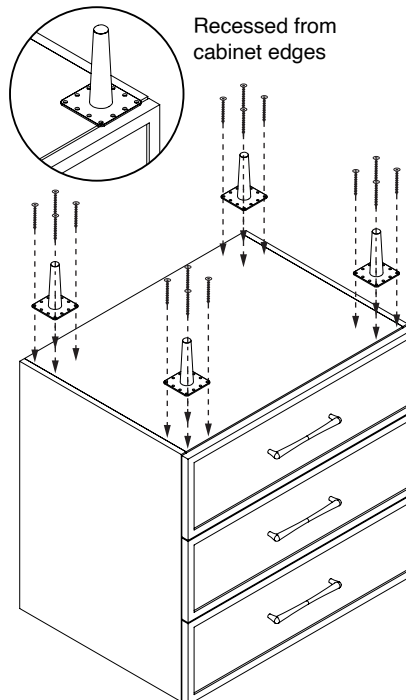
FEET/BASE INSTALLATION

1. Flip cabinet in the upside down position.
 2. Mark screw locations using legs/base as template.
 3. Pre-drill holes with 5/64", 3/32" or 7/64" drill bit about 1/2" deep.
 4. Using provided screws, fix legs/base to cabinet as shown below.
- If using a regular battery drill, set clutch to minimum and increase setting as needed.
DO NOT OVER TIGHTEN THE SCREWS. DOING SO WILL SPLIT THE WOOD SIDE PANEL.

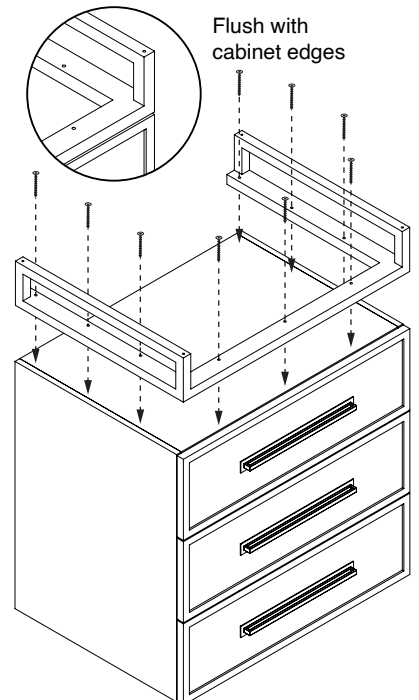
Y-FEET INSTALLATION



R-FEET INSTALLATION



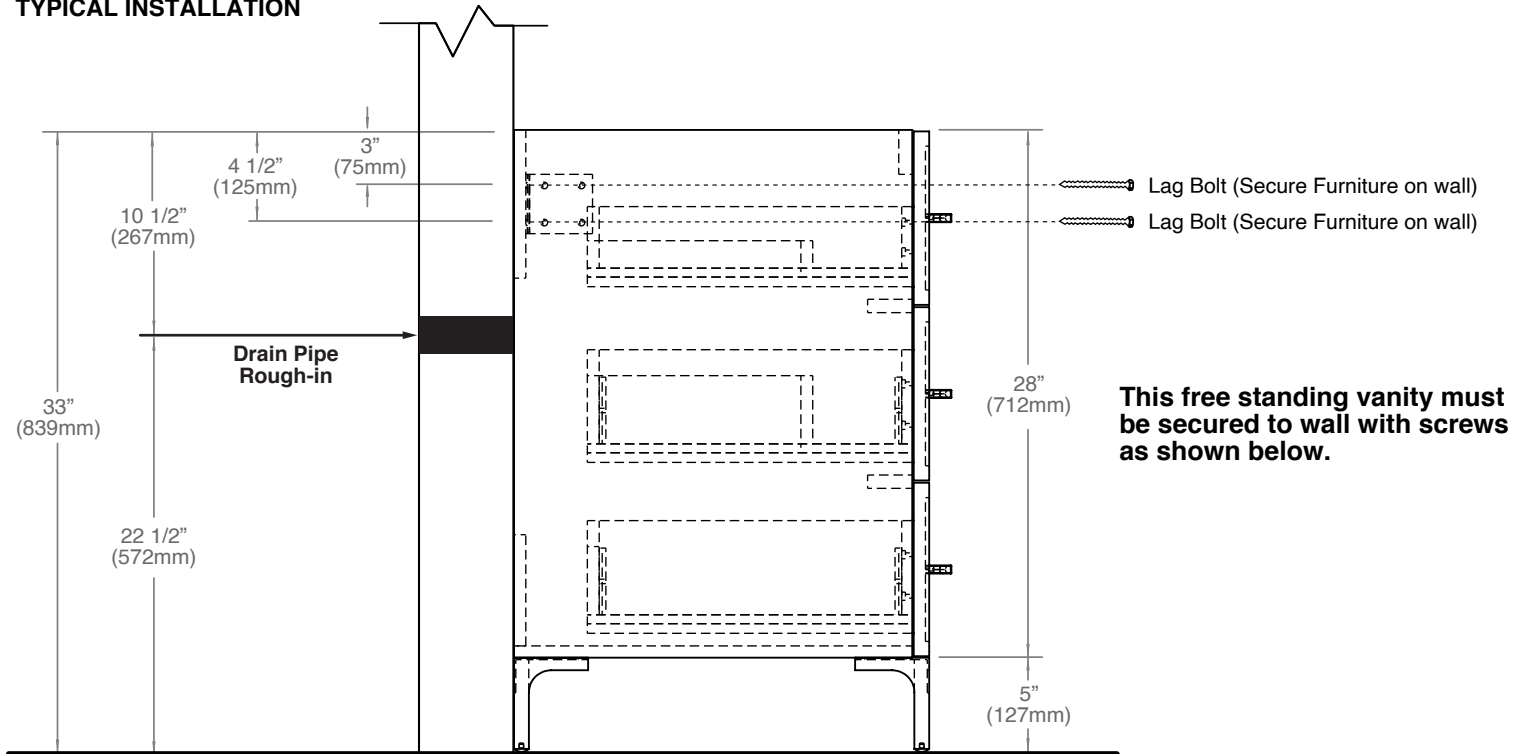
C-BASE INSTALLATION



Marquis - FREE STANDING VANITY

Feet/Base Installation

TYPICAL INSTALLATION

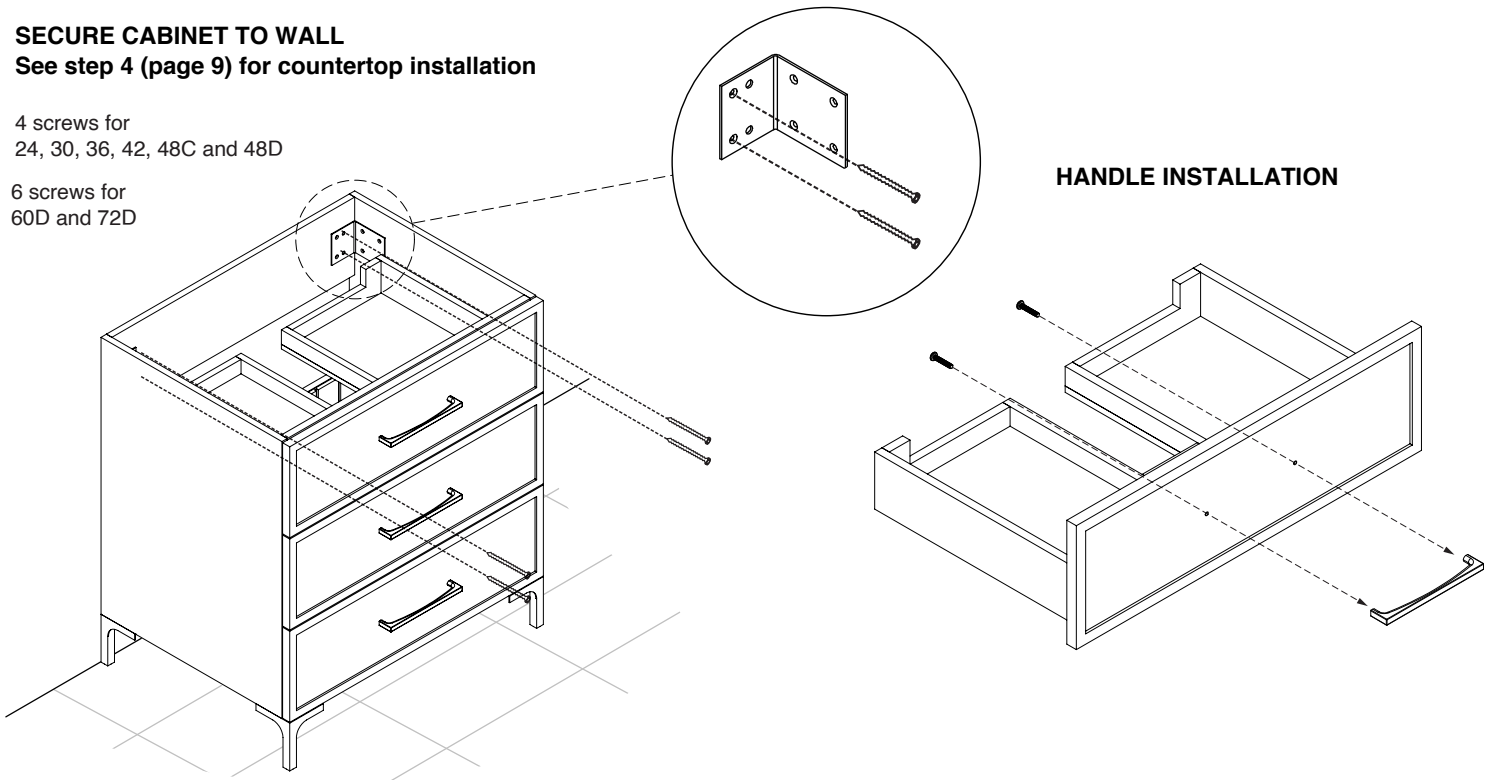


SECURE CABINET TO WALL

See step 4 (page 9) for countertop installation

4 screws for
24, 30, 36, 42, 48C and 48D

6 screws for
60D and 72D



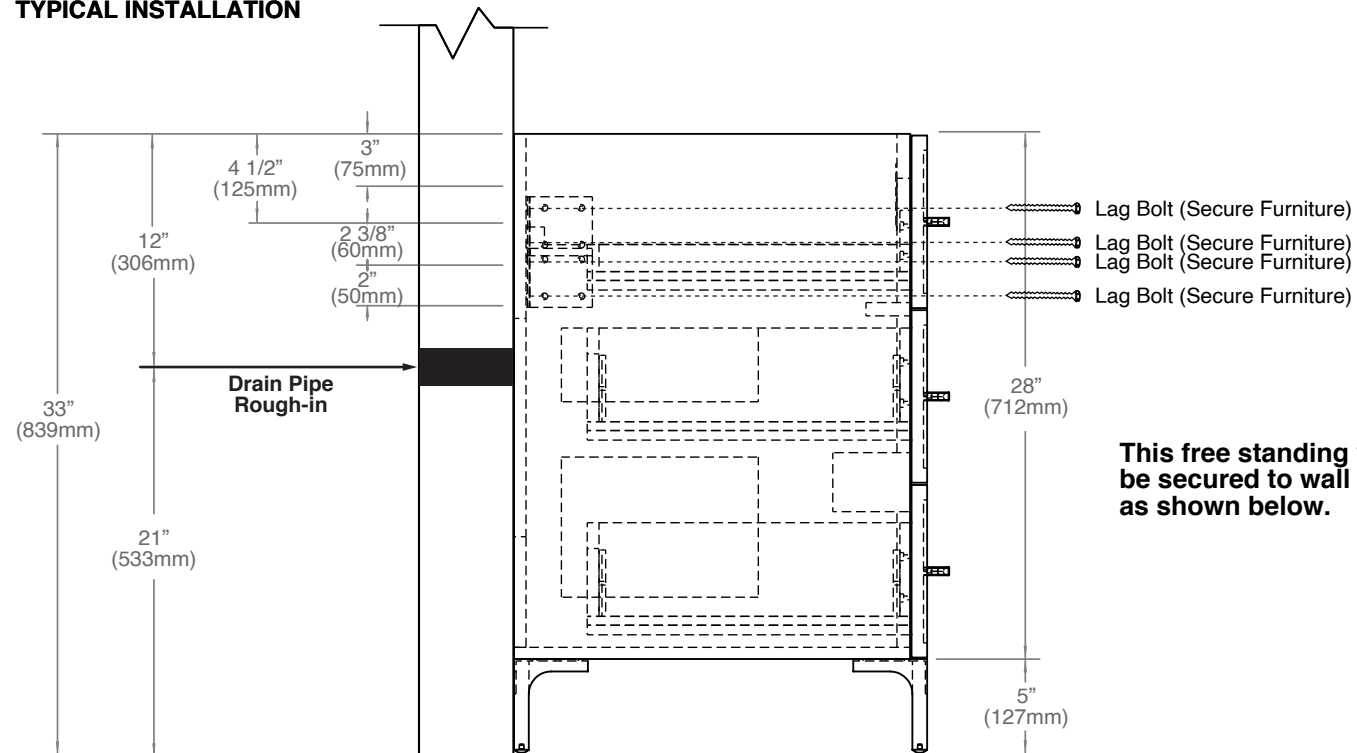
For clarification, please contact Madeli Customer Care at (800) 819-6988 Ext.1 or service@madeli.com

All dimensions are approximate and subject to standard tolerance. Specifications subject to change without prior notice.

Marquis - FREE STANDING VANITY

Feet/Base Installation

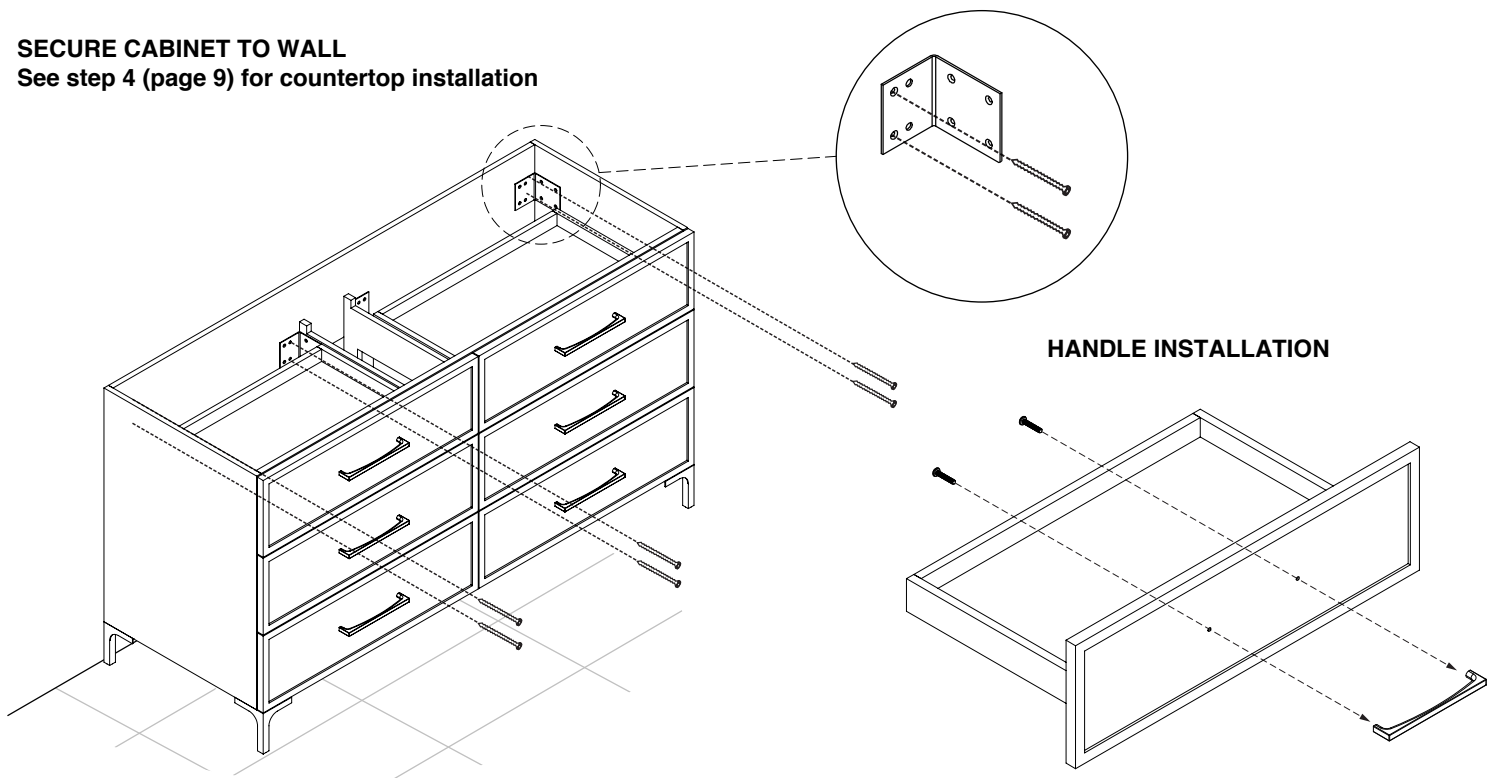
TYPICAL INSTALLATION



This free standing vanity must be secured to wall with screws as shown below.

SECURE CABINET TO WALL

See step 4 (page 9) for countertop installation



For clarification, please contact Madeli Customer Care at (800) 819-6988 Ext.1 or service@madeli.com
All dimensions are approximate and subject to standard tolerance. Specifications subject to change without prior notice.