

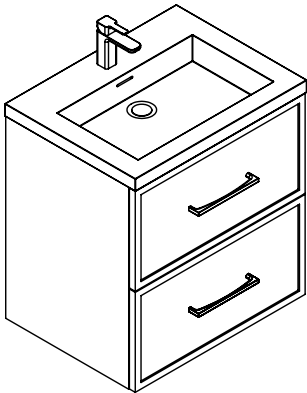
Specifications and Installation Guide

B305-Apex

Wall Hung Vanity Collection

Models

- B305-24-002-XX
 - B305-30-002-XX
 - B305-36-002-XX
 - B305-42-002-XX
 - B305-48C-002-XX
- B305-48D-002-XX
 - B305-60C-002-XX
 - B305-60D-002-XX
 - B305-72D-002-XX



B405-Peak

Free Standing Vanity Collection

- B405-24-001-XX
 - B405-30-001-XX
 - B405-36-001-XX
 - B405-42-001-XX
 - B405-48C-001-XX
- B405-48D-001-XX
 - B405-60C-001-XX
 - B405-60D-001-XX
 - B405-72D-001-XX

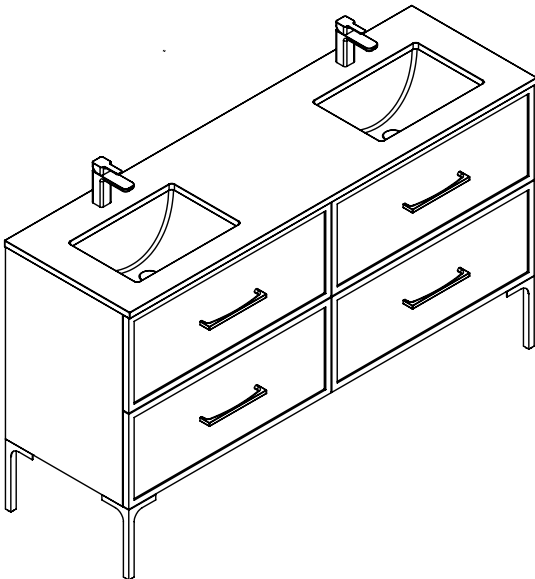


Table of Contents

	Page / Page
Specifications 24/30/36/42/48C.....	2
Specifications 48D.....	3
Specifications 60C.....	4
Specifications 60D/72D.....	5
Typical Installation: Wall Hung /B305-Urban.....	6-7
Installation Steps: Wall Hung /B305-Urban.....	8-9
Feet/Base Installation: Free Standing /B405-Soho.....	10
Typical Installation: Free Standing /B405-Soho.....	11-12

For clarification, please contact Madeli Customer Care at (800) 819-6988 Ext.1 or service@madeli.com
Pour plus de précisions, veuillez contacter le service client Madeli au (800) 819-6988 Ext.1 ou service@madeli.com

Apex/Peak - 24"/30"/36"/42"/48" - Single Bowl

Cabinet Specifications

Features

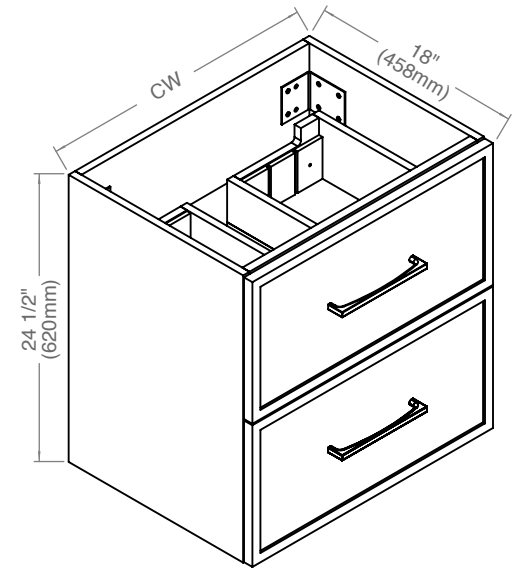
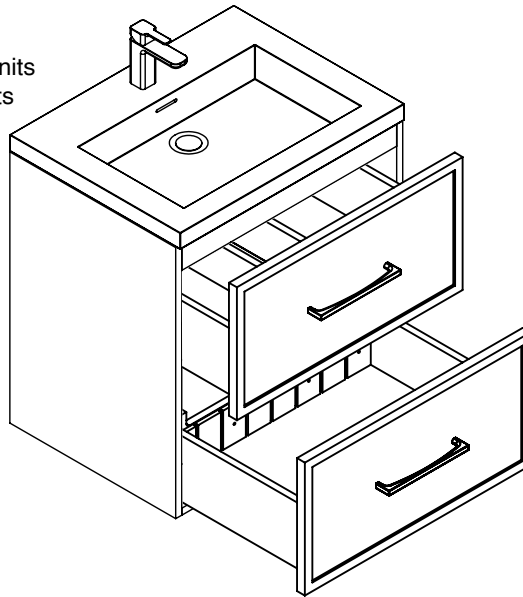
- Apex-Wall Hung Vanity or Peak-Free Standing Vanity
- Two fully adjustable drawers with full-extension soft-close European hardware.
- Top and Bottom drawers include adjustable tempered glass dividers
- Furniture grade plywood or moisture-resistant wood composite construction
- Finished with a sealed, decorative veneer or with premium polyurethane solid color paints
- Handle/Feet finish options: polished chrome (PC), brushed nickel (BN), polished nickel (PN), matte black (MB) and satin brass (SB)
- Feet furnished separately for field installation.

Drawer Boxes

- Matching color for solid color units
- Light grey for wood veneer units
- Solid wood with dovetail joints for decorative veneer units

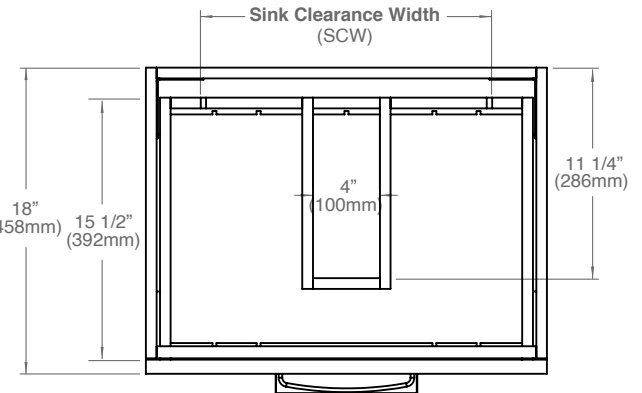
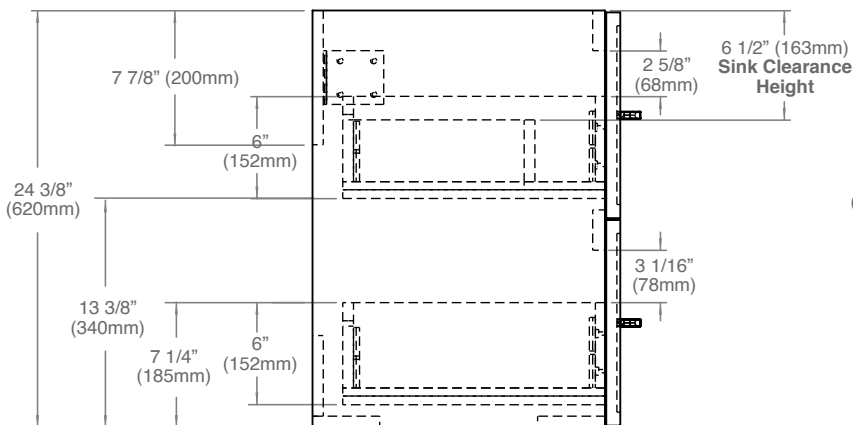
Top/Basin options

- Ceramic basins
- Glass top/basin
- X-Stone 1-1/2"H top/basin
- X-Stone 4-1/2"H Trough sink
- Quartzstone 3/4"H countertop with ceramic basin



SIDE VIEW

TOP VIEW



MODEL	CW	SCW	Package Dimensions	Weight
B305/B405-24-00X-XX	23 5/8" (600mm)	17 1/8" (436mm)	26"(660)x21"(533)x28"(711)	75 lbs / 34 Kgs
B305/B405-30-00X-XX	29 5/8" (753mm)	23 1/4" (589mm)	32"(813)x21"(533)x28"(711)	84 lbs / 38 Kgs
B305/B405-36-00X-XX	35 5/8" (905mm)	29 1/8" (741mm)	38"(965)x21"(533)x28"(711)	95 lbs / 43 Kgs
B305/B405-42-00X-XX	41 5/8" (1058mm)	35 1/4" (894mm)	44"(1118)x21"(533)x28"(711)	111 lbs / 51 Kgs
B305/B405-48C-00X-XX	47 5/8" (1210mm)	41 1/8" (1046mm)	50"(1270)x21"(533)x28"(711)	127 lbs / 58 Kgs

For clarification, please contact Madeli Customer Care at (800) 819-6988 Ext.1 or service@madeli.com
 All dimensions are approximate and subject to standard tolerance. Specifications subject to change without prior notice.

02 | Page

Apex/Peak - 48" - Double Bowl

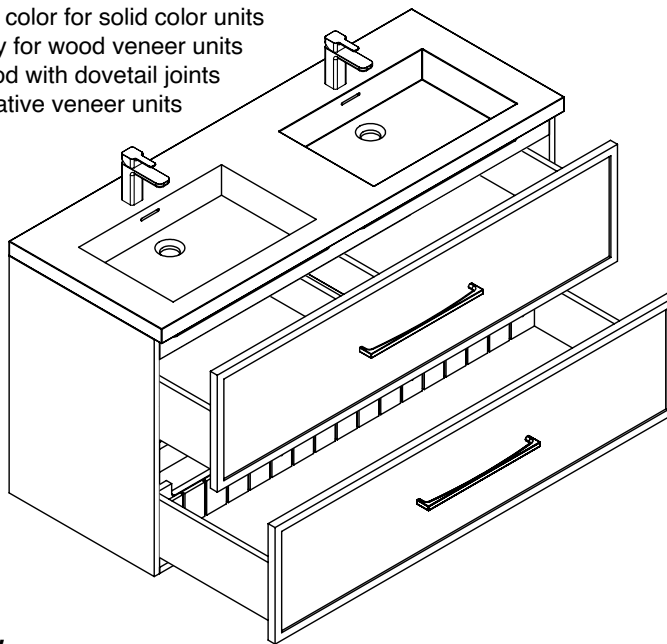
Cabinet Specifications

Features

- Apex-Wall Hung Vanity or Peak-Free Standing Vanity
- Two fully adjustable drawers with full-extension soft-close European hardware.
- Top and Bottom drawers include adjustable tempered glass dividers
- Furniture grade plywood or moisture-resistant wood composite construction
- Finished with a sealed, decorative veneer or with premium polyurethane solid color paints
- Handle/Feet finish options: polished chrome (PC), brushed nickel (BN), polished nickel (PN), matte black (MB) and satin brass (SB)
- Feet furnished separately for field installation.

Drawer Boxes

- Matching color for solid color units
- Light grey for wood veneer units
- Solid wood with dovetail joints for decorative veneer units



SIDE VIEW

Top/Basin options

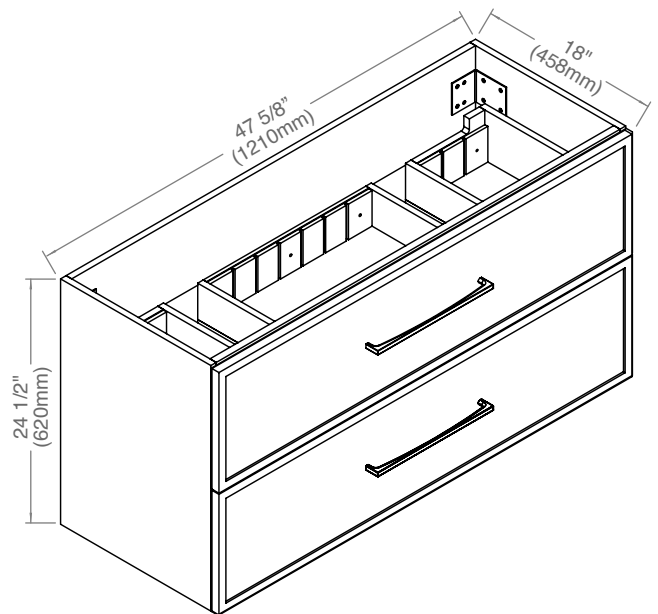
- Ceramic basins
- Glass top/basin
- X-Stone 1-1/2"H top/basin
- X-Stone 4-1/2"H Trough sink
- Quartzstone 3/4"H countertop with ceramic basin

Package Dimensions

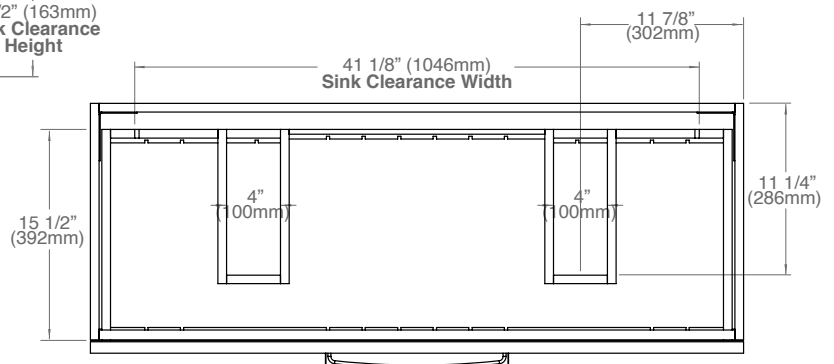
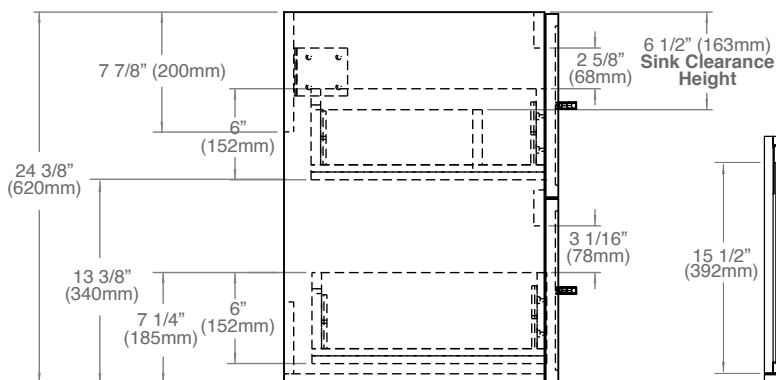
50"(1270mm) x 21"(533mm) x 28"(711mm)

Weight

127 lbs / 58 kg



TOP VIEW



For clarification, please contact Madeli Customer Care at (800) 819-6988 Ext.1 or service@madeli.com

All dimensions are approximate and subject to standard tolerance. Specifications subject to change without prior notice.

03 | Page

Cabinet Specifications

- Apex-Wall Hung Vanity or Peak-Free Standing Vanity
- Four fully adjustable drawers with full-extension soft-close European hardware.
- Top and Bottom drawers include adjustable tempered glass dividers
- Furniture grade plywood or moisture-resistant wood composite construction
- Finished with a sealed, decorative veneer or with premium polyurethane solid color paints
- Handle/Feet finish options: polished chrome (PC), brushed nickel (BN), polished nickel (PN), matte black (MB) and satin brass (SB)
- Feet furnished separately for field installation.

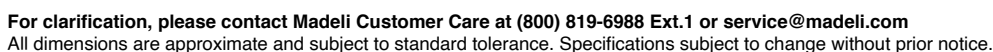
- Matching color for solid color units
- Light grey for wood veneer units
- Solid wood with dovetail joints for decorative veneer units



- Ceramic basins
- Glass top/basin
- X-Stone 1-1/2"H top/basin
- Quartzstone 3/4"H countertop with ceramic basin

63"(1600mm) x 21"(533mm) x 28"(711mm)

168 lbs / 76 kgs



Apex/Peak - 60"/72" - Double Bowl

Cabinet Specifications

Features

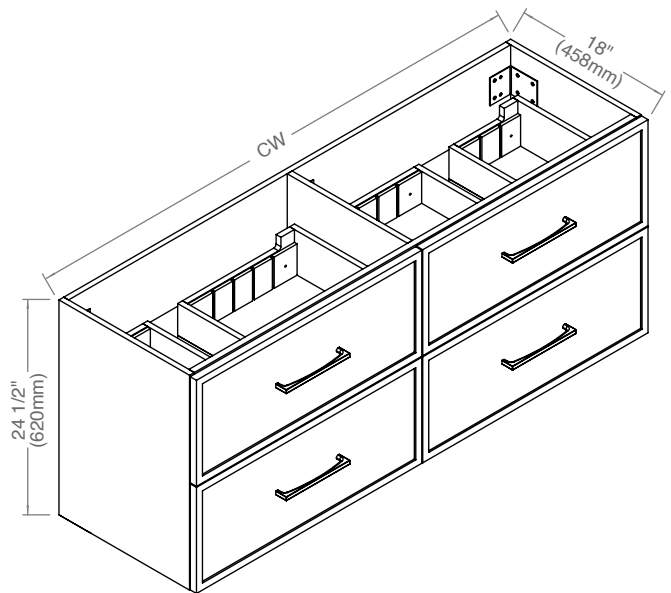
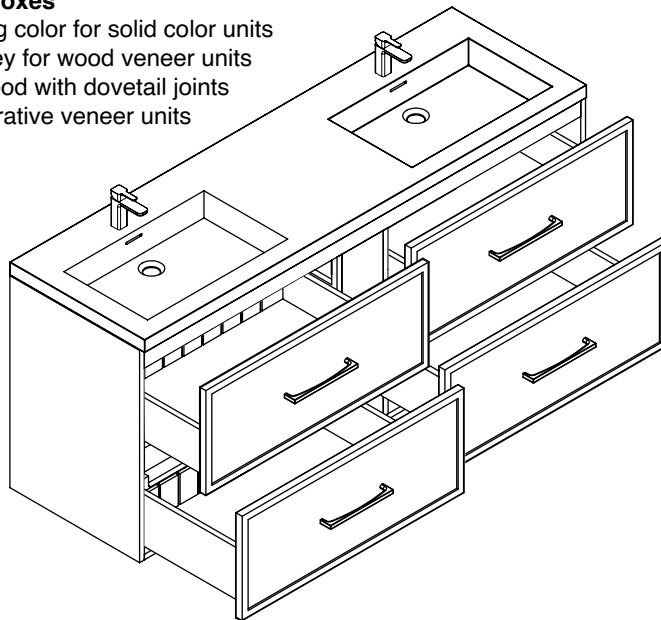
- Apex-Wall Hung Vanity or Peak-Free Standing Vanity
- Four fully adjustable drawers with full-extension soft-close European hardware.
- Top and Bottom drawers include adjustable tempered glass dividers
- Furniture grade plywood or moisture-resistant wood composite construction
- Finished with a sealed, decorative veneer or with premium polyurethane solid color paints
- Handle/Feet finish options: polished chrome (PC), brushed nickel (BN), polished nickel (PN), matte black (MB) and satin brass (SB)
- Feet furnished separately for field installation.

Drawer Boxes

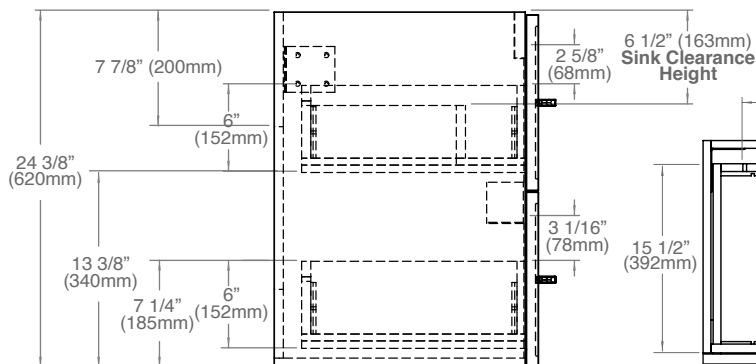
- Matching color for solid color units
- Light grey for wood veneer units
- Solid wood with dovetail joints for decorative veneer units

Top/Basin options

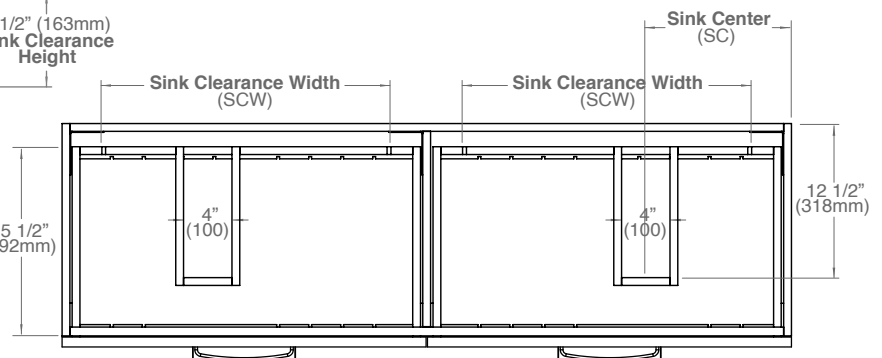
- Ceramic basins
- Glass top/basin
- X-Stone 1-1/2"H top/basin
- X-Stone 4-1/2"H Trough sink
- Quartzstone 3/4"H countertop with ceramic basin



SIDE VIEW



TOP VIEW



MODEL	CW	SCW	SC	Package Dimensions	Weight
B305/B405-60D-00X-XX	59 1/4" (1505mm)	23 1/2" (596.5mm)	11 7/8" (300.5mm)	63" x 21" x 28"	168 lbs / 76 kgs
B305/B405-72D-00X-XX	71 1/16" (1805mm)	29 3/8" (746.5mm)	11" (278mm)	73" x 21" x 28"	183 lbs / 83 kgs

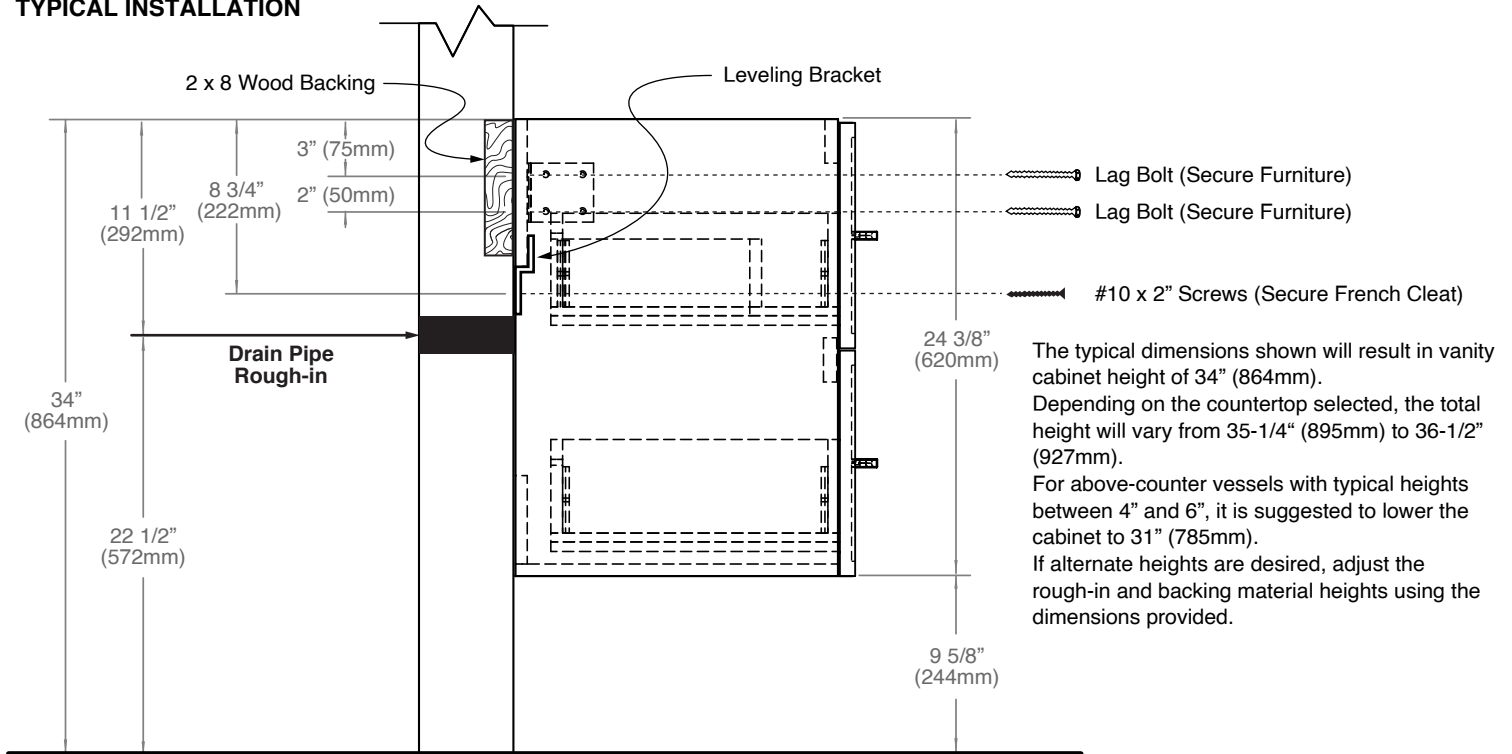
For clarification, please contact Madeli Customer Care at (800) 819-6988 Ext.1 or service@madeli.com
All dimensions are approximate and subject to standard tolerance. Specifications subject to change without prior notice.

05 | Page

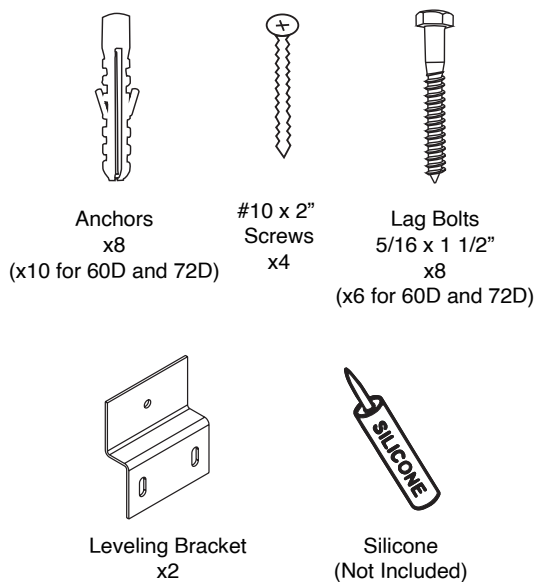
Apex - WALL HUNG VANITY

Cabinet Specifications

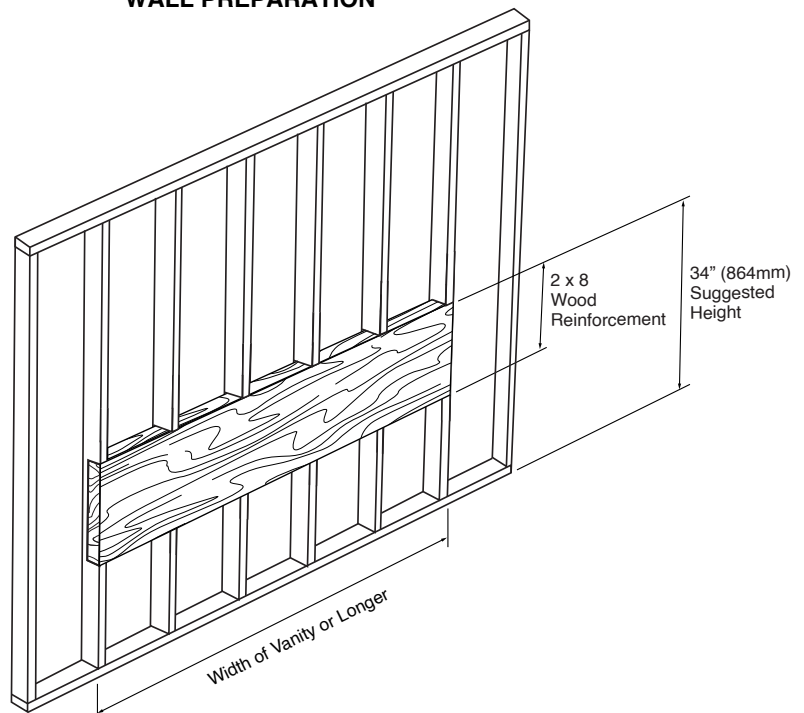
TYPICAL INSTALLATION



ACCESSORIES FOR INSTALLATION



WALL PREPARATION



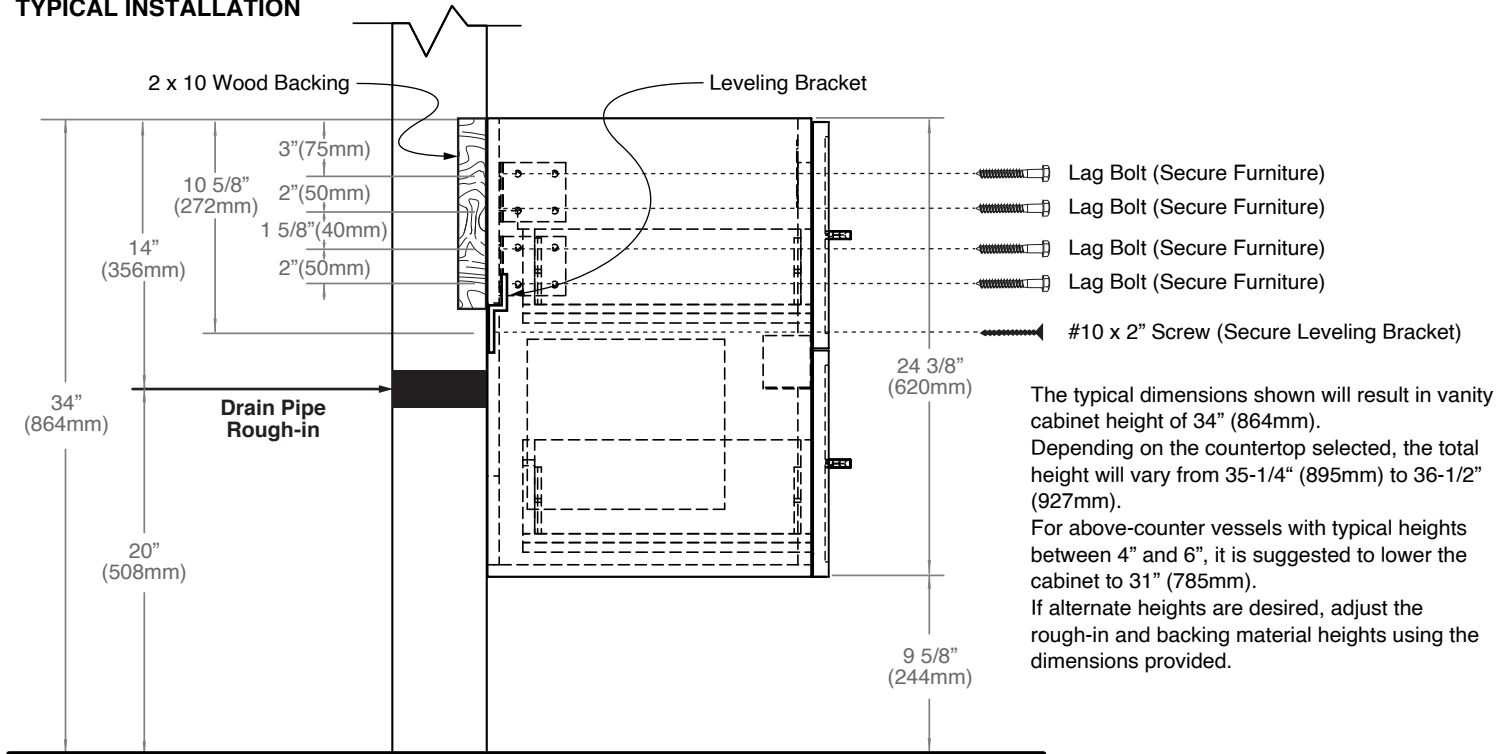
For clarification, please contact Madeli Customer Care at (800) 819-6988 Ext.1 or service@madeli.com

All dimensions are approximate and subject to standard tolerance. Specifications subject to change without prior notice.

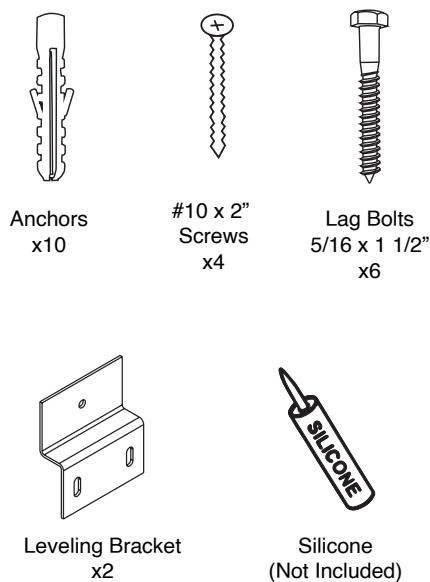
Apex - WALL HUNG VANITY

Cabinet Specifications

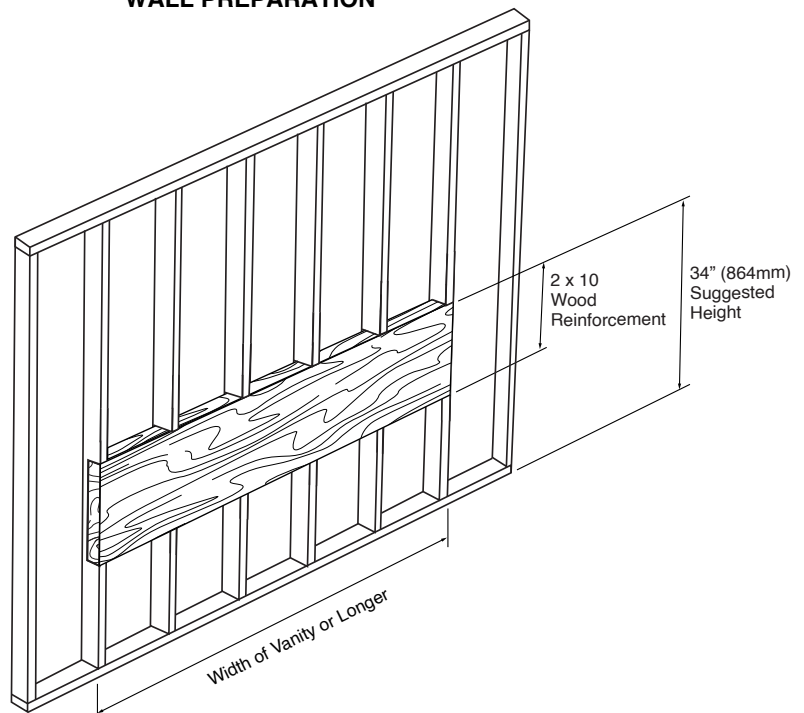
TYPICAL INSTALLATION



ACCESSORIES FOR INSTALLATION



WALL PREPARATION

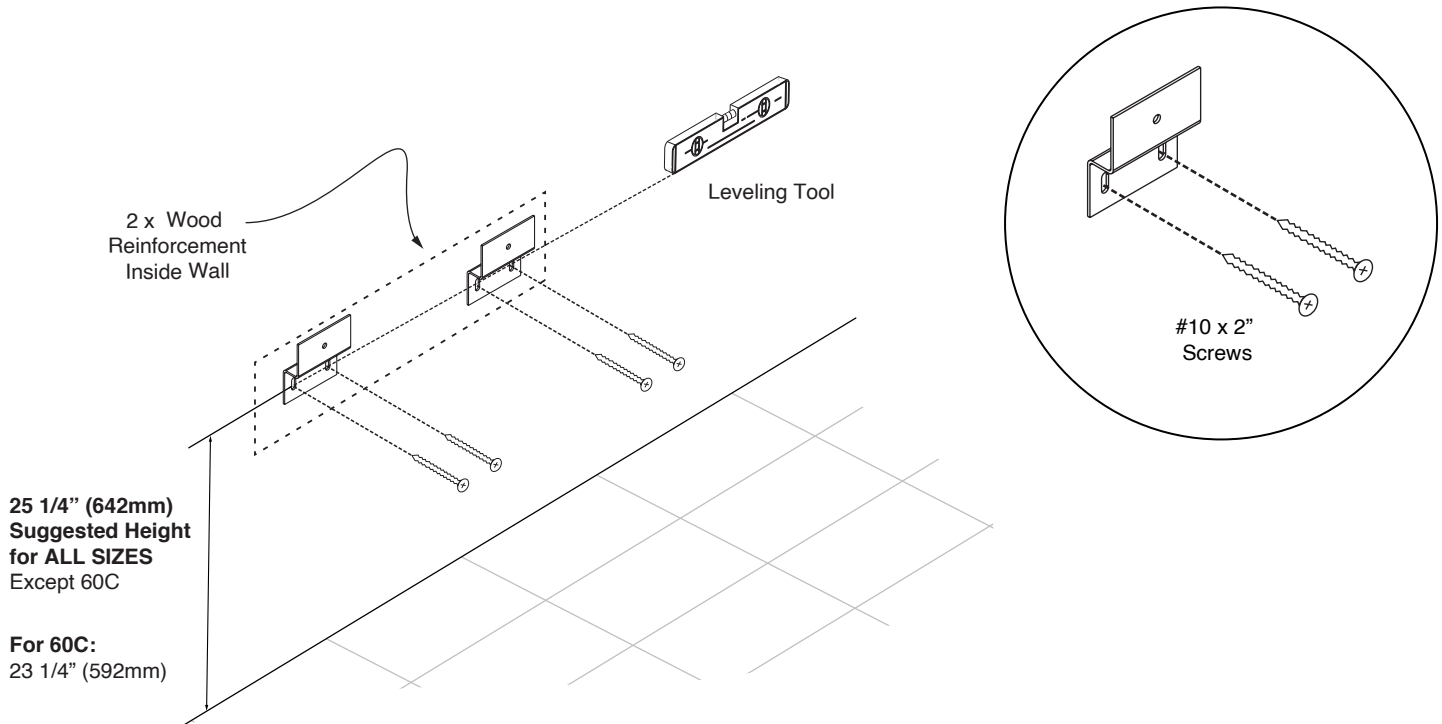


For clarification, please contact Madeli Customer Care at (800) 819-6988 Ext.1 or service@madeli.com
All dimensions are approximate and subject to standard tolerance. Specifications subject to change without prior notice.

Apex - WALL HUNG VANITY

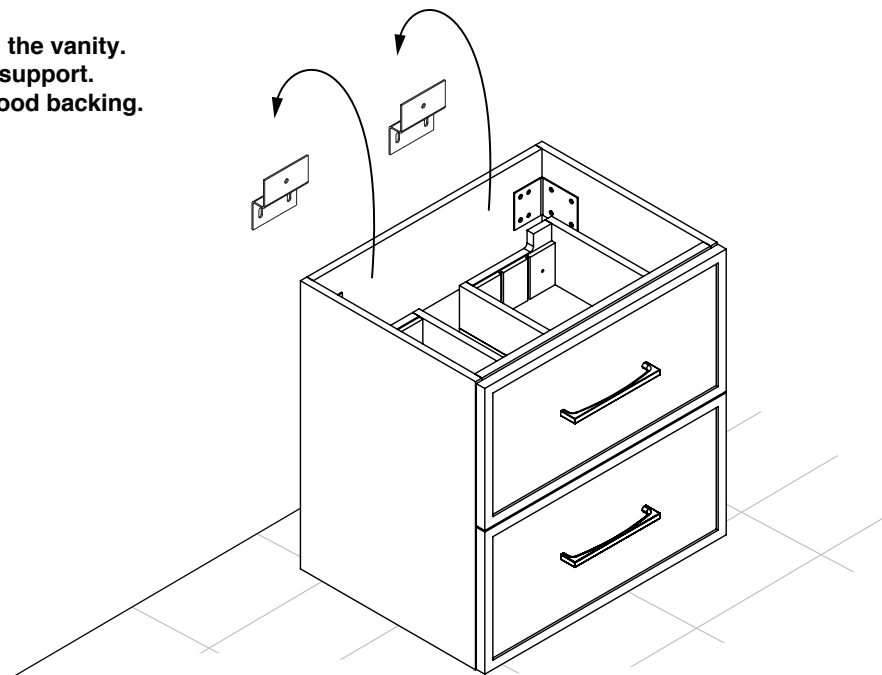
Installation Guide

STEP 1: Install leveling brackets



STEP 2: Place vanity on leveling bracket.

The leveling brackets are only to level the vanity.
They are not designed for permanent support.
The cabinet needs to be secured to wood backing.

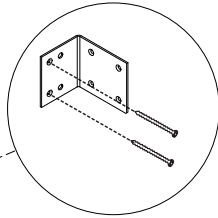


Apex - WALL HUNG VANITY

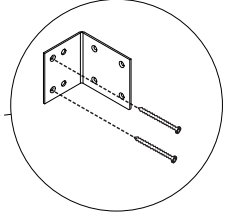
Installation Guide

STEP 3: Secure vanity to wood reinforcement backing.

4 Screws for sizes
24, 30, 36, 42, 48C and 48D

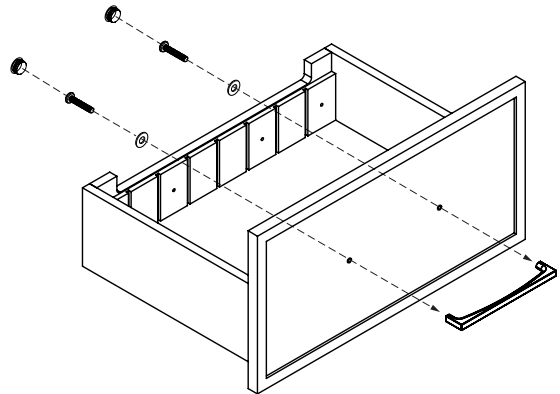
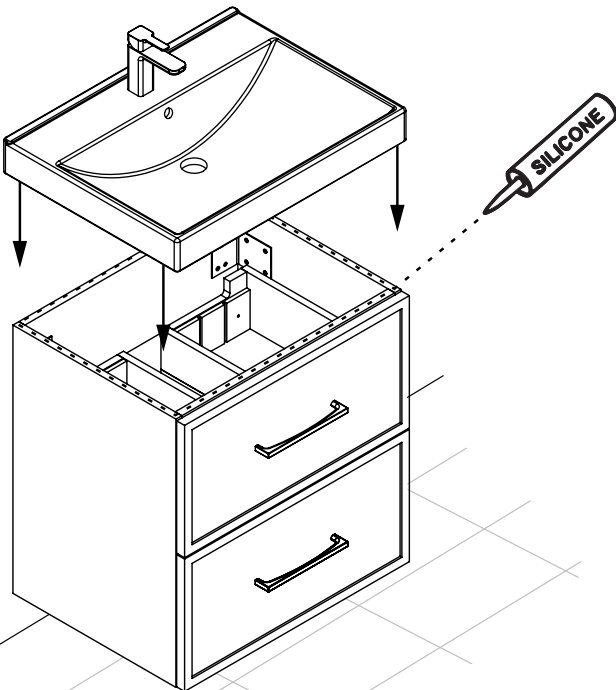


6 Screws for sizes
60C, 60D and 72D



STEP 4: Install countertop with silicone.

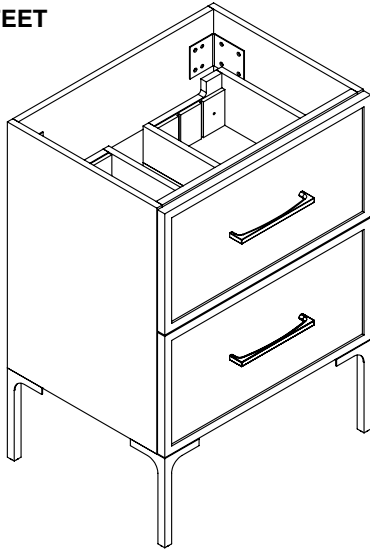
HANDLE INSTALLATION



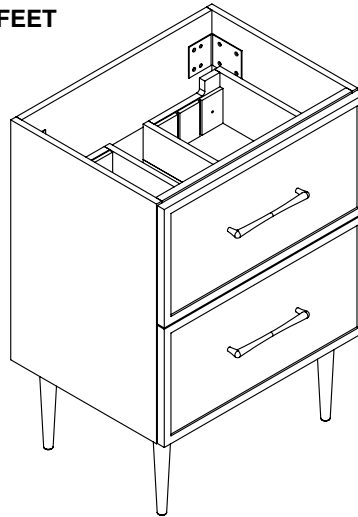
Apex - FREE STANDING VANITY

Feet/Base Installation

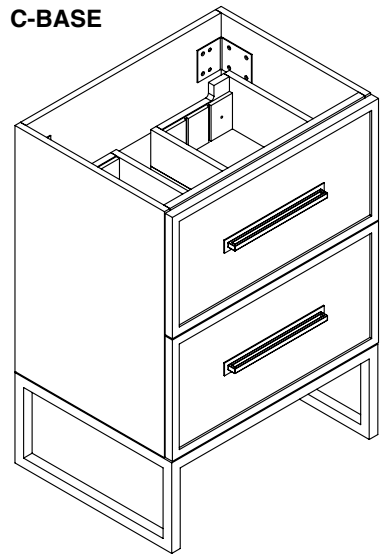
Y-FEET



R-FEET



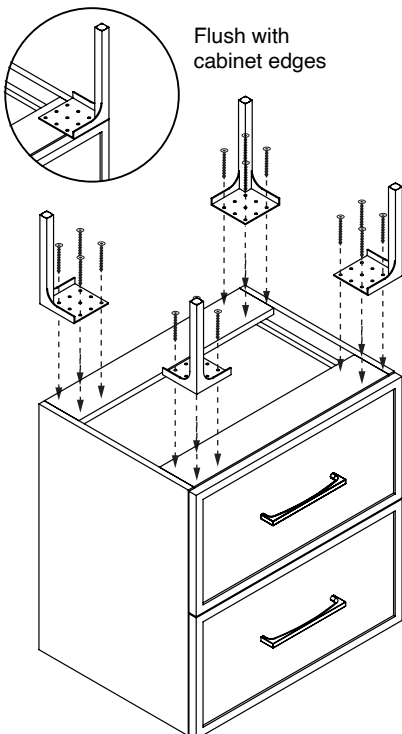
C-BASE



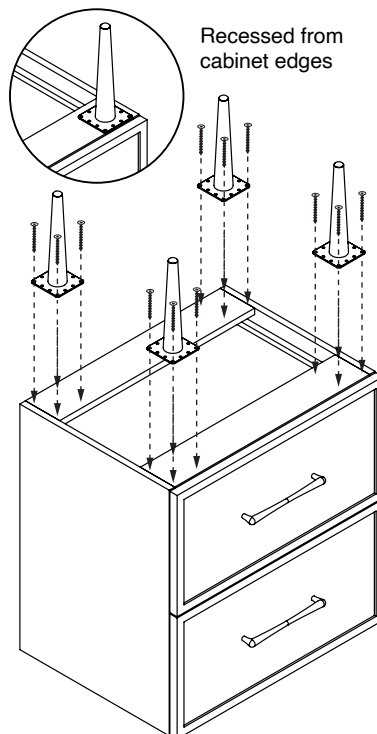
FEET/BASE INSTALLATION

1. Flip cabinet in the upside down position.
 2. Mark screw locations using legs/base as template.
 3. Pre-drill holes with 5/64", 3/32" or 7/64" drill bit about 1/2" deep.
 4. Using provided screws, fix legs/base to cabinet as shown below.
- If using a regular battery drill, set clutch to minimum and increase setting as needed.
DO NOT OVER TIGHTEN THE SCREWS. DOING SO WILL SPLIT THE WOOD SIDE PANEL.

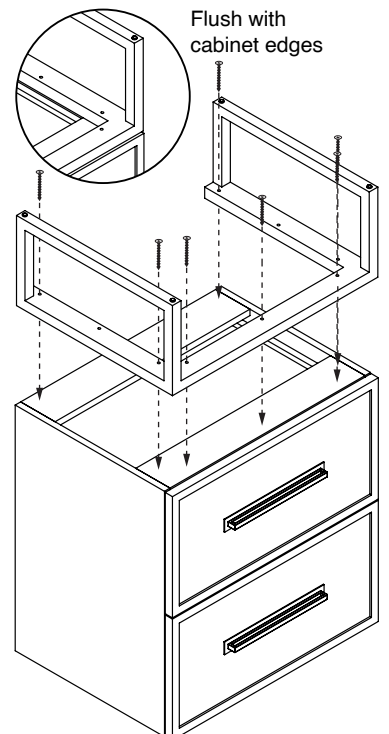
Y-FEET INSTALLATION



R-FEET INSTALLATION



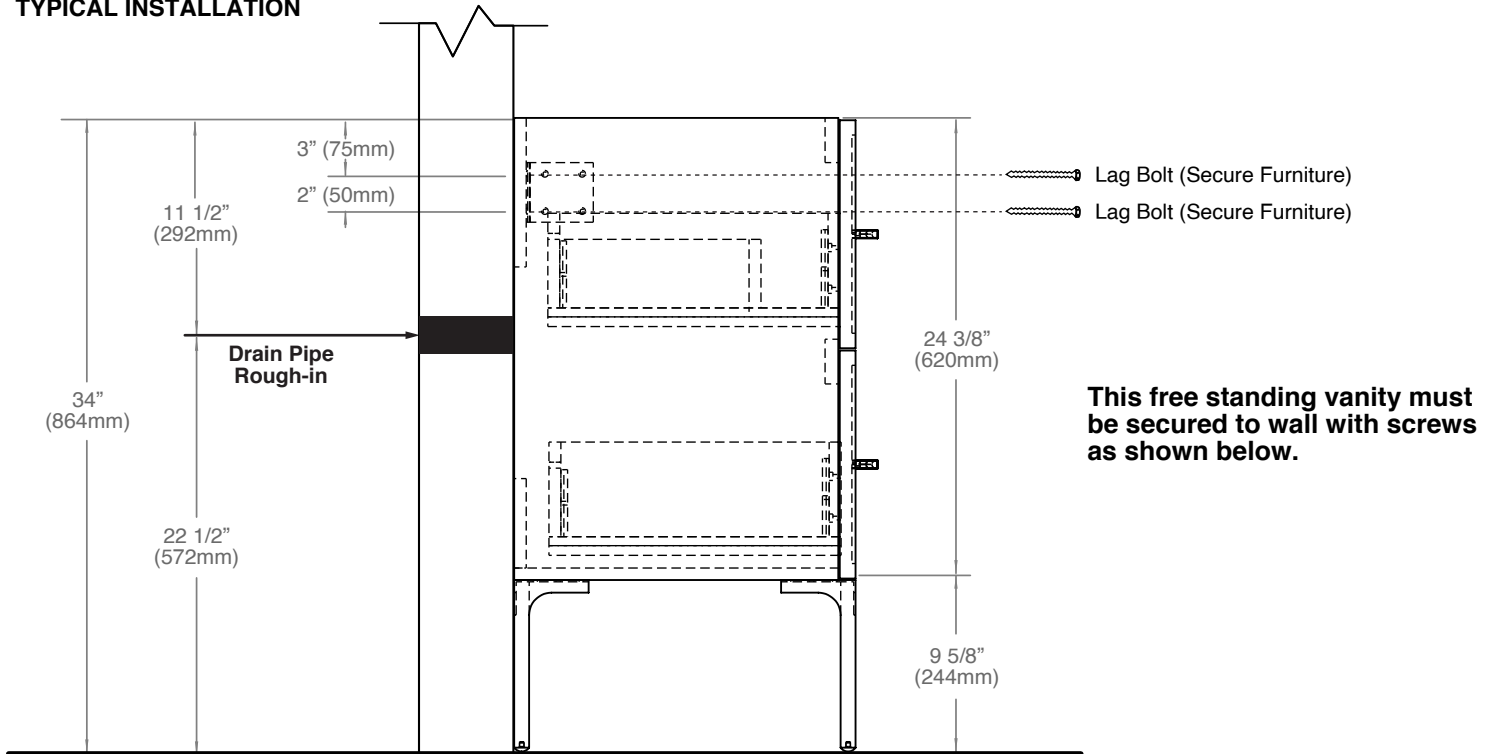
C-BASE INSTALLATION



Apex - FREE STANDING VANITY

Installation Guide

TYPICAL INSTALLATION

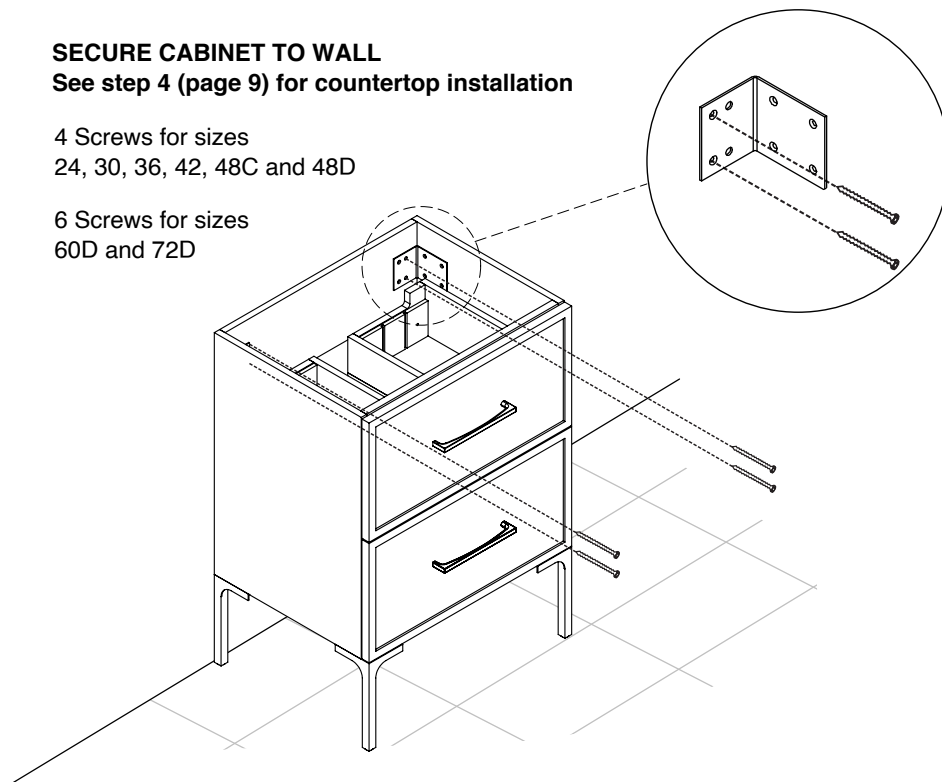


SECURE CABINET TO WALL

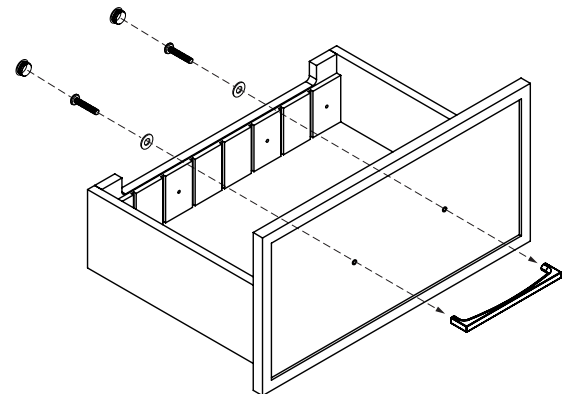
See step 4 (page 9) for countertop installation

4 Screws for sizes
24, 30, 36, 42, 48C and 48D

6 Screws for sizes
60D and 72D



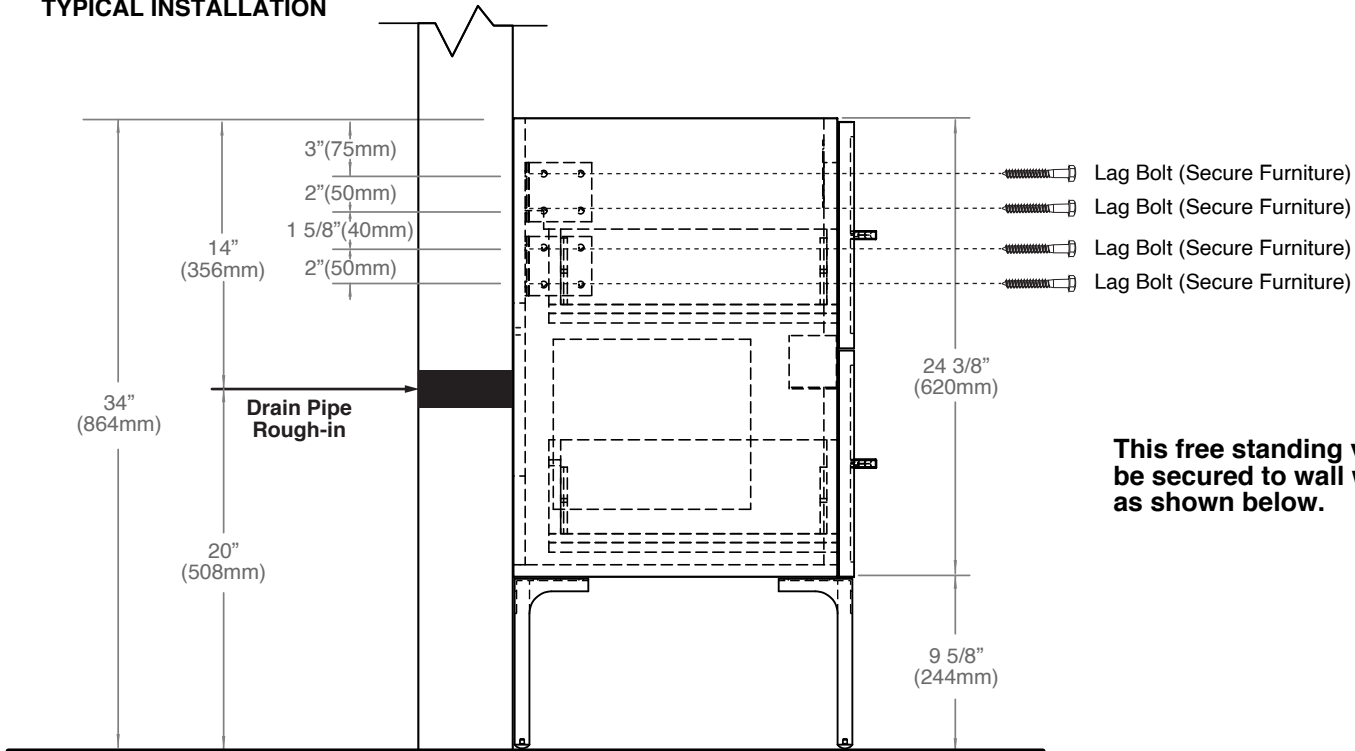
HANDLE INSTALLATION



Apex - FREE STANDING VANITY

Installation Guide

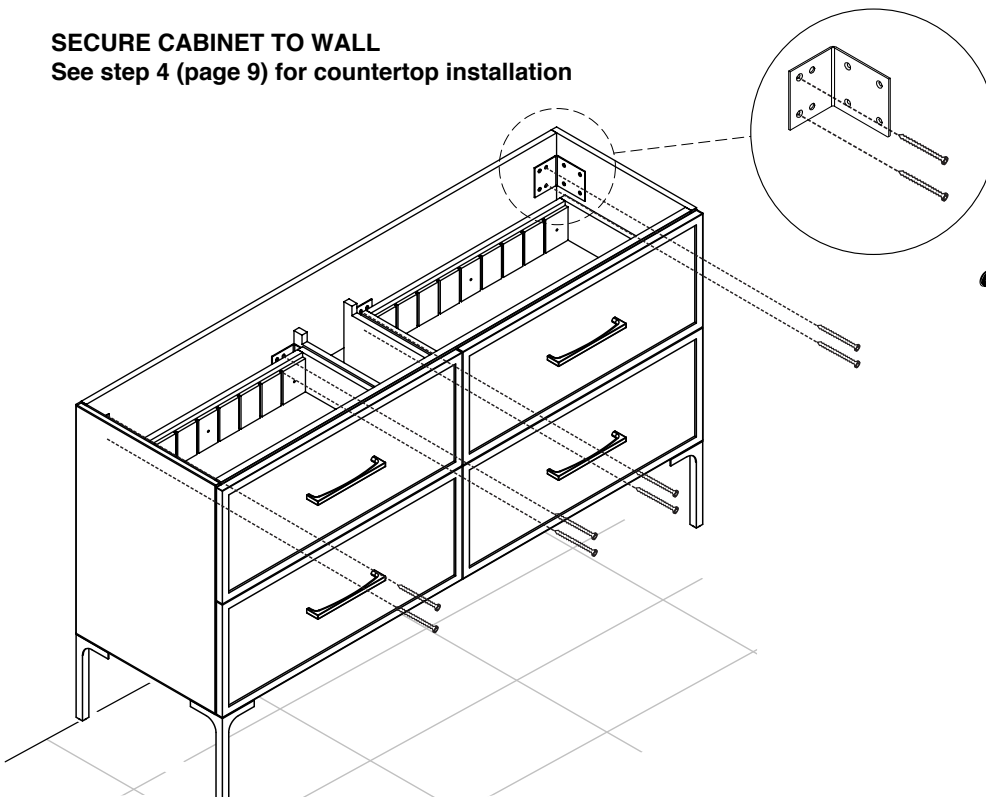
TYPICAL INSTALLATION



This free standing vanity must be secured to wall with screws as shown below.

SECURE CABINET TO WALL

See step 4 (page 9) for countertop installation



HANDLE INSTALLATION

