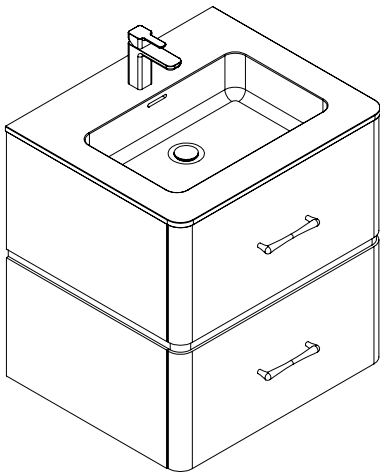


Specifications and Installation Guide

B020-Perla SM
Wall Hung Vanity Collection

Models

- B020-24-002-XX
- B020-30-002-XX
- B020-36-002-XX



B021-Perla
Free Standing Vanity Collection

- B021-24-001-XX
- B021-30-001-XX
- B021-36-001-XX

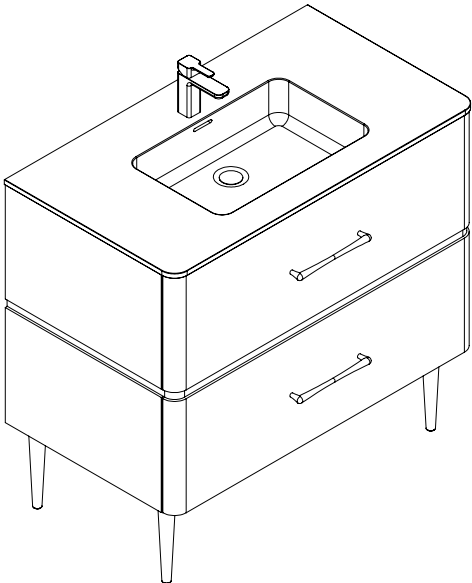


Table of Contents

	Page / Page
Specifications: B020/B021-24/30/36.....	2
Typical Installation: Wall Hung /B020-24/30/36-Perla SM	3-5
Feet Installation: Free Standing /B021-Perla.....	6
Typical Installation: Free Standing /B021-24/30/36-Perla	7

For clarification, please contact Madeli Customer Care at (800) 819-6988 Ext.1 or service@madeli.com
Pour plus de précisions, veuillez contacter le service client Madeli au (800) 819-6988 Ext.1 ou service@madeli.com

Perla SM/Perla - 24"/30"/36"

Cabinet Specifications

Features

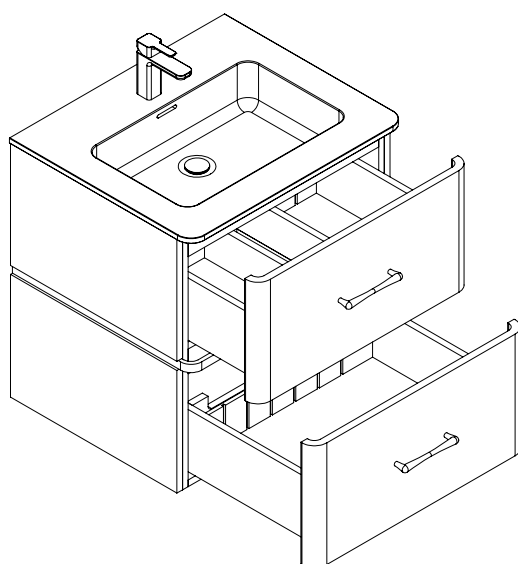
- Perla SM Wall Hung Vanity or Perla Free Standing Vanity
- Two fully adjustable drawers with full extension soft closing glides
- All drawers with adjustable tempered glass dividers
- Furniture grade plywood or moisture-resistant wood composite construction
- Finished with a sealed, decorative veneer or with premium polyurethane solid color paints
- Handle/Feet finish options: polished chrome (PC), brushed nickel (BN), polished nickel (PN), matte black (MB) and satin brass (SB)
- Handle/Feet furnished separately for field installation

Top/Basin options

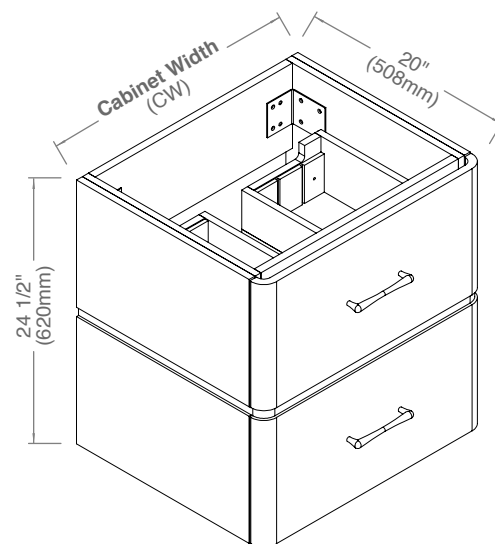
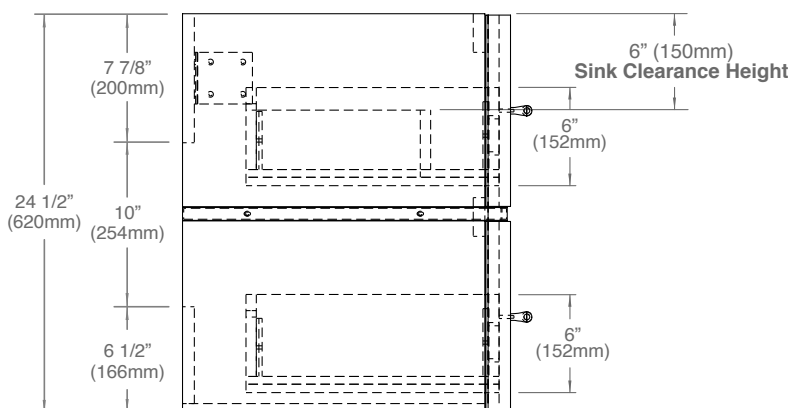
- Quartzstone 3/4"H countertop with ceramic basin.
- X-Stone 1/2"H top/basin

Drawer Boxes

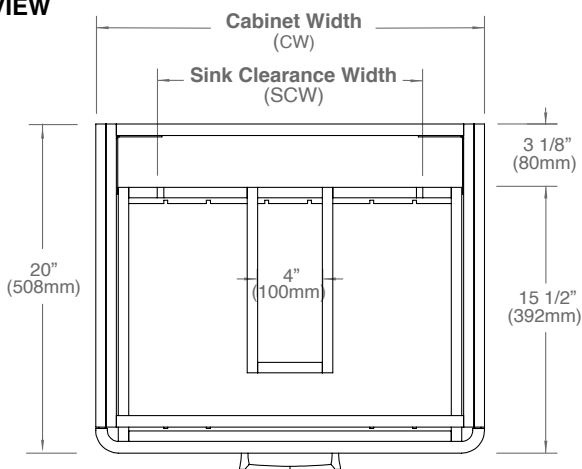
- Matching color for solid color units
- Solid wood with dovetail joints for decorative veneer units



SIDE VIEW



TOP VIEW



MODEL	CW	SCW	Package Dimensions	Weight
B020/B021-24-00X-XX	23 5/8" (600mm)	16 1/8" (410mm)	26 5/8"(675) x 23"(583) x 27 3/8"(695)	76 lbs / 34.5 Kgs
B020/B021-30-00X-XX	29 5/8" (753mm)	22 1/8" (563mm)	32 5/8"(828) x 23"(583) x 27 3/8"(695)	85 lbs / 38.5 Kgs
B020/B021-36-00X-XX	35 5/8" (905mm)	28 1/8" (715mm)	38 5/8"(980) x 23"(583) x 27 3/8"(695)	96 lbs / 43.5 Kgs

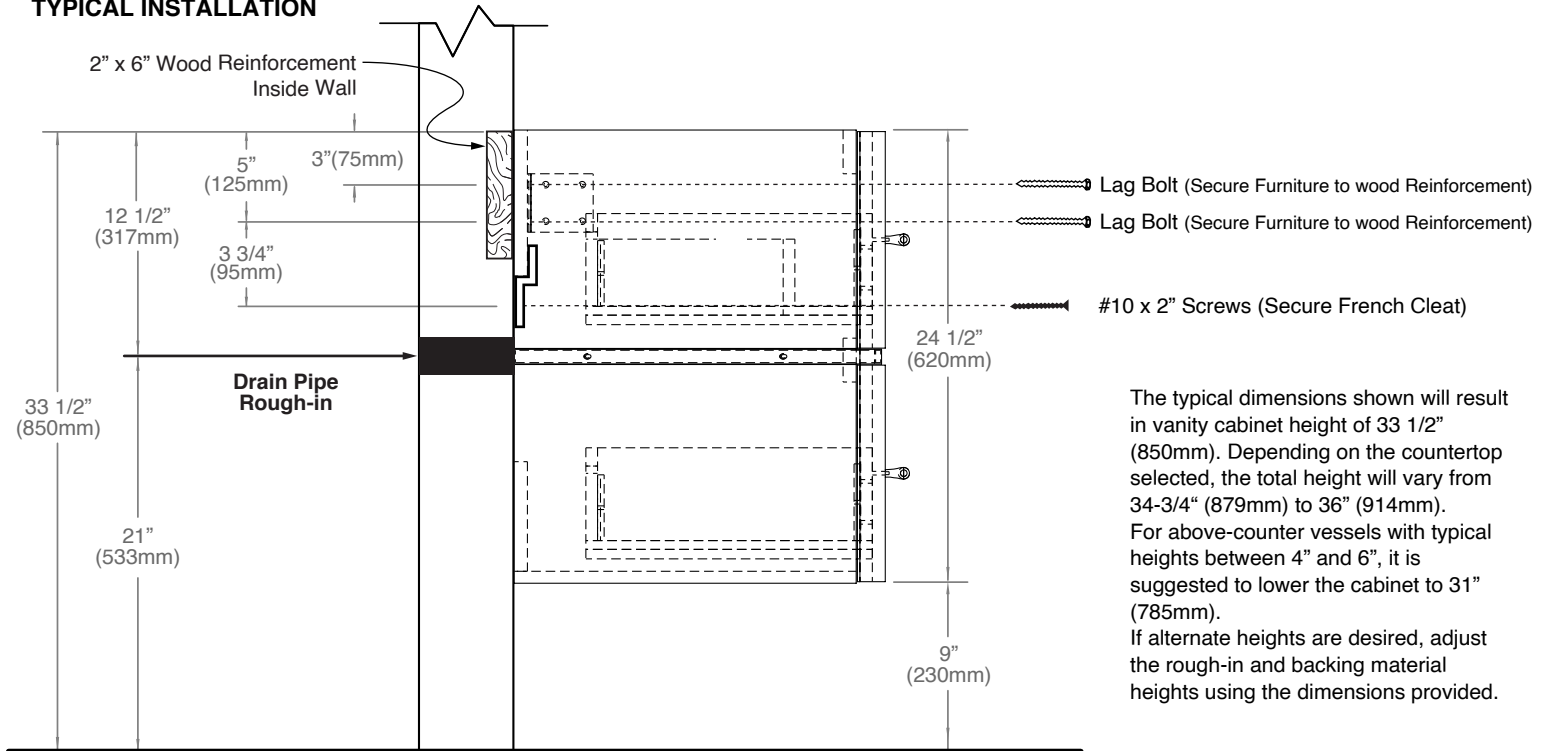
For clarification, please contact Madeli Customer Care at (800) 819-6988 Ext.1 or service@madeli.com

All dimensions are approximate and subject to standard tolerance. Specifications subject to change without prior notice. Find latest revision on madeli.com.

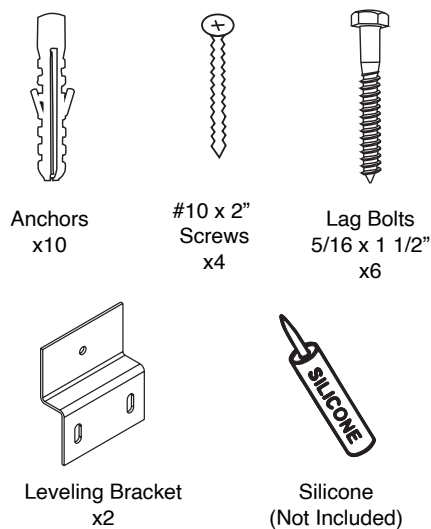
Perla SM - 24"/30"/36"

Installation Guide

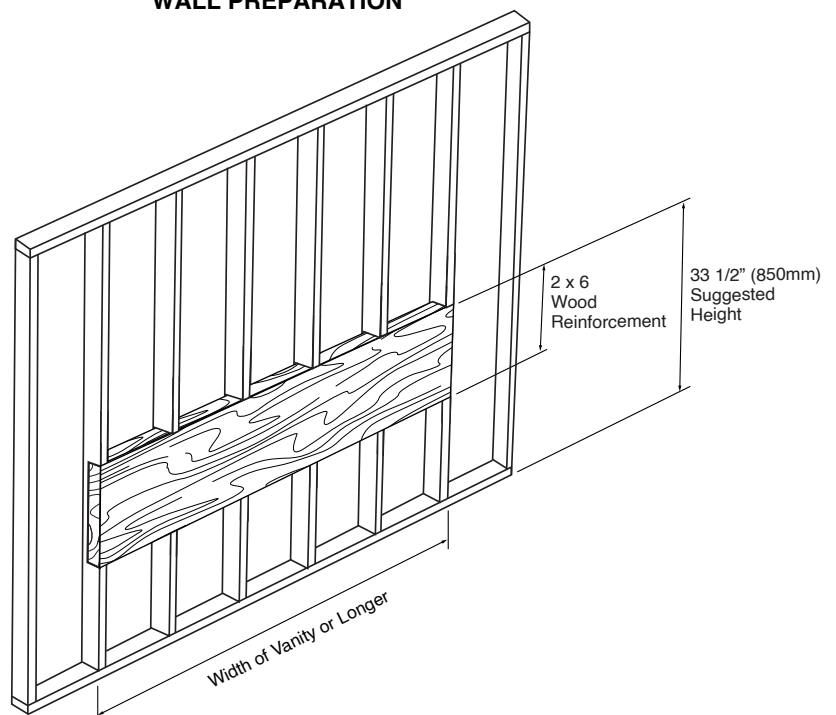
TYPICAL INSTALLATION



ACCESSORIES FOR INSTALLATION



WALL PREPARATION



For clarification, please contact Madeli Customer Care at (800) 819-6988 Ext.1 or service@madeli.com

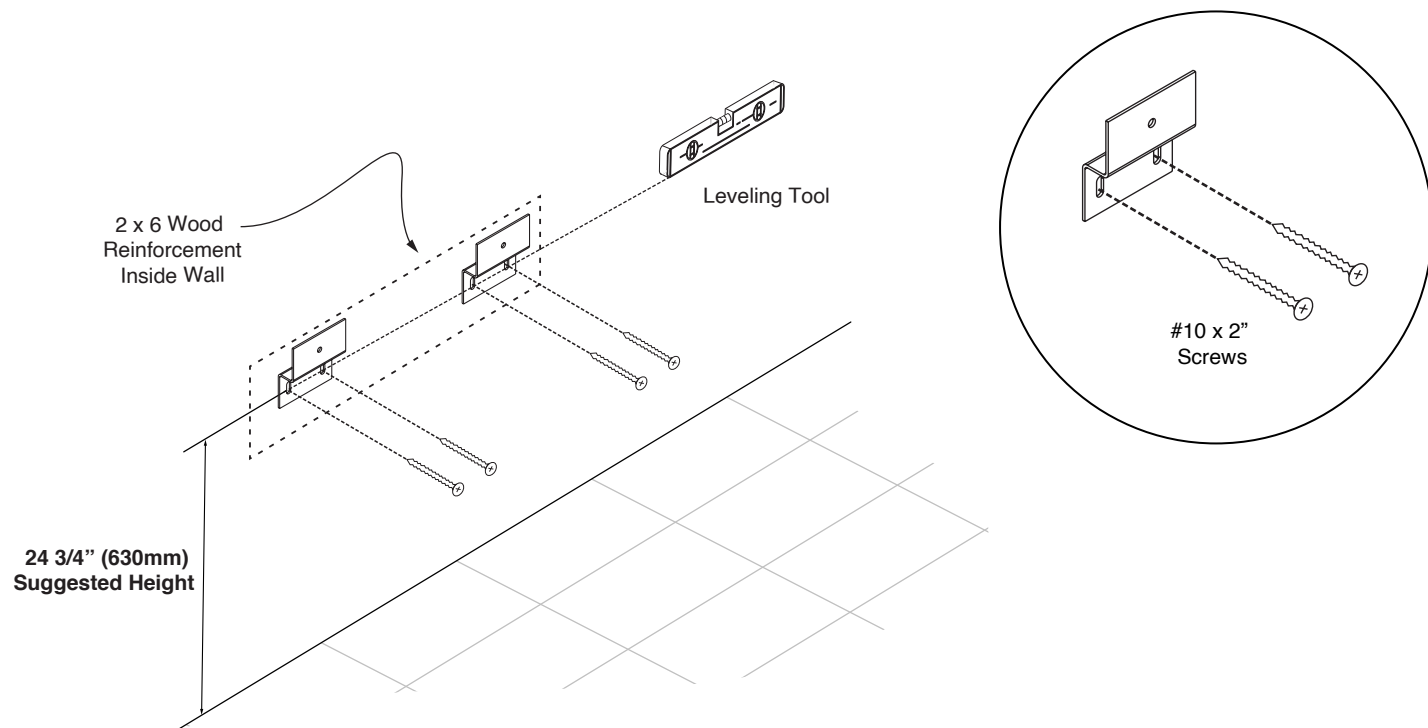
All dimensions are approximate and subject to standard tolerance. Specifications subject to change without prior notice. Find latest revision on madeli.com.

03 | Page

Perla SM - 24"/30"/36"

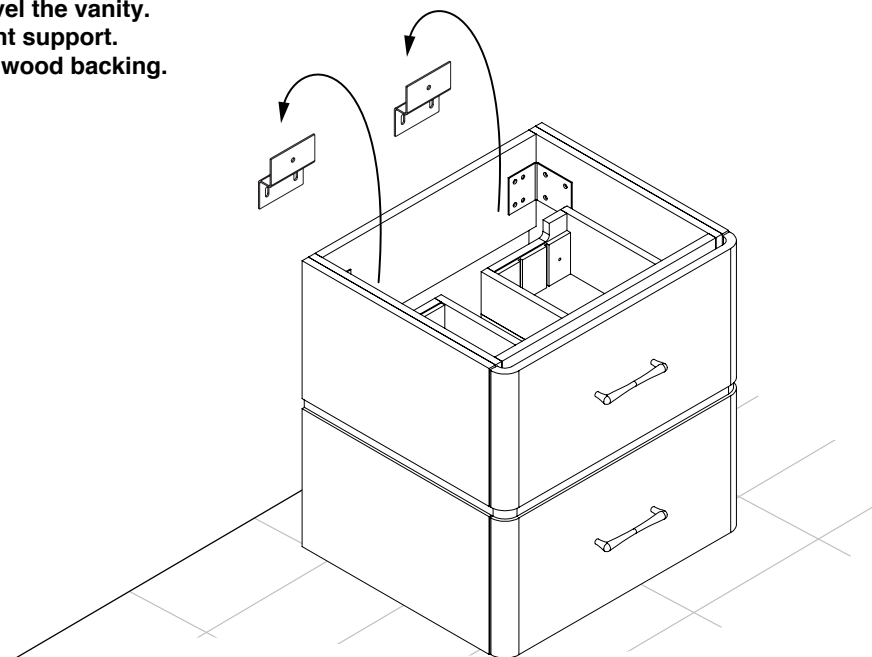
Installation Guide

STEP 1: Install leveling brackets



STEP 2: Place vanity on leveling bracket.

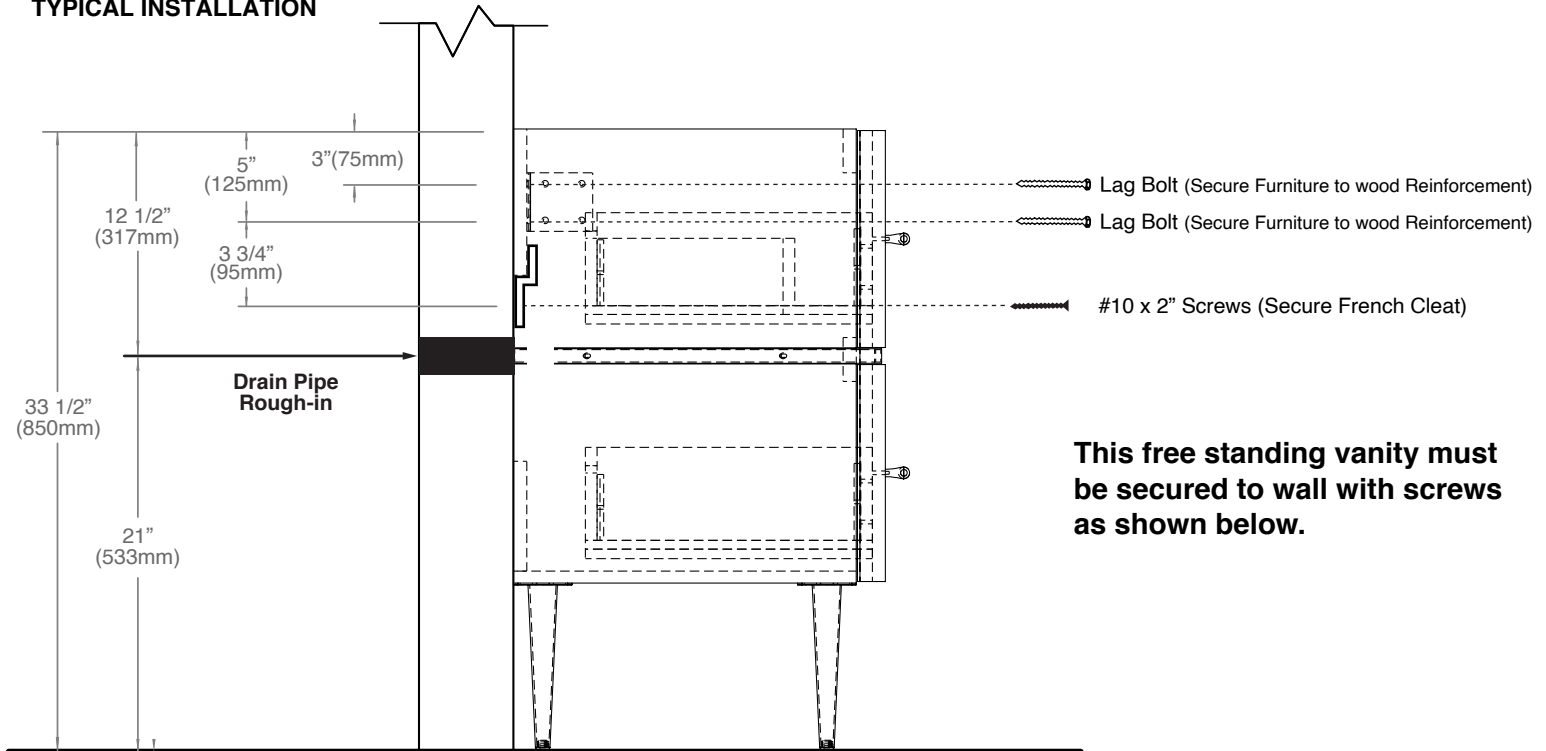
**The leveling brackets are only to level the vanity.
They are not designed for permanent support.
The cabinet needs to be secured to wood backing.**



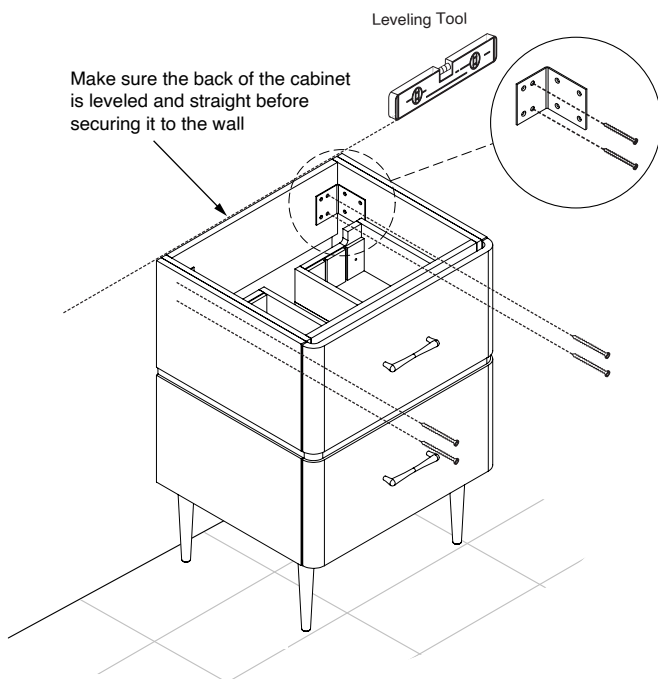
Perla - FREE STANDING VANITY

Installation Guide

TYPICAL INSTALLATION

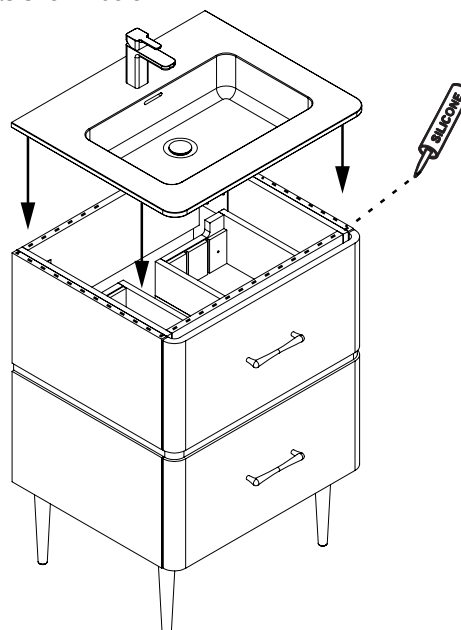


SECURE CABINET TO WALL



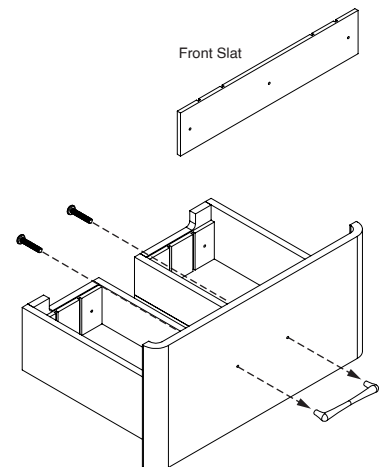
COUNTERTOP INSTALLATION

Install countertop with silicone as shown below.



HANDLE INSTALLATION

Remove the front slat from the drawer box before installing the handle with screws.



For clarification, please contact Madeli Customer Care at (800) 819-6988 Ext.1 or service@madeli.com

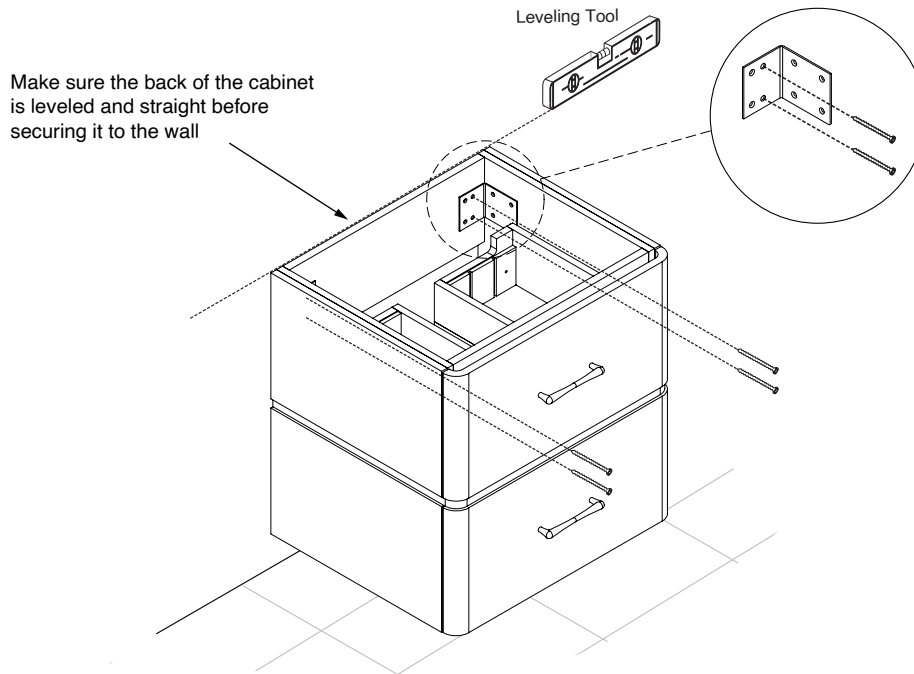
All dimensions are approximate and subject to standard tolerance. Specifications subject to change without prior notice. Find latest revision on madeli.com.

07 | Page

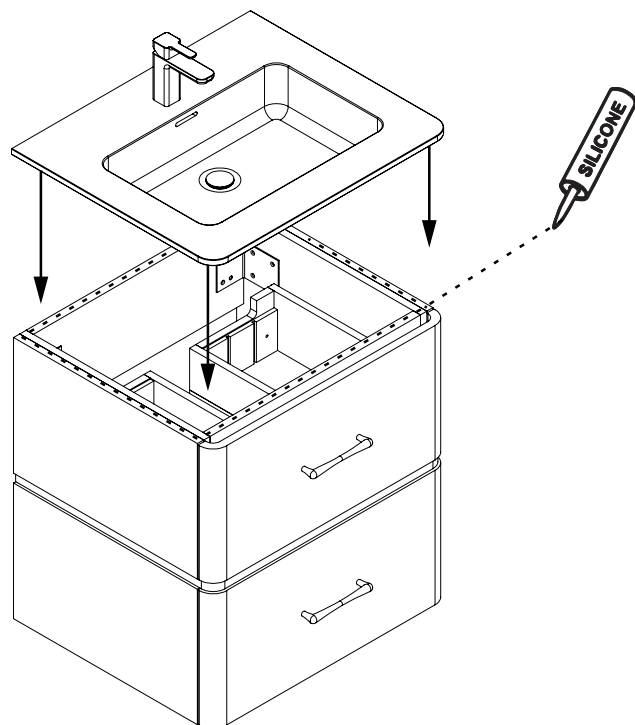
Perla SM - 24"/30"/36"

Installation Guide

STEP 3: Secure vanity to wood reinforcement backing.

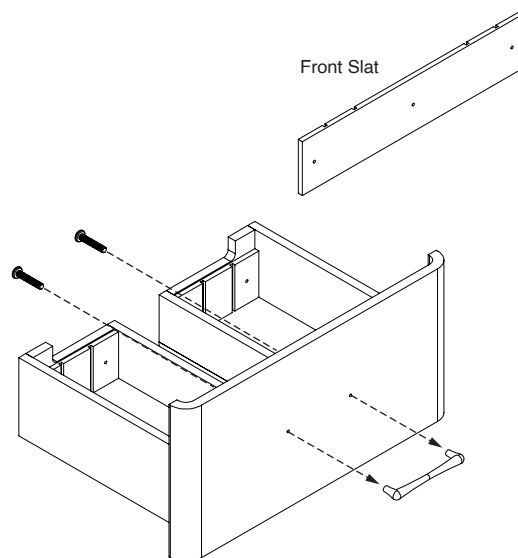


STEP 4: Install countertop with silicone and handles as shown below.



HANDLE INSTALLATION

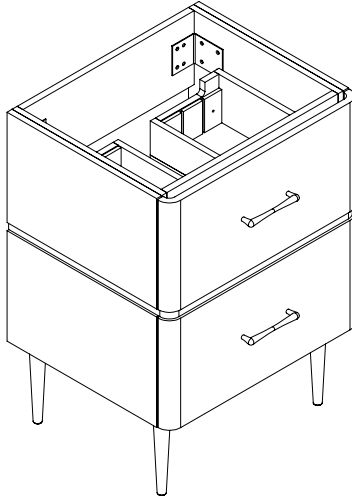
Remove the front slat from the drawer box before installing the handle with screws.



Perla - FREE STANDING VANITY

Feet/Base Installation

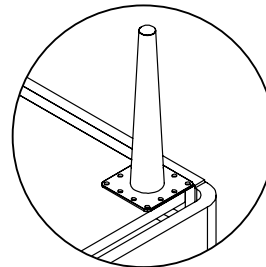
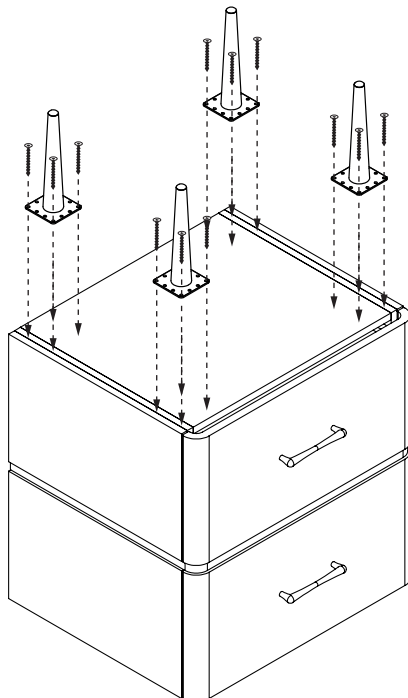
R-FEET



FEET/BASE INSTALLATION

1. Flip cabinet in the upside down position.
 2. Mark screw locations using legs/base as template.
 3. Pre-drill holes with 5/64", 3/32" or 7/64" drill bit about 1/2" deep.
 4. Using provided screws, fix legs/base to cabinet as shown below.
- If using a regular battery drill, set clutch to minimum and increase setting as needed.
DO NOT OVER TIGHTEN THE SCREWS. DOING SO WILL SPLIT THE WOOD SIDE PANEL.

R-FEET INSTALLATION



Recessed from
cabinet edges

