

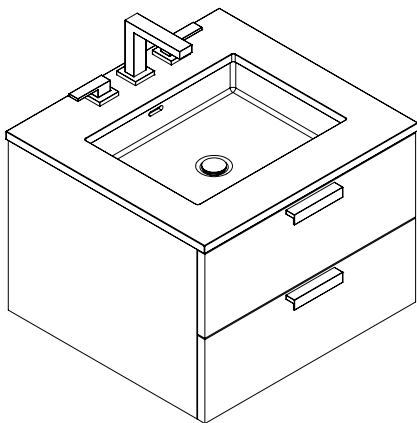
Specifications and Installation Guide

B010-Geo

Wall Hung Vanity Collection

Models

- B010-24-002-XX
- B010-30-002-XX



B011-Trapezio

Free Standing Vanity Collection

- B011-30-001-XX
- B011-36-001-XX

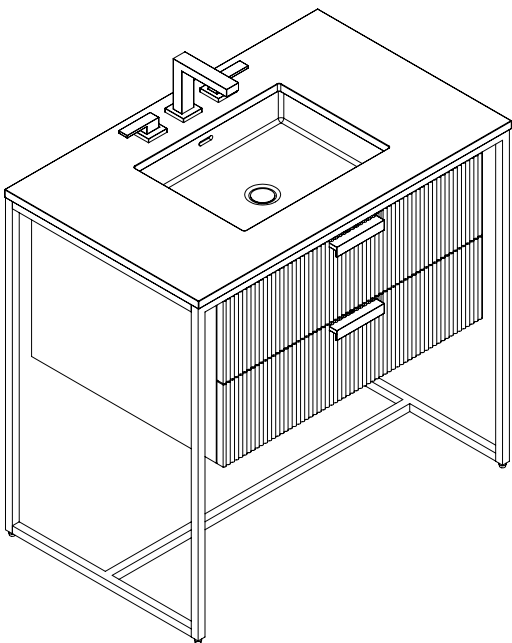


Table of Contents

	Page / Page
Specifications: B010-24/30-Geo.....	2
Specifications: B011-30/36-Trapezio.....	3
Typical Installation: Wall Hung /B010-24/30-Geo	4-6
Typical Installation: Free Standing /B011-24/30-Trapezio	7

For clarification, please contact Madeli Customer Care at (800) 819-6988 Ext.1 or service@madeli.com
Pour plus de précisions, veuillez contacter le service client Madeli au (800) 819-6988 Ext.1 ou service@madeli.com

Geo - 24"/30"

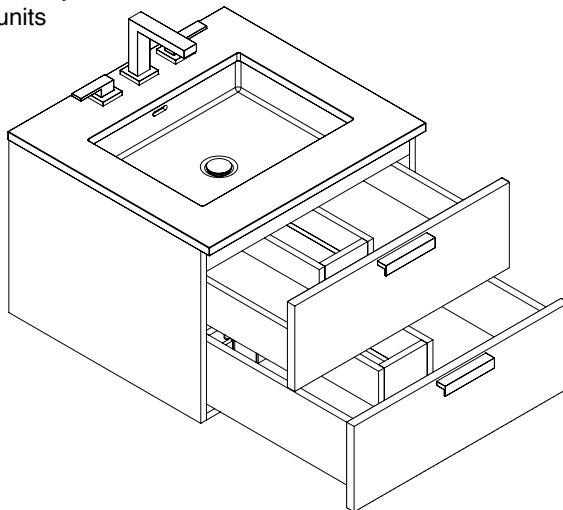
Cabinet Specifications

Features

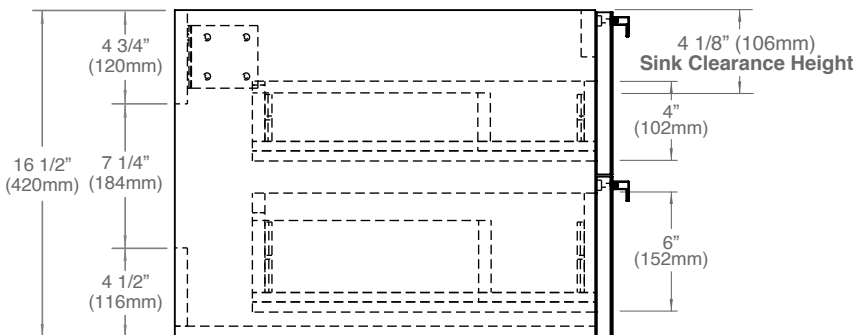
- Geo Wall Hung Vanity
- Flat or Fluted drawer front-panel
- Two fully adjustable drawers with full extension soft closing glides
- All drawers with adjustable tempered glass dividers
- Furniture grade plywood or moisture-resistant wood composite construction
- Finished with a sealed, decorative veneer or with premium polyurethane solid color paints
- Includes two handles (HL-05)
- Handle finish options: polished chrome (PC), brushed nickel (BN), polished nickel (PN), matte black (MB) and satin brass (SB)
- Handle furnished separately for field installation

Drawer Boxes

- Matching color for solid color units
- Solid wood with dovetail joints for decorative veneer units



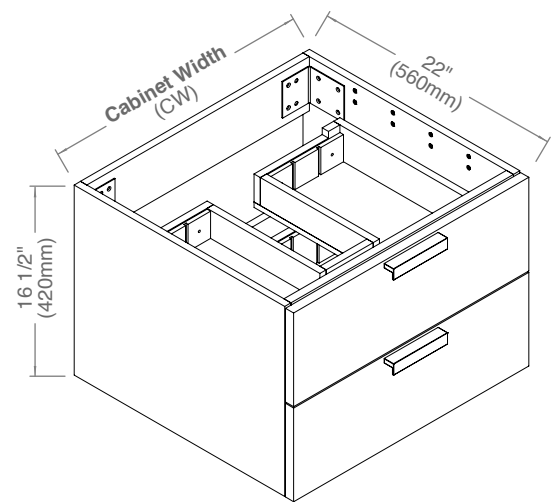
SIDE VIEW



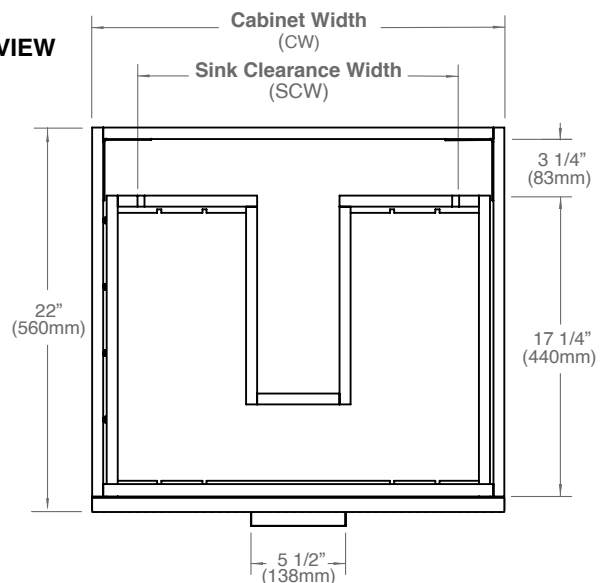
Top/Basin options

- Quartzstone 3/4"H countertop with XT-2015-WH X-Stone Undermount Sink
- X-Stone 2"H top/basin

Under mount sink installation requires a minimum 3" high countertop, unless Madeli's XT-2015-WH is used as the undermount sink



TOP VIEW



MODEL	CW	SCW	Package Dimensions	Weight
B010-24-002-XX	23 5/8" (600mm)	18 1/2" (468mm)	32 5/8" (828) x 25" (635) x 36" (913)	43 lbs / 19.5 Kgs
B010-30-002-XX	29 5/8" (753mm)	24 1/2" (621mm)	38 5/8" (980) x 25" (635) x 36" (913)	51 lbs / 23 Kgs

For clarification, please contact Madeli Customer Care at (800) 819-6988 Ext.1 or service@madeli.com

All dimensions are approximate and subject to standard tolerance. Specifications subject to change without prior notice. Find latest revision on madeli.com.

02 | Page

Trapezio - 30"/36"

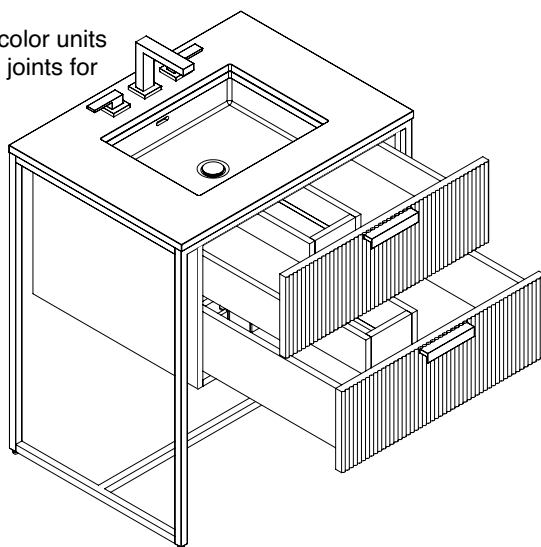
Cabinet Specifications

Features

- Trapezio Free Standing Vanity
- Flat or Fluted drawer front-panel
- Two fully adjustable drawers with full extension soft closing glides
- All drawers with adjustable tempered glass dividers
- Furniture grade plywood or moisture-resistant wood composite construction
- Finished with a sealed, decorative veneer or with premium polyurethane solid color paints
- Includes two handles (HL-05)
- Handle/Base finish options: polished chrome (PC), brushed nickel (BN), polished nickel (PN), matte black (MB) and satin brass (SB)
- Handle furnished separately for field installation

Drawer Boxes

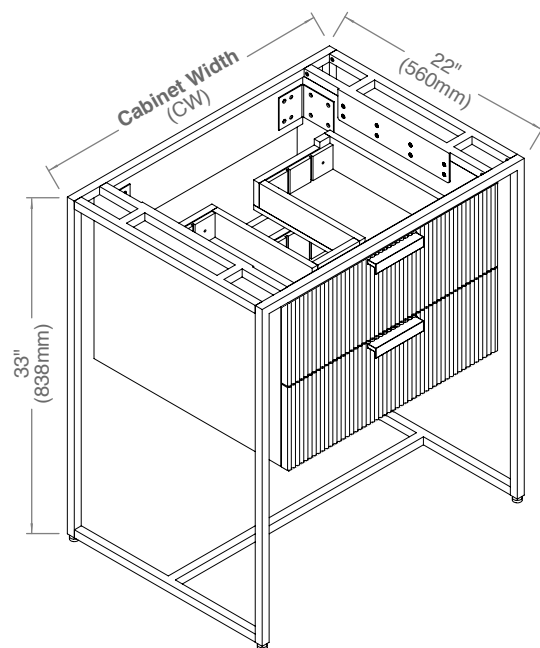
- Matching color for solid color units
- Solid wood with dovetail joints for decorative veneer units



Top/Basin options

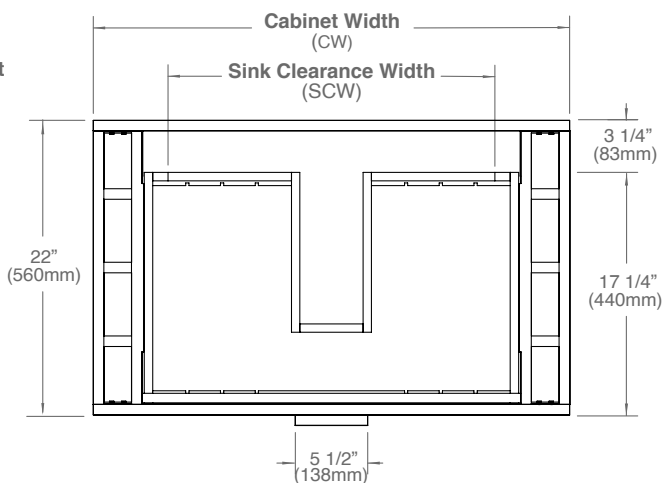
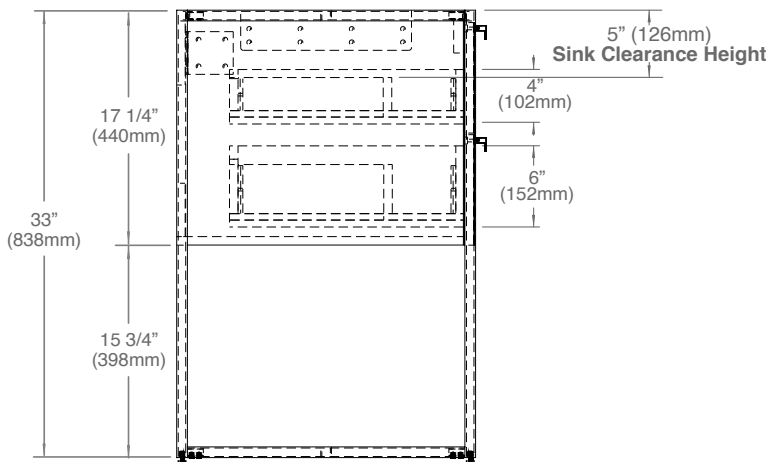
- Quartzstone 3/4"H countertop with XT-2015-WH X-Stone Undermount Sink
- X-Stone 2"H top/basin

Under mount sink installation requires a minimum 3" high countertop, unless Madeli's XT-2015-WH is used as the undermount sink



SIDE VIEW

TOP VIEW



MODEL	CW	SCW	Package Dimensions	Weight
B011-30-001-XX	29 5/8" (753mm)	18 1/2" (468mm)	32 5/8" (828) x 25" (635) x 36" (913)	48 lbs / 22 Kgs
B011-36-001-XX	35 5/8" (905mm)	24 1/2" (621mm)	38 5/8" (980) x 25" (635) x 36" (913)	56 lbs / 25.5 Kgs

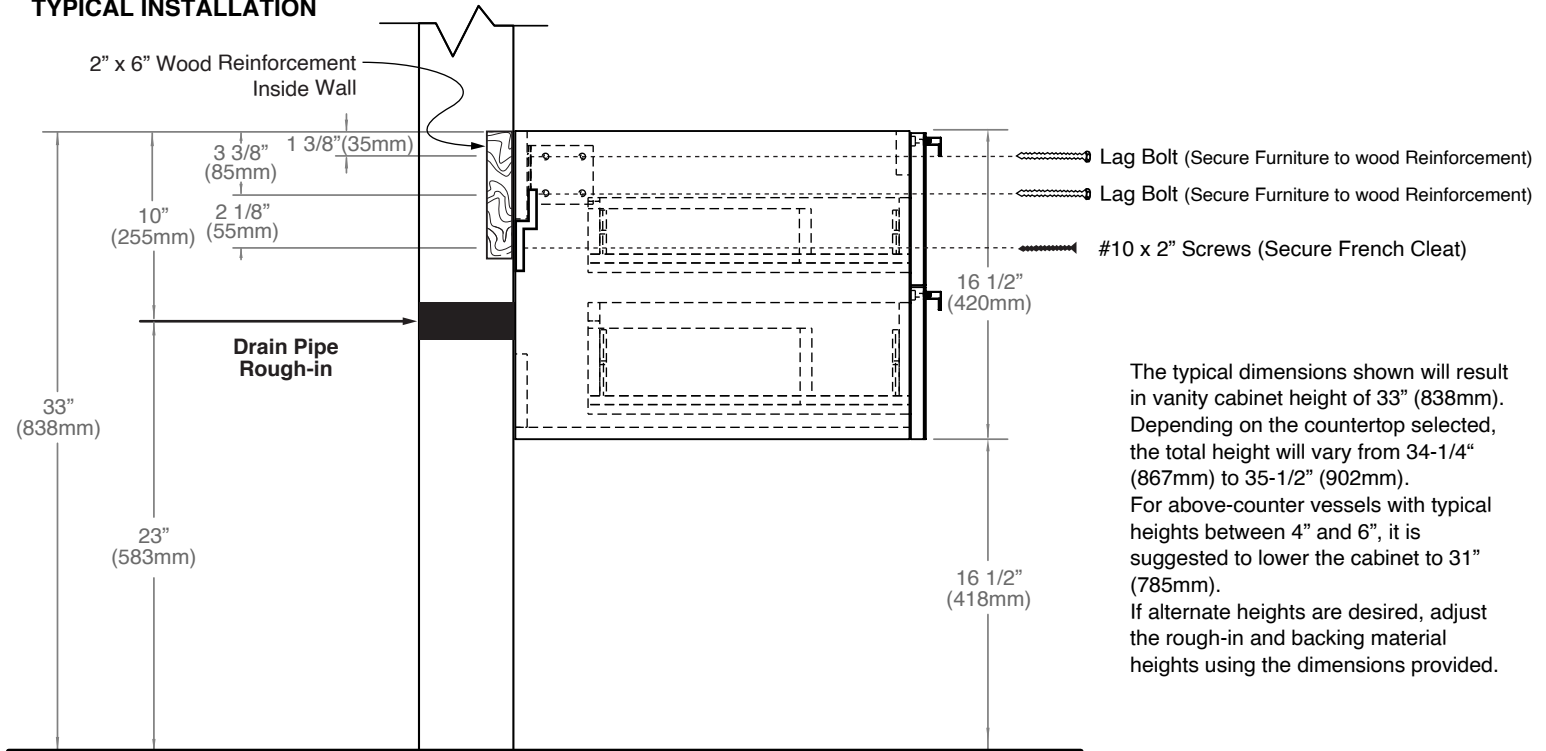
For clarification, please contact Madeli Customer Care at (800) 819-6988 Ext.1 or service@madeli.com

All dimensions are approximate and subject to standard tolerance. Specifications subject to change without prior notice. Find latest revision on madeli.com.

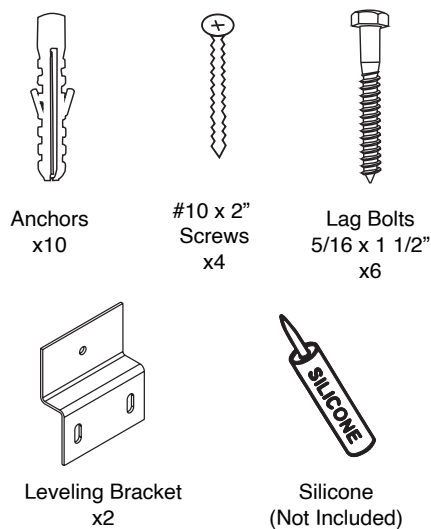
Geo - WALL HUNG VANITY

Installation Guide

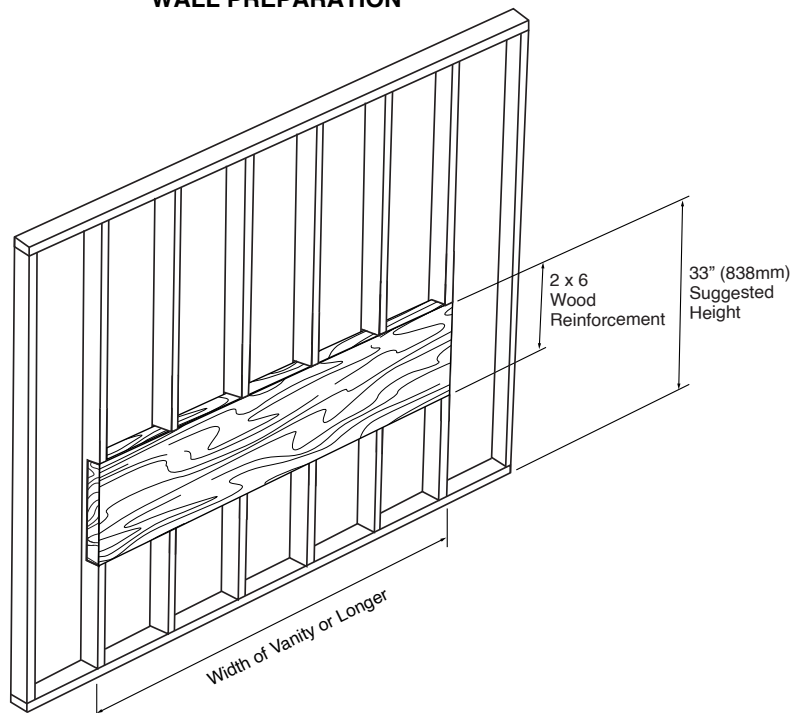
TYPICAL INSTALLATION



ACCESSORIES FOR INSTALLATION



WALL PREPARATION



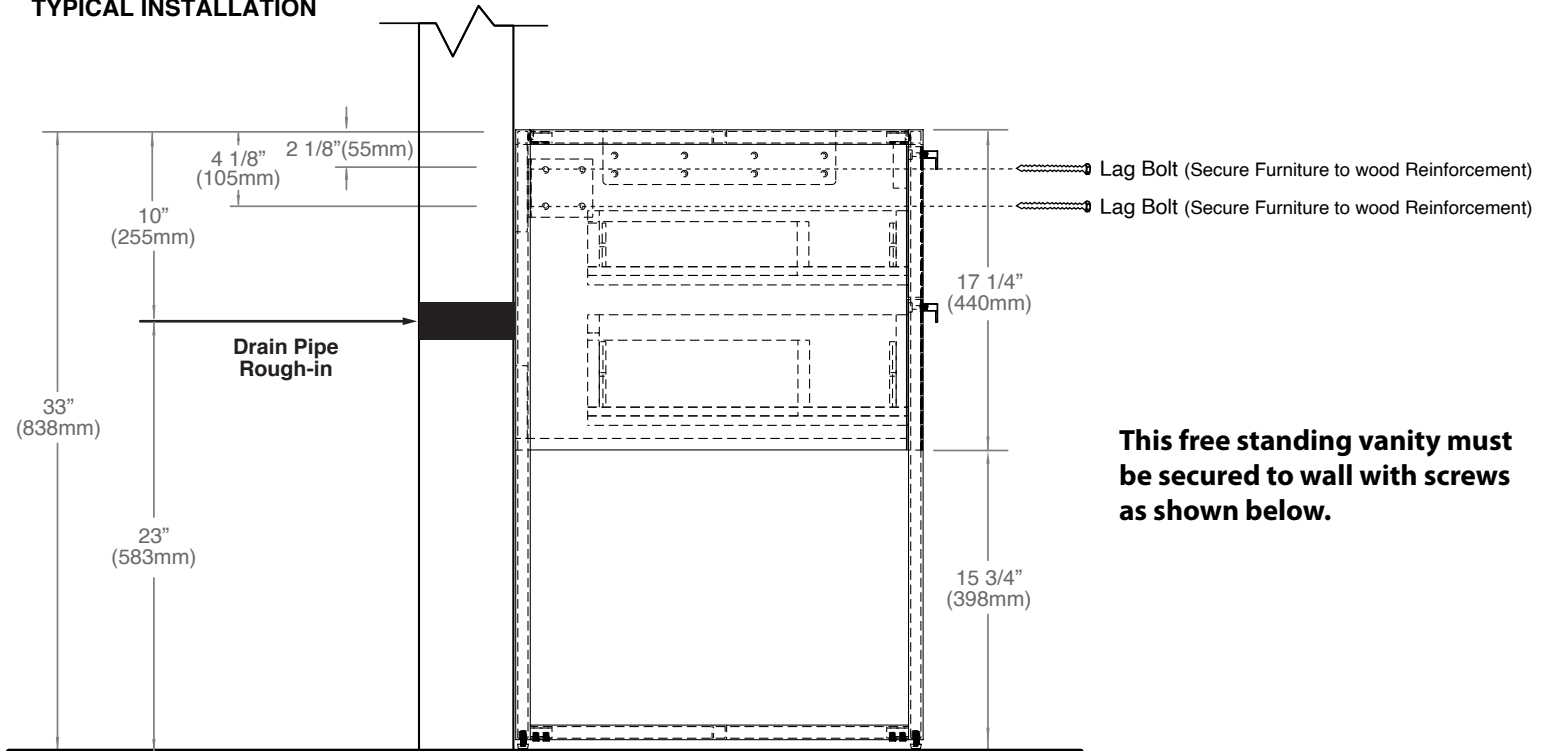
For clarification, please contact Madeli Customer Care at (800) 819-6988 Ext.1 or service@madeli.com

All dimensions are approximate and subject to standard tolerance. Specifications subject to change without prior notice. Find latest revision on madeli.com.

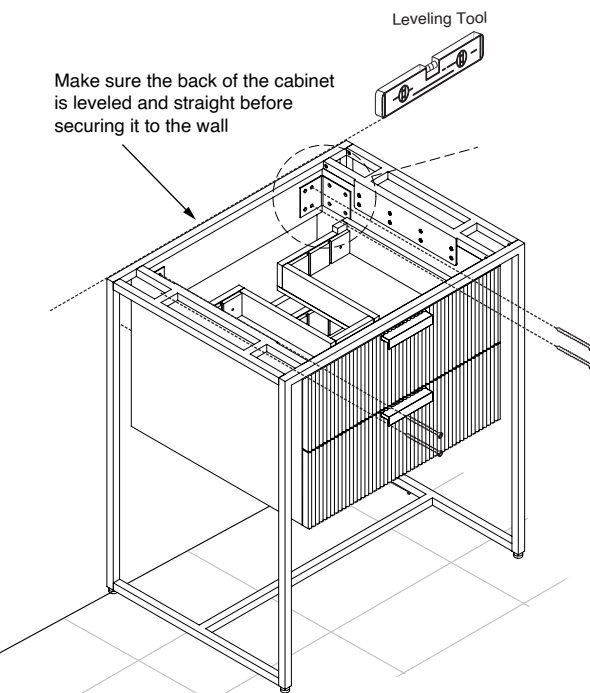
Trapezio - FREE STANDING VANITY

Installation Guide

TYPICAL INSTALLATION

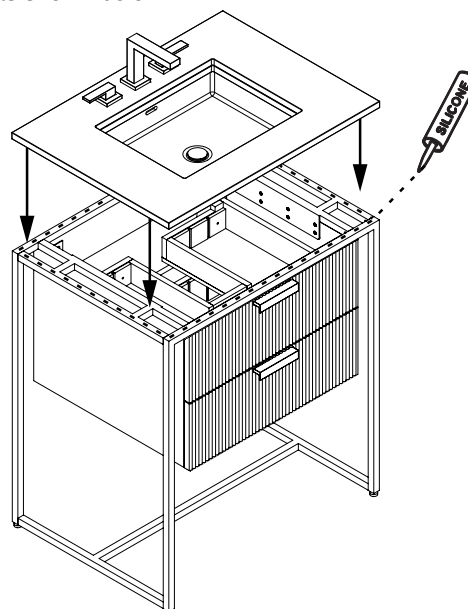


SECURE CABINET TO WALL



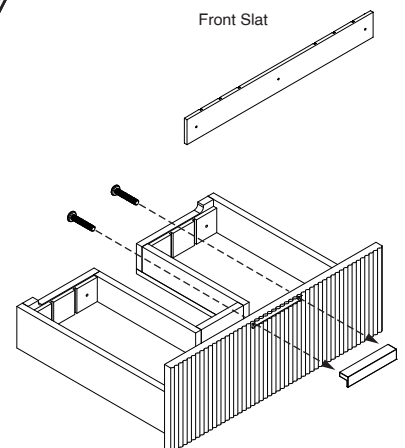
COUNTERTOP INSTALLATION

Install countertop with silicone as shown below.



HANDLE INSTALLATION

Remove the front slat from the drawer box before installing the handle with screws.



For clarification, please contact Madeli Customer Care at (800) 819-6988 Ext.1 or service@madeli.com

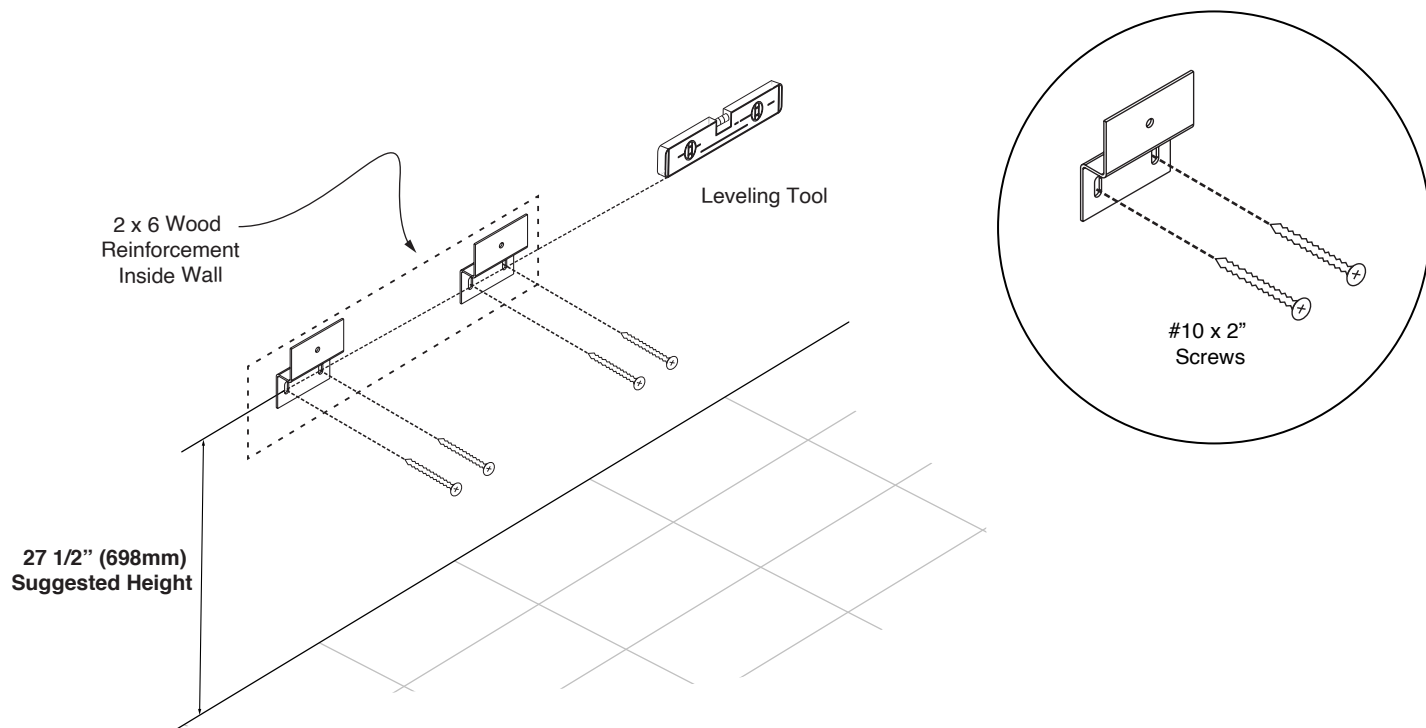
All dimensions are approximate and subject to standard tolerance. Specifications subject to change without prior notice. Find latest revision on madeli.com.

07 | Page

Geo - WALL HUNG VANITY

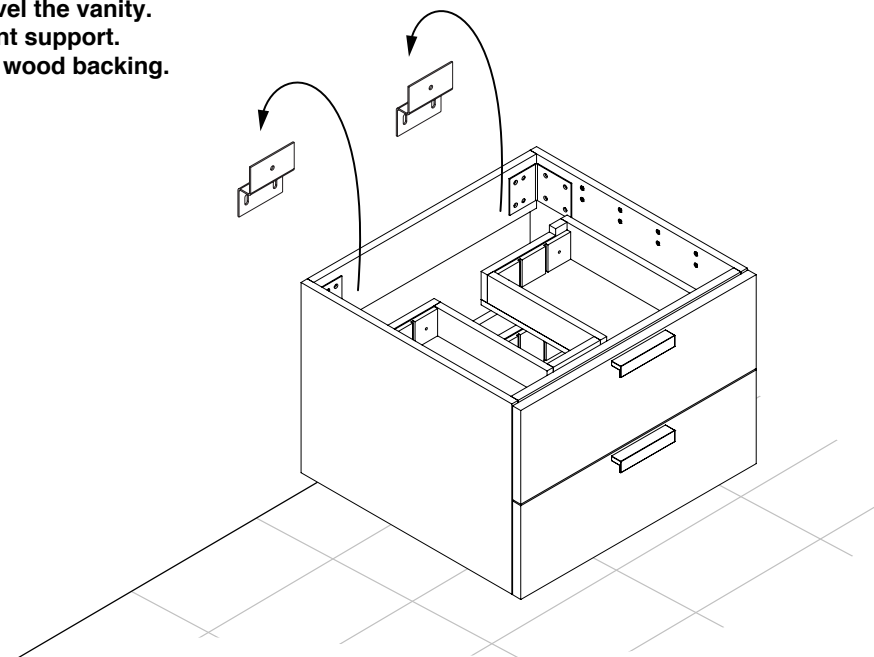
Installation Guide

STEP 1: Install leveling brackets



STEP 2: Place vanity on leveling bracket.

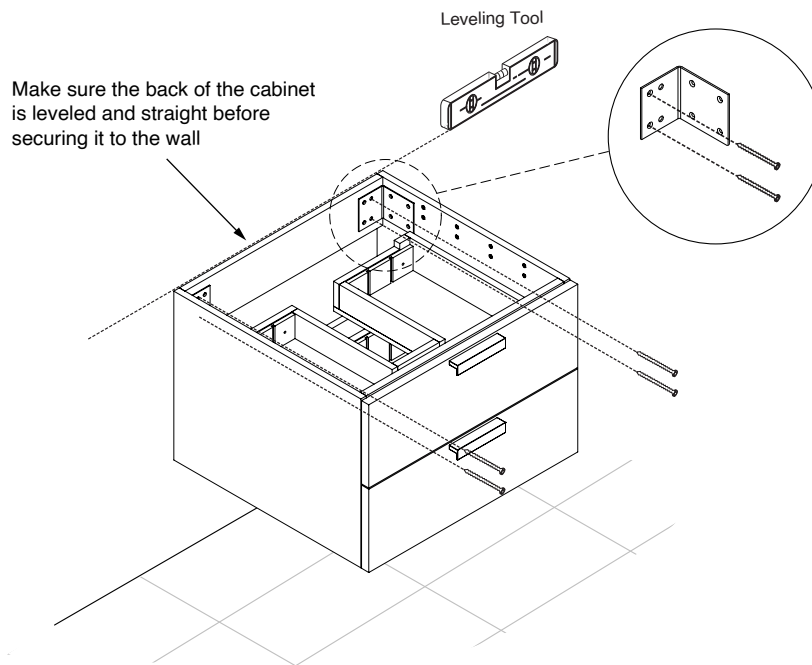
**The leveling brackets are only to level the vanity.
They are not designed for permanent support.
The cabinet needs to be secured to wood backing.**



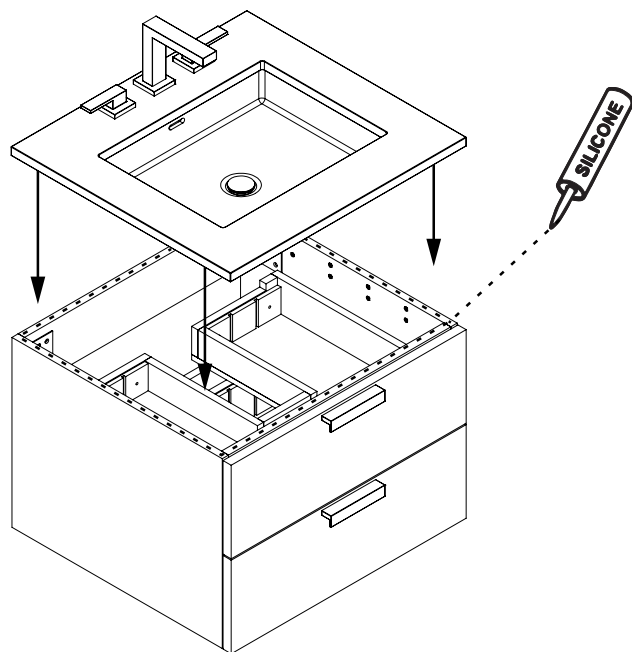
Geo - WALL HUNG VANITY

Installation Guide

STEP 3: Secure vanity to wall reinforcement backing.



STEP 4: Install countertop with silicone and handles as shown below.



HANDLE INSTALLATION

Remove the front slat from the drawer box before installing the handle with screws.

