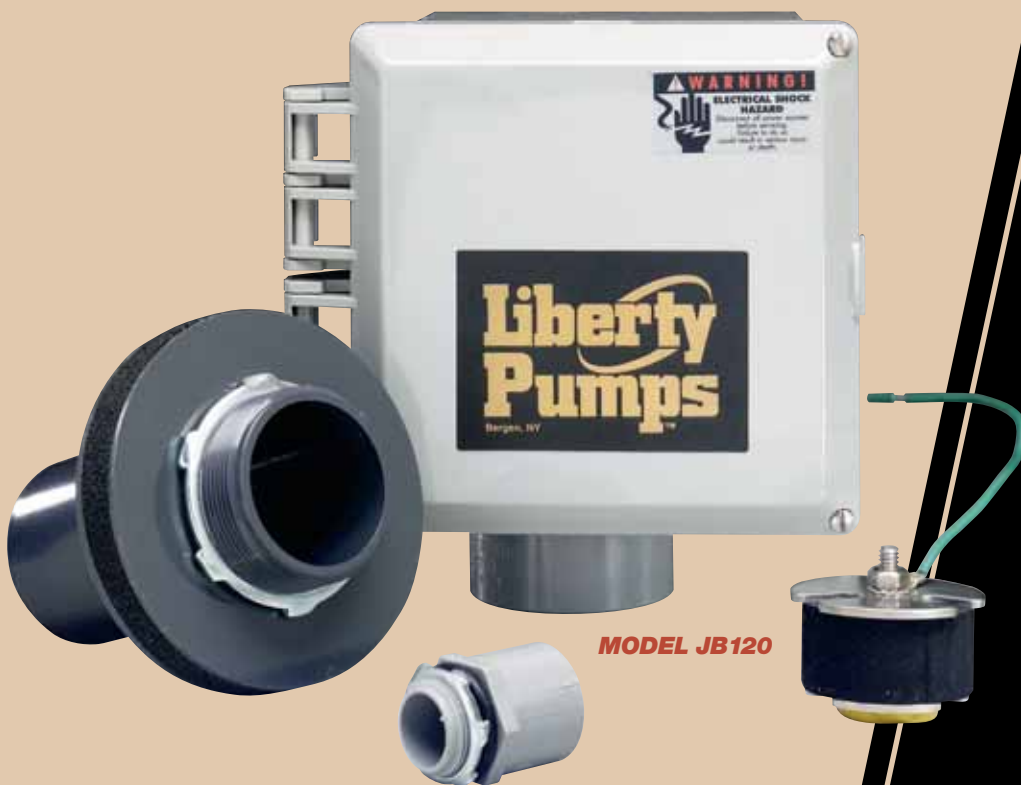


Liberty Pumps®

Model JB120 & JB230

**Pump Station
Junction Box
Provides Easy
Wiring Connection
for Pump Stations**



The JB120 and JB230 provide an easy and convenient way to connect all wiring necessary in a pump station application.

The JB-Series includes a receptacle (120V or 230V) that accepts a piggy-back plug from the pump. An easy-to-use terminal strip is also included for connection of an alarm system.

innovate. evolve.

JB120 and JB230

Pump Station Junction Box

All Models Feature:

- NEMA 4x enclosure with hinged door
- Separate alarm and pump control circuit
- Receptacle for pump and pump circuit (120V or 230V)
- Riser extension coupling and washers
- Custom engineered liquid-tight cable seal
- Electrical conduit hub
- Strain relief for pump and float cords provided by cord seal
- Terminal strip for use with alarm system
- Separate alarm and pump control circuitry provided by terminal strip
- Entire control system (panel and switches) is UL Listed to meet and/or exceed industry safety standards

- Dual safety certification for the United States and Canada

Specifications

Model	Voltage
JB120	120V
JB230	230V

Enclosure: 6 x 6 x 4 inch NEMA 4x weatherproof thermoplastic

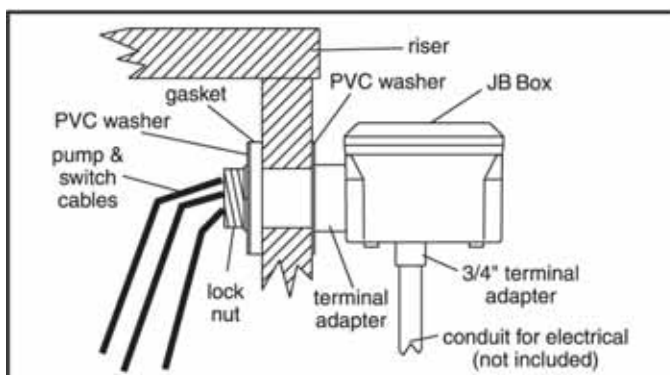
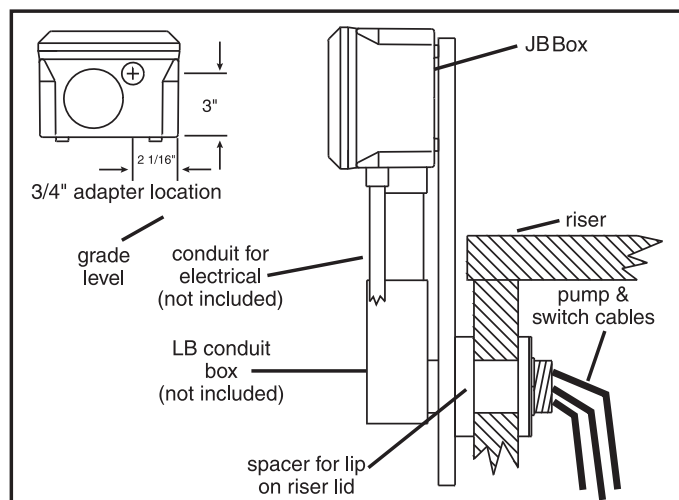
Receptacle:

JB120 – 120 VAC-NEMA type 5-15R

JB230 – 230 VAC-20 amp, NEMA type 6-20R

Cord Seal: Liquid-tight cord seal with strain relief

Typical Installations:



Specifications are subject to change without notice.