



4580 W Roosevelt Rd. Hillside, IL 60162

Phone: 312-733-1098 Fax: 708-234-1351

SPECIFICATIONS

MODEL PT-10W

GENERAL

Fine quality bathroom topmount sink formed of vitreous china

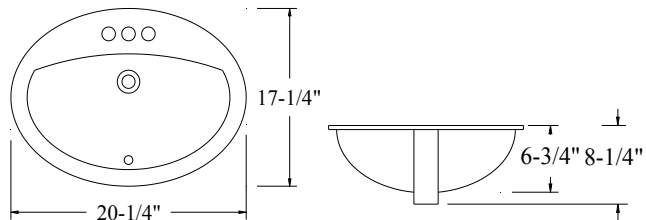
DESIGN FEATURES

Inside bowl depth 5-3/4" with over all size 20-1/4" X 17-1/4"

Color: White

Mount Style: Topmount

Other: Drain opening 1-3/4".



CUPC certified

Minimum cabinet size 24"

Product shall be specified as PT-10W

Warranty

Limited life time warranty against manufacturer defects.