

LENOVA

4580 W Roosevelt Rd Hillside, IL 60162 www.Lenovasinks.com Phone: 877-733-1098

Special Design Patent “PermaClean Drain System”

SPECIFICATIONS

MODEL PC-SAP-100

GENERAL

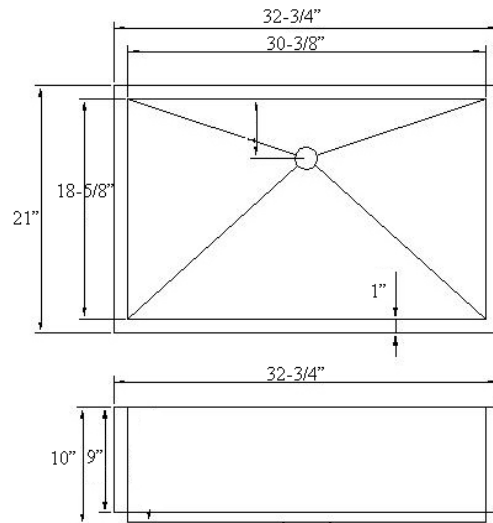
Fine quality sink formed of heavy duty 16 gauge, type 304 nickel bearing stainless steel.

DESIGN FEATURES

Bowl depth 10” with inside bowl dimensions 18-5/8” X30-3/8”, and over all 32-3/4” X 21”.

Finish: Inside bowl surfaces polished to a uniform satin finish.

Underside: High density sound absorption pads covered with a thick rubberized insulation layer on all bottom surfaces.



CUPC certified

Minimum cabinet size 33”

Product shall be specified as PC-SAP-100

ACCESSORIES:

1. The waste king adapter (for Waste King Garbage Disposal) is sold separately by request. List price for the waste king adapter is \$7.
2. The PermaClean Drain Kits (except waste king adapter), \$65 value, comes with the PermaClean Sink at no cost.



OPTIONAL ACCESSORIES:

Stainless Steel Grids: GPS100

Warranty:

Limited Life Time warranty against manufacturer defects and craftsmanship.