

# LENOVA

## SPECIFICATIONS

## MODEL PAC-02

### GENERAL

Fine quality rectangle porcelain vessel sink

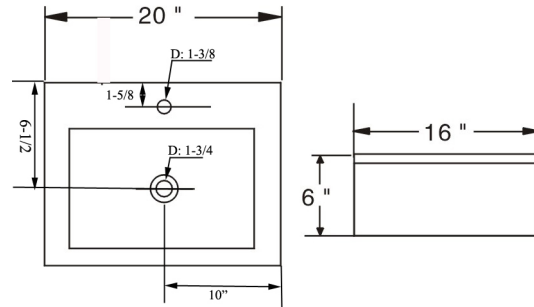
### DESIGN FEATURES

Bowl depth 6" with overall dimensions 20" X 16".

**Installation style:** Above counter

**Material:** Fine quality porcelain.

**Other:** Drain opening 1-3/4".



® UPC certified.

Product shall be specified as PAC-02

### OPTIONAL ACCESSORIES:



A-SP-05



A-SP-06



A-SP-04



A-SP-03

Mushroom Pop-Up Sink Drain:

A-SP-05 (Brushed Nickel), A-SP-06 (Polished Chrome), A-SP-04 (Oil Rubbed Bronze), A-SP-03 (Antique Bronze)



A-SP-21GN



A-SP-20GC



A-SP-22GB

19 Holes Grid Sink Drain:

A-SP-21GN (Brushed Nickel), A-SP-20GC (Polished Chrome), A-SP-22GB (Oil Rubbed Bronze)

### Warranty:

Limited life time warranty against manufacturer defects.

### Codes/Standards Applicable:

ASME A112.19.2 ASME A112.19.14/CSA B45.1

\*Template and mounting clips are packed with every sink