

SUBMITTAL SHEET

JOB NAME		ITEM TAG
JOB LOCATION		PART NUMBER
CONTRACTOR	DATE	
ENGINEER APPROVAL	DATE	

TEMPERATURE & PRESSURE GAUGE

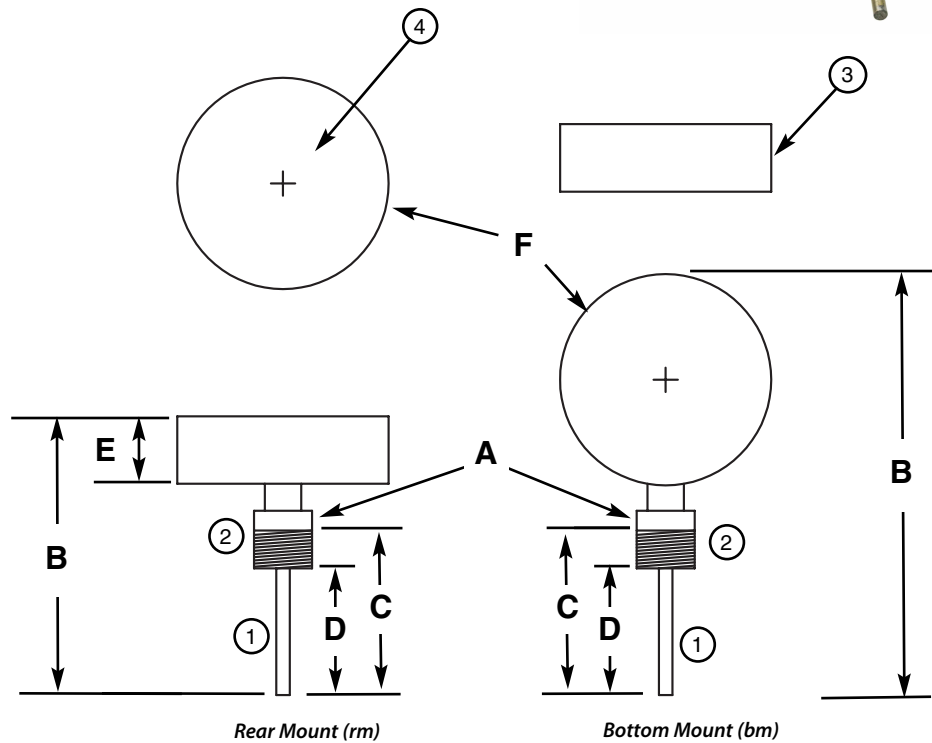
T-825



Bottom and Rear Mounting Configurations
Available in two temperature ranges
3" Gauge Face

Specifications:

- Configurations
 - Bottom Mount (bm)
 - Rear Mount (rm)
- Temperature ranges
 - 40-200° F (4-93° C)
 - or 60-280° F (15-138° C)
- Temperature accuracy
 - ± 3% of full scale
- Pressure range
 - 0-75 psi (0-174 feet H₂O)
- Pressure Accuracy
 - ± 3% of full scale



*Pictured
T-825*

MATERIAL SPECIFICATION

PART	MATERIAL	QTY
1. Temperature probe	Phosphor bronze	1
2. Threaded adapter	Brass	1
3. Gauge body	Steel, painted black	1
4. Lens	Plexiglass	1

DIMENSIONS (Inches)

Size (A)	Standard Probe				Extended Probe				E	F
	B (rm)	B (bm)	C	D	B (rm)	B (bm)	C	D		
1/2" NPT	3.25	5.1	1.5	1.0	4.42	6.5	2.5	2.1	1.25	3.13
1/4" NPT	3.25	5.1	1.5	1.0	4.42	6.5	2.5	2.1	1.25	3.13