

SUBMITTAL SHEET

JOB NAME	ITEM TAG
JOB LOCATION	PART NUMBER
CONTRACTOR	DATE
ENGINEER APPROVAL	DATE

LEAD-FREE PLAIN-END SAMPLING VALVE

T-532NL and T-532CPNL

Lead-free design is suitable for all no-lead potable water installations, in full compliance of the National lead-free plumbing law.

The plain spigot outlet is designed to permit water sampling purity, by removing the garden hose threads, which typically trap dirt and debris and contaminate the sample.

Available unplated (Model T-532NL) or with a smooth-chrome plated finish (Model T-532CPNL).

Available in nominal sizes 1/2" and 3/4" MNPT. The 1/2" MNPT inlet connections can also be sweat onto 1/2" copper tubing.

Working Pressure, Non-Shock (PSI)

Cold Working Pressure (CWP): 125 CWP

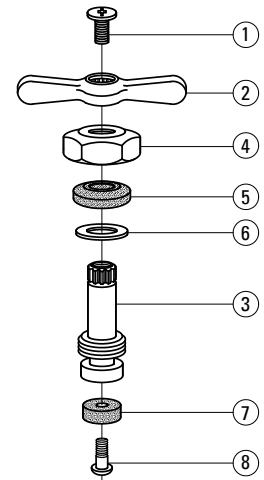
Saturated Steam (WSP): Not suitable for steam service.



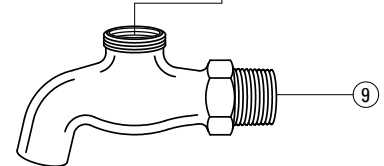
Pictured:
T-532NL



Pictured:
T-532CPNL



Pictured:
T-532NL
Exploded View



Pictured:
T-532NL
Cut-away view

MATERIAL SPECIFICATION

PART	MATERIAL	SPECIFICATION
1 Handle screw	Hot-rolled carbon steel	JIS G3507-1
2 T-handle	Zinc	Commercial grade, Z30A
3 Stem	Lead-free brass	UNS Alloy C46400
4 Bonnet nut	Forged brass	ASTM B124 UNS alloy C37700
5 Stem packing	NBR (Buna-N) rubber	Commercial grade
6 Packing support washer	Stainless steel	AISI Grade 304
7 Seat washer	NBR (Buna-N) rubber	Commercial grade
8 Seat screw	Lead-free brass	JIS H3260 UNS Alloy C26000
9 Body	Lead-free brass	UNS Alloy C46400

DIMENSIONS

Nominal Size	A	B (closed)	C
1/2" MNPT/swt x plain	3.36	2.57	2.20
3/4" MNPT x plain	3.39	2.57	2.20

- Third-party tested and certified in compliance with U.S. Federal Public Law 111-380 (National lead-free plumbing law).
- End connections comply with the following specifications:
 - ANSI/ASME B1.20.1 (male NPT inlet).
 - ANSI/ASME B16.18 (1/2" CTS solder inlet)
- Manufactured in an ISO accredited facility.

