

SUBMITTAL SHEET

JOB NAME	ITEM TAG
JOB LOCATION	PART NUMBER
CONTRACTOR	DATE
ENGINEER APPROVAL	DATE

PLASTIC PEX TUBING FITTINGS

Elbows, Tees, Plugs, Couplings and Adapters

These fittings are intended for use in cold- and hot-water distribution (potable) systems.

An ideal high-strength corrosion-free alternative to metallic fittings.

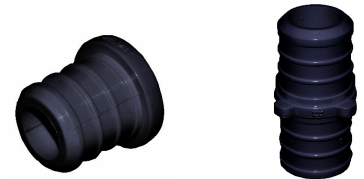
Barbed end connections are designed for insertion into PEX tubing that conforms to ASTM F 876 and F 877.

Designed for use with copper crimp rings (offered separately) that are manufactured in compliance with ASTM F 1807 and stainless steel clamp rings that are manufactured in compliance with ASTM F 2098.

Available in 1/2", 3/4" and 1" PEX tubing sizes, in seven configurations.

Working Pressure, Non-shock (PSI)
180°F @ 100 psi, max

- Third-party certified to NSF Standard 14 and Standard 61.
- Certified to ETL North American safety standards.



MATERIAL SPECIFICATION

PART	MATERIAL	SPECIFICATION
1	All plastic PEX fitting configurations	Modified Polyphenylsulfone ASTM D 6394

SPECIFICATIONS FOR PLASTIC PEX FITTINGS:

AMERICAN SOCIETY FOR TESTING AND MATERIALS (ASTM):

ASTM D 6394: Standard Specification for Sulfone Plastic Resin

ASTM F 2159: Standard Specification for Plastic Insert Fittings Utilizing a Copper Crimp Ring for SDR 9 Cross-linked Polyethylene (PEX) Tubing.

AMERICAN NATIONAL STANDARDS INSTITUTE (ANSI) AND AMERICAN SOCIETY OF MECHANICAL ENGINEERS (ASME):

ANSI/ASME B1.02.1: Pipe threads, general purpose, inch

CANADIAN STANDARDS ASSOCIATION (CSA):

CSA B137.5: Thermoplastic Pressure Piping Compendium