

**SUBMITTAL SHEET**

JOB NAME	ITEM TAG
JOB LOCATION	PART NUMBER
CONTRACTOR	DATE
ENGINEER APPROVAL	DATE



**LEAD-FREE LEGENDPRESS® INSERT STIFFENER**

**Bronze Insert Stiffener**

For use with Legend’s Extended 90° Street Elbow (450-034P) to reinforce finned tubes. Standard finned tubing does not meet the minimum wall thickness requirements for press connections. The insert stiffener is a bronze sleeve, that is inserted into a finned tube pipe.

The stiffener must be fully inserted to the stop for a proper connection.

The extended street elbow should not be pressed if the insert stiffener is not fully inserted.

**Working Pressure, Non Shock (PSI)**

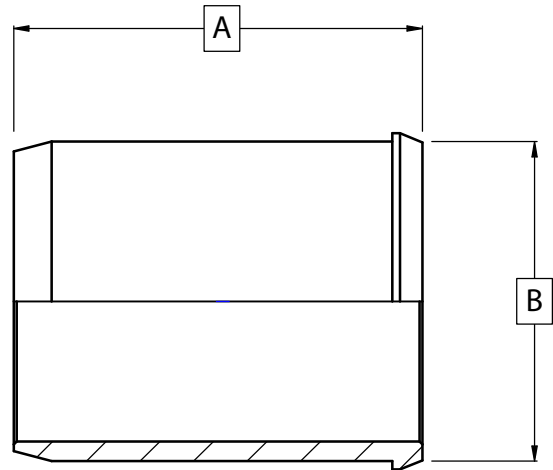
Cold working pressure (CWP): 200 psi  
Saturated steam (WSP): 15 psi  
Operating temperature range: 0-250° F

**Pictured:**  
LegendPress Bronze  
Insert Stiffener



MATERIAL SPECIFICATION		
PART	MATERIAL	SPECIFICATION
1 Insert Stiffener	No Lead Bronze	UNS Alloy C87850

DIMENSIONS		
Size	A	B
	1.06"	0.87"



**Pictured:**  
LegendPress Bronze Insert Stiffener  
Cut-away