

## Piazza Lavatory Item #4282

### Features:

- Porcelain lavatory with overflow
- Wall-mount, vanity top, or self-rimming installation
- Wall-mounting bolts are included
- Faucet hole diameter is 1 3/8"
- European-size drain recommended (i.e. item #7100-16OF or 7100-12)
- Most standard American drains can also be used
- Unfinished back wall
- Meets and exceeds the following standards/codes:
  - ASME A112.19.2-2013/CSA B45.1-13
  - CMR 248 (Mass. Code of Approval)
- Freight class 2 based on the Lacava Freight Program



### Recommended Accessories:

- Item #4207: Wall-mount porcelain shroud
- Item #4231: Free-standing porcelain pedestal
- Item #AL029B: Wall-mount under-counter vanity with an aluminum pull on a drawer

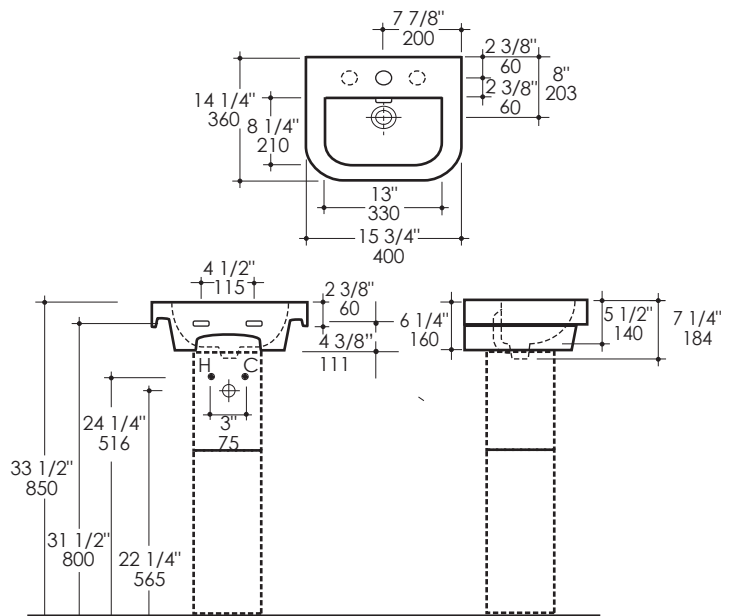
### Finish Options:

001 - White

### Faucet Hole Options:

- 01 - One
- 02 - Two - center and right
- 03 - Three in 8" spread

### Product Specifications:



#### Notes:

Drawings provided herein are meant to give the user an idea of the product and are not made to scale. The size in inches is rounded up to the nearest 1/16". Slight variances can often occur with porcelain and woodwork. Therefore, LACAVA will not be held responsible for any cutouts, countertops, or furniture made without the actual product or template from LACAVA.

Plumbing specifications are only a guideline and may need to be altered based on the application.

Product specifications are not binding to the manufacturer and can be changed without notice at any time. Please refer to your shipment for product final sizes.

LACAVA is committed to the highest level of customer service. Please feel free to contact us at 1-888-522-2823 (toll free) or by email at [info@lacava.com](mailto:info@lacava.com) for technical assistance or any general inquiries.

Rev. 02-03-2017