



Lyric® Workstation

Top-mount/undermount single-bowl kitchen sink
K-RH23375-4PC

Features

- Accessories stack and slide to enhance food prep and cleanup.
- 30" minimum base cabinet width.
- Single bowl.
- 9" depth provides generous workspace.
- Three faucet holes with one accessory hole to the right.
- Tightly angled fabricated corners maximize basin space.
- Colander set is dishwasher safe.
- Strainer not included.
- Accessories slide on sink ledges when sink is top-mounted.
- Includes two-piece colander set and large acacia wood cutting board.



Material

- Premium 18-gauge stainless steel.

Technology

- SilentShield® sound-absorption technology offers quieter performance.

Installation

- Top-mount or undermount.
- Cutting board slides across the countertop when sink is undermounted.

Recommended Products/Accessories

K-23380 sink rack for K-RH23375-4PC
K-8801 Sink Strainer
K-8799 Sink Strainer
K-23726 Drain treatment
K-23729 Stainless steel cleaner

Optional Products/Accessories

K-9000 P-Trap

Included Components

Additional Components:

K-21614 colander set for kitchen sink
K-23379 cutting board

Codes/Standards

ASME A112.19.3/CSA B45.4

Lifetime Limited Warranty for KOHLER® Stainless Steel Sinks

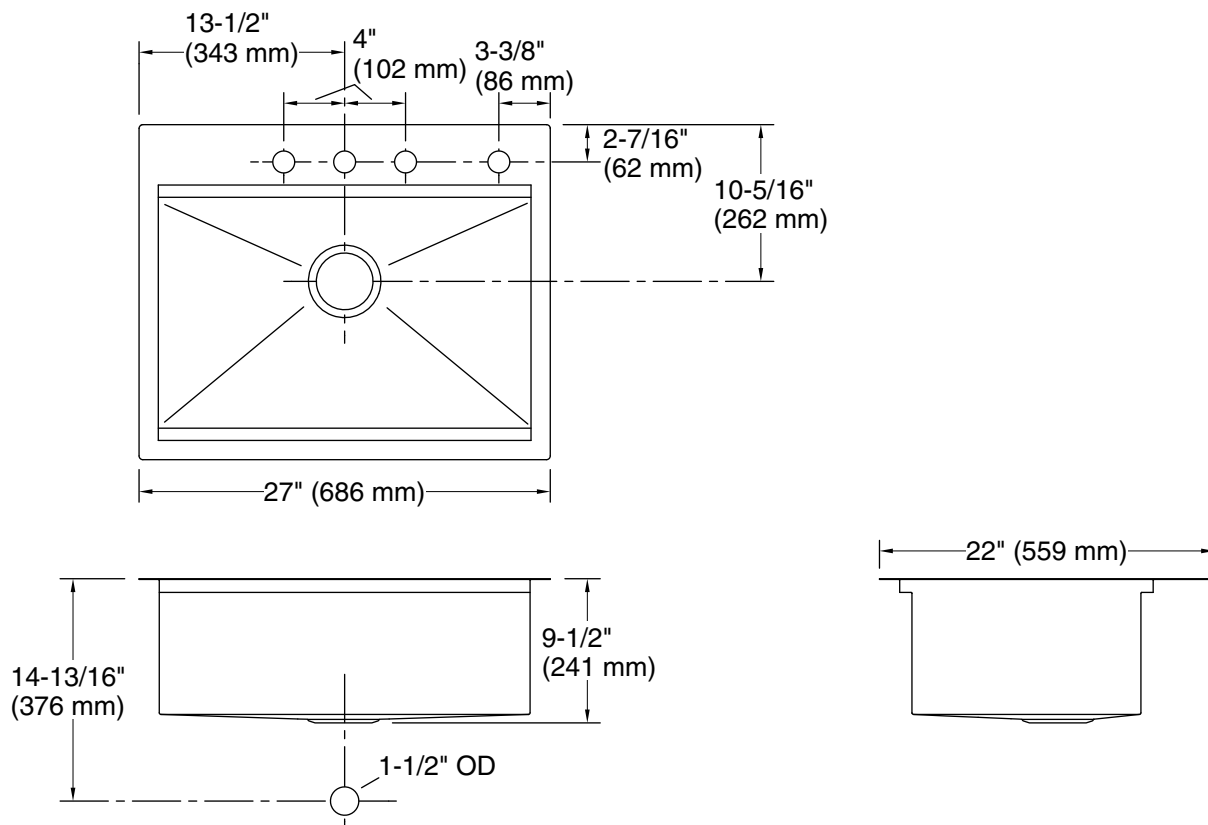
See website for detailed warranty information.



Lyric® Workstation

Top-mount/undermount single-bowl kitchen sink

K-RH23375-4PC



Technical Information

All product dimensions are nominal.

Bowl configuration: Single

Installation: Top-mount, Undermount

Min. base cabinet width: 30" (762 mm)

Bowl area (Only): Length: 24-1/4" (616 mm)
Width: 14-15/16" (379 mm)
Bowl depth: 9-3/16" (233 mm)
Water depth: 9-3/16" (233 mm)

Number of deck holes: 4

Faucet hole spacing: 8" (203 mm)

Faucet hole(s): 1-7/16" (37 mm)

Soap/Lotion hole: 1-7/16" (37 mm)

Drain hole: 3-3/4" (94 mm)

Template: 1381844-7, required, included

Notes

Install this product according to the installation instructions.

NOTICE: Countertop manufacturer or cutter must use the cut-out template provided with the product, or a current one provided by Kohler Co. (call 1-800-4-KOHLER). Kohler Co. is not responsible for cutout errors when the incorrect cut-out template is used.