

Features

- Set includes: Cabinet, precut Silestone® quartz vanity top, sinks, cabinet hardware, mounting hardware for sinks
- Vanity top has single faucet hole with pilot holes for optional 8" (203 mm) widespread faucet configuration at each sink location
- Three-way adjustable slow-close door hinges for easy cabinet access
- Full-extension 18" (457 mm) depth drawer with soft-close undermount slides for smooth opening
- Solid wood drawer with dovetail joint construction
- Vanity top is covered under the Silestone® 25-Year Limited Warranty
- Silestone® quartz provides exceptional durability and stain resistance, making it easy to maintain
- Caxton® Rectangle undermount sink has a streamlined design that is easy to clean
- Customize your storage with optional in-door and in-drawer accessories and medicine cabinet surrounds and side kits (sold separately)
- Optional vanity top side and backsplashes available (sold separately)

Material

- Solid and composite wood
- Silestone® quartz vanity top
- Vitreous china sinks
- Premium metal hardware for durability and reliability

Installation

- Wall-mount

Required Products/Accessories

- K-27933 Drawer appliance organizer
- K-28265 Silestone® quartz 61" backsplash
- K-33586 Drawer organizer with lid
- K-33587 Divided drawer organizer
- K-33588 Makeup display tray and organizer
- K-5448 Bathroom Vanity Top - Back splash
- K-5451 Bathroom Vanity Top - Side Splash
- K-99565 Metal Vanity Legs
- K-99677-SH6 Adjustable shelf for 60" KOHLER Tailored® vanities
- K-99678-SH6 Shelf w/outlets for 60" KOHLER Tailored® vanities
- K-99679-SH6 Roll-out drawer for 60" KOHLER Tailored® vanities
- K-99681 Electrical outlets for KOHLER Tailored® vanities
- K-99682 General storage package for KOHLER Tailored®

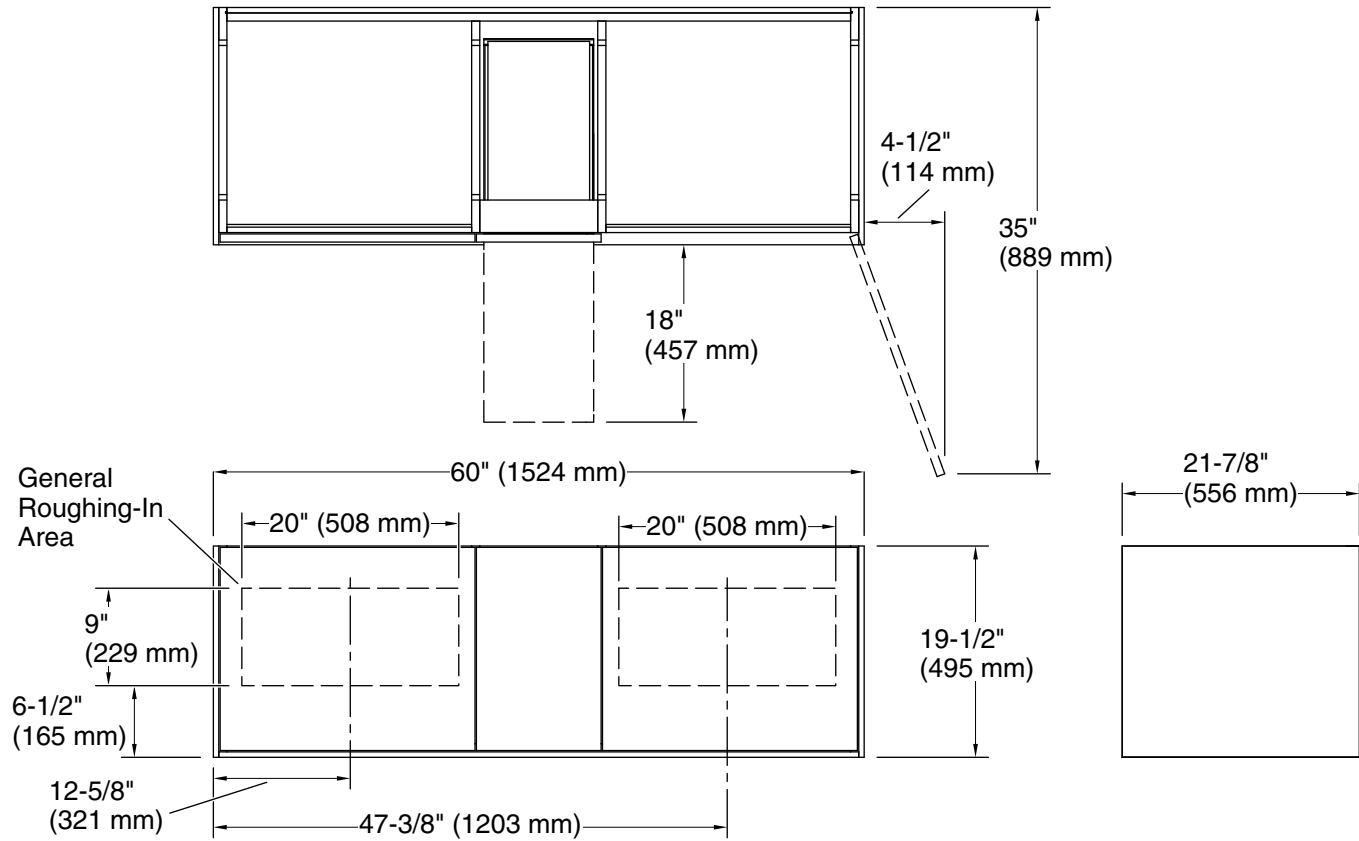


Codes/Standards

EPA TSCA Title VI/CARB P2

KOHLER® One-Year Limited Warranty

See website for detailed warranty information.



Technical Information

All product dimensions are nominal.