

## Features

- Catalyzed conversion varnish provides a durable moisture-resistant finish.
- Four doors and two drawers.
- Split top drawer feature adds a hidden, shallow drawer for additional storage without compromising the look of the cabinet face.
- Three-way adjustable slow-close door hinges with 110-degree opening capability for easy cabinet access.
- Full-extension 18-inch depth drawers with slow-close under-mount slides for smooth opening.
- Solid wood drawers with dovetail construction.
- Coordinates with the K-99687 Poplin/Marabou rectangular pull (sold separately).
- Combines with Solid/Expressions™ vanity tops (sold separately) for a complete vanity.
- Customize your storage with optional in-door accessories, in-drawer accessories, and medicine cabinet surrounds and side kits (sold separately).

## Material

- Solid wood and veneers.
- Wood is a living material, and its beauty is enhanced by natural variations in grain, color, and pattern. No two pieces of wood are exactly the same, and the color will change with age, temperature, and exposure to light.
- The nature of wood grain can cause variations in stain depth. Our expert craftspeople hand-apply the stain to blend these variations.

## Recommended Products/Accessories

K-5461 Bathroom Vanity Top  
K-99686 Knob  
K-99689 Handle  
K-5433 Bathroom Vanity Top  
K-5441 Bathroom Vanity Top  
K-2789-1 Vitreous Top and Basin Bathroom Sink  
K-2898-1 Vitreous Top and Basin Bathroom Sink  
K-2898-8 Vitreous Top and Basin Bathroom Sink

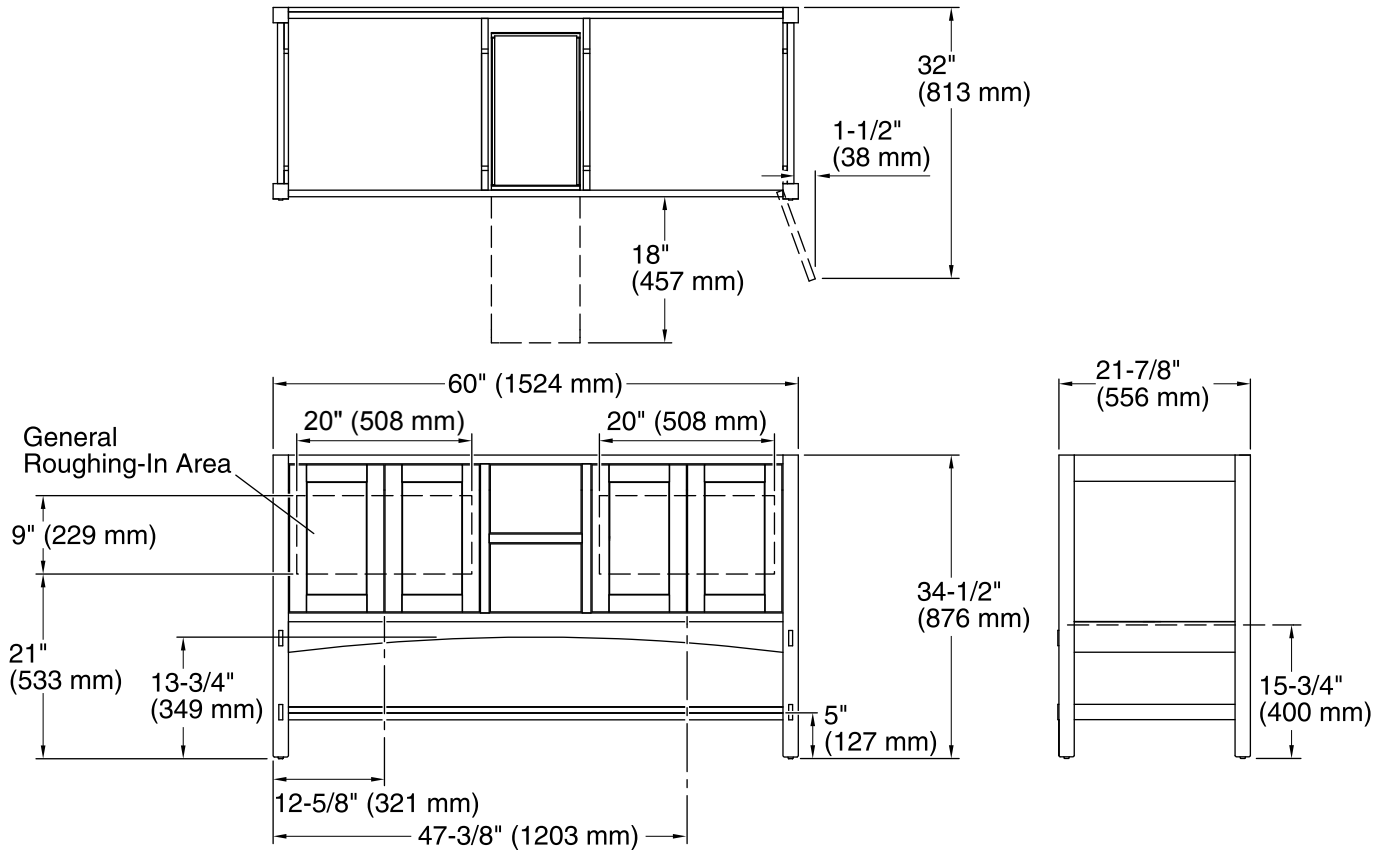


## Codes/Standards

EPA TSCA Title VI  
CARB P2

## KOHLER® One-Year Limited Warranty

See website for detailed warranty information.



## Technical Information

All product dimensions are nominal.

Vanity type: Standard

## Notes

Install this product according to the installation guide.

Decorative cabinet hardware is not supplied. Refer to the KOHLER bath accessories line for recommended cabinet hardware to complement your vanity.

Select the type of fastener based upon the wall material. Two 250 lb (113.4 kg) minimum load bearing fasteners are recommended.