

## Features

- Fixture-mount design
- Retrofit models require a control stop and vacuum breaker

## Material

- Brass

## Technology

- Nonhold open piston technology for accurate activation

## Installation

- Intended for urinal installations with 3/4" (19 mm) spud coupling connection



ADA

CSA B651

OBC

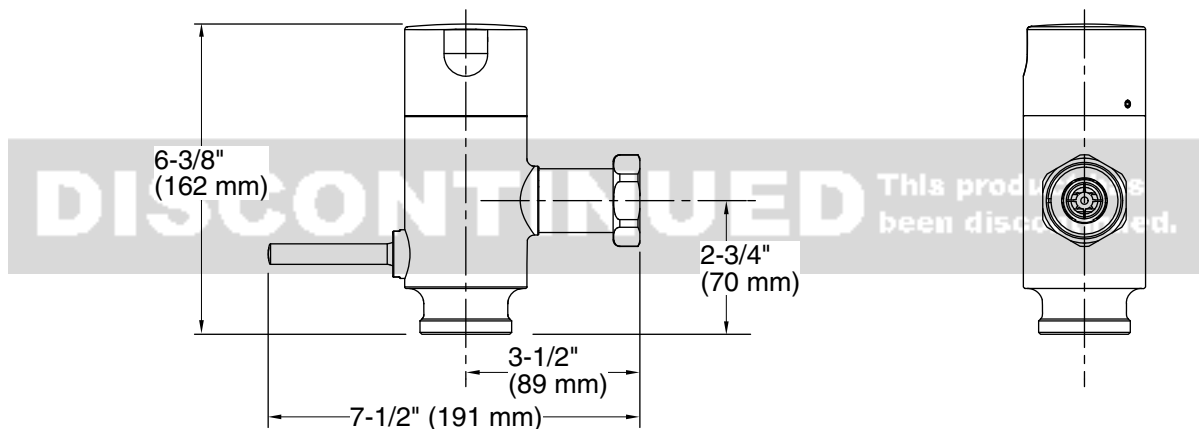
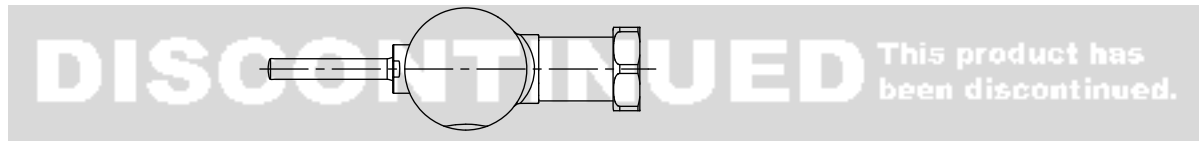
## Codes/Standards

ASME A112.18.1/CSA B125.1  
CSA B125.3  
CSA B64  
ASSE 1037/ASME A112.1037/CSA B125.37  
ADA  
ICC/ANSI A117.1  
CSA B651  
OBC

## KOHLER® One-Year Limited Warranty

See website for detailed warranty information.

**DISCONTINUED** This product has been discontinued.



### Technical Information

All product dimensions are nominal.

### Pressure/fixture Supply Requirements

Fixture pressure max (static):	80 psi (551.6 kPa)
Min flowing pressure:	25 psi (172.4 kPa)
Min flow rate:	10 gpm (37.9 lpm)

### Notes

Install this product according to the installation guide.

ADA, OBC, CSA B651 compliant when installed to the specific requirements of these regulations.