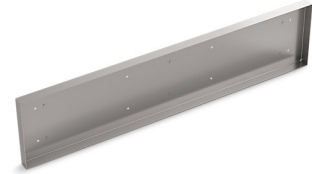


Features

- For use with the K-22569 or K-22570 Tailor™ farmhouse sink.
- Designed to accommodate traditional wall tiles and backing up to 1.18" (3cm) thick.
- Attaches to the Tailor™ carrier bracket system.
- Stainless steel construction.
- Easy to remove and replace with other inserts.

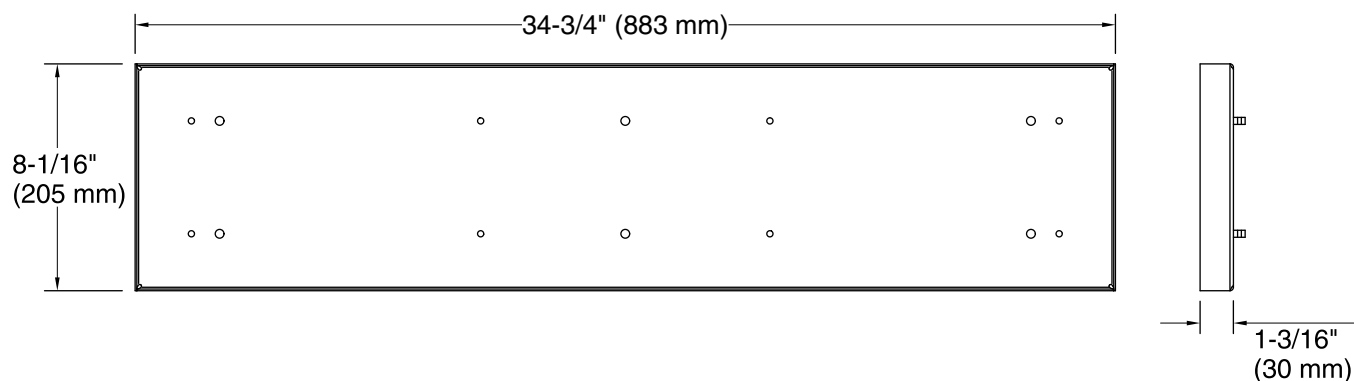


Codes/Standards

None Applicable

KOHLER® One-Year Limited Warranty

See website for detailed warranty information.



Technical Information

All product dimensions are nominal.

Notes

Install this product according to the installation instructions.